



Supporting your installations since 1978

# TRADE SPECIALS

JAN 2022 RELEASE

CCTV ▪ ALARMS ▪ INTERCOMS ▪ ACCESS ▪ LIGHTING ▪ SOLAR ▪ POWER

## SUPPORTING YOU NOW

Access hundreds of products from the best brands to earn you more in your next installation



### Supporting & inspiring your installations:

- Industry leading **4 year warranty** on professional range
- Unique & protected **brands to add value** to your installs
- We **match pricing** for directly comparable products
- Local & free **expert technical support** on our range

Not already a trade member?

**Sign Up Today!**

[rhinoco.com.au](http://rhinoco.com.au)



**We're dedicated to winning you more business.**

**RhinoCo Technology** is your premier **security wholesale & distribution** company, specialising in CCTV, security, alarm & lighting systems.

We have branches located all across Sydney for local pickups, and with fast Australia-wide shipping, RhinoCo always has you covered.

We are dedicated to your business' success and, by becoming a RhinoCo Technology customer, we promise to share our **over 40 years experience** to help you achieve that success.



### **RhinoCo Showroom Locations:**

**McGraths Hill Head Office & Distribution**  
9 Hannabus Place McGraths Hill, NSW 2756

**Haberfield Showroom & Sales Office**  
223-225 Ramsay Street Haberfield, NSW 2045

**Guildford Showroom & Sales Office**  
577 Woodville Road Guildford, NSW 2161



# Ready to supply you for any job.

At RhinoCo, we do whatever it takes to help trade professionals create incredible installations. We only select high quality brands and thoroughly test each product to ensure they meet the standards you and your customers demand.

## Our promise to you:

### The best brands & the best warranty.

We offer a broad range of solutions from market-leading brands with an industry-leading 4 year warranty for all professional surveillance cameras & recorders.



### Solutions for every security challenge.

Our product range & expertise extends to CCTV surveillance, alarm systems & building security, vehicle safety & security, intercoms, access control, LED lighting, electrical, solar and battery storage systems.



### Systems designed & built with expertise.

We strive to innovate the Australian security industry by offering custom security solutions, designed and built in-house by our expert technical team.

*Pictured: VIP Vision / ENSA SLR-B Series Solar CCTV System*

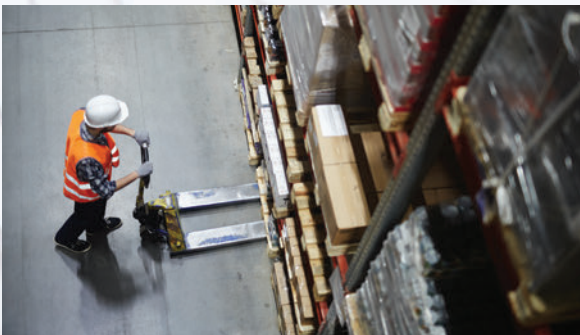


# We have you covered with our national distribution centre.



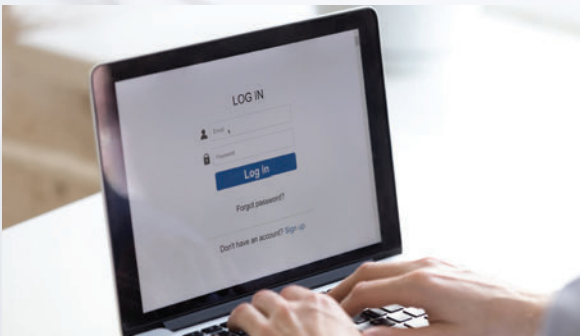
Our New South Wales warehouse, with over 4,000m<sup>2</sup> of space for stock.

**We're ready to supply you with whatever you need!** With our huge national distribution centre filled with stock and same day shipping Australia-wide, you always get what you need for your job with RhinoCo.



## Same Day Shipping

We ship nationally within one day from our distribution centre, with same day delivery for the Sydney Metro area.\*



## Same Day Trade Approval

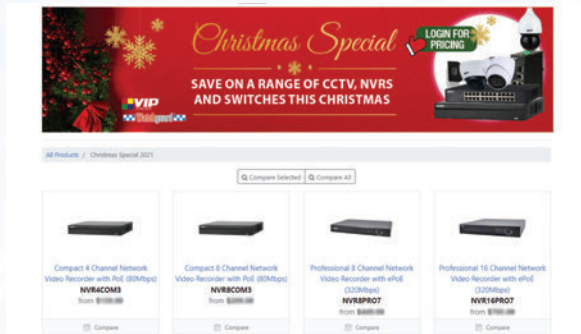
Sign up with your ABN and license(s) and we'll set you up with a trade account and sales representative.\*

*\*Conditions apply.*



# Create your RhinoCo Trade Account today!

Sign up to the **RhinoCo Customer Portal** for free access to special pricing, tools & resources to help you win your next installation job:



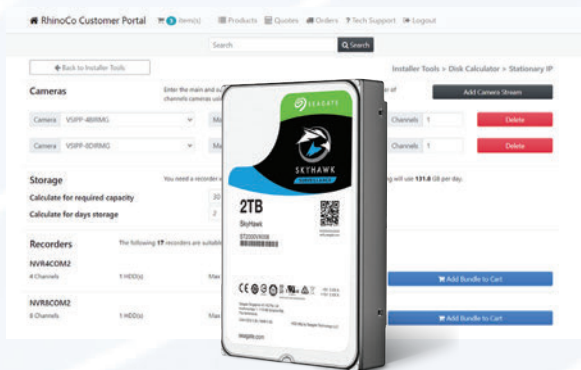
## Exclusive Trade Deals

Gain access to trade customer pricing and exclusive special offers, with new products and offers added regularly.



## Custom Marketing Material

Generate custom product brochures & business cards on our Portal, featuring your own business logo and details.



## Online Installer Tools

Calculate CCTV system storage space with the Disk Calculator, and access our helpful online support database.

Signing up is fast & easy - join today!

**rhinoco.com.au**

# NEW YEAR'S SPECIALS

## NETWORK CAMERAS

**\$40 OFF**



### Compact Series 4.0MP Motorised Dome

4.0MP@20fps, 2.8~12mm (94°~33°), 30m IR, motion detection, IP67

VSIPC-4DIRMD (4.0MP VF Dome) **\$105** WAS \$145



### Pro Series 2.0MP Fixed Lens Bullet

2.0MP@20fps, 3.6mm (87°), 60m IR, WDR, tripwire/intrusion, IP67/IK10

VSIP2MPFBMINIIR (2.0MP Fixed Turret) **\$65** WAS \$125

Full HD  
1080

**\$60 OFF**

**40% OFF**



### Pinhole Series 2.0MP WDR Pinhole Camera

2.0MP@25fps, 2.8mm (105°), WDR, 0.005lx, tripwire/intrusion, IVS, audio I/O, compact housing

VSIPPH-2S (2.0MP Pinhole) **\$145** WAS \$236



Full HD  
1080

**\$45 OFF**



### Pro Series 2.0MP 12x Zoom PTZ Dome

2.0MP@25fps, 12x optical zoom (58~5°), WDR, endless 360° panning, 0.005lx, touring, IVS

VSIP2MPPTZV3 (2.0MP PTZ) **\$325** WAS \$370



Full HD  
1080

**20% OFF**



### Pro Series 2.0MP 25x Zoom Recessed PTZ Dome

2.0MP@50fps, 25x optical zoom (59.2~2.4°), WDR, endless 360° panning, 0.005lx, PTZ touring, IVS, IK10

VSIP2MPPTZCV3 (2.0MP PTZ) **\$425** WAS \$529



Full HD  
1080

**25% OFF**



### Ultimate Series 2.0MP Motorised Bullet

2.0MP@50fps, 4.1~16.4mm (104~33°), 50m IR, 0.002lx, tripwire/intrusion, IVS, audio/alarm, IK10, BNC video out

VSIP2MPFBIRLV3 (2.0MP Ult. Bullet) **\$555** WAS \$769



Full HD  
1080



# Save big & earn more on your next install with **HUGE DEALS** on select products

## AI NETWORK CAMERAS

**15% OFF**



### Pro AI Series 4.0MP Fixed Lens Cameras

4.0MP@25fps, 2.8mm (103°) 50m IR, colour@0.005lx, AI people & vehicle detection

VSIPP-4BIRG-I (4.0MP Bullet)  
VSIPP-4DIRD-I (4.0MP Dome)

**\$125** WAS \$148



**SAVE \$25**

**4.0**  
MEGAPIXEL



### Pro AI Series 4.0MP Fixed Lens Wedge Dome

4.0MP@25fps, 2.8mm (103°) 50m IR, colour@0.005lx, AI people & vehicle detection

VSIPP-4DIRF-I  
(4.0MP Wedge Dome)

**\$110** WAS \$135



**SAVE \$30**

**Full HD**  
1080



### Pro AI Series 2.0MP Deterrence Turret

Siren, spotlight & flashing light for alarms, AI people & vehicle detection, 2.0MP@25fps, 2.8mm (107°), 24/7 Colour

VSIPP-2DG-ID  
(2.0MP Turret)

**\$145** WAS \$175



**SAVE \$45**



### Ultimate AI Series 4.0MP Motorised Varifocal Cameras

People counting / flow control, Face Capture for AI NVRs\*, AI people & vehicle detection, 4.0MP@25fps, 2.7~12mm (114°~47°), auto iris, 0.003lx, WDR, audio & alarm, IP67

\* Pro AI Series NVR required for face recognition functions

VSIPU-4BIRM-I (4.0MP Bullet)  
VSIPU-4DIRM-I (4.0MP Dome)  
VSIPU-4DIRMG-I (4.0MP Turret)

**\$380** WAS \$425



**4K**  
ULTRA HD

# NEW YEAR'S SPECIALS

## HDCVI CAMERAS

**SAVE \$20**

**SECURVIEW**  
VICTORY SERIES

### Pro Series 2.0MP / 5.0MP Motorised HDCVI Cameras

2.0MP@25fps / 5.0MP@20fps, motorised VF lens (109°~29°), HDCVI/AHD/SD, 12VDC/24VAC, up to 80m IR (bullet), Starlight, audio I/O



VSCVI2MPFBIRMV4 **\$115** WAS **\$135**  
(2.0MP, Bullet)

VSCVI2MPVDJRMV4 **\$115** WAS **\$135**  
(2.0MP, Dome)

VSCVI-5BIRMG **\$125** WAS **\$145**  
(5.0MP, Bullet)

VSCVI-5DIRMD **\$125** WAS **\$145**  
(5.0MP, Dome)

**25% OFF**

**SECURVIEW**  
VICTORY SERIES

### Pro Series 8.0MP HDCVI Cameras

8.0MP@15fps, colour@0.005lx, 2.8mm (111°) / 3.7~11mm (112~46°), WDR, HDCVI/AHD/TVI/SD switchable, 12VDC



VSCVI-8BIRG **\$78** WAS **\$105**  
(8.0MP Bullet)

VSCVI-8BIRP **\$86** WAS **\$115**  
(8.0MP PIR Bullet)

VSCVI-8DIRMG **\$135** WAS **\$185**  
(8.0MP VF Turret)

**20% OFF**

**SECURVIEW**  
VICTORY SERIES

### Professional Series 4.0MP 30x Zoom HDCVI PTZ

4.0MP@25fps, 4.5~135mm (60°~2.2°; 30x optical zoom), auto iris, smart IR @ 100m, audio & alarm, endless 360° panning, true WDR, HDCVI/SD



VSCVI4MPPTZIRB **\$685** WAS **\$859**  
(4.0MP PTZ)

**SAVE \$100**

**SECURVIEW**  
VICTORY SERIES

### Ultimate Series 8.0MP HDCVI Motorised Cameras

2.0MP@25fps, 2.7~12mm (95°~36°), auto iris, 0.005lx, 50m/100m IR, WDR, audio/alarm, HDCVI/SD, 12VDC/24VAC



VSCVI8MPFBIRM **\$249** WAS **\$349**  
(8.0MP Bullet)

VSCVI8MPVDIRM **\$249** WAS **\$349**  
(8.0MP Bullet)



# Save big & earn more on your next install with **HUGE DEALS** on select products

## INTERCOM & NETWORKING

**SAVE \$30**



### Residential IP PoE Indoor Monitor

7" TFT touchscreen (1024 x 600), wall / desktop mount, PoE / 12VDC, record & snapshot, microSD card storage

INTIPMONGB (Black) **\$115** WAS \$145

**SAVE \$80**



### Residential IP PoE Large Indoor Monitor

10" TFT touchscreen (1024 x 600), Wall mount, PoE / 12VDC, Record & snapshot, SD card storage

INTIPMONGBL (Black) **\$235** WAS \$315

**SAVE \$75**



### Apartment IP Monitor

7" TFT capacitive touchscreen (800 x 480 pixels)

INTIPMONPOE: PoE switch for multi-monitor premises for monitor PoE power; connect up to 6 monitors

INTIPMON (White) **\$124** WAS \$199  
INTIPMONPOE **\$29** WAS \$69

**10% OFF**



### Fast Hi-PoE Switches

4 port & 8 port desktop PoE switches, 1000M uplink port & SFP uplink ports, 30W per port & 1 x HiPoE port 60W

VSPOE-SW4H (4 Port, 60W) **\$70** WAS \$78  
VSPOE-SW8H (8 Port, 96W) **\$106** WAS \$119



### Gigabit Ethernet Switches

1000Mbps Base-T Gigabit ethernet ports, unmanaged plug & play, full metal housing, no PoE

VSETH-SW16G (16 port, 32Gbps) **\$95** WAS \$102  
VSETH-SW24G (24 port, 48Gbps) **\$125** WAS \$135



# Professional Camera Systems for Home and Business



## IP camera kits that grow with your job size

Choose from any Compact Series camera in your 4MP or 8MP kit



**4.0**  
MEGAPIXEL

### 4.0MP IP Camera Kits

#### 4 Channel NVR + 4 Cameras

- 1 x 4Ch NVR, 4 x PoE, 1 x HDD bay (NVR4COM3)
- 1 x Pre-installed 1TB Surveillance HDD (HD1TBSV)
- 4 x 4.0MP 2.8mm (102°) cameras (VSIPC-4DIRG2)

#### 8 Channel NVR + 6 Cameras

- 1 x 8Ch NVR, 8 x PoE, 1 x HDD bay (NVR8COM3)
- 1 x Pre-installed 2TB Surveillance HDD (HD2TBSV)
- 6 x 4.0MP 2.8mm (102°) cameras (VSIPC-4DIRG2)

#### 16 Channel NVR + 10 Cameras

- 1 x 16Ch NVR, 16 x PoE, 2 x HDD bays (NVR16COM3)
- 1 x Pre-installed 4TB Surveillance HDD (HD4TBSV)
- 10 x 4.0MP 2.8mm (102°) cameras (VSIPC-4DIRG2)

NVRKIT-C441F  
(4CH, 4CAM, 1TB)

**\$575**

NVRKIT-C842F-6C  
(8CH, 6CAM, 2TB)

**\$854**

NVRKIT-C1644F-10C  
(16CH, 10CAM, 4TB)

**\$1427**

**4K**  
ULTRA HD

### 8.0MP IP Camera Kits

#### 4 Channel NVR + 4 Cameras

- 1 x 4Ch NVR, 4 x PoE, 1 x HDD bay (NVR4COM3)
- 1 x Pre-installed 2TB Surveillance HDD (HD2TBSV)
- 4 x 8.0MP 2.8mm (105°) cameras (VSIPC-8DIRG2)

#### 8 Channel NVR + 6 Cameras

- 1 x 8Ch NVR, 8 x PoE, 1 x HDD bay (NVR8COM3)
- 1 x Pre-installed 4TB Surveillance HDD (HD4TBSV)
- 6 x 8.0MP 2.8mm (105°) cameras (VSIPC-8DIRG2)

#### 16 Channel NVR + 10 Cameras

- 1 x 16Ch NVR, 16 x PoE, 2 x HDD bays (NVR16COM3)
- 1 x Pre-installed 8TB Surveillance HDD (HD4TBSV)
- 10 x 8.0MP 2.8mm (105°) cameras (VSIPC-8DIRG2)

NVRKIT-C482F  
(4CH, 4CAM, 2TB)

**\$845**

NVRKIT-C884F-6C  
(8CH, 6CAM, 4TB)

**\$1261**

NVRKIT-C1688F-10C  
(16CH, 10CAM, 8TB)

**\$2178**



# High value installs with Watchguard Compact Series



## Compact Series Network Video Recorders

- Available in 4, 8 and 16 channel systems with built in PoE
- Support for up to 8.0MP / 4K camera resolution
- 1/2 x HDD bays with HDMI and VGA display outputs
- Quick configure phone/tablet remote view via QR code

NVR4COM3  
(4CH, 1 x HDD)

**\$159**

NVR8COM3  
(8CH, 1 x HDD)

**\$209**

NVR16COM3  
(16CH, 2 x HDD)

**\$349**



## Compact Series Bullet

- 4.0MP@20fps, 8.0MP@15fps
- 30m infrared, 2.8mm lens (102°)
- Starlight, WDR, IP67 metal chassis
- Tripwire/intrusion video analytics

VSIPC-4BIRS2  
(4MP, 102°)

**\$92**

VSIPC-8BIRS  
(8MP, 105°)

**\$149**



## Compact Series Dome

- 4.0MP@20fps, 8.0MP@15fps
- 30m infrared, 2.8mm lens (102°)
- Starlight, WDR, IP67 & IK10 chassis
- Tripwire/intrusion video analytics

VSIPC-4DIRD2  
(4MP, 102°)

**\$92**

VSIPC-8DIRD  
(8MP, 105°)

**\$149**



## Compact Series Turret

- 4.0MP@20fps, 8.0MP@15fps
- 30m infrared, 2.8mm lens (102°)
- Starlight, WDR, IP67 metal chassis
- Tripwire/intrusion video analytics

VSIPC-4DIRG2  
(4MP, 102°)

**\$92**

VSIPC-8DIRG2  
(8MP, 105°)

**\$149**



VSBKTA134  
(Junction Box)

**\$10<sup>50</sup>**



VSBKTA152E  
(Pole Mount)

**\$15**



VSBKTA136  
(Junction Box)

**\$10<sup>50</sup>**



VSBKTB203W  
(Right Angle)

**\$12**



VSBKTA139  
(Junction Box)

**\$10<sup>50</sup>**



VSBKTB204W  
(Right Angle)

**\$12**



Professional IP Solutions

# High Performance with the Latest Key Technologies



## Cater from small residential jobs to enterprise

Recorders from 4 channel to 32 channel & cameras from 1080p to 4K



### Professional Series 4 - 32 Channel NVRs

- Records up to 12.0MP resolution (4000 x 3000)
- Support for high resolution and AI IP cameras
- Power over Ethernet systems; 4/8/16/24 PoE ports
- Up to 4 x HDD ports, max. 40TB HDD capacity
- Motion detection recording & record scheduling
- Easy phone setup via QR code; live view & playback



**4K**  
ULTRA HD



NVR4PRO4  
(4CH, 2 HDD)

**\$239**

NVR8PRO7  
(8CH, 2 HDD)

**\$449**

NVR16PRO7  
(16CH, 4 HDD)

**\$705**

NVR24PRO6  
(24CH, 4 HDD)

**\$769**

NVR32PRO16P3  
(32CH, 16 PoE, 4 HDD)

**\$795**



### Pro Series Motorised Lens IP Cameras

Available in bullet, vandal dome and turret models  
4.0MP@20fps, 8.0MP@15fps, 2.7~13.5mm lens (112°~46°),  
up to 60m IR, WDR (120dB), tripwire/intrusion, audio/alarm  
(excl. turret), IP67, IK10 (dome only), 12VDC/PoE



**4.0**  
MEGAPIXEL

**4K**  
ULTRA HD



VSIPP-4BIRMG  
(4.0MP Bullet)

**\$165**

VSIPP-8BIRMG  
(8.0MP Bullet)

**\$225**

VSIPP-4DIRMD  
(4.0MP Dome)

**\$165**

VSIPP-8DIRMD  
(8.0MP Dome)

**\$225**

VSIPP-4DIRMG  
(4.0MP Turret)

**\$165**

VSIPP-8DIRMG  
(8.0MP Turret)

**\$225**



# Eliminate false alarms with AI Person & Vehicle Detection

# AI

ARTIFICIAL INTELLIGENCE

## **6.0** MEGAPIXEL **6.0MP AI Camera Kits**

### 4 Channel NVR + 4 AI Cameras

- 1 x 4Ch Compact Series NVR, 4 x PoE, 1 x HDD bay (NVR4COM3)
- Upgrade to Pro Series NVR for 2 x HDD bay (NVR4PRO4)
- 1 x Pre-installed 1TB Surveillance HDD (HD1TBSV)
- 4 x 6.0MP 2.8mm (102°) AI turrets (VSIPP-6DIRG-I)

NVRKIT-C461F-AI **\$771** Upgrade to Pro Series NVR **+\$80**

### 8 Channel NVR + 8 AI Cameras

- 1 x 8Ch Compact Series NVR, 8 x PoE, 1 x HDD bay (NVR8COM3)
- Upgrade to Pro Series NVR for 2 x HDD bay (NVR8PRO7)
- 1 x Pre-installed 1TB Surveillance HDD (HD2TBSV)
- 8 x 6.0MP 2.8mm (102°) AI turrets (VSIPP-6DIRG-I)

NVRKIT-C862F-AI **\$1382** Upgrade to Pro Series NVR **+\$240**



\*Pro Series NVR shown above



### Pro AI Series Fixed Lens Cameras

Available in turret, vandal dome and mini bullet models  
4.0MP/6.0MP@25fps, 8.0MP@20fps, 2.8mm lens (102°), Starlight, WDR, AI people & vehicle detect, IP67 (IK10 dome)

- |                                  |  |                                 |
|----------------------------------|--|---------------------------------|
| VSIPP-4BIRG-I<br>(4.0MP Bullet)  | VSIPP-6DIRG-I<br>(6.0MP Turret)          | VSIPP-8BIRG-I<br>(8.0MP Bullet) |
| VSIPP-4DIRD-I<br>(4.0MP Dome)    | VSIPP-6DIRG-I-B<br>(6.0MP Turret, Black) | VSIPP-8DIRD-I<br>(8.0MP Dome)   |
| VSIPP-4DIRG2-I<br>(4.0MP Turret) | <b>\$135</b>                             | VSIPP-8DIRG-I<br>(8.0MP Turret) |
| <b>\$125</b>                     |  | <b>\$205</b>                    |



### Pro AI Series Motorised Lens Cameras

Available in bullet, vandal dome and turret models  
4.0MP@25fps, 8.0MP@20fps, motorised lens (113~31°), Starlight, WDR, AI people/vehicle detect., IP67 (IK10 dome)

- |                                  |                                  |
|----------------------------------|----------------------------------|
| VSIPP-4BIRMG-I<br>(4.0MP Bullet) | VSIPP-8BIRMG-I<br>(8.0MP Bullet) |
| VSIPP-4DIRMD-I<br>(4.0MP Dome)   | VSIPP-8DIRMD-I<br>(8.0MP Dome)   |
| VSIPP-4DIRMG-I<br>(4.0MP Turret) | VSIPP-8DIRMG-I<br>(8.0MP Turret) |
| <b>\$245EA</b>                   | <b>\$315EA</b>                   |



Professional IP Solutions

# Commercial and Enterprise with Ultimate Series



## Targeted searches using AI Face Recognition & Pro AI Series NVRs

Watch on our YouTube Channel



### Professional AI Series 16 & 32 Channel NVRs

- Face analysis & databases for Face Recognition applications
- Search by face, whitelist/blacklist, stranger alarm mode
- AI people & vehicle detection; enable using standard cams
- Alerts & playback via face recognition & perimeter protection
- Record beyond 12.0MP with 320Mbps incoming bandwidth
- Up to 320Mbps incoming bandwidth, H.265+ support
- 16 port PoE (8 x ePoE), 2/4 x HDD bays, alarm input/output
- Use Ultimate AI Series cams for face recognition up to 16CH



NVR16PRO-12 (16CH, 16PoE, 2 HDD) **\$1225**

NVR32PRO16P-12 (32CH, 16PoE, 4 HDD) **\$1495**



### Ultimate Series 32 & 64 Channel NVRs

- High performance surveillance Intel® Core™ processors
- Record up to 12.0MP resolution (4000 x 3000)
- 8 x SATA ports up to 10TB, max. 80TB HDD capacity
- Hot-spare & hot-swapping support (64CH only)
- 384Mbps bandwidth to handle large number of inputs
- RAID profiles support for HDD optimisation / redundancy
- 2 x gigabit RJ45 inputs, Alarm I/O programmable outputs
- Live view, playback & record via your phone/tablet



NVR32ULTNPV2 (32CH, No PoE, 8 HDD) **\$769**

NVR64ULT8S (64CH, No PoE, 8 HDD) **\$1395**



# The Best in AI Features with Ultimate Series Cameras

96%



## Ultimate AI Series Motorised Lens Cameras

- AI people detection for people counting; flow control use
  - People counting / flow control supported by standard NVRs
  - Face Capture for up to 16CH face recognition with AI NVR\*
  - AI people/vehicle detection via IVS & smart motion detection
  - Search playback & receive alerts via face database matching\*
  - Search playback by person and vehicle detection events
  - 1/1.18" sensor, auto iris (DC), True WDR (120dB), ePoE
  - Alarm/audio I/O (excl. turret), MicroSD, IP67, IK10 (dome)
  - Heater for use in up to -40°C operating temperature
- \* Pro AI Series NVR required for face recognition functions



### 4.0MP Standard Lens (2.7 ~ 12mm)

- VSIPU-4BIRM-I (Bullet)
- VSIPU-4DIRM-I (Dome)
- VSIPU-4DIRMG-I (Dome)

**\$425**

### 4.0MP Zoom Lens (8 ~ 32mm)

- VSIPU-4BIRM-IZ (Bullet)
- VSIPU-4DIRM-IZ (Dome)

**\$545**

### 8.0MP Standard Lens (2.7 ~ 12mm)

- VSIPU-8BIRM-I (Bullet)
- VSIPU-8DIRM-I (Dome)

**\$895**



## Centralised Management Solution for VIP Vision™



### IP System Management Centre

- Centralised CCTV, access control & intercom management
- Set different access rights hierarchies per user/group
- Manage building access w/ RFID tag & fingerprint scan
- Event & alarm logging, searching, timestamp & overlay
- Manual and automatic system backup/restore
- Built-in 1TB HDD - supports 3x 2.5" HDDs for storage
- High reliability with hot standby & hot swapping

NVR-SMC1 (DSS System) **\$3345**



\*Monitors not included





Professional IP Solutions

# The Best in Power & Performance with AI PTZ Cameras



## Pro AI Series PTZ Speed Domes

- Complete outdoor AI CCTV coverage with up to 32x optical zoom, endless 360° panning and -15°~90° tilt
- AI people/vehicle identification via IVS & SMD (motion detection)
- Search playback by person and vehicle detection events
- Trigger alerts using AI functions including people & vehicle detection via IVS rules or via motion detection (SMD+)
- Stream up to 8.0MP at 25fps - also available in 2.0MP & 4.0MP
- Starlight performance in low-light (0.005lx) & 150m infrared
- 1/1 alarm and 2/1 alarm interfaces (input/output)
- MicroSD slot, H.265+, true WDR (120dB), IP67 & IK10 rated
- Incl. bracket for wall mount; ceiling drop mount sold separately

VSIPPTZ-2IRP-I  
(2.0MP, 25x Zoom)

**\$595**

VSIPPTZ-4IRP-I  
(4.0MP, 32x Zoom)

**\$925**

VSIPPTZ-8IRP-I  
(8.0MP, 25x Zoom)

**\$1189**



## Pro AI Series 2.0MP Positioning Camera

- AI auto-tracking via person/vehicle detection
- Endless 360° pan and -90° ~ +90° tilt adjust.
- Stream 2.0MP@50fps; 4.8 ~ 120mm (61~2.8°)
- Starlight; min. illumination 0.005lx, 150m IR, IVS, true WDR, audio/alarm I/O, IP67, PoE+ (price includes wall mount)

VSIPPTZ-2IRW-I  
(2.0MP PTZ) **\$765**

VSBKTB730W  
(Wall mount) **\$48**



## Pro AI Series 4.0MP PTZ Dome

- Person/vehicle detection via IVS / SMD
- 4.0MP@25fps; 2.8 ~ 12mm (32~97°)
- 355° pan and 5° ~ +90° tilt adjust.
- Starlight; min. illumination 0.005lx
- 15m IR, true WDR, audio I/O, PoE+
- IK08/IP66, only Ø128mm x 65mm

VSIPPTZ-4IRM-I  
(4.0MP PTZ) **\$255**



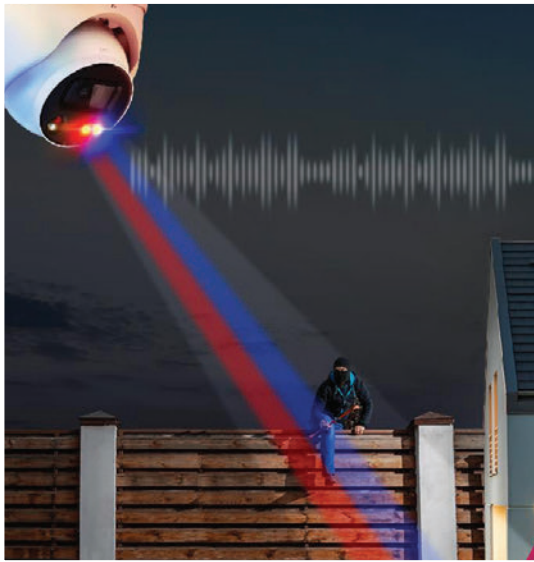


Professional IP Solutions

# Combine CCTV & Alarms with AI Deterrence



Activates siren & alarm lights in response to trigger events, such as Person & vehicle AI tripwire/intrusion & SMD+



## Pro AI 5.0MP / 8.0MP Active Deterrence Turret

- Siren & red/blue LED light activate on trigger to deter intruders
- White LED light; customise for always-on or activate on trigger
- Customisable siren tones or voice messages play on trigger
- Speak remotely via the smartphone/tablet application
- Trigger alerts using AI functions including people & vehicle detection via IVS rules or via motion detection (SMD+)
- Stream up to 5.0MP@20fps / 8.0MP@25fps, fixed 2.8mm (97°)
- Choice of 30m infrared or white light illumination at night
- Built-in microphone and 1/1 alarm interface (input/output)
- MicroSD slot, H.265+, true WDR (120dB), IP67 rated

VSIPP-5DG-ID2  
(5.0MP Turret)

**\$225**

VSIPP-8DG-ID2  
(8.0MP Turret)

**\$295**



# Transform your CCTV Installs with the Specialty Series



## Panorama Series 8.0MP AI Cameras

- 4 x 2.0MP 1/2.8" sensors; stream 4096 x 1800 at 25fps
- 30m range 180° infrared range & auto ICR day/night
- Intelligent AI detection to identify people and vehicles
- AI detect crowds, set thresholds & map on heatmap
- AI detect vehicle density & set vehicle count thresholds
- H.265 high efficiency video compression support
- MicroSD card slot for edge recording up to 256GB
- Audio and alarm interface input/outputs
- Digital WDR, BLC / HLC and 3D noise reduction
- IP67 weather & IK10 vandal resistant housing

VSIPPA-8BIR-I (Bullet)  
VSIPPA-8DIR-I (Dome)

**\$1145**



AI Crowd  
& Vehicle  
Density



## AI 5.0MP & 12.0MP Fisheye Domes

- Cover 360° day & night with a single camera
- Available in 5MP and 12MP, each with AI features
- Ceiling/floor/wall dewarp modes, ePTZ, ePanorama
- Each model has a built in mic, audio & alarm I/O
- 5MP@25fps and 12MP@25fps, 10m infrared
- 5MP: AI area people counting for up to 4 separate areas
- 12MP: AI queue management & area people counting



AI Area  
People  
Counting

12.0  
MEGAPIXEL

5.0  
MEGAPIXEL

VSIPFE-5IR-I **\$239**  
(5.0MP)

VSIPFE-12IR-I **\$1075**  
(12.0MP)

Full HD  
1080



## AI ANPR Bullet Camera

Automatic number plate recognition at 40km/h, white/blacklist + gate control, AI vehicle identification of size and colour, 2.0MP@25fps, 119~32° lens, shutter-speed windowing, IP67

VSIPNP-2BIRM-I **\$945**  
(2.0MP)



## Network Pinhole Cameras

VSIPPH-4M/L: 4.0MP@25fps, 2.8mm (101°), IVS, 0.005lx, microSD, 8m cable  
VSIPPH-2S2: 2.0MP@25fps, 108° lens, 12VDC, 35x44x30mm, 50cm cable

VSIPPH-4M +  
VSIPPH-4L

**\$515**

VSIPPH-2S2  
(Square Cam)

**\$145**

4.0  
MEGAPIXEL Full HD  
1080

3.0  
MEGAPIXEL



People  
Counting



## AI People Counting Camera

Stereo 2 x 3.0MP image for superior people counting accuracy, visualise with heatmap & export data, 10m IR, built-in mic, true WDR, IP67 rated

VSIPDL-3IR **\$1295** WAS **\$1545**  
(Dual Lens)





Professional IP Solutions

# The All-in-One Wall Cabinet for CCTV & Alarm Systems



## Convenient, compact system storage.

Give your installations the professional touch with wall-mounted security cabinets

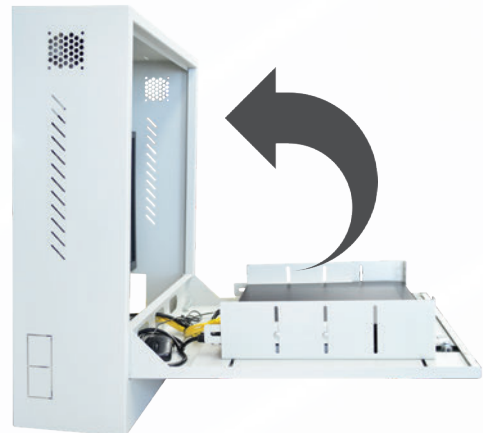


### Vertical Wall Mount Security Cabinet

- Compact; only 580(W) x 635(H)x 180(D)mm (closed)
- Capacity: 2RU, 240~480mm width, 465mm depth
- Fit up to 24" monitor, with 50/75/100 VESA mounts\*
- Integrated 4 x outlet powerboard & 2 x cabinet locks
- Cable management knockouts from all cabinet sides
- Superior ventilation; optional 2 x 50mm cooling fans
- 30kg cabinet load bearing capacity (10kg vertical shelf)
- 440mm width between mount points to fit wall studs
- SPCC steel construction and white powder coating
- *Vertical cable input orientation recommended*

SECCAB **\$295**  
(2RU Cabinet)

*\*Monitor sold separately, check monitor compatibility with supplier*



Open the cabinet for easy config, then fold it away to save space and keep the system secure.

Professional HDCVI Surveillance

# HD CCTV Over Coax Cable for Easy Upgrades



## Hurry! Models available only while stocks lasts!

Limited stock remaining on current generation HDCVI stock



**SECURVIEW** VICTORY SERIES **Watchguard**

### Compact AI & Pro AI 8CH HDCVI DVRs

- AI face recognition up to 2 channels (via BNC inputs)
- AI person/vehicle detect. via IVS (2CH) & SMD (8CH)
- Records up to 4K / 8.0MP (3840 x 2160) at 7fps
- Supports HDCVI, HDTVI, AHD, Analogue & IP inputs
- H.265 compression, HDMI/VGA, remote view
- Pro 2 x HDD bays; Compact 1 x HDD bay

**CVR8COM2 (8CH, 1 HDD) \$215**      **CVR8PRO4 (8CH, 2 HDD) \$292**

**Full HD 1080**  
**WARRANTY 4 YEARS**

**Watchguard**

### Compact Series 2.0MP HDCVI Cameras

2.0MP@25fps, 3.6mm (87°), 30m IR (turret 50m), HD/SD switchable video out, Starlight, full metal, IP67, 12VDC

**VSCVI-2BIRC (Bullet) \$52**      **VSCVI2MPDIRV5 (Turret) \$52**

**Bullet Mounts**  
**VSBKTA134 (Box): \$10<sup>50</sup>**  
**VSBKTA152E (Pole): \$15**

**Turret Mounts**  
**VSBKTA139 (Box): \$10<sup>50</sup>**  
**VSBKTB204W (Wall): \$12**

**SECURVIEW** VICTORY SERIES **Watchguard**

### Pro Series 8.0MP HDCVI Cameras

- 8.0MP@15fps, 2.8mm (111°), 3.7~11mm (112~46°)
- Huge 1/2" sensor, Ultra Low Light 0.005lx
- True WDR (120dB), 2D/3D DNR
- HDCVI/AHD/TVI/SD switchable, IP67, 12VDC

**VSCVI-8BIRG (8.0MP Bullet) \$105**      **VSCVI-8BIRP (8.0MP PIR Bullet) \$115**      **VSCVI-8DIRMG (8.0MP VF Turret) \$185**

**4K ULTRA HD**  
**WARRANTY 4 YEARS**



# Securview Cameras Support AHD, TVI and Analogue DVRs



## Pro Series 2.0MP / 5.0MP Motorised HDCVI Cameras

- 2.0MP@25fps, 5.0MP@20fps
- Motorised VF lens (109°~29°)
- Wide support for coax DVRs
- Dual voltage 12VDC & 24VAC
- Infrared: 80m bullet, 30m dome; Starlight, WDR, Audio I/O, IP67, IK10 (dome)



VSCVI2MPFBIRMV4 **\$115** WAS \$135  
(2.0MP, Bullet)

VSCVI2MPVDIRMV4 **\$115** WAS \$135  
(2.0MP, Dome)

VSCVI-5BIRMG **\$125** WAS \$145  
(5.0MP, Bullet)

VSCVI-5DIRMD **\$125** WAS \$145  
(5.0MP, Dome)



## 24/7 Colour 2.0MP HDCVI Turret Dome

2.0MP@25fps, 3.6mm (90°), 0.001lx  
24/7 colour, true WDR, built-in mic,  
wide coax DVR support, 12VDC



VSCVI-2DFCG **\$79** WAS \$89  
(2.0MP)



## Pro 5.0MP HDCVI Bullet

5.0MP@20fps, 2.8mm (98°), 40m IR, 0.005lx,  
WDR, built-in mic, wide  
coax DVR support,  
Starlight, IP67, 12VDC



VSCVI-5BIR2.8E **\$79** WAS \$89  
(5.0MP)

# Great Deals on Run Out HDCVI Vehicle Surveillance



## 4G / WiFi / GPS Mobile HDCVI DVR

- 8 channel DVR, built-in precision GPS, 4G & WiFi
- 8GW: Full HD 1080p (2.0MP) at 25fps
- VGA & 2x TV display out, Lockable HDD/SIM tray
- 2.5" HDD slots, 7/2 alarm I/O, CAN bus support, 6~36VDC
- **Vehicle Dome:** 2.0MP (111°), 20m IR, IK10/IP67

MCVR-GPS8GW (8CH, 2 HDD) **\$929** WAS \$1049  
VSCVI2MPVDIRFTV3 (2.0MP) **\$79** WAS \$94



# ENSA™

Solar LED Lighting

## Power & Illuminate Your Next Install with ENSA™



## ENSA™

### Solar Powered Lighting & Battery Systems

- Solar systems to power your next installation
- Pre-configured & ready for implementation
- Use for lighting, CCTV, WiFi, access & more
- High conversion rate monocrystalline panels
- Large capacity lithium batteries (LiFePO4)
- Fully adjustable LED lighting modules
- 180lm/W with microwave motion sensor
- Set parameters with included remote
- Optional bird spike strip included
- Ø50~60mm diameter pole mount



Configure Use  
with Included  
Remote



\*Pole/base not included with SSL-B units, sold separately

#### 56W Solar System

- 56W Monocrystalline Panel
- 218Wh LiFePO4 Battery
- 20W 180lm/W Area Light
- 145 x 75° Beam Angle
- 12.8VDC Output Voltage

SSL-B20MC

**\$729**

#### 80W Solar System

- 80W Monocrystalline Panel
- 320Wh LiFePO4 Battery
- 30W 180lm/W Area Light
- 145 x 75° Beam Angle
- 12.8VDC Output Voltage

SSL-B30MC

**\$955**

#### 120W Solar System

- 120W Monocrystalline Panel
- 500Wh LiFePO4 Battery
- 50W 180lm/W Area Light
- 145 x 100° Beam Angle
- 12.8VDC Output Voltage

SSL-B50MC

**\$1995**

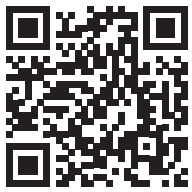
#### 180W Solar System

- 180W Monocrystalline Panel
- 1200Wh LiFePO4 Battery
- 60W 180lm/W Area Light
- 145 x 100° Beam Angle
- 25.6VDC Output Voltage

SSL-B60MC

**\$2499**





## Units Construction VIP Vision™ Timelapse

Watch on YouTube



### Solar Powered CCTV Surveillance

- 120W & 180W Solar Systems + AI surveillance
- Fully configured and ready for installation
- Remote view via 4G\* or 5GHz wireless links
- 4.0MP IR PTZ included, other options available\*
- Surveillance grade microSD storage included
- 500Wh or 1200Wh high capacity batteries

\*SIM sold separately, camera changes may increase cost. Built pole & base delivery dependent on area, contact your sales rep for details.

SLR-B120-4G/4W  
(120W Panel, 4G/WiFi)

**\$2949**

SLR-B180-4G/4W  
(180W Panel, 4G/WiFi)

**\$3349**



### Hinged Pole & Base Kits

- 4.5m hinged galvanised pole, no need for ladder or for working at heights
- Heavy duty, reinforced base 500kg, available assembled or unassembled

SLR-POL4.5H (4.5m pole): **\$780**

SLR-POLBASE (Unassembled): **\$475**

SLR-POLCONC(Assembled Base): **\$835**





Professional IP Solutions

# Scalable Intercoms for Small to Large Residential



## G Series 2.0MP IP PoE Door Station

2.0MP camera (160°), 2-way talk, 12VDC / PoE, Alarm & RS485 I/O, Aluminium, flush/surface mount

INTIPRDSG (2.0MP) **\$220**



## J Series 1.0MP IP PoE Door Station

1.0MP camera (122°), 2-way talk, 12VDC / PoE, Alarm & RS485 I/O, card reader, surface mount

INTIPRDSJ (1.0MP) **\$115**



## IP PoE Indoor Monitors

7" TFT touchscreen (1024 x 600), Wall or desktop mount, PoE / 12VDC, Record & snapshot (microSD card sold separately)

INTIPMONGW (White) **\$145**  
INTIPMONGB (Black) **\$115** WAS \$145



## IP PoE Handset Monitors

7" TFT touchscreen (1024 x 600), Wall or desktop mount, PoE / 12VDC, (INTIPMONDH-B desktop mount sold separately)

INTIPMONDWH2 **\$195**  
INTIPMONDBH2



## G Series PoE Intercom Kit

Includes door station, white monitor, PoE switch and surface mount box

INTIPRKITG **\$415**



## J Series PoE Intercom Kit

Includes door station, black monitor and PoE switch

INTIPRKITJ **\$279**



## 4-Wire Intercom Kit

Quick replacement for 4 & 6 core systems, white monitor, 12VDC PSU

INTKIT-A1 **\$99** WAS \$115





# Support for Multi-tenant Buildings and Apartments



## 2 & 4 Button Residential Door Stations

Calls monitor groups; call up to 10 monitors per button  
2.0MP wide camera (140°), NFC card unlock, PoE/12VDC, alarm I/O, RS485, aluminium chassis, surface mount  
Add door expander to control a second strike via monitor

INTIPDDS2 (2-Button) **\$185**    INTIPDDS4 (4-Button) **\$195**  
INTIPDM (RS485 Door Expander Module) **\$39**



## Residential & Apartment Door Stations

Apartment connect up to 200 monitors, calls individuals  
Residential connects up to 10 monitors, calls all monitors  
2.0MP ultra-wide camera (158°), card & code unlock, PoE/12VDC, RS485, text-display screen (apartment only)

INTIPRSD (Residential) **\$250** WAS ~~\$298~~  
INTIPASD (Apartment) **\$320** WAS ~~\$389~~    INTIPASDFB (Flush) **\$39**  
INTIPASDSB (Surface) **\$20**



**Run Out Special**



## Residential & Apartment IP Monitor

7" TFT capacitive touchscreen (800 x 480 pixels), add microSD card for up to 32GB storage, record / snapshot video calls/messages; DND

**INTIPMONPOE:** PoE switch for multi-monitor premises for monitor PoE power; connect up to 6 monitors

INTIPMON (White) **\$124** WAS ~~\$199~~    INTIPMONPOE (PoE Switch) **\$29** WAS ~~\$69~~



**2-wire Intercom Upgrades**



## 2-Wire Residential Intercom Kit

Upgrade existing intercoms using same cabling, 7" TFT capacitive touchscreen, add microSD 64GB, record / snapshot video calls/messages; Do Not Disturb mode

**INTIPPOE2W2:** Network & power for up to 20 2-wire indoor monitors & 2 door stations, 10-level cascading

INTIPMON2W2 (7" Monitor) **\$220**    INTIPPOE2W2 (2-Wire Switch) **\$99**



Professional IP Solutions

# The Perfect Finishing Touch with CCTV Accessories



## 19" Rackmount Data Cabinets

- Secure, lockable cabinets for NVRs & switches
- Available in wall & floor mount designs
- 4RU to 18RU; 450mm or 600mm depths
- Lockable, 5mm tempered glass door
- Removable side panel for easy installation
- Easy cable management with cable holes

*\* Flat packed - assembly required.*  
*\* Shelves not included - sold separately.*

## Wall Mount Cabinets:

- RMC-B4U450W2 (4RU 450mm): **\$125**
- RMC-B6U450W2 (6RU 450mm): **\$135**
- RMC-B6U600W2 (6RU 600mm): **\$159**
- RMC-B12U450W2 (12RU 450mm): **\$179**
- RMC-B12U600W2 (12RU 600mm): **\$209**
- RMC-B18U450W2 (18RU 450mm): **\$219**
- RMC-B18U600W2 (18RU 600mm): **\$219**

## Floor Mount Cabinet:

- RMC-B12U600F2 (12RU 600mm): **\$339**



**Cabinet Shelves:**  
 Starting from: **\$19**



## Network Video Decoders

- Network-roaming decoder displays all video feeds
- Video wall splicing for up to 36 channels per monitor
- Split screen control with zoom/merge/roam/overlay
- Support for audio, alarm, two-way talk, RS232, RS485
- Fisheye dewarp & multi-video split display
- Manage via web browser or VIP Vision™ SmartPSS
- **NVD-A4:** Decode 8CH 4K / 36CH 1080p / 144CH D1
- **NVD-A9:** Decode 12CH 4K / 48CH 1080p / 144CH D1



**Build Huge Displays up to 9x TVs**

NVD-A4 **\$1279** (4 x HDMI Out)  
 NVD-A9 **\$2235** (9 x HDMI Out)

## SECURVIEW

### Heavy Duty CCTV PSUs

- 18 individually fused outputs; compact metal case, indoor use
- Thermal cutoff, short circuit, high voltage & over current protection



*\*Battery not included*

PS12VDC10A18CHB (12VDC 10A output): **\$79**  
 PS24VAC10A18CH (24VAC 10A output): **\$110**

## SECURVIEW

### 28W LED Flood IR Illuminator

- Improve CCTV IR performance
- IP66 rated, metal chassis
- Range with beam angle: 30° (170m) / 60° (100m) / 120° (50m)



VSIR28W30/60/120D (30°, 60°, 120°): **\$129**



# High speed data transmission with PoE Switches



## Fast Hi-PoE Switch

8 port desktop PoE switch  
Uplink: 10/100/1000M (SWA8G)  
30W per port & 1 x HiPoE port 60W

VSPOE-SWA8G **\$82**  
(8 Port, 96W)



Gigabit PoE

## Gigabit Hi-PoE Switch

Desktop PoE switches, 1000M gigabit PoE ports, 30W per port & 1 x HiPoE port, 4 x SFP ports (VSPOE-SWB8G)

VSPOE-SWB8G **\$106**  
(8 Port, 96W)



SFP Fibre Ports

## Gigabit Fibre PoE Switch

4 x 1000M gigabit PoE ports, 4 x SFP fibre ports, 1000M uplink port, 30W per port & 1 x HiPoE port 90W

VSETH-SW9GF2 **\$160**  
(9 Port, 120W, SFP)



## PoE Midspan, Injector & Extender

**PoE Midspan & Extender:** 60W midspan, Delivers PoE to IP cameras up to 300m (<8W per cam) via 3 x PoE extenders (VSPOE-EX)

**PoE Injector:** 30W PoE+, 1000Mbps, 240VAC



VSPOE-MS (Midspan) **\$65**

VSPOE-EX (Extender) **\$32**

VSPOE-IN30 (Injector) **\$35**



## Rackmount Fast Hi-PoE Switches

- Fast 100Mbps PoE+ Base-T device ports
- Gigabit 1000Mbps Base-T & SFP Base-X uplink ports
- L2 Managed switch for security & switch customisation
- 30W per port with 2 x 60W orange Hi-PoE ports
- Total PoE load: 240W (-SWA16), 360W (-SWA24)
- Rackmount tabs for cabinet mounting

VSPOE-SWA16 **\$310** VSPOE-SWA24 **\$365**  
(16 port, 100M) (24 port, 100M)



## Rackmount Gigabit Hi-PoE Switches

- Gigabit 1000Mbps PoE+ Base-T device ports
- 2 x SFP Base-X uplink ports for fibre backbone
- L2 Managed switch for security & switch customisation
- 30W per port with 2 x 90W orange Hi-PoE ports
- Total PoE load: 240W (-SWB16G2), 360W (-SWB24G2)
- Rackmount tabs for cabinet mounting

VSPOE-SWB16G3 **\$439** VSPOE-SWB24G3 **\$490**  
(16 port, 1000M) (24 port, 1000M)



Unbreakable Communication

# Intuitive High Speed Wireless APs for Surveillance



## We pre-configure each unit to save you time



### Pre-Configured 5.8GHz Wireless AP Bridges

- Point-to-point & point-to-multipoint applications
- We program units for plug & play, saving you time
- 5.8GHz wireless access point, 900Mbps transfer speeds
- Up to 5km point-to-point range (LoS, H:60° / V:30°)
- PoE; pole & wall mount kits included; IP65 rated



LGAP300  
(Single Unit)

**\$86**

LGAP300-PACKA  
(2 x Wireless APs)

**\$184**

LGAP300-PACKB  
(3 x Wireless APs)

**\$276**



### 4G Wireless Access Point

- 4G LTE to wired & WiFi network
- 2 x 2.4GHz & 1 x 4GHz antennas
- Power via micro-USB or PoE

LGAP100-4G  
(300Mbps, 4G) **\$159** \*SIM sold separately



### 2.4/5GHz Wireless AP

- Build & extend WiFi access
- 2.4/5GHz antennas (1300Mbps)
- PoE; IP65 for outdoor use

LGAP200  
(1300Mbps) **\$142**



### 5GHz Easy Setup AP

- DIP switch config - no PC required
- 2x Gigabit LAN, 2km LoS, 867Mbps
- PoE switch or injector required

LONGEVITYCOM007  
(Single unit) **\$149**





# FLASHVIEW™

Visual Sensation Delivered

## The Best in CCTV Displays & Video Technology



### FLASHVIEW™

#### 1080p Surveillance Monitors

- Full HD 1080p (1920 x 1080) video resolution
- Suitable for continuous 24/7 operation
- Fast 6.5ms response time - no blurring or ghosting
- 178° (H) & 178°(V) extra wide viewing angles
- Vertical ports; 1 x HDMI inputs & 1 x VGA inputs
- 1 x audio output & 2 x built-in 1.5W stereo speakers
- Low energy consumption (<0.3W standby)
- VESA 75x75 (22") / 100x100 (24") mountable



LCDFL22G **\$188**  
(22" 1080p)



LCDFL24G **\$215**  
(24" 1080p)



### FLASHVIEW™

#### 2-way 4K HDMI Splitter

- 1 x HDMI input, 2 x HDMI output
- Supports up to 4K Ultra HD & 3D video
- Easy plug-and-play installation
- Includes 5VDC power supply

HDMI-SPL2P3  
(HDMI Splitter)

**\$35**

### FLASHVIEW™

#### HDMI Extender Over CAT6 (50m)

- Transmit HDMI signal over 50m via CAT6
- Supports up to Full HD 1080p & 3D video
- Up to 225MHz/2.5Gps bandwidth
- Includes 2 x 5VDC 1A power supplies



HDMI-EXT50M **\$65**  
(HDMI over CAT6)



### FLASHVIEW™ Copper & Fibre 4K HDMI Cables

- 4K performance fibre & copper HDMI cables
- 4K@60Hz, 18Gbps speed

HDMI-1C (1m): **\$4.75**  
HDMI-2C (2m): **\$6.50**  
HDMI-5C (5m): **\$12.50**  
HDMI-20F (Fibre, 20m): **\$95**



### FLASHVIEW™

#### Easy Run Fibre 4K HDMI Cables

- High performance fibre
- 4K@60Hz, 18Gbps speed
- Easy run detach. connector

HDMI-10FC (10m): **\$124**  
HDMI-20FC (20m): **\$142**  
HDMI-30FC (30m): **\$158**  
HDMI-50FC (50m): **\$192**

# Prevent Footage Loss & Protect Equipment



## PE Series Tower UPS - Step Wave

- Line interactive uninterruptible power supply
- Step wave, standard AU sockets, LED or LCD display
- Auto-voltage regulation, RJ45 over-voltage protection

UPS650VA (360W, 2 inputs, 28min@72W): **\$98**  
 UPS850VA (480W, 2 inputs, 26min@95W): **\$128**  
 UPS1000VA (600W, 4 inputs, LCD, 44min@120W): **\$210**  
 UPS1500VA (900W, 4 inputs, LCD, 32min@180W): **\$290**  
 UPS2000VA (1200W, 4 inputs, LCD, 24min@240W): **\$329**



## PR Series Tower UPS - Sine Wave

- Line interactive uninterruptible power supply
- Pure sinewave for greater stability & device compatibility
- IEC sockets (appliance couplers), LCD info display
- Auto-voltage regulation, RJ45 over-voltage protection

UPS1000VA-S (700W, 4 inputs, 44min@120W): **\$615**  
 UPS1500VA-S (1050W, 6 inputs, 32min@180W): **\$795**  
 UPS2000VA-S (1400W, 6 inputs, 24min@240W): **\$1065**

**Add Battery Pack to Extend Uptime**



## PR Series Rackmount UPS - Sine Wave

- Line interactive uninterruptible power supply (2U size)
- Pure sinewave for greater stability & device compatibility
- IEC sockets (up to 8 x 10A, 1 x 16A), LCD info display
- Auto-voltage regulation, RJ45 over-voltage protection

UPS1700VAXCRM (1350W, 8 input, 30min@270W): **\$1045**  
 UPS2200VAXCRM (1800W, 8 input, 47min@360W): **\$1245**  
 UPS3300VAXCRM (2700W, 9 input, 31min@540W): **\$1625**



**Only 330mm Depth - Fits in 450mm Deep 19" Racks**



## Compact Rackmount UPS - Sine Wave

- Online UPS for zero-delay power supply switching (2U)
- Pure sinewave for greater stability & device compatibility
- IEC sockets (up to 6 x 10A, LCD info display)
- Auto-voltage regulation, RJ45 over-voltage protection
- USB port & HID protocol interfacing with Windows PCs
- RS232 for PSU management & local/remote shutdown

UPS1100VA-ORM (900W, 6 input, 32min@180W): **\$1075**





AVOL

Professional Electrical Supplies

# Protect your Security Systems with AVOL™



## Line Interactive UPS - Simulated Sine Wave

- Available in 600VA, 1000VA & 1500VA models
- Line interactive UPS with simulated sinewave output
- Provides power backup & protection for up to four Australian 3-Pin devices
- Boost and buck AVR for voltage stabilisation
- Alarm alerts for battery mode, faults and low power
- Auto-voltage regulation, RJ45 passthrough protection
- LCD display with power and battery information

UPS-C600-L  
(360W, 2 inputs)

**\$89**

UPS-C1000-L  
(600W, 3 inputs)

**\$179**

UPS-C1500-L  
(900W, 4 inputs)

**\$245**



# Hardwired Business Security Systems up to 64 Zones



## Complete Hardwired WGAP864 Alarm System

- 8 zone expandable up to 64 zones
- 8 partitions, up to 5 programmable outputs (expandable up to 25)
- Dedicated panic zone
- Monitored siren output
- Kit includes 864 panel, choice of white/black keypad, 12V7A backup battery, 3 x dual-tech PIRs, 2 x reed switches, outdoor siren/strobe, indoor piezo siren, 16VAC PSU
- Expand for more zones, app control, wireless TX/RX & more



WGAP864PACK (8 Zone Alarm Kit) **\$345**

WGAP864PW/B (Panel + White or Black Keypad): **\$235**  
 WGAP864KPW/B (White or Black Keypad): **\$159**

WGAP864EXP816 (8 zone expander, 8-16): **\$18**  
 WGAP864EXP1664 (8 zone expander, 16+): **\$45**  
 WGAP864WRX2 (2CH wireless RX & keyfobs): **\$65**  
 WGAP864WRX16V2 (16CH wireless RX): **\$109**



## WiFi / IP Module for 864

- 864 alarm control via HYYP app
- Support RJ45 or WiFi connection
- Arm, disarm, trigger outputs & more

WGAP864IPMW (Phone not incl.) **\$159**



## TAKEX Wide Angle & Curtain PIRs

- PIR detectors, 11m range, 84° beam
- Pet immune: Immune up to 20kg
- Curtain: Vertical beam up to 16.5m

PIR-T45WP (Pet Immune): **\$36**  
 PIR-T46C (Curtain PIR): **\$40**  
 PIR-T4BKT (Bracket): **\$13.50**



## Honeywell 4-Wire Smoke Detector

- Photoelectric, 9V backup, NO/NC
- Interconnects to 24 smoke alarms
- Certified to AS3786:2014 standard

SMODET4-N **\$59**



# Wireless Security with Back-to-Base Monitoring



JUST ASK  
amazon alexa

works with the  
Google Assistant



\* 4G SIM for, SMS & B2B monitoring sold separately

## Watchguard Force Wireless WiFi / 4G Alarm Pack

The perfect alarm solution for homes & small businesses. Receive real-time notifications, control and monitor the alarm system via the smartphone app when connected to WiFi

- 4G & Contact ID for back to base monitoring\*
- WiFi self monitoring via Smart Home app
- Quick config of wide range of alarm sensors
- Reliable backup with 6 hours battery uptime
- Add up to 50 sensors, 10 remotes & 50 tags
- SMS power loss notifications\*
- Kit includes alarm hub, indoor PIR & bracket, reed switch, 2 x keyfob & 2 x RFID tags

ALL-PACK1  
(WG Force Kit)  
**\$225**



## Sensors & Accessories for Watchguard Force Alarms

- Indoor PIR & Reed (-PIR1), Indoor PIR (PIR-2), Outdoor PIR (-PIR3), Vibration & Reed (RSW1), Reed (RSW2)
- Wireless smoke detector (-SMD1), Outdoor Siren and Strobe (-SIR1), Indoor AC Siren (-SIR2)

ALL-PIR1  
**\$29**

ALL-PIR2  
**\$24**

ALL-PIR3  
**\$159**

ALL-RSW1  
**\$26**

ALL-RSW2  
**\$22**

ALL-SMD1  
**\$45**

ALL-SIR1  
**\$79**

ALL-SIR2  
**\$45**

# Stylish LED Light Fixtures Designed and Made in Italy



## Round & Square LED Bollard Lights

- In grey/black models in different styles; 2700K/4000K/6500K switchable

Carlo (6W)  
FU-CAR-6G **\$68**  
FU-CAR-6B

Ester (10W)  
FU-EST-10G **\$88**  
FU-EST-10B

Pina (18W)  
(Black Only) **\$95**  
FU-PIN-18B



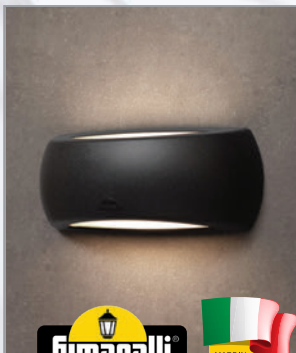
Switch  
Colour  
Temp.



## In-ground LED Lights

- IP67, shock resistant, black/grey

Ceci (6W)  
FU-CEC-6G **\$49**  
FU-CEC-6B



## Wallwashing LED Bulkhead Lights

- In grey/black models in different styles; 2700K/4000K/6500K switchable

Francy (6W)  
FU-FRA-6G **\$32**  
FU-FRA-6B

Lorenza (3W)  
FU-LOR-3G **\$27**  
FU-LOR-3B

Abram (3W)  
FU-ABR-3G **\$27**  
FU-ABR-3B



Switch  
Colour  
Temp.



## Wall Recessed LED Lights

- IP55, shock resistant, black/grey

Nina (6W)  
FU-NIN-7G **\$40**  
FU-NIN-7B





# Elegant Fixtures with Matching Poles & Mounts



## 40W Giorgio LED Area Lights

- 4800lm (120lm/W), 2700K/4000K/6500K
- Ø60mm mount, IP66, shock resistant
- 4 x GX53 LED bulbs
- Available in black or grey

Giorgio (40W)

FU-GIO-40G

FU-GIO-40B

**\$205**



## Gino LED Area Lights

- Available in 50W & 60W, 4000K
- Ø60mm, IP65, shock resistant
- 1 x E27 LED bulb
- Available in black or grey

Gino (50W)

FU-GIN-50G

FU-GIN-50B

**\$195**

Gino (60W)

FU-GIN-60G

FU-GIN-60B

**\$289**



## 50W Vivi LED Hanging Light

- 5300lm (120lm/W), 4000K warm white
- Ø60mm mount, IP65, shock resistant
- E27 LED bulb
- Available in black or grey

Vivi (50W)

FU-VIV-50G

FU-VIV-50B

**\$169**



## 50W Beppe LED Hanging Light

- 5300lm (120lm/W), 4000K warm white
- Ø60mm mount, IP65, shock resistant
- E27 LED bulb
- Available in black or grey

Beppe (50W)

FU-BEP-50G

FU-BEP-50B

**\$195**

# Stylish, light metal poles & brackets for LED & CCTV



## Ask us about pole-mounted CCTV installations

Complete, professional outdoors surveillance solutions



### Febo & Ektor Light Poles

- Italian modern design light poles
- Ø60mm mount for lights & brackets
- Uses FumaTech® pole technology
- Poles incl. J-bolts & bolt template
- Available in black or grey colour
- Supports pilar & midipilar (right)



- Hot dip galvanised structural inner pole
- High density, rigid & durable PU expanse
- Rust-free, shock resistant, UV stabilised, self extinguishing resin outer pole



**Febo (1m, Black Only)**  
FU-FEB-1B

**\$68**

**Ektor (2.5m)**  
FU-EKT-25G  
FU-EKT-25B

**\$320**

**Ektor (4m)**  
FU-EKT-4G  
FU-EKT-4B

**\$455**

**Ektor (6m)**  
FU-EKT-6G  
FU-EKT-6B

**\$899**

### Midipilar Pole Brackets

- 470mm from pole, grey/black
- FU-MID-P1G / B (Single): **\$49**  
FU-MID-P2G / B (Double): **\$85**  
FU-MID-P3G / B (Triple): **\$120**



### Pilar Pole Brackets

- 610mm from pole, grey/black
- FU-PIL-P1G / B (Single): **\$49**  
FU-PIL-P2G / B (Double): **\$85**



### Midipilar Wall Brackets

- 420mm from wall, grey/black
- FU-MID-WG / B: **\$32**



### Pilar Wall Brackets

- 650mm from wall, grey/black
- FU-PIL-WG / B: **\$95**



### New Lot Light Base

- Pedestal for surface or ceiling mount
- Ø60mm mount; grey/black colours

FU-NEW-G **\$12**  
FU-NEW-B





# ENSA™ LED Lighting & Energy Saving

## Energy Efficiency High Bays

**ENSA™**

### LHB-D Series UFO High Bays

- Light-weight high bays in 100W, 150W & 200W
- 130lm/W, >80 CRI, 50,000hrs rated LED lifespan
- Compact IP66 weather rated body; metal eyelet
- 5700K cool white, 90° beam angle as standard
- Optional: 60° / 120° lenses; 180° U-bracket



LHB-D100-C  
(100W)

**\$110**

LHB-D150-C  
(150W)

**\$125**

LHB-D200-C  
(200W)

**\$165**



## Pressure Washable for the Food Preparation Industry

**ENSA™**

### LHB-F Series: Food Grade High Bays

- Available in 100W, 150W or 200W models
- 135lm/W, >80 CRI, 50,000hrs rated LED lifespan
- IP69K rated for pressure cleaning in food prep facilities
- In 4000K & 5700K natural or cool white, 120° beam angle
- Separate output lead for 0~10V light control
- NSF, ETL, DLC, SAA, IPART, VEET certifications



LHB-F100-C/N  
(100W)

**\$269**

LHB-F150-C/N  
(150W)

**\$299**

LHB-F200-C/N  
(200W)

**\$325**

# ENSA™

LED Lighting & Energy Saving

## Performance LED Lighting for your Next Project



### ENSA™

#### LFL-F Series High Power LED Floods

- Available in 480W, 720W and 960W models
- Lumileds LEDs exceptional light output (+165lm/W)
- 60° beam angle, >80 CRI, 6500K cool white, IP66
- Customise lighting for large areas perfectly with 360° rotate & 140° tilt individually adjustable LED modules
- Ask us about lighting simulation & project assistance

LFL-F480-C (480W, 79,200lm)    LFL-F720-C (720W, 118,800lm)    LFL-F960-C (960W, 158,400lm)

**\$1275**   **\$1925**   **\$2635**



## Ask how we can assist you with your next project

Free resources & lighting simulations for project submission

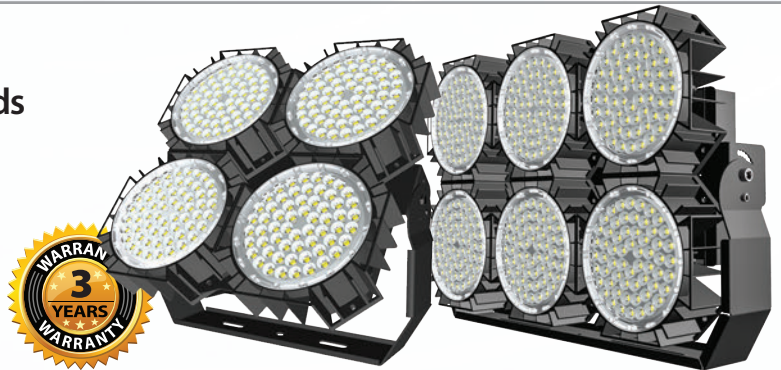
### ENSA™

#### LFL-G2 Series: High Power LED Floods

- Superb 160lm/W luminous efficacy, >80 CRI
- Available in 240W, 360W, 480W, 720W & 960W
- 180° adjustable U-bracket to direct luminaires
- Incredible 100,000hrs rated LED lifespan
- 5000K cool white colour temperature
- Wide 60°x100° beam angle models (30° optional)
- IP67 weather rated; ideal for sporting grounds

LFL-G240-C2 (240W, 38,400lm)    LFL-G360-C2 (360W, 57,600lm)    LFL-G480-C2 (480W, 81,600lm)    LFL-G720-C2 (720W, 115,200lm)    LFL-G960-C2 (960W, 153,600lm)

**\$445** WAS \$520    **\$770** WAS \$845    **\$826** WAS \$1025    **\$1205** WAS \$1530    **\$1760** WAS \$2145





# ENSA™ LED Lighting & Energy Saving Professional Street Lighting



## ENSA™

### LSL-B Series: LED Area/Street Lights

- Built in photocell models for dusk/dawn switching
- Available in 150W and 200W models
- Versatile mounting with 5 adjustable light brackets
- Slip fit, fixed/adjust pole, trunnion & yoke wall mounts
- 135lm/W, 5000K cool white, >70 CRI, 50,000hrs lifespan
- 155 x 85° beam angle, 1~10V / PWM dimmable
- IP66/IK08 weather/vandal rated, 20KV surge protection



LSL-B150-CP (150W, 20,250lm) **\$219** WAS \$248

LSL-B200-CP (200W, 27,000lm) **\$269** WAS \$299



LSL-BKTS (Slip Fitter) **\$24**



LSL-BKTT (Trunnion) **\$22**



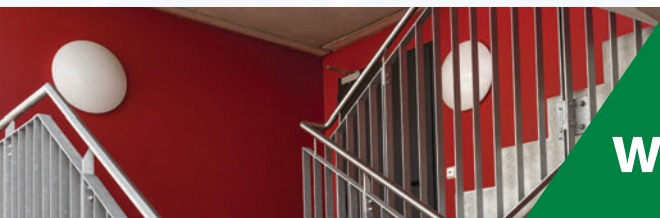
LSL-BKTY100 (150W)  
LSL-BKTY200 (200W)  
(U-Wall Mount) **\$19**



LSL-BKTP (Fixed Pole) **\$18**



LSL-BKTA (Adjust. Pole) **\$29**



## Intelligent oyster lighting with optional battery backup

## ENSA™

### 16W LED Oyster Lighting

- Standard, sensor & sensor+battery backup models
- 1200lm, 120° beam angle, 30,000hrs lifespan
- 3000K warm white or 5000K cool white colour temp.
- Frosted diffuser, IP66 & IK10 weather/vandal rated
- **Sensor:** Adjustable on-time delay & standby modes
- **Battery:** 3.7V 1500mAh NiMH >300min uptime at 1.2W

LOL-A16-W/C (Standard) **\$25** WAS \$31

LOL-A16-WS2/CS2 (Sensor Light) **\$36** WAS \$46

LOL-A16-WSE/CSE (Sensor & Battery) **\$49** WAS \$59



# ENSA™

LED Lighting & Energy Saving

## Deliver Efficiency and Security with ENSA Lighting



### ENSA™

#### LFL-C2 Series Sensor Flood Lights

- 120lm/W luminous efficacy, >80 CRI
- Effective light distribution with 120° beam angle
- Adjustable PIR detection up to 12m with a 140° arc
- Adjustable on-time delay (5s ~ 5min)
- 5000K cool white, 35,000hrs rated LED lifespan
- 180° adjustable U-bracket & PIR bracket for flexibility
- IP65 weather rated, 3 year warranty



LFL-C20-CS2-5 **\$42** WAS \$47  
(20W, 2400lm)

LFL-C30-CS2-5 **\$59** WAS \$64  
(30W, 3600lm)

LFL-C50-CS2-5 **\$72** WAS \$82  
(50W, 6000lm)

### ENSA™

#### LFL-B2 Series Pro LED Flood Lights

- Superb 150lm/W luminous efficacy, >70 CRI
- Built with high performance Lumiled LEDs
- Wide 120° beam angle, circular light distribution
- 3000K/5000K warm/cool white colour temperature
- Outstanding 50,000hrs rated LED lifespan
- 180° adjustable U-bracket to direct entire luminaire
- Aluminium & toughened glass construction
- IP65 weather rated, 5 year warranty



LFL-B20-W2 (20W, 3000K) **\$35** WAS \$40  
LFL-B20-C2 (20W, 5000K)

LFL-B30-W2 (30W, 3000K) **\$45** WAS \$50  
LFL-B30-C2 (30W, 5000K)

LFL-B50-W2 (50W, 3000K) **\$63** WAS \$72  
LFL-B50-C2 (50W, 5000K)

LFL-B80-C2 **\$99** WAS \$114  
(80W, 5000K)

LFL-B100-C2 **\$116** WAS \$135  
(100W, 5000K)

LFL-B150-C2 **\$165** WAS \$179  
(150W, 5000K)

LFL-B200-C2 **\$195** WAS \$225  
(200W, 5000K)



# ENSA™

LED Lighting & Energy Saving

## Make Any Light a Security Light with Energy Switches

### Complete Sensor Review

See our video intro and learn the range



### ENSA™ Intelligent Motion Sensor & Dusk/Dawn Switches



- 12m 180°
- Wall mount
- PIR detection
- IP65 rated

ENSA-PS1

**\$15**

- 4m x 20m
- Corridors
- PIR detection
- IP20 rated

ENSA-PS2

**\$23**

- Ø6m 360°
- Recessed
- PIR detection
- IP20 rated

ENSA-PS3

**\$14**

- Ø20m 360°
- Ceiling mount
- PIR detection
- IP65 rated

ENSA-PS4

**\$28**

- Ø8m 360°
- Concealed
- Microwave
- Indoor only

ENSA-MS1

**\$28**

- 15m 180°
- Wall mount
- Microwave
- IP65 rated

ENSA-MS6

**\$22**

- Ø16m 360°
- Ceiling mount
- Microwave
- IP20 rated

ENSA-MS2

**\$20**

- 2 ~ 100 Lux
- DIN rail/probe
- Dusk/dawn
- IP65 rated

ENSA-LC3

**\$15**

- 5 ~ 50 Lux
- Wall clip
- Dusk/dawn
- IP65 rated

ENSA-LC1W

**\$12**

# ENSA™ LED Lighting & Energy Saving Commercial LED Lighting



## ENSA™ LPL-C Series LED Panel Lights

- 40W, 4800lm (120lm/W), 110° beam angle
- 5000K cool white colour temperature
- Frosted diffuser, 3 different mounting options
- UGR <22, 300 x 1200mm hole cut size

LPL-C40-C  
(40W, 4800lm)  
**\$39**



Mount Kits  
LPL-C-S (Surface): **\$22.50**  
LPL-C-R (Recessed): **\$26.50**  
LPL-C-H (Hanging): **\$9.50**



Hurry  
Stock is  
Limited

## ENSA™ PIR Sensor Tubes

- 4ft / 1200mm, T8 size
- 18W, 80lm/W, 120°
- 8m PIR motion detect.
- 60s on-time, dims to 30% on standby

LTU-C18-CS **\$18** WAS **\$25**  
(1800lm)

## ENSA™ IP65 LED Sensor Batten Lights

- Accepted for use in NSW Energy Saving Scheme
- Light & microwave motion sensor control light
- Adjustable 2 stage dim (100% -> Dim -> Off)
- 120° beam angle, 35,000hrs LED lifespan, IP65



S2 - Sensor Light  
LEDBT18WS2 (18W, 600mm): **\$86**  
LEDBT36WS2 (36W, 1200mm): **\$102**

SE - Sensor & Battery  
LEDBT18WSE (18W, 600mm): **\$119** WAS \$139  
LEDBT36WSE (36W, 1200mm): **\$142** WAS \$156

## ENSA™ LED Downlights

- Recessed & surface mount
- Available in warm or cool white
- Ø155mm (DT12) / Ø205mm (DT18) hole cut
- 110° beam angle, 35,000hrs LED lifespan



Recessed Ceiling Mount  
LDL-DT12-W/C (12W, 3/6000K): **\$12**  
LDL-DT18-W/C (18W, 3/6000K): **\$16**

Surface Mount  
LDL-DS12-C (12W, 6000K): **\$14**

## ENSA™ Portable Rechargeable LED Flood Light

- 20W battery powered flood light
- 6500K cool white colour temp.
- 120° beam angle, 30,000hrs lifespan



LEDFL20W6KR **\$52**  
(1600lm)



# ENSA™

LED Lighting & Energy Saving

## Efficient Lighting Upgrades Done in a Flash



## High Bay replacement lights for easy energy upgrades

### ENSA™

#### Highbay E40 Light Globes

- Quick replace HID & metal-halide high bays
- 100W & 160W models, E40 screw-fit base
- 125lm/W, >80 CRI, 25,000hrs lifespan
- 4000K natural or 6500K cool white colour
- Optional reflector to reduce glare

LBL-D100-E40C/N **\$42** WAS \$65  
(100W, cool/natural)

LBL-D160-E40C/N **\$98** WAS \$129  
(160W, cool/natural)



### ENSA™

#### LED Light Globes

- 40W/45W, 130lmW
- E27/E40 screw fit LEDs
- 25,000hr rated lifespan
- 4000K natural white



Tulip E27/E40:

LBL-D40-E27N (40W, E27, natural) **\$23** WAS \$27  
LBL-D40-E40N (40W, E40, natural)

Round E27:

LBL-D45-E27N (45W, E27, natural) **\$16** WAS \$20



# AVOL

The Genius of Electricity

## Energy Efficient Lighting for Home and Businesses



### Ultimate value flood lighting



#### H Series LED Flood Lighting

- 80lm/W, 6000K, 120° beam, IP66 rated, preterminated AC plug

LFL-H50-C (50W, 4000lm)	LFL-H100-C (100W, 8000lm)	LFL-H150-C (150W, 12000lm)	LFL-H200-C (200W, 16000lm)
<b>\$19</b> WAS \$25	<b>\$36</b> WAS \$44	<b>\$69</b> WAS \$89	<b>\$85</b> WAS \$115



#### H Series LED Sensor Flood

- 50W, 80lm/W, 4000lm light output
- 6000K cool white, 120° beam angle
- 12m PIR motion detection arc
- 35,000hrs lifespan, 3-pin AC plug
- IP65 rated chassis, U-bracket

LFL-H50-CS  
(50W, 4000lm) **\$26** WAS \$32



#### E Series LED High Bays

- 100lm/W, 90° beam, >80 CRI, 35,000hrs lifespan, IP65, 6000K, eyelet, 3-pin AC plug

LHB-E100-C (100W, 10000lm)	<b>\$69</b>
LHB-E150-C (150W, 15000lm)	<b>\$99</b>
LHB-E200-C (200W, 20000lm)	<b>\$129</b>



#### C Series LED Street Lights

- 110lm/W, 35,000hrs, 90°x130° beam angle, 6000K, IP65 rated chassis.
- 180° adjustable Ø54mm (50W) or Ø62mm slip fit pole support,
- Pole sold separately

LSL-C50-C (50W):	<b>\$44</b> WAS \$59
LSL-C100-C (100W):	<b>\$80</b> WAS \$105
LSL-C150-C (150W):	<b>\$110</b> WAS \$145
LSL-C200-C (200W):	<b>\$160</b> WAS \$185





# Super Savings on Electrical



## AVOL™ White/Grey Medium Duty Rigid Conduit (4m)

- Telecom/Electrical
  - PVC-U material
  - AS/NZS 2053
  - 5 year warranty
- |   |                                    |
|---|------------------------------------|
| CON100 (Ø20mm Grey) <b>\$2.90</b>       | CON120 (Ø20mm White) <b>\$2.90</b> |
| CON101 (Ø25mm Grey) <b>\$3.20</b>       | CON121 (Ø25mm White) <b>\$3.75</b> |
| CONMD-32MM-G (Ø32mm Grey) <b>\$4.60</b> | CON122 (Ø32mm White) <b>\$5.60</b> |
| CONMD-40MM-G (Ø40mm Grey) <b>\$6.50</b> |                                    |



## Orange Heavy Duty Rigid Conduit

- CONHD-20MM-O (Ø20mm) **\$2.75**
- CONHD-25MM-O (Ø25mm) **\$3.70**
- CONHD-32MM-O (Ø32mm) **\$5.55**
- CONHD-40MM-O (Ø40mm) **\$7.25**
- CONHD-50MM-O (Ø50mm) **\$11.45**



## 90° Sweep Bends, Solid Elbows, Inspection Elbows & Tees

- 90° Sweep Bends from **\$0.50**
- Inspection Elbows from **\$0.70**



## HD & MD Corrugated Conduit Bundle Lengths Ø20mm - Ø50mm

- White MD C.Conduit (50m) from **\$28**
- Orange HD C.Conduit (25m) from **\$24**



## 1/2/3/4-way Junction Boxes & Deep Junction Boxes

- Junction boxes from **\$1.15**
- Deep Junction boxes from **\$1.50**



## Galvanised & Stainless Half Saddles, Plastic Saddles, Saddle Spacers

- Galvanised Steel Half Saddles **\$0.35**
- Plastic Saddles from **\$0.15**
- Saddle Spacers from **\$0.35**



## Couplings, Reducers, Locating Flanges, Nylon & Extension Rings

- Conduit Couplings from **\$0.20**
- Plain Conduit Reducers from **\$0.30**
- Locating Flanges from **\$0.45**



## Quick Fit & Surface Plug Bases, Double Power Points

- Quick Fit Plugs from **\$2.60**
- Surface Plug Bases from **\$1.80**
- Double Power Points from **\$3.95**



## Electrical Grid Plates (Blank, 1-6 Gang), 1-Gang Light Switch

- Electrical Grid Plates from **\$1.75**
- 1-Gang Light Switches from **\$2.75**



## Junction Boxes, Terminal Boxes, C-clips & Terminal Blocks

- Junction Boxes from **\$2.20**
- Fixed Terminal Boxes from **\$1.70**
- Single Terminal Block (50pcs) from **\$12.00**



Professional IP Solutions

# All the Cabling You Need



## CAT5e/CAT6 305m Pullboxes

- 305m unterminated network cable
- Supports Power over Ethernet
- ACMA approved
- **CAT5e:** Available in blue, yellow & white
- **CAT6:** Available in blue, red and grey

CAT5EBLU-47MM  
(CAT5e Blue)

CAT6BLU-50MM  
(CAT6 Blue)

CAT5EYL-47MM  
(CAT5e Yellow)

CAT6RED-50MM  
(CAT6 Red)

CAT5EWH  
(CAT5e White)

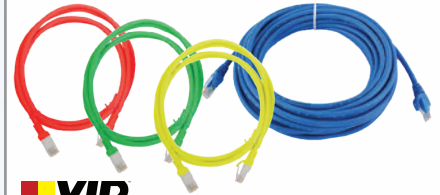
CAT6GRA-50MM  
(CAT6 Grey)

**\$89<sup>EA</sup>**

**\$125<sup>EA</sup>**



RJ45 connectors  
sold separately



## Preterminated CAT5/6 Cable

### CAT6 Patch Cable

- NETCABLE025RED6 (0.25m Red): **\$3**
- NETCABLE050RED6 (0.5m Red): **\$3<sup>50</sup>**
- NETCABLE050GRN6 (0.5m Green): **\$3<sup>50</sup>**
- NETCABLE050YEL6 (0.5m Yellow): **\$3<sup>50</sup>**

### CAT5 Ethernet Cable

- NETCABLE10 (10m): **\$9**
- NETCABLE20 (20m): **\$13**
- NETCABLE30 (30m): **\$18**



## Combined Power & 4K BNC Video Lead

- Preterminated; for HDCVI CCTV

VIDPWR20RG59 (20m): **\$12**  
VIDPWR0RG59 (30m): **\$35**



## 200m 6-Core Access Control Cable

- Tinned copper cable
  - Strand: 6 x 7/0.2mm
- AC200G**  
**\$112**



## 200m Combined Figure 8 & 4/6/6 Core Alarm / Access Control Cable

- 1 x 6-core access control cable
  - 1 x 4-core & 6-core alarm cable
  - 1 x figure 8 power cable
- APAC200G**  
**\$575**

(02) 9671 6711 ▪ SALES@RHINO.COM.AU ▪ WWW.RHINO.COM.AU



Supporting your installations since 1978  
Security Master Licence: 407530935  
ASIAL Platinum Member

**McGraths Hill Head Office & Distribution**  
9 Hannabus Place McGraths Hill, NSW 2756

**Haberfield Showroom & Sales Office**  
223-225 Ramsay Street Haberfield, NSW 2045

**Guildford Showroom & Sales Office**  
577 Woodville Road Guildford, NSW 2161

Exclusive to trade customers only. Released JAN 2022, supersedes all past offers, valid while stocks last. Pricing & range may be subject to change without notice; all prices exclude GST. Errors & omissions excepted.