



TRADE SPECIALS

Exclusive trade only specials: Available until 28th Feb 2021



CCTV | ALARMS | INTERCOMS | ACCESS | LED | SOLAR SYSTEMS

NEW VERTICAL CABINET

NEW ENSA LED PANELS

STAY COOL THIS SUMMER

NEW IP INTERCOM KITS

NEW 8MP AIP RANGE

NEW ENSA LED FLOODS

4K ULTRA HD

Deliver the best install results

The latest solutions for professional installations from RhinoCo

Contact us today • (02) 9671 6711 • sales@rhino.com.au • www.rhino.com.au

Industry leading **4 year warranty** offered on all professional products

Well known, unique & **protected brands** to add value to your installs

We will **match or better pricing** for any directly comparable product

Enjoy **free expert technical support** on the entire product range

Ultra HD recording solutions for a wide variety of applications.

» Deliver more value in your installs with 4K NVRs across the range

Compact NVR Series Up to 16 Channels | Up to 2 x HDD Bays



Compact 4 Channel PoE NVR

Record 8.0MP, up to 80Mbps, 4 port PoE, 1 x HDD up to 10TB, 1 x HDMI/VGA, H.265, smart fan, QR code remote config.

NVR4COM3
(4CH, 4 x PoE)



Compact 8 Channel PoE NVR

Record 8.0MP, up to 80Mbps, 8 port PoE, 1 x HDD up to 10TB, 1 x HDMI/VGA, H.265, smart fan, QR code remote config.

NVR8COM3
(8CH, 8 x PoE)



Compact 16 Channel PoE NVR

Record 8.0MP, up to 128Mbps, 16 port PoE, 2 x HDD up to 10TB each, 1 x HDMI/VGA, H.265, smart fan, QR code remote config.

NVR16COM3
(16CH, 16 x PoE)

Professional NVR Series Up to 32 Channels | Up to 4 x HDD Bays



Professional 4 Channel PoE NVR

Record 8.0MP/4K, up to 128Mbps, 4 port PoE, H.265+, 2 x HDD up to 10TB each, 1 x HDMI, 1 x VGA, 4/2 alarm I/O, QR code remote config.

NVR4PRO4
(4CH, 4 x PoE)



Professional 8 Channel PoE NVR

Record 12.0MP, up to 320Mbps, 8 port PoE (8 x ePoE), H.265+, 2 x HDD up to 10TB each, 1 x HDMI, 1 x VGA, 4/2 alarm I/O, QR code config.

NVR8PRO7
(8CH, 8 x PoE)



Professional 16 Channel PoE NVR

Record 12.0MP, up to 320Mbps, 16 port PoE (8 x ePoE), H.265+, 4 x HDD up to 10TB each, 2 x HDMI, 1 x VGA, 16/6 alarm I/O, QR code config.

NVR16PRO7
(16CH, 16 x PoE)



Professional 24 Channel PoE NVR

Record 12.0MP, up to 320Mbps, 24 port PoE, H.265+, 4 x HDD up to 10TB each, 2 x HDMI, 1 x VGA, 16/6 alarm I/O, QR code config.

NVR24PRO6
(24CH, 24 x PoE)



Professional 32 Channel PoE NVR

Record 12.0MP, up to 320Mbps, 16 port PoE (8 x ePoE), H.265+, 4 x HDD up to 10TB each, 2 x HDMI, 1 x VGA, 16/6 alarm I/O, QR code config.

NVR32PRO16P3
(32CH, 16 x PoE)



Professional 16/32Ch Non-PoE NVR

Record 12.0MP, up to 320Mbps, 16/32 channels, H.265, QR code, Alarm I/O, HDMI/VGA, eSATA, RS232/485, 1 x RJ45 (16CH), 2 x RJ45 (32CH)

NVR16PRO6NP (16CH, 2 x HDD)
NVR32PRONP2 (32CH, 4 x HDD)

Superb installation results.

Need a strong, secure cabinet for a small space? New SECCAB is suitable for 19" rackmount devices & more.



Vertical Wall Mount Security Cabinet

- Compact; only 580(W) x 635(H) x 180(D)mm (closed)
- Capacity: 2RU, 240~480mm width, 465mm depth
- Fit up to 24" monitor, with 50/75/100 VESA mounts
- Integrated 4 x outlet powerboard & 2 x cabinet locks
- Cable management knockouts from all cabinet sides
- Superior ventilation; optional 2 x 50mm cooling fans
- 30kg cabinet load bearing capacity (10kg vertical shelf)
- 440mm width between mount points to fit wall studs
- SPCC steel construction and white powder coating

SECCAB
(2RU Cabinet)

Suggested monitor LCDFL24V, see monitor section

*Fits our
4 HDD Bay
NVR/DVRs*



Exciting new additions to the VIP Vision AI surveillance range

» See our extended person/vehicle detection AI camera range

Professional AI Series Up to 12.0MP | Perimeter Protection | LED, ANPR, PTZ & Fisheye



Professional AI Series 16/32CH PoE NVRs

- Face analysis & databases for Face Recognition applications
- Search by face, create whitelist/blacklist, stranger alarm mode
- Perimeter protection by NVR; enables function on standard cameras
- Alerts & playback via face recognition & perimeter protection
- Record beyond 12.0MP with 320Mbps incoming bandwidth
- 16 port PoE (8 x ePoE), 2/4 x HDD bays, alarm input/output
- Use Ultimate AI Series cameras for face recognition up to 16CH



NVR16PRO-I
(16CH, 16 x PoE)

NVR32PRO16P-I
(32CH, 16 x PoE)



Ultimate Series 32/64CH NVRs

- High performance surveillance with Intel® Core™ processors
- Record up to 12.0MP resolution (4000 x 3000), beyond 4K/Ultra HD
- 8 x SATA HDD bays up to 80TB; hot-spare/swap support (64CH only)
- 384Mbps incoming bandwidth to handle large number of inputs
- RAID profiles support for HDD optimisation and redundancy
- 2 x gigabit RJ45 inputs, Alarm I/O programmable relay outputs



NVR32ULTNPV2
(32CH, No PoE)

NVR64ULT8S
(64CH, No PoE)



Traffic Series 2.0MP AI Motorised ANPR Bullet

- Automatic number-plate recognition (ANPR)
- White/blacklist control; auto gate control via ANPR
- Identify vehicle size, colour & direction with AI

2.0MP@25fps, 2.7~13.5mm (119°~32°) with auto iris, true WDR, highlight compensation, support shutter speed windowing, microSD, IP67

VSIPNP-2BIRM-I



12.0MP AI Infrared Fisheye Dome

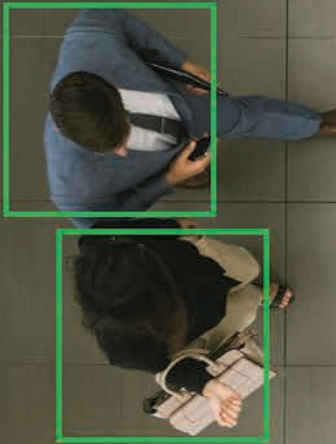
People counting, queue management & heat-mapping, 12.0MP @25fps, 360° field of view & 360° 10m infrared, built-in mic, microSD, IVS, IP67/IK10



VSIPFE-12IR-I

AI flow control solutions.

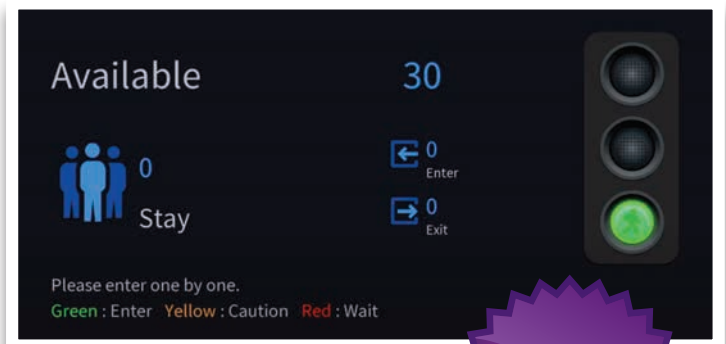
Control customer access with AI people counting using Ultimate Series IP cameras from VIP Vision™.



Flow Control Live View Display

Ultimate AI Series for People Counting

- AI people detection for people counting; flow control use
- People counting / flow control supported by standard NVRs
- Face Capture for up to 16CH face recognition with AI NVR
- AI people/vehicle identification via IVS & motion detection
- Search playback by person and vehicle detection events
- Stream up to 8.0MP (3840 x 2160) in real-time 25fps
- 2.7~12.0mm motorised varifocal lens with auto iris
- Huge 1/1.18" image sensor & True WDR (120dB)
- Alarm/audio I/O, ePoE, MicroSD, IP67, IK10 (dome)
- Heater for use in up to -40°C operating temperature



Supported by our Pro Series NVRs



4.0MP & 8.0MP Ultimate AI Series IP Cameras

- VSIPU-4BIRM-I (4.0MP VF Bullet)
- VSIPU-8BIRM-I (8.0MP VF Bullet)
- VSIPU-4DIRM-I (4.0MP VF Dome)
- VSIPU-8DIRM-I (8.0MP VF Dome)
- VSIPU-4DIRMG-I (4.0MP VF Turret)

3.0MP People Counting Camera

Dual lens for best in person detection & tracking accuracy for people in large retail applications.

VSIPDL-3IR (2 x 3.0MP)

Smart motion detection and IVS using AI machine learning.

» Prevent false alarms with the VIP Vision™ Professional AI Series

Professional AI Series Up to 8.0MP | Person & Vehicle Detection | Fixed & Motorised Lens



Professional AI Series Cameras

- AI people/vehicle identification via IVS & motion detection
- Search playback by person and vehicle detection events
- Ideal for use with standard Pro and Compact Series NVRs
- 8.0MP (3840 x 2160) at 20fps (25fps without AI enabled)
- Infrared illumination system up to 60m range
- Fixed 2.8mm & motorised varifocal 2.7~13.5mm models
- Starlight performance; min. colour illumination 0.005lx
- Audio (built-in mic or RCA) & RCA output (VF dome/bullet)
- True WDR (120dB), MicroSD slot, IP67, IK10 (vandal dome)



VSIPP-6DIRG-I
(6.0MP Turret)

VSIPP-8DIRG-I
(8.0MP Turret)



No AI NVR required:
Use AI cameras with standard
Pro & Compact Series NVRs



VSIPP-4DIRG-I
(4.0MP Turret)

VSIPP-4BIRG-I
(4.0MP Bullet)

VSIPP-8BIRG-I
(8.0MP Bullet)

VSIPP-4DIRD-I
(4.0MP Dome)

VSIPP-8DIRD-I
(8.0MP Dome)



VSIPP-4BIRMG-I
(4.0MP VF Bullet)

VSIPP-4DIRMG-I
(4.0MP VF Turret)

VSIPP-8DIRMG-I
(8.0MP VF Turret)

VSIPP-4DIRMD-I
(4.0MP VF Dome)

VSIPP-8DIRMD-I
(8.0MP VF Dome)

Combine CCTV & security.

Warn off intruders with built-in siren and LED light with new AI-powered active deterrence IP cameras.



**"Attention:
You have entered
a secure area.
Please report to
the security office."**

NEW



Intruder
Deterrence



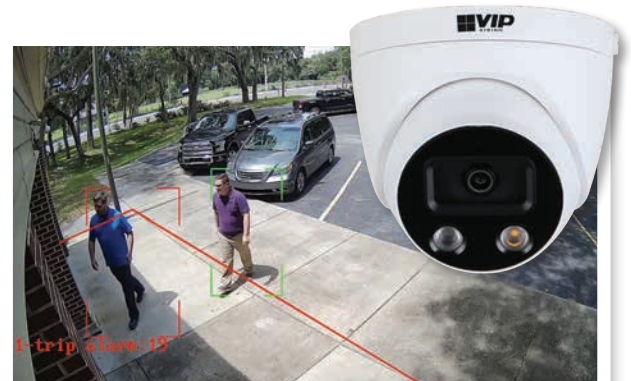
AI People
& Vehicle
Detection



Pro AI 5.0MP Active Deterrence Turret

- Siren & LED light activate on video trigger to deter intruders
- Customise LED light for always-on or flashing on trigger
- Customise your own siren tone or recording to play on trigger
- Speak remotely via the smartphone/tablet application
- Trigger alerts using AI functions including people & vehicle detection via IVS rules or via motion detection (SMD+)
- Stream up to 5.0MP at 20fps, fixed lens 2.8mm (102°)
- Starlight performance in low-light (0.005lx) & 50m infrared
- Built-in microphone and 1/1 alarm interface (input/output)
- MicroSD slot, H.265+, true WDR (120dB), IP67 rated

**VSIPP-5DIRG-ID
(5.0MP Dome)**



**Activates loud siren & flashing strobe light in
reponse to IVS events, eg. Tripwire & Intrusion
and AI Perimeter Protection at set times**

Super IP surveillance specials to power your next installation.

» Deliver more value in your installs with amazing IP CCTV deals

IP Surveillance Up to 4K / 8.0MP | Fixed Lens | Motorised Lens



Pro Series Motorised IP Cameras

- Stream up to 8.0MP (3840 x 2160) at 15fps
- 2.7 ~ 13.5mm motorised varifocal lens (112°~46°)
- 3.7 ~ 11mm motorised lens & 4K@25fps (8MP Bullet)
- H.265 encoding for efficient storage & streaming
- Up to 60m infrared range; true day/night (auto ICR)
- 3D digital noise reduction & true WDR (120dB)
- IVS analytics, including tripwire and intrusion
- Power via 12VDC or Power over Ethernet (802.3af)
- IP67 weather rated housing for outdoor use
- 1CH audio & 1CH alarm input/output (Dome only)
- IK10 vandal resistant metal housing (Dome only)



Motorised Bullets

VSIPP-4BIRMG
(4.0MP VF Bullet)

VSIPP8MPFBIRMD
(8.0MP VF Bullet)

Motorised Vandal Domes

VSIPP-4DIRMD
(4.0MP VF Dome)

VSIPP-8DIRMD
(8.0MP VF Dome)

Motorised Turret Domes

VSIPP-4DIRMG
(4.0MP VF Turret)

VSIPP-8DIRMG
(8.0MP VF Turret)



Pro 2.0MP Fixed IP Bullet

2.0MP@50fps, 3.6mm lens (87°), 60m IR, IVS, WDR, microSD, ePoE, alarm I/O, audio I/O, IP67/IK10

VSIP2MPFBMINIIR



Compact 4.0MP VF IP Dome

4.0MP@20fps, 2.8~12mm VF lens (94~33°), 30m IR, digital WDR, H.265, IP67, IK10, PoE

VSIPC-4DIRMD



Compact 4.0MP VF IP Turret

4.0MP@20fps, 2.8~12mm VF lens (94~33°), 50m IR, digital WDR, H.265, IP67, PoE

VSIPC-4DIRMG

Compact Series now in 4K.

The best price vs performance from Watchguard™ with 4.0MP & 8.0MP Compact Series IP surveillance kits.

IP Surveillance Kits Complete 4/8 Camera CCTV Solutions | Up to 4K / 8.0MP | Fixed Lens



Compact Series Fixed IP Cameras

- Stream up to 8.0MP (3840 x 2160) at 15fps
- 2.8mm fixed lens with wide 105° viewing angle
- 30m infrared range; true day/night (auto ICR)
- H.265 encoding for efficient storage & streaming
- 3D digital noise reduction & true WDR (120dB)
- Tripwire, Intrusion, Motion detection and more
- Power via 12VDC or Power over Ethernet (802.3af)
- IP67 metal housing, IK10 vandal resist (*Domes only*)



NEW
Fixed 4K
Models

VSIPC-4BIRS2 (4.0MP Bullet)
VSIPC-4DIRD2 (4.0MP Dome)

VSIPC-8BIRS (8.0MP Bullet)
VSIPC-8DIRD (8.0MP Dome)
VSIPC-8DIRG (8.0MP Turret)



Compact Series IP Surveillance Kits

- 4 or 8 channel kits with 4MP or 8MP 2.8mm fixed lens cameras
- Your choice of bullet/dome cameras; standard kits shown below
- SkyHawk Surveillance HDDs, IVS, true WDR, IP67 rated housing
- Includes patch cable & HDMI cable; camera data cable sold separately



4.0MP IP Surveillance Kits

- 1 x 4 or 8 Channel PoE NVR with 1 x HDD bay
- 1 x Installed 1TB (4CH) or 2TB (8CH) surveillance HDD
- 4/8 x 4.0MP 2.8mm (105°) domes or bullets (shown above)

NVRKIT-C441F
(4CH, 1TB HDD)

NVRKIT-C842F
(8CH, 2TB HDD)



8.0MP / 4K IP Surveillance Kits

- 1 x 4 or 8 Channel PoE NVR with 1 x HDD bay
- 1 x Installed 2TB (4CH) or 4TB (8CH) surveillance HDD
- 4/8 x 8.0MP 2.8mm (105°) domes, turrets or bullets (above)

NVRKIT-C482F
(4CH, 2TB HDD)

NVRKIT-C884F
(8CH, 4TB HDD)

Deliver excellent upgrades with deals on HDCVI surveillance.

» Wide range of coaxial surveillance solutions from 720p to 4K

HDCVI Digital Video Recorders Up to 8.0MP | Backwards & Cross Compatibility



Compact Series 8/16CH HDCVI DVRs

- Record up to 16 channels at 8.0MP (3840 x 2160) @ 7fps
- 1 x SATA ports up to 10TB, max. 10TB HDD capacity
- Supports HDCVI, HDTVI, AHD, Analogue and IP cameras
- Add 4 (CVR8COM) / 8 (CVR16COM) IP channels up to 8.0MP
- Up to 700m video transmission distance over coaxial cable
- H.265; remote view for iOS & Android devices

CVR8COM
(8CH, 8.0MP)

CVR16COM
(16CH, 8.0MP)



Professional 16/32CH HDCVI DVRs

- 16CH: Record up to 16CH at 8.0MP (3840 x 2160) @ 7fps; 2 x SATA ports up to 10TB, max. 20TB HDD capacity; add up to 8 additional IP inputs up to 8.0MP (96Mbps)
- 32CH: Record up to 32CH at 2.0MP (1920 x 1080) @ 15fps; 8 x SATA ports up to 10TB, max. 80TB HDD capacity; substitute coax inputs with IP inputs up 32CH (128Mbps)
- Supports HDCVI, HDTVI, AHD, Analogue and IP cameras
- H.265; remote view for iOS & Android devices

CVR16PRO3
(16CH, 8.0MP)

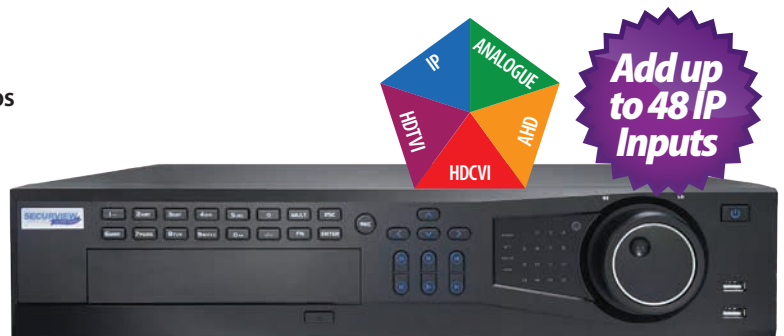
CVR32PRO3
(32CH, 2.0MP)



Ultimate Series 16CH HDCVI DVR

- Coax: Records 4.0MP (2560 x 1440) at 15fps, 1080p at 25fps
- IP: Add 48 additional IP channels up to 8.0MP resolution
- 8 x SATA ports up to 10TB, max. 80TB HDD capacity
- Supports HDCVI, HDTVI, AHD, Analogue and IP cameras
- Up to 700m video transmission over coaxial
- 2 x RJ-45 ports, 2 x HDMI (1 x up to 4K) & VGA video out
- Configure remote view in seconds via QR code

CVR16ULT
(16CH, 4.0MP)



Ultimate upgrade solutions.

Upgrade old analogue systems and achieve amazing 4K results with Securview 4K HDCVI CCTV systems.

HDCVI Surveillance Deals Up to 8.0MP | Save on Fixed & Motorised Lens HDCVI Cameras



Pro 8.0MP HDCVI Bullet

8.0MP@15fps, 2.8mm (111°), 40m IR, starlight, WDR, built-in mic, IP67, 12VDC, TVI/CVI/AHD

VSCVI-8BIRG



Pro 8.0MP HDCVI Turret

8.0MP@15fps, 2.8mm (111°), 50m IR, starlight, WDR, built-in mic, IP67, 12VDC, TVI/CVI/AHD

VSCVI-8DIRG



Pro 8.0MP VF HDCVI Bullet

8.0MP@15fps, 3.7~11mm (112~46°), 80m IR, starlight, WDR, mic, IP67, 12VDC, TVI/CVI/AHD

VSCVI-8BIRMG



Pro 8.0MP VF HDCVI Turret

8.0MP@15fps, 3.7~11mm (112~46°), 60m IR, starlight, WDR, mic, IP67, 12VDC, TVI/CVI/AHD

VSCVI-8DIRMG



8.0MP HDCVI CCTV Kits

- 8CH (4 cam) / 16CH (8 cam) kits for easy camera expansion
- 4K@7fps, Starlight, 2.8mm (111°), 50m IR, WDR, IP67, metal SkyHawk CCTV HDD & camera PSUs (cable sold separately)
- Mix & match fixed lens bullet or turret dome cameras

CVRKIT-C882F-4
(8CH + 4 CAMS)

CVRKIT-C1684F-8
(16CH + 8 CAMS)



**Mix & match
dome or bullet
cameras**



Power & Video Cable Accessories

4K video/power leads (chain up to 2 x 30m); camera PSUs

VIDPWR20RG59 (20m Power/BNC)
VIDPWR30RG59 (30m Power/BNC)
PS12VDC700-4 (4 camera PSU)



Ethernet over Coax Devices

Repurpose existing coaxial cable for use with IP CCTV systems, including Power over Ethernet

VSEOCPAIRV2 (Eth over Coax) VSEOC-ATX (Transmitter)
VSEOC-ARX (Receiver)



Passive HDCVI to CAT5E/6 Balun Pair

Minimise wiring costs by transmitting HDCVI / comp. video over CAT5E/6 cable instead of coax

VSBALHDP (HDCVI over UTP)

Build impressive video walls up to 9 displays & 144 channels.

» Showcase your 4K CCTV surveillance installs with our decoders

Display Accessories | Network Video Decoders | HDMI Splitters & Extenders



VIP Vision™ Network Video Decoders

- Network-roaming decoder displays all video feeds
- Video wall splicing for up to 36 channels per monitor
- Split screen control with zoom/merge/roam/overlay
- Switch between standard & high definition streams
- Support for audio, alarm, two-way talk, RS232, RS485
- Fisheye dewarp & multi-video split display
- Manage via web browser or VIP Vision™ SmartPSS
- **NVD-A4:** Decode 8CH 4K / 36CH 1080p / 144CH D1
- **NVD-A9:** Decode 12CH 4K / 48CH 1080p / 144CH D1

NVD-A4
(4 x HDMI Out)

NVD-A9
(9 x HDMI Out)



Huge Displays:
Up to 9x Any Size TV!



NEW

FLASHVIEW™ 2-way 4K Ultra HD HDMI Splitter

- 1 x HDMI input, 2 x HDMI output
- Supports up to 4K Ultra HD & 3D video
- Easy plug-and-play installation
- Includes 5VDC power supply

HDMI-SPL2P3
(HDMI Splitter)



NEW

FLASHVIEW™ HDMI Extender Over CAT6 (50m)

- Transmit HDMI signal over 50m via CAT6
- Supports up to Full HD 1080p & 3D video
- Up to 225MHz/2.5Gbps bandwidth
- Includes 2 x 5VDC 1A power supplies

HDMI-EXT50M
(HDMI over CAT6)



SECURVIEW Professional Display Brackets

- 13~30" 15kg Wall Mount **LCDBKT-A15T (Tilt)**
- 17~42" 20kg Wall Mount **LCDBKT-A20T (Tilt)**
- 17~42" 30kg Arm Wall Mount **LCDBKT-A30TS (Tilt & swivel)**
- 23~42" 35kg Ceiling Mount **LCDBKT-A35C (Tilt & swivel)**
- 37~70" 50kg Large Wall Mount **LCDBKT-A50T (Tilt)**

Built for 24/7 operation.

Flashview™ monitors feature LCD panels designed for continuous use in CCTV systems, now in 21.5 size".

NEW



These Flashview™ monitors come with **Lifetime Warranty†** and **12VDC power input** for easy installations.

FLASHVIEW™



18.5" LCD Monitor

- 720p (1366x768), 5ms
- Horizontal display inputs
- 1 x VGA input
- VESA 100x100 mount

LCDFL19
(720p, 18.5")



21.5" LCD Monitor

- 1080p (1920x1080), 5ms
- Horizontal display inputs
- 1 x HDMI, 1 x VGA
- VESA 100x100 mount

LCDFL22
(1080p, 22")



23.7" LCD Monitor

- 1080p (1920x1080), 14ms
- Vertical display inputs
- 1 x HDMI, 1 x VGA
- VESA 100x100 mount

LCDFL24V
(1080p, 23.8")



27" LCD IPS Monitor

- 4K (3840 x 2160), 5ms
- Vertical display inputs
- 2 x HDMI, 1 x DisplayPort
- VESA 75x75 mount

LCDFL27
(4K, 27")

†Flashview monitor limited lifetime warranty warrants the original end user of the product with proof of purchase. - For full warranty terms, please visit www.rhinoco.com.au/legal/terms

Prevent surveillance footage loss.

Deliver peace of mind and add value by adding a Socomec Uninterruptible Power Supply to your installations.



NETYS PE Series UPS - 650VA to 2000VA (Step Wave)

- Connect devices easily via multiple Australian standard sockets
- AVR stabilises output voltage, avoid needless switching to battery mode
- Integrated RJ45 protection against line overvoltage for LAN/ADSL
- **UPS650VA:** 650VA/360W, 2 sockets, LED indicators, ~28min@72W
- **UPS850VA:** 850VA/480W, 2 sockets, LED indicators, ~26min@95W
- **UPS1000VA:** 1000VA/600W, 4 sockets, LCD info display, ~44min@120W
- **UPS1500VA:** 1500VA/900W, 4 sockets, LCD info display, ~32min@180W
- **UPS2000VA:** 2000VA/1200W, 4 sockets, LCD info display, ~24min@240W

UPS650VA UPS850VA UPS1000VA UPS1500VA UPS2000VA



NETYS PR Series UPS - 1000VA to 2000VA (Sine Wave)

- Pure sine waveform for greater stability and system compatibility
- Connect devices easily via IEC320 sockets (appliance couplers)
- AVR stabilises output voltage, avoid needless switching to battery mode
- Integrated RJ45 protection against line overvoltage for LAN/ADSL
- **UPS1000VA:** 1000VA/700W, 4 sockets, LCD info display, ~44min@120W
- **UPS1500VA:** 1500VA/1050W, 6 sockets, LCD info display, ~32min@180W
- **UPS2000VA:** 2000VA/1400W, 6 sockets, LCD info display, ~24min@240W

UPS1000VA-S UPS1500VA-S UPS2000VA-S



NETYS PR Series UPS - 1700VA to 3300VA (Sine Wave)

- Professional functions & appearance, easy rackmount or tower use (2U)
- Connect devices via IEC320 standard sockets (up to 8 x 10A, 1 x 16A)
- Battery hot-swap whilst in operation, load segmentation, 0.9 power factor
- Integrated RJ45 protection against line overvoltage for LAN/ADSL
- **UPS1700VAXCRM:** 1700VA/1350W, 8 sockets, LCD info display, ~30min@270W
- **UPS2200VAXCRM:** 2200VA/1800W, 8 sockets, LCD info display, ~47min@360W
- **UPS3300VAXCRM:** 3300VA/2700W, 9 sockets, LCD info display, ~31min@540W

UPS1700VAXCRM UPS2200VAXCRM UPS3300VAXCRM

Compact install protection.

New Socomec Compact UPS fits into 450mm deep rackmount cabinets for a fantastic installation result.



**Standalone mount or
450mm 2U rackmount**

1100VA Rackmount Line Interactive Tower UPS

- Only 330mm depth UPS for installation in 19" 450mm deep cabinets
- LCD screen with status indication (load / alarm / fault / capacity, etc.)
- Pure sine waveform for greater stability and system compatibility
- 1100VA/900W battery capacity, 230VAC rated input voltage
- Integrated RJ45 protection against line overvoltage for LAN/ADSL
- Connect devices via 6 x IEC320 standard sockets (10A)
- AVR stabilises output voltage, avoid needless switching to battery mode
- Load segmentation function to prioritize loads and manage critical situations
- USB port & HID protocol as standard for direct interfacing with Windows PCs
- RS232 for management of power supply and local/remote shutdown

UPS1100VA-ORM

**Store the NVR, network switch &
UPS in one compact cabinet**



SECURVIEW™

450mm Wall Rackmount Cabinets

- 4U to 18U, 450mm depth
- Tempered glass & steel, lockable doors
- Removable side doors for easy setup
- Flatpacked, assembly required

RMC-B4U450W2 (4U)

RMC-B6U450W2 (6U)

RMC-B12U450W2 (12U)

RMC-B18U450W2 (18U)

Scalable IP intercom systems, fit for homes to apartments.

» Ideal for single & multi-tenant building applications

Residential Intercom Series IP & 2-Wire Models | Door Stations | Room Stations

NEW



1.0MP Residential IP Door Station

- 1/2.8" 1.0MP fixed lens camera (122°)
- 2-way talk, access via NFC card reader
- 12VDC / PoE with 12VDC power output for strike
- Alarm I/O, RS485 I/O and tamper detection
- Polycarbonate construction, surface mount

INTIPRDSJ
(1.0MP)



2.0MP Residential IP Door Station

- 1/2.8" 2.0MP ultra-wide angle camera (160°)
- Omni-directional microphone for 2-way talk
- 12VDC / PoE with 12VDC power output for strike
- Alarm I/O, RS485 I/O, tamper detection
- Aluminium construction, flush/surface box

INTIPRDSG
(2.0MP)

INTIPRDSGFB (Flush Box)
INTIPRDSGSB (Surface Box)

NEW



2.0MP Residential IP Outdoor Station

- 1/2.8" 2.0MP ultra-wide angle camera (158°)
- 2-way talk, mechanical keypad & NFC reader
- 12VDC / PoE with 12VDC power output for strike
- Alarm I/O, RS485 I/O and tamper detection
- Aluminium construction, flush/surface box

INTIPRDSO
(2.0MP)

INTIPADSDFB (Flush Box)
INTIPADSDSB (Surface Box)

27% OFF



Residential & Apartment IP Monitor

- 7" TFT capacitive touchscreen (800 x 480 pixels)
- Add microSD card for up to 32GB storage
- Record / snapshot video calls/messages; DND
- INTIPMONPOE: PoE switch for apartments for monitor PoE power; connect up to 6 monitors

INTIPMON
(White)
INTIPMONPOE (PoE Switch)

NEW



Residential IP PoE Indoor Monitors

- New 10" touchscreen (1024 x 600 pixels) model
- 7" TFT capacitive touchscreen (1024 x 600 pixels)
- 8GB internal storage; add microSD up to 32GB
- Record / snapshot video calls/messages; DND
- Power via PoE or 12VDC; avail. in black or white

INTIPMONGB (7" Black)
INTIPMONGW (7" White)
INTIPMONGBL (10" Black)



Residential IP PoE Handset Monitors

- 7" TFT capacitive touchscreen (1024 x 600 pixels)
- Wall-mounted design with built-in handset
- Record and snapshot video calls/messages
- Prevent unwanted calls with Do Not Disturb
- Power via PoE or 12VDC; avail. in black or white

INTIPMONDBH2 (Black)
INTIPMONDWH (White)
INTIPMONDH-B (Desktop Bkt)

Complete intercom kits.

Single-residence intercom installations simplified with pre-configured VIP Vision Intercom Kits.



J Series Residential IP Intercom Kit

- 1 x Residential IP intercom door station with built-in NFC access card reader & PoE
- 1 x 7" touchscreen indoor monitor (black)
- 1 x 5-port 10/100M PoE switch with incl. PSU

INTIPRKITJ
(Complete Kit)



G Series Residential IP Intercom Kit

- 1 x Residential IP intercom PoE door station
- 1 x 7" touchscreen indoor monitor (white)
- 1 x 5-port 10/100M PoE switch & PSU
- 1 x Surface mount box for door station

INTIPRKITG
(Complete Kit)

INTIPRDSGSB (Surface Box included)
INTIPRDSGFB (Flush Box, optional)



2-Wire Residential Intercom Kit

Upgrade existing intercoms using same cabling.

- 2.0MP residential door station (box sold sep.)
- Surface mount 7" touchscreen indoor monitor
- Optional 2-wire network switch to enable remote view functions & provide power to 6 monitors

INTIPRDSG (Door Station)
INTIPRDSGFB/SB (Flush/Surface)
INTIPMON2W (7" Monitor)
INTIPPOE2W (2-Wire Switch)

Large access control installs made simple with VIP Vision.

» Remove cost & complexity with access control built for business

Access Controllers Control up to 2000 Doors | Free PC Management Software



Professional & Compact IP Access Controllers

- Quick-install, affordable access control in small to medium enterprise
- Available in 2-door 2-way, 4-door 1 & 2-way & 8-door 1-way controllers
- Access management & CCTV integration via free Smart PSS software
- Cascade up to 255 slave controllers for over 2000 total door capacity
- Configure users/roles & departments; up to 100,000 cards & 150,000 records
- Anti-passback, multi-door unlock, multi-card open, door time-out & more
- **ACCON-2C41:** Compact plastic body, 4 x readers, 9/5 input/output, 9~15VDC
- **ACCON-2P22:** Pro metal body, 4 x readers, 8/4 input/output, 240VAC
- **ACCON-2P41:** Pro metal body, 4 x readers, 9/5 input/output, 240VAC
- **ACCON-2P42 & 2P81:** Pro metal body, 8 x readers, 20/12 input/output, 240VAC

ACCON-2C41
(Com, 4-door 1-way)

ACCON-2P22
(Pro, 2-door 2-way)

ACCON-2P41
(Pro, 4-door 1-way)

ACCON-2P42 / 2P81
(Pro, 4-door 2-way)
(Pro, 8-door 1-way)

Access Readers 13.56MHz RFID | Keypad & Fingerprint | Cable



13.56MHz Access Control Readers

Professional card, keypad & fingerprint access readers, LED indicators & backlit buttons, tamper protection

ACRDR-2PC: Card reader, IP67 rated, 9~15VDC

ACRDR-2LKC: Large card reader & touch keypad, IP55 rated, 9~15VDC

ACRDR-2MKC: Metal-body card reader & keypad, IP55/IK08, hard buttons, 9~15VDC

ACRDR-2SC: Slim card reader, IP65 rated, 5~16VDC

ACRDR-2SKC: Slim card reader & touch keypad, IP65 rated, 5~16VDC

ACRDR-2SFC: Slim card reader & fingerprint reader (up to 3000 records), IP55 rated, 9~15VDC

ACRDR-2PC

ACRDR-2LKC

ACRDR-2MKC

ACRDR-2SC

ACRDR-2SKC

ACRDR-2SFC



200m Access Control Cables

- Designed for access control systems
- **AC200G:** 200m 6-core shielded, tinned copper access control cable
- **APAC200G:** 200m 1 x 6-core access control cable, 1 x 4-core & 6-core alarm cable, 1 x figure 8 power cable

AC200G
(Access only)

APAC200G
(Composite)



Gigabit Ethernet Switches

- Available in 5, 8, 16 & 24 port modules
- 10 / 100 / 1000Mbps Gigabit Base-T ports
- Unmanaged switches for easy plug & play
- LED indicators for status & transfer display
- Professional full metal enclosure
- Desktop / SOHO switches (5 & 8 port)
- Rackmount tabs included (16 & 24 port)
- Overvoltage protection up to 4kV



VSETH-SW5G (5 port, 5VDC) **VSETH-SW8G** (8 port, 9VDC) **VSETH-SW16G** (16 port, 240VAC) **VSETH-SW24G** (24 port, 240VAC)



9 Port DIN Rail Gigabit Ethernet Switch

- 5 x 1000Mbps Base-T ports
- 4 x 1000Mbps Base-X SFP ports
- 4kV overvoltage protection
- DIN rail; metal housing
- Unmanaged switch

VSETH-SW9GF
(9 port, 9~57VDC)

SFPMM1 (LC, MMF Mini GBIC)
SFPSM1 (LC, SMF Mini GBIC)



4 Port Hi-PoE Desktop Switch

- 4 x 100Mbps Base-T device ports
- 1 x 100Mbps Base-T uplink ports
- 30W per port + 1 x 60W Hi-PoE port
- Total PoE power load up to 60W

VSPOE-SWA4
(Unmanaged)



8 Port Hi-PoE Desktop Switch

- 8 x 100Mbps Base-T device ports
- 2 x 1000Mbps Base-T uplink ports
- 30W per port + 1 x 60W Hi-PoE port
- Total PoE power load up to 96W

VSPOE-SWA8G
(Unmanaged)



30W PoE Injector

30W PoE+, 1000Mbps, 240VAC

VSPOE-IN30
(Injector)



Rackmount Fast Hi-PoE Managed Switches

- Fast 100Mbps PoE+ Base-T device ports
- Gigabit 1000Mbps Base-T & SFP Base-X uplink ports
- L2 Managed switch for security & switch customisation
- 30W per port with 2 x 60W orange Hi-PoE ports
- Total PoE load: 240W (SWA16), 360W (SWA24)
- Rackmount tabs for cabinet mounting

VSPOE-SWA16
(16 port, L2 managed)

VSPOE-SWA24
(24 port, L2 managed)



4 & 8 Port PoE+ DIN Rail Ethernet Switches

- 1x 1000Mbps Base-T uplink port
- 1x 1000Mbps Base-X SFP uplink port
- Unmanaged switch plug & play
- 30W/port & HiPoE 60W (orange ports)
- Total load 60W (4 port), 96W (8 port)

VSPOE-SW4H
(4 port, 60W)

VSPOE-SW8H
(8 port, 96W)

Professional Cabling Electrical Cable | CAT5E & CAT6 UTP Cable



SECURVIEW

100m TPS Cable Drums

SDI Cable

TPS-15SD100 (1.5mm²)

TPS-25SD100 (2.5mm²)

Twin Active Flat TPS Cable

TPS-15TA100 (1.5mm²)

TPS-25TA100 (2.5mm²)

Twin Earth Flat TPS Cable

TPS-15TE100 (1.5mm²)

TPS-25TE100 (2.5mm²)



SECURVIEW

305m CAT5E/6 UTP Pullboxes

CAT5BLU-47MM (Blue)

CAT5EYL-47MM (Yellow)

CAT5EWH (White)

CAT6BLU-50MM (Blue)

CAT6RED-50MM (Red)

Patch Leads

NETCABLE10 (10m)

NETCABLE20 (20m)

NETCABLE30 (30m)

Professional & scalable security with the Watchguard™ 864.

» Deliver professional results with Watchguard security solutions

Professional Hardwired Security 8-64 Zone Panel | Professional Accessories



Watchguard 864 Alarm Systems

Professional 8/64 Zone Panel & Keypad + IP Module

- 8 zone panel & keypad, expandable up to 64 zones
- 8 partitions, up to 5 programmable outputs
- Expandable up to 25 outputs with modules
- 3 quick arm modes: Away / Stay (with & w/o delay)
- Dedicated panic zone & monitored siren output
- Easily programmable via windows PC (module sold separately)
- HYYIP IP module for complete phone control; connect panel to the Internet via hardwired or WiFi network connection; arm/disarm, bypass, trigger outputs & configure notifications

WGAP864PB (Panel + black KP)

WGAP864PW (Panel + white KP)

WGAP864IPMW (WiFi/IP Module)



WiFi Support



TAKEX

Wide Angle & Curtain PIR Sensors

- Passive infrared detection up to 11m (84° angle)
- Pet immune model - ignores animals up to 20kg
- Curtain model - emits vertical beam up to 16.5m
- High stability against interference (radio, static, etc.)
- Tamper switch, ABS plastic housing for indoor use
- Wall/ceiling mount bracket avail. (sold separately)

PIR-T45WP
(Pet immune)

PIR-T46C
(Curtain)

PIR-T4BKT
(Bracket)



Avail. In 3 Colours



Professional Hardwired Reed Switches

- In Indoor / heavy duty NC reed switch output
- Each model available in white, grey or brown
- **RSW-M Series:** Heavy duty, up to 50mm gap, 10W contact rating, 250mm leads, zinc alloy
- **RSW-P Series:** Indoors, up to 19mm gap, 3W contact rating, plastic, 65.5 x 11.1mm footprint

RSW-M1 / -M1W / -M1B
(Grey / White / Brown)

RSW-P1 / -P1G / -P1B
(White / Grey / Brown)

120dB Sirens



Hardwired Siren/Strobe + Backup

- Polycarbonate sirens for 864 & other panels
- High power siren (up to 120dB) & blue strobe
- 7.2V 500mA NiMH (-500), 12V 1.2A NiMH (-900)
- Siren timers: 3 or 20min (-500), 3 or 6min (-900)
- For sheltered use IP54 (-900), IP55 (-500)
- Front case & wall tamper switches

WGSIR-500
(Square)

WGSIR-900
(Round)

Keep cool this summer.

Beat the heat this summer with Gree Air Conditioning, the world's largest residential air-con manufacturer.

**6 Year
Warranty**



Inverter WiFi Air Conditioner Systems

- Manufacturer 6-year parts and labour warranty
- Full inverter air con systems with indoor & outdoor unit
- Control over WiFi via free iPhone / Android app
- Ideal for homes, offices & small businesses
- Up to 7.1kW cooling & heating capacity
- Strong air flow volume up to 361L/sec
- LED display shows status & temperature
- Includes remote control
- Control over WiFi via smartphone app

*Indoor & outdoor units sold together as complete system

2.5kW Air-Con System

2.5kW cooling capacity
3kW heating capacity
175L/sec air flow volume

AC4200-I + AC4200-O

5.2kW Air-Con System

5.2kW cooling capacity
5.6kW heating capacity
236L/sec air flow volume

AC4204-I + AC4204-O

7.1kW Inverter Air-Con System

7.1kW cooling capacity
7.1kW heating capacity
361L/sec air flow volume

AC4206-I + AC4206-O

Solar power systems for CCTV, lighting, WiFi, access and more.

» Four mini solar power stations customised to fit your job needs

Solar Powered Systems 56W - 180W Solar Panels | 218Wh - 1200Wh Lithium Battery

ENSA™

Create Solar Powered Systems

- Solar systems to power your next installation
- Pre-configured & ready for implementation
- Use for lighting, CCTV, WiFi, access & more
- High conversion rate monocrystalline panels
- Large capacity lithium batteries (LiFePO₄)
- Fully adjustable LED lighting modules
- 180lm/W with microwave motion sensor
- Set parameters with included remote
- 12.8V and 25.6VDC input voltage
- Optional bird spike strip included
- Ø50~60mm diameter pole mount

*Pole/base not included with SSL-B units, sold separately



56W Solar System

56W Monocrystalline Panel
218Wh LiFePO₄ Battery
20W 180lm/W LED Area Light
145 x 75° Beam Angle
12.8VDC Output Voltage

SSL-B20MC



80W Solar System

80W Monocrystalline Panel
320Wh LiFePO₄ Battery
30W 180lm/W LED Area Light
145 x 75° Beam Angle
12.8VDC Output Voltage

SSL-B30MC



120W Solar System

120W Monocrystalline Panel
500Wh LiFePO₄ Battery
50W 180lm/W LED Area Light
145 x 100° Beam Angle
12.8VDC Output Voltage

SSL-B50MC



180W Solar System

180W Monocrystalline Panel
1200Wh LiFePO₄ Battery
60W 180lm/W LED Area Light
145 x 100° Beam Angle
25.6VDC Output Voltage

SSL-B60MC

**Install
Solar CCTV
Systems**



The ultimate worksite solar CCTV solution.

Deliver 24/7 site protection with VIP Vision™ 4G solar surveillance solutions with 4G, AI PTZ and timelapse functions. Now with new pole and base.



Solar Powered Surveillance

- 120W & 180W Solar Systems + AI surveillance
- Fully configured and ready for installation
- Remote view via 4G* or 5GHz wireless links
- 4.0MP IR PTZ included, other options available*
- Surveillance grade microSD storage included
- 500Wh or 1200Wh high capacity batteries

*SIM sold separately, camera changes may increase cost. Built pole & base delivery dependent on area, contact your sales rep for details.

SLR-B120-4G/4W (120W Panel, 4G/WiFi)
SLR-B180-4G/4W (180W Panel, 4G/WiFi)



Hinged Pole & Concrete Base Kits

- **Pole:** 4.5m tall hinged galvanised pole, no need for ladder or for working at heights
- **Base:** Heavy duty base 500kg, reinforced for extra strength, available assembled or unassembled

SLR-POL4.5H (4.5m hinged pole)
SLR-POLBASE (Unassembled)
SLR-POLCONC (Assembled Base)



High performance lighting for commercial & industrial installs.

» Wide range of high power LED flood & street lighting up to 960W

LED Lighting Up to 960W | High-efficiency | Flood Lights | Street Lights

ENSA™

LSL-B Series: LED Area/Street Lights

- **Now with built in photocell for dusk/dawn switching**
- Available in 150W and 200W models
- Versatile mounting with 5 adjustable light brackets
- Slip fit, fixed/adjust pole, trunnion & yoke wall mounts
- 135lm/W, 5000K cool white, >70 CRI, 50,000hrs lifespan
- 155 x 85° beam angle, 1~10V / PWM dimmable
- IP66/IK08 weather/vandal rated, 20KV surge protection
- Brackets not included, sold separately



Standard Models

LSL-B150-C
(150W, 5000K)

LSL-B200-C
(200W, 5000K)

Photocell Models

LSL-B150-CP
(150W, 5000K)

LSL-B200-CP
(200W, 5000K)

ENSA™

LFL-G2 Series: Adjustable LED Floods

- Available in 240W, 360W, 480W, 720W & 960W models
- Superb 160lm/W luminous efficacy, >80 CRI
- 180° adjustable U-bracket to direct entire luminaire
- Incredible 100,000hrs rated LED lifespan
- 5000K cool white colour temperature
- New wide 60°x100° beam angle models (30° optional)
- IP67 weather rated; ideal for sporting grounds



LFL-G240-C2
(240W 38,400lm,
2 x LED modules)

LFL-G360-C2
(360W 57,600lm,
3 x LED modules)

LFL-G480-C2
(480W 81,600lm,
4 x LED modules)

LFL-G720-C2
(720W 115,200lm,
6 x LED modules)

LFL-G960-C2
(960W 153,600lm,
9 x LED modules)

High power, high flexibility.

Install large lighting jobs with precision with highly adjustable LFL-F Series Flood Lighting from ENSA™.

Lens beam options to fit your installation needs



ENSA™

LFL-F Series: High Power LED Floods

- Available in 480W, 720W and 960W models
- Lumileds LEDs exceptional light output (+165lm/W)
- 60° beam angle, >80 CRI, 6500K cool white, IP66
- Customise lighting for large areas perfectly with 360° rotate & 140° tilt individually adjustable LED modules
- **Ask us about lighting simulation & project assistance**

LFL-F480-C
(480W 79,200lm,
4LED modules)

LFL-F720-C
(720W 118,800lm,
6LED modules)

LFL-F960-C
(960W 158,400lm,
8LED modules)



LHB-F Series Lens Modules

- LFL-F-L10 (10° lens)
- LFL-F-L30 (30° lens)
- LFL-F-L60 (60° lens)

Automate lighting, add security and improve energy efficiency.

» Intelligent lights & sensors to boost the value of your installation

Intelligent Lighting Sensor Floods | Oyster Lights | Sensor Switches

ENSA™

LFL-C2 Series: Commercial Sensor Flood Lights

- Available in 20W, 30W and 50W models
- 120lm/W luminous efficacy, 120° beam, >80 CRI
- Adjustable PIR detection up to 12m with a 140° arc and adjustable on-time delay (5s ~ 5min)
- 35,000hrs rated LED lifespan
- 5000K cool white colour temperature
- 180° adjustable U-bracket & PIR sensor
- IP65 weather rated chassis

LFL-C20-CS2-5
(20W, 2400lm)

LFL-C30-CS2-5
(30W, 3600lm)

LFL-C50-CS2-5
(30W, 6000lm)



Remote control any 240VAC load.



ENSA™

2CH Mains Voltage 433.92MHz Receiver

- Remote control any 240VAC load up to 1000W
- 2 relay outputs (latched/timed), 100m RF range LoS
- Trigger via wireless alarm sensors, eg: PIR/reed switch*
- Add up to 128 remotes or wireless alarm sensors
- IP55 weather/dust rated, sheltered mounting
- Includes 2 wireless remotes

ENSA-RS1
*sensors sold separately

ENSA™

16W LED Oyster Lighting

Available in standard, sensor & sensor+battery backup models, 1200lm, 120° beam, 30,000hrs lifespan, 3000K/5000K, IP66/IK10 weather/vandal rated

LOL-A16-W/C
(Standard)

LOL-A16-WS/CS2
(Standard)

LOL-A16-WSE/CSE
(Sensor & Battery)

ENSA™ Intelligent Motion Sensor & Dusk/Dawn Switches



- 12m 180°
- Wall mount
- PIR detection
- IP65 rated
- 4m x 20m
- Corridors
- PIR detection
- IP20 rated
- Ø6m 360°
- Recessed
- PIR detection
- IP20 rated
- Ø20m 360°
- Ceiling mount
- PIR detection
- IP65 rated

ENSA-PS1

ENSA-PS2

ENSA-PS3

ENSA-PS4

- Ø8m 360°
- Concealed
- Microwave
- Indoor only
- 15m 180°
- Wall mount
- Microwave
- IP65 rated
- Ø16m 360°
- Ceiling mount
- Microwave
- IP20 rated

ENSA-MS1

ENSA-MS6

ENSA-MS2

- 2 ~ 100 Lux
- DIN rail/probe
- Dusk/dawn
- IP65 rated
- 5 ~ 50 Lux
- Wall clip
- Dusk/dawn
- IP65 rated

ENSA-LC3

ENSA-LC1W

Best in slimline LED floods.

Deliver incredible results with the LFL-B2 Series of LED flood lights with superior light output up to 150lm/W.

20W, 30W and 50W now available in Warm White



ENSA™

LFL-B2 Series: Professional LED Floods

- Available in 20W, 30W, 50W, 80W, 100W, 150W & 200W
- Superb 150lm/W luminous efficacy, >70 CRI
- 180° adjustable U-bracket to direct entire luminaire
- Outstanding 50,000hrs rated LED lifespan
- 3000K/5000K warm/cool white colour temperature
- Wide 120° beam angle, circular light distribution
- IP65 weather rated for outdoors installations
- Built with reliable Lumiled LEDs, 5 year warranty

LFL-B20-W2 (20W, 3000K)
LFL-B20-C2 (20W, 5000K)

LFL-B30-W2 (30W, 3000K)
LFL-B30-C2 (30W, 5000K)

LFL-B50-W2 (50W, 3000K)
LFL-B50-C2 (50W, 5000K)

LFL-B80-C2 (80W, 12000lm, 5000K) LFL-B100-C2 (100W, 15000lm, 5000K)

LFL-B150-C2 (150W, 22000lm, 5000K) LFL-B200-C2 (200W, 30000lm, 5000K)

Amazing value with AVOL™ for everyday lighting installations.

» Create high value installations with new AVOL™ LED lighting

LED Lighting Up to 200W | High-efficiency | Flood Lighting | High Bays | Street Lighting



LFL-H Series: Driver-on-Board LED Flood Lighting

- 80lm/W luminous efficacy, 6000K cool white colour temp.
- Wide 120° beam angle, 35,000hr rated lifespan
- Lightweight aluminium, adjustable U-bracket, IP66 rated
- Integrated, on-board LED driver for streamlined installation

LFL-H50-C
(50W)

LFL-H150-C
(150W)

LFL-H100-C
(100W)

LFL-H200-C
(200W)

LFL-H50-CS
(50W + Sensor)



LHB-E Series: LED High Bay Lighting

- Available in 100W, 150W and 200W models
- 100lm/W luminous efficacy, 6000K cool white colour temp.
- 90° beam angle, 35,000hr rated lifespan, IP65 rated
- Lightweight aluminium, includes mounting eyelet
- Integrated, on-board LED driver for streamlined installation

LHB-E100-C
(100W 10,000lm)

LHB-E150-C
(150W 15,000lm)

LHB-E200-C
(200W 20,000lm)



LSL-C Series: LED Street Lighting

- Available in 50W, 100W, 150W and 200W models
- 110lm/W luminous efficacy, 6000K cool white colour temp.
- 90° x 130° beam angle, 35,000hr rated lifespan, IP65 rated
- Lightweight aluminium, Ø54mm (50W) / Ø62.1mm pole slip-fit
- Integrated, on-board LED driver for streamlined installation

LSL-C50-C
(50W 5,500lm)

LSL-C100-C
(100W 11,000lm)

LSL-C150-C
(150W 16,500lm)

LSL-C200-C
(200W 22,000lm)



Performance LED high bays.

See the latest additions to the LHB-D Series of high performance, high affordability LED high bay lights.



ENSA™

LHB-D Series: UFO High Bays

- Light-weight high bays in 100W, 150W & 200W
- 130lm/W luminous efficacy, >80 CRI
- 50,000hrs rated LED life, compact body, IP66
- 5700K cool white, 90° beam angle
- Other beam angle lenses optional

LHB-D100-C
(100W)

LHB-D150-C
(150W)

LHB-D200-C
(200W)



ENSA™

LHB-F Series: Food Grade High Bays

- Available in 100W, 150W or 200W models
- 135lm/W luminous efficacy, >80 CRI
- IP69K rated for pressure cleaning, 54,000hrs
- 4000K / 5700K natural/cool white, 120° beam
- Separate output lead for 0~10V light control

LHB-F100-C/N
(100W)

LHB-F150-C/N
(150W)

LHB-F200-C/N
(200W)



ENSA™

LHB-A Series: Traditional High Bays

- **Special price available while stocks last!**
- In 120W in standard or 0~10V driver*
- Accepted for use in the NSW ESS
- +100lm/W, >80 CRI, 50,000hrs rated LED life
- 6500K cool white, 60° reflector, IP20 rated
- Mounting eyelet included
- * 0~10V driver model sold separately

LHB-A120-C
(120W)

Efficient lighting solutions for commercial installations.

» New LED panel lighting, sensor battens and retrofit range

LED Panel Lights 300 x 1200mm | Tube Troffer Retrofits

ENSA™

LPL-C Series: LED Panel Light

- Stylish 9mm thick light with modern minimalist design
- Perfect in offices, schools, retail, conference rooms & more
- Available in 40W with high 120lm/W luminous efficacy
- 4800K cool white, >80 CRI, 110° beam angle, IP20 rated
- 300 x 1200mm standard ceiling tiles hole cut size
- Brackets not included, sold separately

LPL-C40-C
(40W, 4800K)



LED Sensor Battens 600/1200mm | Motion Sensing | Light Sensing | Emergency



ENSA™

S Series: IP65 LED Sensor Battens

- In 18W (1350lm) & 36W (3240lm) models
- Light & microwave motion sensor control light
- Set on-time duration & motion sensitivity
- On/off mode only (100% -> 0% brightness)
- 140° beam, 50,000hrs LED lifespan, IP65

LEDBT18WS
(18W, 600mm)

LEDBT36WS
(36W, 1200mm)



ENSA™

S2 Series: IP65 LED Sensor Battens

- Accepted for use in NSW Energy Saving Scheme
- In 18W (1600lm) & 36W (3000lm) models
- Light & microwave motion sensor control light
- Adjustable 2 stage dim (100% -> Dim -> Off)
- 120° beam angle, 35,000hrs LED lifespan, IP65

LEDBT18WS2
(18W, 600mm)

LEDBT36WS2
(36W, 1200mm)



ENSA™

SE Series: Emergency LED Battens

- Accepted for use in NSW Energy Saving Scheme
- In 18W (1600lm) & 36W (3000lm) models
- Light & microwave motion sensor control light
- 2hrs up-time backup battery, AS2293.3 app.
- 120° beam angle, 35,000hrs LED lifespan, IP65

LEDBT18WSE
(18W, 600mm)

LEDBT36WSE
(36W, 1200mm)

LED upgrades in a flash.

Energy efficiency made easy - upgrade HID lamps with the latest ENSA™ E27 and E40 screw fit bulbs.

**HUGE
SAVINGS**



ENSA™

100W & 160W E40 High Bay Bulbs

- 100W and 160W E40 screw-fit LED bulbs
- Up to 125lm/W, >80 CRI, >25,000hrs rated LED lifespan, 4000K natural & 6500K cool white
- LBL-D100RF: Reflector available for 100W

LBL-D100-E40C/N
(100W, cool/natural)

LBL-D160-E40C/N
(160W, cool/natural)



ENSA™

42W E27 & E40 Retrofit Bulbs

- 42W E27 and E40 screw-fit LED bulbs
- Up to 120lm/W, >80 CRI, >25,000hrs rated LED lifespan, 4000K natural white
- Ø110mm x 275mm length

LBL-D42-E27N
(42W, natural, E27)

LBL-D42-E40N
(42W, natural, E40)



ENSA™

45W E27 Retrofit Bulbs

- 45W E27 screw fit LED bulbs
- Up to 100lm/W, >80 CRI, >25,000hrs rated LED lifespan, 4000K natural white
- Ø138mm x 231mm length

LBL-D45-E27N
(45W, natural, E27)

E27-E40BASE
(E27 to E40 Adapter)

WiFi & 4G made for surveillance.

Pre-configured wireless links to save you on install time.

LONGEVITY

Pre-Configured 5.8GHz Wireless AP Bridges

- Point-to-point & point-to-multipoint applications
- We program units for plug & play, saving you time
- 5.8GHz wireless access point, 900Mbps transfer speeds
- Up to 5km point-to-point range, line of sight (H:60° / V:30°)
- PoE; pole & wall mount kits included; IP65 weather resistant

LGAP300
(Single Unit)

LGAP300-PACKA
(2 x Wireless APs)

LGAP300-PACKB
(3 x Wireless APs)

Point to Multi Point



LONGEVITY

2.4/5.8GHz Wireless AP

- Build & extend WiFi access
- Dual antennas 2.4/5.8GHz
- Up to 1300Mbps transfer rate
- PoE; IP65 for outdoor use

LGAP200
(1300Mbps)

LONGEVITY

4G LTE Wireless Access Point

- 4G LTE transfer to wired & WiFi network
- Functions as a router/access point
- 2 x 2.4GHz & 1 x 4GHz antennas
- Power micro-USB or PoE; IP65 rated

LGAP100-4G
(300Mbps, 4G)



Simple config via DIP switches: no PC required for basic setup.

LONGEVITY

DIP Switch 5.8GHz Wireless AP

- DIP switch config - no PC for basic setup
- 2 x 10/100/1000Mbps LAN ports
- Maximum 867Mbps wireless link speed
- Up to 2km max range line of sight
- PoE injector or switch required

LONGEVITYCOM007
(Single unit)

*SIM card not included

It is our mission to support & inspire your installation business.

With the best brands in CCTV, alarms, access control and LED lighting.



Over 40 Years | Since 1978

M/L: 407530935

Contact us, shop online or visit our Sydney branches:

(02) 9671 6711 | sales@rhino.com.au | www.rhino.com.au

McGraths Hill

Head Office & Distribution
9 Hannabus Place
McGraths Hill, NSW 2756

Haberfield

Showroom & Sales Office
223-225 Ramsay Street
Haberfield, NSW 2045

Villawood

Showroom & Sales Office
63-69 Middleton Road
Villawood, NSW 2163

Exclusive Trade Only Specials. Offers valid until 28th Feb 2021, while stocks last, trade customers only. Pricing & product availability may be subject to change without notice; all prices in AUD & exclude GST. Some offers may commence or extend beyond the promotional period. Errors & omissions excepted.