

# Camera & security light in one.

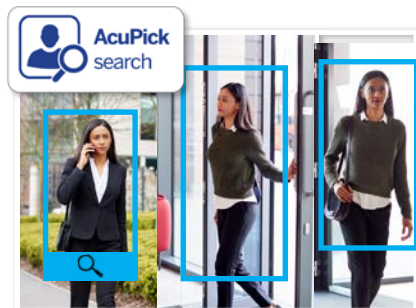
## Professional AI Series: Fixed lens AI turret dome camera in 8.0MP

The Professional AI CCTV cameras I3 range combines the latest in AI surveillance and a security light into one housing. During AI people and vehicle detection events, the camera will trigger a warm LED light to deter intruders and capture footage in full colour. Quickly search and track people & vehicles throughout entire sites across all Acupick CCTV cameras in your security system.

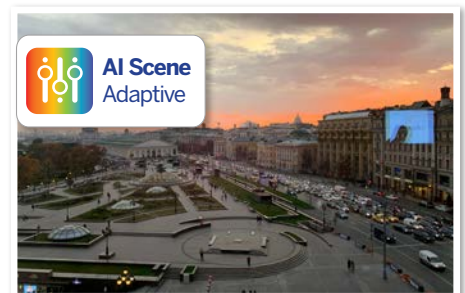
- Stream up to 8.0MP (3840 x 2160) at 25fps
- Intelligent search across all Acupick cameras
- Warm LED light triggers on person/vehicle detection
- H.265 encoding for efficient storage & streaming
- Up to 30m infrared range; true day/night (auto ICR)
- Back/highlight compensation & true WDR (120dB)
- MicroSD slot for recording at the edge up to 512GB
- AI weather and anti-flicker scene self-adaption
- Next-Gen Smart Motion Detection (SMD 4.0) & Perimeter Protection to prevent false alarms, using VIP Vision NVRs



Record up to 4K in Real Time



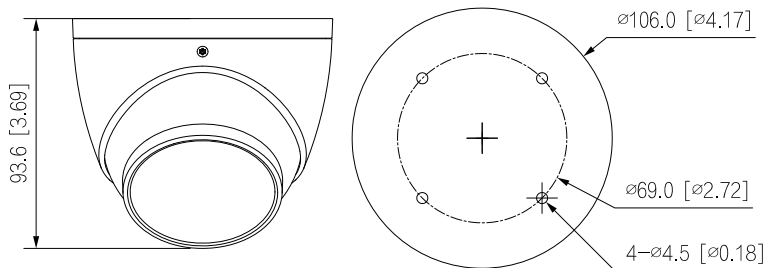
Intelligent people & vehicle search



AI Adapts Scene for Best Picture

Specifications		8.0MP Fixed AI Turret Dome	
<b>Ordering Information</b>		<b>VSIPP-8DIRG-I3</b>	
<b>Camera</b>	Image Sensor	1/2.7" 8.0MP Progressive Scan CMOS	
	Effective Pixels	3840 (H) x 2160 (V)	
	RAM / ROM	1 GB / 256MB	
	Min Illumination	0.007 Lux/F1.4 (Color), 0.0007 lux/F1.4 (B/W, 30 IRE), 0 lux (IR)	
	S/N Ratio	>56dB	
	Infrared System	2x warm LED light, 2 x Infrared LED, 30m range, Auto/manual on/off control	
	<b>Lens</b>	Lens / Iris	2.8mm F1.4 Fixed Lens
Field of View		Horizontal: 110°, Vertical: 58°, Diagonal: 132°	
Focus		Fixed / 1.4m Min. Focus Distance	
<b>DORI</b>	Detect (25px/m)	85 m	
	Observe (63px/m)	34 m	
	Recognise (125px/m)	17 m	
	Identify (250px/m)	8 m	
<b>Video</b>	Resolution	8.0MP (3840 x 2160) to CIF (352 x 288/352 x 240)	
	Frame Rate	Main	8.0MP (1 ~ 25fps)
		Sub	1080p (1 ~ 25fps)
		Third	1080p (1 ~ 25fps)
	Video Compression	H.265 / H.264H / H.264 / H.264B / MJPEG	
	Bit Rate	H.265: 3 ~ 16384Kbps / H.264: 3 ~ 16384Kbps	
	Bit Rate Control	Constant bit rate (CBR) / Variable bit rate (VBR) / Average bit rate (ABR)	
	Day/Night	Auto (ICR) / Color / B&W	
	Lighting Compensation	BLC / HLC / WDR (120dB)	
	Smart Scene Adaptive	SSA	
	White Balance	Auto / Natural / Street Lamp / Outdoor / Manual / Regional Custom	
	Gain Control	Auto / Manual	
	Noise Reduction	3D DNR	
Picture Control	Mirror / Flip (0°, 90°, 180°, 270°) (Support 90°/270° with 4.0MP resolution and lower)		
Video Functions	Motion Detection (4 zones), Region of Interest (4 zones), Privacy Masking (4 zones), Smart Infrared		
<b>IVS</b>	AI Functions	<b>Smart Motion Detection (SMD 4.0):</b> People and vehicle detection using motion detection <b>Perimeter Protection:</b> People and vehicle detection using tripwire or intrusion rules <b>Acupick:</b> Search by people/vehicle attribute (e.g colour) and track their movements	
	Intelligent search	Search people or vehicle detection events (SMD 4.0, Perimeter Protection)	
<b>Network</b>	Ethernet	RJ-45 (10/100 Base-T)	
	Protocol	IPv4; IPv6; HTTP; TCP; UDP; ARP; RTP; RTSP; RTCP; RTMP; SMTP; FTP; SFTP; DHCP; DNS; DDNS; QoS; UPnP; NTP; Multicast; ICMP; IGMP; NFS; SAMBA; PPPoE; SNMP	
	Streaming Method	Multicast	
	Max. User Access	20 Users	
<b>Interface</b>	Audio Interface	Built-in Mic / Audio Compression - G.711a; G.711mu; G.726; PCM; G.723	
	Alarm Interface	N/A	
	RS485	N/A	
	Edge Storage	MicroSD Card (up to 512GB) / NAS / FTP / SFTP	
	Interoperability	ONVIF / P2P / CGI	
<b>Environmental</b>	Power Supply	12VDC / PoE (802.3af)	
	Power Consumption	<7.4W / 9.5W (PoE)	
	Operating Conditions	-40°C ~ +60°C / ≤95% RH	
	Ingress Protection	IP67	
	Housing	Metal	
	Pan/Tilt/Rotation	Pan: 0° ~ 360°, Tilt: 0° ~ 78°, Rotation: 0° ~ 360°	
	Dimensions	Ø106mm x 94mm	
Net Weight	0.53kg		

### Application



Junction Box	Wall Mount	
	VSBKTA139	VSBKTB204W
Pole Mount		Ceiling Mount
VSBKTA139 + VSBKTA152E	VSBKTB204W + VSBKTA152E	VSBKTA106 + VSBKTB220C

Your local VIP Vision™ IP solutions professional: