

- AI People & Vehicle Detection
- AI Scene Adaptive
- 24/7 Colour
- Intruder Deterrence
- AcuPick search
- 8.0 MEGAPIXEL



Superb low light performance

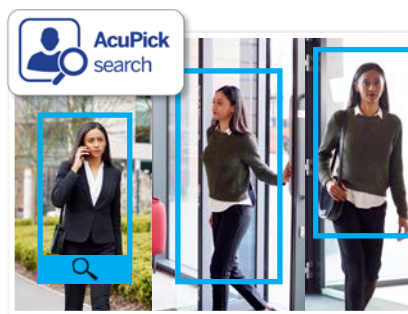
Professional AI Series: Fixed lens AI Active Deterrence turret Pro in 8.0MP

This Professional AI Active Deterrence Camera Pro combines surveillance, security lighting and a siren into a single camera to deter intruders during AI people & vehicle detection events. It takes the standard Active Deterrence camera and equips it with a large image sensor and image signal processor to capture colour images even in the most challenging of lighting conditions. Quickly search and track people & vehicles across all Acupick CCTV cameras in your security system.

- Stream up to 8.0MP (3840 x 2160) at 25fps
- Intelligent search across all Acupick cameras
- Activates spotlight, flashing light & siren, switching from IR to colour footage in response to alarm events
- 24/7 Colour low light footage as low as 0.008lx
- Up to 30m infrared, BLC/HLC & true WDR (120dB)
- Intelligent AI detection to identify people & vehicles
- Next-Gen Smart Motion Detection (SMD 4.0) & Perimeter Protection to prevent false alarms, using VIP Vision NVRs
- AI SSA detects/adjusts exposure to ensure clear video.



Spotlight, Siren & Blue/Red Strobe



Intelligent people & vehicle search



AI Adapts Scene for Best Picture

| Specifications | | 8.0MP Fixed AI Deterrence Turret | |
|----------------------|-------------------------------------|---|---------------------------|
| Camera System | | VSIPP-8DG-ID4-P | |
| Camera | Image Sensor | 1/1.8" 8.0MP Progressive Scan CMOS | |
| | Effective Pixels | 3840 (H) x 2160 (V) | |
| | RAM / ROM | 2G / 256MB | |
| | Min Illumination | 0.0008 lux/F1.0 (Colour, 30 IRE) / 0.0004 lux/F1.0 (B/W, 30IRE) / 0 lux (IR) | |
| | Electronic Shutter | 1/3 s-1/100,000 s | |
| | S/N Ratio | > 56dB | |
| | Infrared System | 2 x Infrared LED, 30m range, Auto/manual on/off control | |
| | LED Illumination | 2 x Spotlight (Warm White) 30m range, 1 x Red & Blue Alarm Light | |
| | Lens | Lens / Iris | 2.8mm F1.0 Fixed Lens |
| Field of View | | Horizontal: 109°, Vertical: 59°, Diagonal: 131° | |
| Focus | | Auto Focus / 3.2m Min. Focus Distance | |
| DORI | Detect (25px/m) | 82m | |
| | Observe (63px/m) | 33m | |
| | Recognise (125px/m) | 16m | |
| | Identify (250px/m) | 8m | |
| Video | Resolution | 8MP (3840 x 2160) to CIF (352 x 288 / 352 x 240) | |
| | Frame Rate | Main | 8.0MP (1 ~ 25fps) |
| | | Sub | 1080p (1 ~ 25fps) |
| | | Third | 1080p (1 ~ 25fps) |
| | Video Compression | H.265+ / H.264 / H.264H / H.264B / MJPEG | |
| | Bit Rate | H.265: 3 ~ 16384Kbps / H.264: 3 ~ 16384Kbps | |
| | Bit Rate Control | Constant Bit Rate (CBR) / Variable Bit Rate (VBR) / Average Bit Rate (ABR) | |
| | Day/Night | Auto (ICR) / Colour / B/W | |
| | Lighting Compensation | BLC / HLC / WDR (120dB) | |
| | Smart Scene Adaptive | SSA | |
| | White Balance | Auto / Natural / Street Lamp / Outdoor / Manual / Regional Custom | |
| | Gain Control | Auto | |
| | Noise Reduction | 3D NR | |
| Picture Control | Mirror / Flip (0°, 90°, 180°, 270°) | | |
| IVS | Video Functions | Motion Detection (4 zones), Region of Interest (4 zones), Privacy Masking (4 zones), Smart Illumination, Defog, Object Abandoned / Missing | |
| | AI Functions | Event Triggers: Motion Detection, Perimeter Protection, Video Tampering, Scene Changing, Network Disconnection, IP Address Conflict, Illegal Access, Storage Anomaly Perimeter Protection: People and vehicle detection using tripwire or intrusion rules Loitering detection: People gathering and parking detection Acupick: Search by people/vehicle attribute (e.g colour) and track their movements | |
| | Intelligent search | Search people or vehicle detection events (Perimeter Protection) | |
| Network | Ethernet | RJ-45 (10/100Base-T) | |
| | Protocol | IPv4; IPv6; HTTP; TCP; UDP; ARP; RTP; RTSP; RTCP; RTMP; SMTP; FTP; SFTP; DHCP; DNS; DDNS; QoS; UPnP; NTP; Multicast; ICMP; IGMP; NFS; SAMBA; PPPoE; SNMP | |
| | Streaming Method | Unicast / Multicast | |
| | Max. User Access | 20 Users (Total bandwidth: 64MB) | |
| Interface | Video Interface | N/A | |
| | Audio Interface | Dual built-in Mic & Built-in Speaker, 1 Audio In/Output (RCA) / Audio Compression - PCM; G.711a; G.711Mu; G.726; G.723 | |
| | Alarm Interface | 1 channel in: 5mA 3-5VDC / 1 channel out: 300mA 12VDC | |
| | RS485 | N/A | |
| | Edge Storage | MicroSD Card (up to 512GB) / NAS / FTP / SFTP | |
| | Interoperability | ONVIF (Profile S, Profile G, Profile T) / P2P / CGI | |
| Environmental | Power Supply | 12VDC / PoE (820.3af) | |
| | Power Consumption | < 8.2 W (12 VDC); < 10 W (PoE) | |
| | Operating Conditions | -40°C ~ +60°C / ≤95% RH | |
| | Ingress Protection | IP67 | |
| | Vandal Resistance | N/A | |
| | Housing | Metal | |
| | Pan/Tilt/Rotation | Pan: 0°-360° / Tilt: 0°-78° / Rotation: 0°-360° | |
| Dimensions | Φ122 mm x 116mm | | |
| Net Weight | 0.8kg | | |
| Accessories | | Junction Box | Ceiling Mount |
| | | VSBKTA137 | VSBKTA109 + VSBKTB220C |
| | | Wall Mount | Pole Mount |
| | | VSBKTB205W-E | VSBKTB205W-E + VSBKTA152E |

Your local VIP Vision™ IP solutions professional: