

- AI People & Vehicle Detection
Gen. 2
- AI Scene Adaptive
- 24/7 Colour
- Intruder Deterrence
- AI Quick Search
- 8.0**
MEGAPIXEL
- 6.0**
MEGAPIXEL



3-in-1 deterrence solution

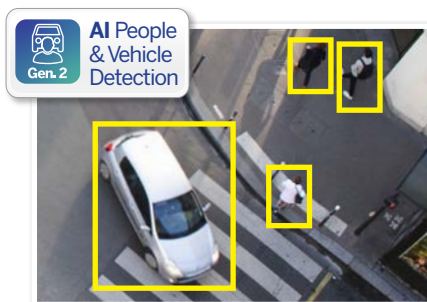
Professional AI Series: Fixed lens AI active deterrence turrets in 6.0MP and 8.0MP

The Professional AI Series utilises the latest in AI machine learning technology to identify people & vehicles with superior accuracy and reliability. The active deterrence range incorporates AI detection and a variety of in-camera features to deter intruders. Upon a human or vehicle detection event, these cameras can trigger a white LED spotlight for security lighting, a flashing blue/red LED strobe and a loud siren with programmable message/tone, to deter intruders. They are ideal for active security across a variety of residential and commercial applications.

- Stream up to 8.0MP (3840 x 2160) at 25fps
- Activates spotlight, flashing light & siren, switching from IR to colour footage in response to alarm events
- 24/7 Colour low light footage as low as 0.004lx
- Up to 30m infrared, BLC/HLC & true WDR (120dB)
- Intelligent AI detection to identify people & vehicles
- Next-Gen Smart Motion Detection (SMD 4.0) & Perimeter Protection to prevent false alarms, using VIP Vision NVRs
- AI SSA detects/adjusts exposure to ensure clear video.
- IP67 weather rated housing for outdoor use



Spotlight, Siren & Blue/Red Strobe



AI People & Vehicle Detection
Gen. 2

AI Human & Vehicle Detection



AI Scene Adaptive

AI Adapts Scene for Best Picture

Specifications		6.0MP Fixed AI Deterrence Turret	8.0MP Fixed AI Deterrence Turret	
Ordering Information		VSIPP-6DG-ID4	VSIPP-8DG-ID4	
Image Sensor		1/2.7" 6.0MP Progressive Scan CMOS	1/2.7" 8.0MP Progressive Scan CMOS	
Effective Pixels		3072 (H) x 2048 (V)	3840 (H) x 2160 (V)	
RAM / ROM		2G / 256MB		
Min Illumination		0.005 Lux/F1.4 (Color, 30 IRE), 0.0005 lux/F1.4 (B/W, 30 IRE), 0 lux (IR)	0.004 Lux/F1.0 (Color), 0.0004 lux/F1.0 (B/W, 30 IRE), 0 lux (IR)	
Electronic Shutter		1/3 ~ 1/100,000s		
S/N Ratio		> 56dB		
Infrared System		1 x Infrared LED, 30m range, Auto/manual on/off control		
LED Illumination		1 x Spotlight (Warm White), 1 x Red & Blue Alarm Light		
Lens / Iris		2.8mm F1.0 Fixed Lens		
Field of View		Horizontal: 97°, Vertical: 70°, Diagonal: 128°	Horizontal: 106°, Vertical: 55°, Diagonal: 125°	
Focus		Auto Focus / 1.5m Min. Focus Distance		
DORI				
Detect (25px/m)		66m		
Observe (63px/m)		26m		
Recognise (125px/m)		13m		
Identify (250px/m)		7m		
Resolution		6.0MP (3072 x 2048) to CIF (352 x 288 288/352 x 240)	8.0MP (3840 x 2160) to CIF (352 x 288 288/352 x 240)	
Frame Rate		6.0MP (1 ~ 25fps)	8.0MP (1 ~ 25fps)	
Main		704 x 576 (1 ~ 25fps)		
Sub		1080p (1 ~ 25fps)		
Third				
Video Compression		H.265+ / H.265 / H.264+ / H.264 / H.264B / MJPEG		
Bit Rate		H.265: 3 ~ 16384Kbps / H.264: 3 ~ 16384Kbps		
Bit Rate Control		Constant Bit Rate (CBR) / Variable Bit Rate (VBR) / Average Bit Rate (ABR)		
Day/Night		Auto (ICR) / Colour / B&W		
Lighting Compensation		BLC / HLC / WDR (120dB)		
Smart Scene Adaptive		SSA		
White Balance		Auto / Natural / Street Lamp / Outdoor / Manual / Regional Custom		
Gain Control		Auto		
Noise Reduction		3D DNR		
Picture Control		Mirror / Flip (0°, 90°, 180°, 270°)		
Video Functions		Motion Detection (4 zones), Region of Interest (4 zones), Privacy Masking (4 zones), Smart Illumination, Defog, Object Abandoned / Missing		
AI Functions		Event Triggers: Motion Detection, Perimeter Protection, Video Tampering, Scene Changing, Network Disconnection, IP Address Conflict, Illegal Access, Storage Anomaly		
Intelligent search		Perimeter Protection: People and vehicle detection using tripwire or intrusion rules Loitering detection: People gathering and parking detection		
Search people or vehicle detection events (Perimeter Protection), Search by attributes, such as clothing/vehicle colour and vehicle type (AI Quick Pick)				
Ethernet		RJ-45 (10/100Base-T)		
Protocol		IPv4; IPv6; HTTP; TCP; UDP; ARP; RTP; RTSP; RTCP; RTMP; SMTP; FTP; SFTP; DHCP; DNS; DDNS; QoS; UPnP; NTP; Multicast; ICMP; IGMP; NFS; SAMBA; PPPoE; SNMP; P2P		
Streaming Method		Unicast / Multicast		
Max. User Access		20 Users (Total bandwidth: 64MB)		
Video Interface		N/A		
Audio Interface		Built-in Mic & Built-in Speaker, 1 Audio In/Output (RCA) / Audio Compression - PCM; G.711a; G.711Mu; G.726; G.723		
Alarm Interface		1 channel in: 5mA 3-5VDC / 1 channel out: 300mA 12VDC		
RS485		N/A		
Edge Storage		MicroSD Card (up to 256GB) / NAS / FTP / SFTP		
Interoperability		ONVIF (Profile S, Profile G, Profile T) / P2P / CGI / Milestone		
Power Supply		12VDC / PoE		
Power Consumption		< 8.6 W (12 VDC); < 10.1 W (PoE)		
Operating Conditions		-40°C ~ +60°C / ≤95% RH		
Ingress Protection		IP67		
Vandal Resistance		N/A		
Housing		Metal		
Pan/Tilt/Rotation		Pan: 0° ~ 360°, Tilt: 0° ~ 78°, Rotation: 0° ~ 360°		
Dimensions		Ø122mm x 111mm		
Net Weight		0.75kg		
Accessories			Junction Box VSBKTA137 or VSBKTA130E	Ceiling Mount VSBKTA109 + VSBKTB220C
		Wall Mount VSBKTB205W-E or VSBKTB203W	Pole Mount VSBKTB205W-E + VSBKTA152E	

Your local VIP Vision™ IP solutions professional: