

180° Intruder deterrence.

Professional AI Series: 180° Fixed lens AI active deterrence bullet in 8.0MP

The Professional AI Series utilises the latest in AI machine learning technology to identify people & vehicles with superior accuracy and reliability. The active deterrence range incorporates AI detection and a variety of in-camera features to deter intruders. Upon a human or vehicle detection event, these cameras can trigger a white LED spotlight for security lighting, a flashing blue/red LED strobe and a loud siren with programmable message/tone, to deter intruders. They are ideal for active security across a variety of residential and commercial applications.

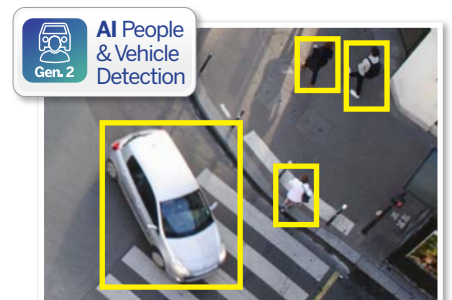
- Stream up to 8.0MP (4096 x 1860) at 20fps
- Activates spotlight, flashing light & siren, switching from IR to colour footage in response to alarm events
- 24/7 Colour low light footage as low as 0.005lx
- Up to 25m infrared, BLC/HLC & true WDR (120dB)
- Intelligent AI detection to identify people & vehicles
- Next-Gen Smart Motion Detection (SMD 4.0) & Perimeter Protection to prevent false alarms, using VIP Vision NVRs
- Dual cameras in one housing for a 180° field of view
- IP67 weather rated housing for outdoor use



180° Coverage Surveillance



Spotlight, Siren & Blue/Red Strobe



AI Human & Vehicle Detection

Specifications		8.0MP Fixed 180° AI Deterrence Bullet		
Ordering Information		VSIPP-8BD-ID3		
Camera	Image Sensor	Dual 1/2.7" 8.0MP Progressive Scan CMOS		
	Effective Pixels	4096 (H) x 1860 (V)		
	RAM / ROM	1GB / 128MB		
	Min Illumination	0.005 Lux/F1.4 (Color), 0.0005 lux/F1.4 (B/W, 30 IRE), 0 lux (IR)		
	Electronic Shutter	1/3 ~ 1/100,000s		
	S/N Ratio	> 56dB		
	Infrared System	2 x Infrared LED, 25m range, Auto/manual on/off control		
	LED Illumination	2 x Spotlight (Warm White), 1 x Red & Blue Alarm Light		
	Lens	Lens / Iris	2.8mm F1.4 Fixed Lens	
		Field of View	Horizontal: 180°, Vertical: 86°	
Focus		Auto Focus / 0.8m Min. Focus Distance		
DORI	Detect (25px/m)	51m		
	Observe (63px/m)	20m		
	Recognise (125px/m)	10m		
	Identify (250px/m)	5m		
Video	Resolution	8.0MP (4096 x 1860) to (960 x 432)		
	Frame Rate	Main	8.0MP (1 ~ 20fps)	
		Sub	1200 x 530 (1 ~ 20fps)	
		Third	1920 x 860 (1 ~ 20fps)	
	Video Compression	H.265+ / H.265 / H.264+ / H.264 / H.264B / MJPEG		
	Bit Rate	H.265: 6 ~ 16384Kbps / H.264: 6 ~ 16384Kbps		
	Bit Rate Control	Constant bit rate (CBR) / Variable bit rate (VBR)		
	Day/Night	Auto (ICR) / Color / B&W		
	Lighting Compensation	BLC / HLC / WDR (120dB)		
	Smart Scene Adaptive	Yes		
	White Balance	Auto / Natural / Street Lamp / Outdoor / Manual		
	Gain Control	Auto		
Noise Reduction	3D DNR			
IVS	Video Functions	Motion Detection (4 zones), Region of Interest (4 zones), Privacy Masking (4 zones), Smart Illumination, Defog Event Triggers: Motion Detection, Perimeter Protection, Video Tampering, Scene Changing, Network Disconnection, IP Address Conflict, Illegal Access, Storage Anomaly		
	AI Functions	Perimeter Protection: People and vehicle detection using tripwire or intrusion rules		
	Intelligent search	Search people or vehicle detection events (Perimeter Protection)		
Network	Ethernet	RJ-45 (10/100Base-T)		
	Protocol	IPv4; IPv6; HTTP; TCP; UDP; ARP; RTP; RTSP; RTCP; RTMP; SMTP; FTP; SFTP; DHCP; DNS; DDNS; QoS; UPnP; NTP; Multicast; ICMP; IGMP; NFS; SAMBA; PPPoE; SNMP; P2P		
	Streaming Method	Multicast		
	Max. User Access	20 Users (Total bandwidth: 64MB)		
Interface	Video Interface	N/A		
	Audio Interface	Built-in Mic & Built-in Speaker, 1 Audio In/Output (RCA) / Audio Compression - PCM; G.711a; G.711Mu; G.726; G.723		
	Alarm Interface	1 channel in: 5mA 3-5VDC / 1 channel out: 300mA 12VDC		
	RS485	N/A		
	Edge Storage	MicroSD Card (up to 256GB) / NAS / FTP / SFTP		
Interoperability	ONVIF (Profile S, Profile G, Profile T) / CGI			
Environmental	Power Supply	Deterrence: <9W (12VDC), <10.35W (PoE)		
	Power Consumption	<9W, <10.3W (PoE)		
	Operating Conditions	-40°C ~ +60°C / ≤95% RH		
	Ingress Protection	IP67		
	Vandal Resistance	N/A		
	Housing	Metal		
	Pan/Tilt/Rotation	Pan: 0° ~ 360°, Tilt: 0° ~ 78°, Rotation: 0° ~ 360°		
Dimensions	Ø183mm x 99mm x 78mm			
Net Weight	0.69kg			
Accessories			Junction Box	
			VSBKTA130E	

Your local VIP Vision™ IP solutions professional: