

AI detects & deters intruders.

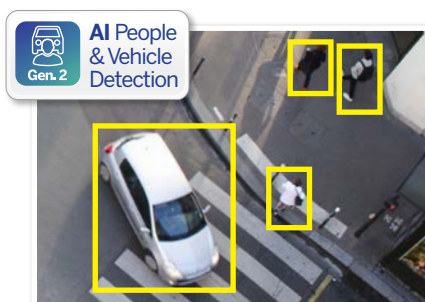
Professional AI Series: Fixed lens AI active deterrence turrets in 6.0MP and 8.0MP

The Professional AI Series utilises the latest in AI machine learning technology to identify people & vehicles with superior accuracy and reliability. The active deterrence range incorporates AI detection and a variety of in-camera features to deter intruders. Upon a human or vehicle detection event, these cameras can trigger a white LED spotlight for security lighting, a flashing blue/red LED strobe and a loud siren with programmable message/tone, to deter intruders. They are ideal for active security across a variety of residential and commercial applications.

- Stream up to 8.0MP (3840 x 2160) at 25fps
- Activates spotlight, flashing light & siren, switching from IR to colour footage in response to alarm events
- 24/7 Colour low light footage as low as 0.003lx
- Up to 30m infrared, BLC/HLC & true WDR (120dB)
- Intelligent AI detection to identify people & vehicles
- Next-Gen Smart Motion Detection (SMD 4.0) & Perimeter Protection to prevent false alarms, using VIP Vision NVRs
- AI SSA detects/adjusts exposure to ensure clear video.
- IP67 weather rated housing for outdoor use



Spotlight, Siren & Blue/Red Strobe



AI Human & Vehicle Detection



AI Adapts Scene for Best Picture

Specifications	6.0MP Fixed AI Deterrence Turret	8.0MP Fixed AI Deterrence Turret								
Ordering Information	VSIPP-6DG-ID3	VSIPP-8DG-ID3 VSIPP-8DG-ID3-B								
Image Sensor	1/2.7" 6.0MP Progressive Scan CMOS	1/2.8" 8.0MP Progressive Scan CMOS								
Effective Pixels	3200 (H) x 1800 (V)	3840 (H) x 2160 (V)								
RAM / ROM	512MB / 128MB									
Min Illumination	0.003 Lux/F1.0 (Color), 0.0003 lux/F1.0 (B/W, 30 IRE), 0 lux (IR)	0.004 Lux/F1.0 (Color), 0.0004 lux/F1.0 (B/W, 30 IRE), 0 lux (IR)								
Electronic Shutter	1/3 ~ 1/100,000s									
S/N Ratio	> 56dB									
Infrared System	1 x Infrared LED, 30m range, Auto/manual on/off control									
LED Illumination	1 x Spotlight (Warm White), 1 x Red & Blue Alarm Light									
Lens / Iris	2.8mm F1.0 Fixed Lens	2.8mm F1.0 Fixed Lens								
Field of View	Horizontal: 97°, Vertical: 70°, Diagonal: 128°	Horizontal: 106°, Vertical: 55°, Diagonal: 125°								
Focus	Auto Focus / 1.5m Min. Focus Distance	Auto Focus / 2m Min. Focus Distance								
DORI										
Detect (25px/m)	66m	91m								
Observe (63px/m)	26m	36m								
Recognise (125px/m)	13m	18m								
Identify (250px/m)	7m	9m								
Resolution	6.0MP (3200 x 1800) to CIF (352 x 288)	8.0MP (3840 x 2160) to CIF (352 x 288)								
Frame Rate	Main: 6.0MP (1 ~ 25fps)	8.0MP (1 ~ 25fps)								
	Sub: 704 x 576 (1 ~ 25fps)									
	Third: 1080p (1 ~ 25fps)									
Video Compression	H.265+ / H.265 / H.264+ / H.264 / H.264B / MJPEG									
Bit Rate	H.265: 32 ~ 20480Kbps / H.264: 12 ~ 20480Kbps									
Bit Rate Control	Constant bit rate (CBR) / Variable bit rate (VBR)									
Day/Night	Auto (ICR) / Colour / B&W									
Lighting Compensation	BLC / HLC / WDR (120dB)									
Smart Scene Adaptive	SSA									
White Balance	Auto / Natural / Street Lamp / Outdoor / Manual									
Gain Control	Auto / Manual									
Noise Reduction	3D DNR									
Picture Control	Mirror / Flip (0°, 90°, 180°, 270°)									
Video Functions	Motion Detection (4 zones), Region of Interest (4 zones), Privacy Masking (4 zones), Smart Illumination, Defog, Object Abandoned / Missing, Heat Map Event Triggers: Motion Detection, Perimeter Protection, Video Tampering, Scene Changing, Network Disconnection, IP Address Conflict, Illegal Access, Storage Anomaly									
AI Functions	Perimeter Protection: People and vehicle detection using tripwire or intrusion rules Loitering detection: People gathering and parking detection									
Intelligent search	Search people or vehicle detection events (Perimeter Protection)									
Network	RJ-45 (10/100Base-T)									
Protocol	IPv4; IPv6; HTTP; TCP; UDP; ARP; RTP; RTSP; RTCP; RTMP; SMTP; FTP; SFTP; DHCP; DNS; DDNS; QoS; UPnP; NTP; Multicast; ICMP; IGMP; NFS; SAMBA; PPPoE; SNMP									
Streaming Method	Unicast / Multicast									
Max. User Access	20 Users (Total bandwidth: 72MB)									
Video Interface	N/A									
Audio Interface	Built-in Mic & Built-in Speaker, 1 Audio In/Output (RCA) / Audio Compression - PCM; G.711a; G.711Mu; G.726; G.723									
Alarm Interface	1 channel in: 5mA 3-5VDC / 1 channel out: 300mA 12VDC									
RS485	N/A									
Edge Storage	MicroSD Card (up to 256GB) / NAS / FTP / SFTP									
Interoperability	ONVIF (Profile S, Profile G, Profile T) / P2P / CGI / Milestone									
Power Supply	12VDC / PoE (802.3af)									
Power Consumption	<8.8W	<10.2W								
Operating Conditions	-40°C ~ +60°C / ≤95% RH									
Ingress Protection	IP67									
Vandal Resistance	N/A									
Housing	Metal									
Pan/Tilt/Rotation	Pan: 0° ~ 360°, Tilt: 0° ~ 78°, Rotation: 0° ~ 360°									
Dimensions	Ø122mm x 111mm									
Net Weight	0.75kg									
Accessories		<table border="1"> <tr> <td>Junction Box</td> <td>Ceiling Mount</td> </tr> <tr> <td>VSBKTA137 or VSBKTA130E</td> <td>VSBKTA109 + VSBKTB220C</td> </tr> <tr> <td>Wall Mount</td> <td>Pole Mount</td> </tr> <tr> <td>VSBKTB205WE or VSBKTB203W</td> <td>VSBKTB205W + VSBKTA152E</td> </tr> </table>	Junction Box	Ceiling Mount	VSBKTA137 or VSBKTA130E	VSBKTA109 + VSBKTB220C	Wall Mount	Pole Mount	VSBKTB205WE or VSBKTB203W	VSBKTB205W + VSBKTA152E
Junction Box	Ceiling Mount									
VSBKTA137 or VSBKTA130E	VSBKTA109 + VSBKTB220C									
Wall Mount	Pole Mount									
VSBKTB205WE or VSBKTB203W	VSBKTB205W + VSBKTA152E									

Your local VIP Vision™ IP solutions professional: