

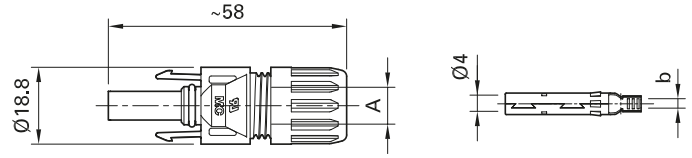
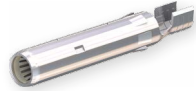
**公和母电缆连接器  
MC4**

**Female and male cable coupler  
MC4**

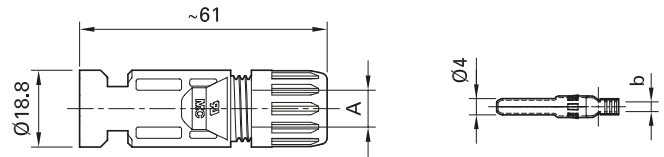
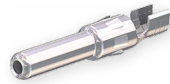
公和母电缆连接器分别为单独零件  
(包括绝缘部分)

Female and male cable coupler as individual part  
(including insulating part)

PV-KBT4...



PV-KST4...



型号 Type	订货号 Order No.	母电缆连接器 Female cable coupler	公电缆连接器 Male cable coupler	Ø-电缆固定头范围 Ø range of cable gland	导线截面积 Conductor cross section		b (mm)	认证 Approvals
				A (mm)	mm <sup>2</sup>	AWG		
PV-KBT4/2,5I-UR	32.0010P0001-UR	×		3 - 6	1,5; 2,5	14	3	×      ×      ×
PV-KST4/2,5I-UR	32.0011P0001-UR		×	3 - 6	1,5; 2,5	14	3	
PV-KBT4/2,5II-UR	32.0012P0001-UR	×		5,5 - 9	1,5; 2,5	14	3	
PV-KST4/2,5II-UR	32.0013P0001-UR		×	5,5 - 9	1,5; 2,5	14	3	
PV-KBT4/6I-UR	32.0014P0001-UR	×		3 - 6	4; 6	12; 10	5	
PV-KST4/6I-UR	32.0015P0001-UR		×	3 - 6	4; 6	12; 10	5	
PV-KBT4/6II-UR	32.0016P0001-UR	×		5,5 - 9	4; 6	12; 10	5	
PV-KST4/6II-UR	32.0017P0001-UR		×	5,5 - 9	4; 6	12; 10	5	
PV-KBT4/8II-UR	32.0080P0001-UR	×		6,5 - 8,9	-	8	-	×      ×
PV-KST4/8II-UR	32.0081P0001-UR		×	6,5 - 8,9	-	8	-	
PV-KBT4/10II	32.0034P0001	×		5,5 - 9	10	-	7,2	×
PV-KST4/10II	32.0035P0001		×	5,5 - 9	10	-	7,2	

安全锁紧夹, 见第55 页  
密封盖, 见第57页  
装配工具, 见第63页

**Safety lock clip** page 55  
**Sealing caps** page 57  
**Assembly tools** page 63

装配说明 **MA231**  
[www.multi-contact.com](http://www.multi-contact.com)

**Assembly Instructions MA231**  
[www.multi-contact.com](http://www.multi-contact.com)

## 公和母电缆连接器 MC4

公和母电缆连接器分别为单独零件  
(包括绝缘部分)

PV-KBT4...



PV-KST4...



- 自2002年诞生，一直被业内视作光伏连接器行业标准
- 经过了13年来在实际光伏电站运行使用中的检验
- 独有的MULTILAM核心技术确保更低的接触电阻，提高电站的安全性，实现更高发电量
- 通过抗氨腐蚀测试和防盐雾测试，能够适应更多更复杂电站环境
- 可提供成品线束或客户化定制线束
- 金属芯可提供散装或成卷(2000个)包装形式

技术参数	Technical data	
连接器系统	Connector system	Ø 4 mm
额定电压	Rated voltage	1000 V DC / 1500 V DC (IEC) <sup>1)</sup> 1000 V DC / 1500 V DC (UL)
额定电流 IEC (90 °C)	Rated current IEC (90 °C)	17 A (1,5 mm <sup>2</sup> ) 22,5 A (2,5 mm <sup>2</sup> ; 14 AWG) 30 A (4 mm <sup>2</sup> , 6 mm <sup>2</sup> ; 12 AWG, 10 AWG) 43 A (10 mm <sup>2</sup> ) 50 A (8 AWG)
额定电流 IEC (85 °C)	Rated current IEC (85 °C)	17 A (1,5 mm <sup>2</sup> ) 22,5 A (2,5 mm <sup>2</sup> ; 14 AWG) 39 A (4 mm <sup>2</sup> ; 12 AWG) 45 A (6 mm <sup>2</sup> ; 10 AWG)
额定脉冲电压	Rated impulse voltage	12 kV (1000 V DC (IEC)) 16 kV (1500 V DC (IEC))
环境温度范围	Ambient temperature range	-40 °C...+90 °C (IEC) -40 °C...+75 °C (UL) -40 °C...+70 °C (UL: 14 AWG)
温度上限	Upper limiting temperature	105 °C (IEC)
防护等级, 已插合 未插合	Degree of protection, mated unmated	IP65, IP68 (1 h / 1 m) IP2X
过压类别 / 污染等级	Overvoltage category / Pollution degree	CATIII / 3
连接器的接触电阻	Contact resistance of plug connectors	≤ 0,35 mΩ
安全等级	Safety class	1000 V DC: II 1500 V DC: 0
连接系统	Contact system	MULTILAM
接线方式	Type of termination	压接 / Crimping
触点材质	Contact material	铜、镀锡 / Copper, tin plated
绝缘材料	Insulation material	PC / PA
锁紧系统	Locking system (UL)	嵌入式 / Locking type
阻燃等级	Flame class	UL94-V0
耐氨性 (参考DLG)	Ammonia resistance (acc. to DLG)	1500 h, 70 °C / 70 % RH, 750 ppm
盐雾试验, 严酷等级6	Salt mist spray test, degree of severity 6	IEC 60068-2-52
TÜV 认证, 符合EN 50521标准	TÜV-Rheinland certified, in accordance with EN 50521	R60028286
TÜV 认证, 符合2Pfg2330标准	TÜV-Rheinland certified, in accordance with 2Pfg2330	R60087448
UL认证部件, 符合UL 6703标准	UL recognized component, in accordance with UL 6703	E343181
CSA认证, 符合UL 6703标准	CSA certified, in accordance with UL 6703	250725
CQC认证, 符合CNCA/CTS 0002-2012标准	CQC certified, in accordance with CNCA/CTS 0002-2012	CQC 16024138286

<sup>1)</sup> 2Pfg2330: 仅用于限制进入的光伏电站系统

<sup>1)</sup> 2Pfg2330: only approved for locations with restricted access