



**Starlight  
Camera**



**AI People  
& Vehicle  
Detection**

# Intelligent AI auto-tracking

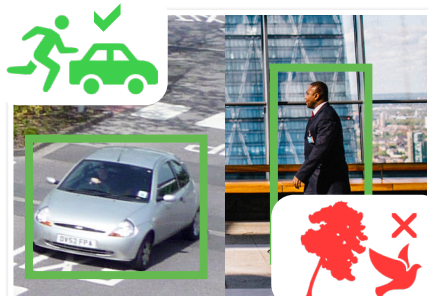
**Pro AI Series: perimeter protection PTZ domes in 2.0MP, 4.0MP & 8.0MP**

Offer a versatile surveillance experience and ensure all areas are covered with up to 32x optical zoom, auto-tracking and fast endless 360° panning. Experience impressive AI powered video analytics and filter false alarms with AI face detection and AI Perimeter Protection technology, providing meaningful video event notifications in real-time.

- Stream up to 8.0MP (3840 x 2160) at 25fps
- Up to 32x optical zoom lens (61.6°~2° viewing angles)
- Low light colour performance at 0.005lx; 150m IR
- Endless 360° panning and -15° ~ 90° tilt adjustable
- MicroSD card slot for edge recording applications
- Perimeter Protection to identify people & vehicles
- Combine Perimeter Protection with Tripwire/Intrusion to prevent false alarms, all using any VIP Vision NVR
- Power by PoE+ (802.3at) or 24VAC (PSU included)
- IP67 weather rated, lightweight dome housing



**Up to 4K Ultra HD Resolution**



**Smart Person & Vehicle Detection**



**Up to 32x Lossless Optical Zoom**

Specifications		2.0MP 25x Zoom PTZ with AI	4.0MP 32x Zoom PTZ with AI	8.0MP 25x Zoom PTZ with AI	
Ordering Information		<b>VSSIPPTZ-2IRP-I2</b>	<b>VSSIPPTZ-4IRP-I2</b>	<b>VSSIPPTZ-8IRP-I2</b>	
Camera	Image Sensor	1/2.8" 2.0MP Starvis™ CMOS	1/2.8" 4.0MP Starvis™ CMOS	1/1.8" 8.0MP Starvis™ CMOS	
	Effective Pixels	1920 (H) x 1080 (V)	2560 (H) x 1440 (V)	3840 (H) x 2160 (V)	
	RAM / ROM	1GB / 4GB			
Min Illumination		0.005 Lux/F1.6 (Colour), 0.0005 Lux/ F1.6 (B/W)/, 0 Lux (IR Light On)	0.005 Lux/F1.35 (Colour), 0.0005 Lux/ F1.35 (B/W)/, 0 Lux (IR Light On)	0.005 Lux/F1.6 (Colour), 0.0005 Lux/ F1.6 (B/W)/, 0 Lux (IR Light On)	
Infrared System		4 x Infrared LED, 150m range, Zoom Prio/Auto/Manual/Smart IR On/Off control			
Lens	Lens / Iris	4.8mm ~ 120mm F1.6 ~ F3.5 Motorised Lens	4.8mm ~ 154mm F1.35~ F4.4 Motorised Lens	5.4mm ~ 135mm F1.6 ~ F4.0 Motorised Lens	
	Field of View	58.7° ~ 2.8° (H), 33.2° ~ 1.5° (V), 67.5 ~ 3.2° (D) (25x Optical Zoom)	55.81° ~ 2.37° (H), 31.92° ~ 1.34° (V), 63.71° ~ 2.71° (D) (32x Optical Zoom)	61.6° ~ 3.6° (H), 35.7° ~ 2° (V), 66.6 ~ 4° (D) (25x Optical Zoom)	
	Focus	Auto/Semi-Auto/Manual / 0.1m ~ 1.5m Min. Focus Distance			
DORI	Detect (25px/m)	1614m	2124m	2700m	
	Observe (63px/m)	646m	839m	1066m	
	Recognise (125px/m)	323m	425m	540m	
	Identify (250px/m)	161m	212m	270m	
Pan / Tilt Range		Pan: 0° ~ 360° (endless) / Tilt: -15° ~ 90° / Auto Flip 180°			
PTZ Speed		Preset: Pan: 400°/s; Tilt: 300°/s Manual: Pan: 300°/s; Tilt: 200°/s			
Modes / Presets		Up to 300 presets / 5 Pattern, 8 Tour, 5 scanning, Auto Pan, Auto Scan			
Start-up Action		Auto-restore to previous PTZ/lens status			
Auto Tracking		Support			
Video	Resolution	1080p (1920 x 1080) to CIF (352 x 288)	4.0MP (2560 x 1440) to CIF (352 x 288)	8.0MP (3840 x 2160) to CIF (352 x 288)	
	Frame Rate	Main	1080p (1 ~ 25fps)	4.0MP (1 ~ 25fps)	8.0MP (1 ~ 25fps)
		Sub		D1 (1 ~ 25fps)	
		Third	1080p (1 ~ 25fps)	720p (1 ~ 25fps)	1080p (1 ~ 25fps)
	Video Compression	H.265+ / H.265 / H.264+ / H.264 / MJPEG			
	Bit Rate	H.265/H.264: 3 kbps-20480 kbps		H.265/H.264: 51 kbps-16384 kbps	
	Bit Rate Control	Constant bit rate (CBR) / Variable bit rate (VBR)			
	Day/Night	Auto (ICR) / Color / B&W			
	Lighting Compensation	BLC / HLC / WDR (120dB)			
	White Balance	Auto / Indoor / Outdoor / Tracking / Manual / Sodium lamp / Natural light / Street lamp			
Gain Control	Auto / Manual				
Noise Reduction	2D / 3D DNR				
Picture Control	Flip 0°/180°				
IVS	Intelligent Functions	Abandoned/Missing Object, Motion Detection, Region of Interest, Electronic Image Stabilisation, Privacy Masking (24 zones), Defog			
	Perimeter Protection	Tripwire & Intrusion (Add recognition of humans & vehicles)			
	Intelligent Search	Via NVR Smart Search, Search tripwire/intrusion events by people or vehicle			
	SMD+	Filter motion detection alarms, recognises humans and vehicles from other moving objects			
Network	Metadata	Supports human, motor vehicles and non motor vehicle search. Supports face image capture and footage search by face image & facial attributes			
	Ethernet	RJ-45 (10/100Base-T)			
	Protocol	IPv4; IPv6; HTTP; HTTPS; 802.1x; Qos; FTP; SMTP; UPnP; SNMPv1/v2c/v3 (MIB-2); DNS; DDNS; NTP; RTSP; RTP; TCP; UDP; IGMP; ICMP; DHCP; PPPoE; ARP; RTCP			
	Streaming Method	Unicast / Multicast			
Interface	Max. User Access	20 Users			
	Audio Interface	1 Input / 1 Output / Compression: G.711A; G.711Mu; G.726; AAC; G.722.1; G.723; G.729; PCM; MPEG2-Layer2			
	Alarm Interface	2 Inputs / 1 Output			
	RS485	N/A			
Environmental	Edge Storage	FTP; Micro SD card (256G); P2P			
	Interoperability	ONVIF Profile S&G&T; CGI			
	Power Supply	24VAC/3A (±25%) / PoE+ (802.3at)			
	Power Consumption	<13W / <22W (IR on)	<13W / <22W (IR on)	<12W / <21W (IR on)	
	Operating Conditions	-40° ~ +70° C / Less than 95% RH			
	Ingress Protection	IP67			
	Vandal Resistance	IK10			
	Surge Protection	TVS 6000V Lightning Protection / Surge Protection			
Housing	Metal				
Dimensions	Ø190mm x 332mm				
Net Weight	4.7kg				

Application							
Included Accessories		Wall Mount		Pole Mount		Ceiling Mount	Parapet Mount
VSBKTB305W (Wall Mount Bracket) + 24VAC/3A PSU	VSBKTB305W	VSBKTB305W + VSBKTA120	VSBKTB305W + VSBKTA140	VSBKTB305W + VSBKTA150	VSBKTA111 + VSBKTB300C + VSBKTA150	VSBKTA111 + VSBKTB300C + (+ VSBKTA112/13 optional extension)	VSBKTA111 + VSBKTB303S +

Your local VIP Vision™ IP solutions professional: