

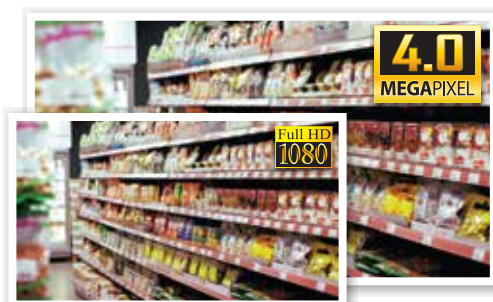


Compact HD surveillance.

Pinhole Series: Small profile cameras available in 2.0MP & 4.0MP

Designed for low profile surveillance applications, Pinhole Series cameras are ideal for controlled ingress points, in-shelf surveillance, in vehicles, ATMs & more. Two compact camera styles enable CCTV usage in difficult locations.

- Stream up to 2.0MP (2688 x 1520) at 25fps
- 2.8mm fixed lens with wide angle viewing
- Electronic day/night and 3D digital noise reduction
- Includes pinhole brackets and connector cables
- Discreet pinhole profile: Ø17mm / 5mm depth
- Face detection and 3D digital noise reduction
- True wide dynamic range (120dB)
- MicroSD slot up to 128GB (VSIPPH-4)





Double Full HD Resolution



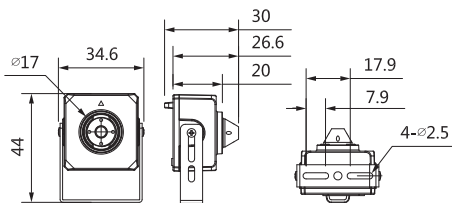
Discreet Ø17mm Camera Profile



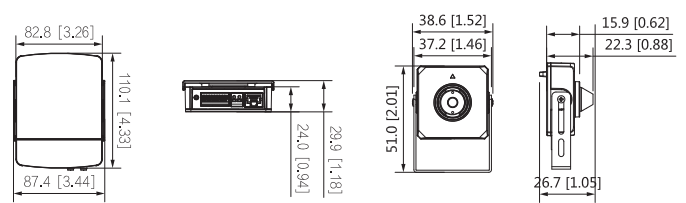
Edge Recording via MicroSD

Specifications		VSIPPH-2S3	VSIP4MPPH	
Model	Product Image			
	Ordering Information	VSIPPH-2S3: 2.0MP Pinhole Camera	VSIPPH-4M: 4.0MP Main Module VSIPPH-4L: 4.0MP Lens Module	
Camera	Image Sensor	1/3" 2.0 Megapixel Progressive Scan CMOS	1/2.7" 4.0 Megapixel Progressive Scan CMOS	
	Effective Pixels	1920 (H) x 1080 (V)	2688 (H) x 1520 (V)	
	RAM / ROM	128MB / 128MB	1GB / 128MB	
	Min Illumination	Colour: 0.01 lux@F2.0	0.005 Lux at F2.0 (Colour) / 0.0005 Lux at F2.0 (B&W)	
	S/N Ratio		> 56dB	
Infrared System		N/A		
Lens	Lens / Iris	2.8mm F2.0 Fixed Lens		
	Field of View	Horizontal: 96°, Vertical: 55°	Horizontal: 101°, Vertical: 57°	
	Focus	Fixed		
DORI Distance	Detect: 61m / Observe: 24.4m / Recognise: 12.2m / ID: 6.4m	Detect: 61m / Observe: 24m / Recognise: 12m / ID: 6m		
Video	Resolution	1080p (1920 x 1080) to CIF (352 x 288)	4.0MP (2688 x 1520) to CIF (352 x 288)	
	Frame Rate	Main	1080p (1 ~ 25/30fps)	4.0MP (1 ~ 25fps)
		Sub	704 x 576@ (1 ~ 25fps)	D1 (1 ~ 25fps)
		Third	N/A	1080p (1 ~ 25fps)
	Video Compression	H.265 / H.264 / MJPEG (sub stream)		
	Bit Rate	H.265: 3 Kbps ~ 6144 Kbps / H.264: 3 Kbps ~ 6144 Kbps		
	Bit Rate Control	Constant bit rate (CBR) / Variable bit rate (VBR)		
	Day/Night	Auto (Electronic) / Colour / B&W		
	Lighting Compensation	BLC / HLC / WDR (120dB)		
	Smart Scene Adaptive	N/A	Yes	
White Balance	Auto / Natural / Street Lamp / Outdoor / Manual			
Gain Control	Auto / Manual			
Noise Reduction	3D DNR			
IVS	Intelligent Functions	Tripwire, Intrusion, Motion Detection (4 Zone), Region of Interest (4 Zone), Privacy Masking (4 Zone)	Face Detection, Tripwire, Intrusion, Fast Moving, Loitering Detection, People Gathering, Parking Detection, Abandoned/Missing Object, Motion Detection (4 Zone), Region of Interest (4 Zone), Privacy Masking (4 Zone)	
	Ethernet	RJ45 (10/100 Base-T)		
Network	Protocol	IPv4; IPv6; HTTP; TCP; UDP; ARP; RTP; RTSP; RTCP; RTMP; SMTP; FTP; SFTP; DHCP; DNS; DDNS; QoS; UPnP; NTP; Multicast; ICMP; IGMP; NFS; SAMBA; PPPoE; SNMP	IPv4/IPv6; HTTP; HTTPS; SSL; TCP/IP; UDP; UPnP; ICMP; IGMP; SNMP; RTSP; RTP; SMTP; NTP; DHCP; DNS; PPPoE; DDNS; FTP; IP Filter; QoS; Bonjour	
	Streaming Method	Unicast / Multicast		
	Max. User Access	20 Users		
Interface	Video Interface	N/A		
	Audio Interface	1 Input / 1 Output (RCA)	1 Input, 1 Output (3.5mm jack) / Compression: G.711a; G.711mu; PCM; G.726; G.723	
	Alarm Interface	N/A	2 Inputs (5mA 3V-5VDC) / 2 Output (1000mA 30VDC / 500mA 50VDC)	
	RS232	N/A	1 Port	
	Edge Storage	NAS / Local PC	MicroSD Card (up to 256GB) / FTP / SFTP / NAS	
Interoperability	ONVIF Profile S / API	ONVIF (Profile S/Profile T) / CGI / P2P / Milestone / Genetec		
Environmental	Power Supply	12VDC	12VDC / PoE (802.3af)	
	Power Consumption	<1.2W (<1.56 max.)	Basic: 2.4W (12VDC), 3W (PoE) / Max. (AI + WDR): 3.9W (12VDC), 4.8W (PoE)	
	Operating Conditions	-40° ~ +60° C / ≤95% RH	-40° ~ +60° C / ≤95% RH	
	Ingress Protection		N/A	
	Vandal Resistance		N/A	
	Housing		Metal	
	Pan/Tilt/Rotation		N/A	
Dimensions	31mm x 31mm x 30mm	Camera: 35 x 35 x 27mm / Control Unit: 100 x 83 x 24mm		
Net Weight	0.138kg	0.21kg		

Application



VSIPPH-2S3



VSIPPH-4M / VSIPPH-4L

Your local VIP Vision™ IP solutions professional: