

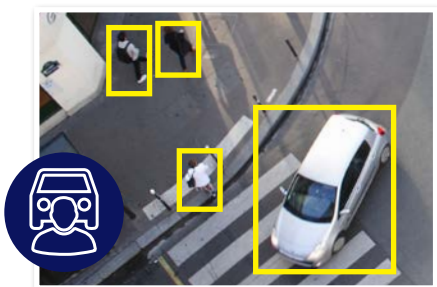


Upgrade to AI with Pro Series.

Professional Series: Artificial intelligence HDCVI DVR in 8, 16 and 32 channels

Transform your existing low-resolution surveillance system into an Ultra HD AI system with the Securview Professional Series. Upgrade coaxial based systems to HDCVI (high definition composite video interface) and gain access to AI functionality*, 4K recording at 7fps and cross compatibility for IP, analogue and other coax technologies. These DVRs are fantastic for existing coax cable system upgrades and for upgrades on a budget that wish to use existing cameras.

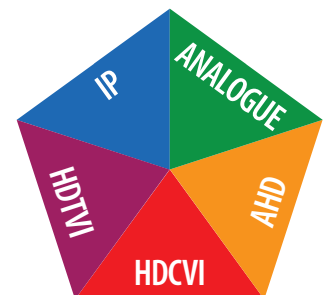
- Record up to 8.0MP (3840 x 2160) at 7fps (HDCVI)
 - Supports analogue, HDTV I and AHD camera inputs
 - Supports additional IP channels* via the network up to 8.0MP / 4K with up to 128Mbps incoming bandwidth
 - Up to 8 HDD bays for up to 128TB of footage storage
 - AI human/vehicle detection via motion by DVR
 - AI human/vehicle tripwire/intrusion by DVR
 - Allow/block access with AI face recognition
- *Addition of IP cameras disables the DVR's AI functions*
***IP cameras with built-in AI cannot use AI functions*



AI Human & Vehicle Detection



AI Face Detection & Recognition



Camera Cross Compatibility

Model	CVR8PRO5	CVR16PRO5	CVR32PRO5
General	Video Input 8 channel BNC		
	Coaxial: 8 channels up to 8.0MP/7fps (HDCVI), 960H/25fps (analogue)		
	Camera Configurations Network: Add 8 additional channels up to 8.0MP Max 128Mbps Incoming Bandwidth *Enabling IP channels disables AI / IVS functions		
	Main Processor / OS Embedded Processor, embedded Linux OS		
Remote View IOS (iPhone, iPad); Android devices			
Recording	Maximum Resolution 8.0MP (3840 x 2160) / 4.0MP (2560 x 1440) / 1080p (1920 x 1080)		
	Frame Rate Main: 8.0MP (1~7fps) / 6.0MP (1~10fps) / 5.0MP (1~12fps) / 4.0MP & 3.0MP (1~15fps) / 1080p (1~25fps) / Sub: 960H (1~15fps) / D1 (1~25fps)		
	Video Compression AI Coding / H.265+ / H.265 / H.264+ / H.264		
	Bit Rate 32Kbps ~ 6144Kbps Per Channel		
	Record Modes Manual / Schedule (Regular, Continuous) , Motion Detection (Video Detection, Motion Detection, Video Loss, Tampering), Alarm		
	Backup Modes USB Device / Network		
	HDD 2 x SATA bays, up to 16TB per bay		
Interface	Audio 4 channel input (RCA), 1 channel output (RCA)		
	Alarm Interface 8 channel input, 3 relay output		
	Types General (motion, video loss, scene change, etc.), Anomalies (camera disconnect, disk full, IP conflict , etc.), Intelligent (AI alerts, face, human/vehicle, etc.)		
	Actions Begin record, take snapshot, camera external alarm output, access controller, audio, buzzer, DVR log, camera preset, email		
	Display Input 1 x HDMI (up to 3840 x 2160), 1 x VGA (up to 1920 x 1080)		
	Split 1 / 4 / 8 / 9 (16 w/ IP extension mode enabled)		
	Network Input 1 x 1000Mbps Ethernet uplink		
Functions HTTP, HTTPS, TCP/IP, IPv4, RTSP, UDP, SMTP, NTP, DHCP, DNS, DDNS, P2P			
USB & Other Inputs 1 x Front USB 2.0, 1 x Rear USB 3.0 / 1 x RS-485			
Artificial Intelligence	Supported AI Functions Face Detection, Face Recognition, AI Human/Vehicle Detection (AI functions compatible with BNC channels only; AI using additional IP channels and in-camera AI functions are not supported)		
	Face Detection Function Gender, Age Group, Glasses, Expressions, Face Mask, Beard		
	Capacity 2 channels (up to 12 faces per second, per channel)		
	Face Recognition Function Supports up to 10 face databases and 20,000 face images		
	Capacity 2 channels		
Human/Vehicle Detection	Function AI Tripwire & Intrusion (IVS), AI Motion Detection (SMD)		
	Capacity IVS: 8 channels (general) / 2 channels (advanced) (10 rules per channel) SMD: 8 channels		
	IVS: 12 channels (general) / 6 channels (advanced) (10 rules per channel) SMD: 16 channels		
Environment	Power Supply 12VDC/4A		
	Power Consumption <10W (without HDD)		
	Operating Environment -10 ~ 55°C / 10 ~ 90%RH		
	Dimensions 375mm x 289mm x 53mm		
Application	Weight 1.6kg (without HDD)		
	Dimensions 		
Rear Panel 			

Your local Securview™ HDCVI solutions professional: