



www.vip-vision.com

MODEL: NVR8ENT(PACK)

Professional IP Surveillance Pack

Network Video Recorder with 8 Security Cameras

‘QUICK INSTALLATION GUIDE’



NVR

- *Advanced H.264 Video Compression Technology*
- *Multiplex Operation*
- *Long Recording Duration*
- *Intelligent Video Motion Detection Recording*
- *Remote Network Surveillance & Backup Functions*
- *Easy to operate with USB Mouse or IR Remote.*
- *System Auto recovery after power loss (blackout)*

8 x IP Day/Night Cameras

- *High Quality 1.3MP CMOS Image sensor*
- *IR Night view range of 20 metres*
- *720p Resolution*

In-Built POE Network Switch

- *Centralise your cameras away from your NVR*
- *Power and video over the same cable*
- *View over the internet via Smartphone or PC*




HDD NOTE:

This NVR is designed to only work with 24hr rated Enterprise, NAS and Video Surveillance Hard Drives. The use of any other model Hard Drive (including energy efficient drives) may cause your system to fail and void Warranty. NVRRO Packs come with an approved Hard Drive already installed.




We strongly recommend using the following Seagate Hard Drives:

Name:	Model:	Part Number:
Seagate 1TB Video HDD	ST1000VM002	HD1TBSN
Seagate 2TB NAS HDD	ST2000VN000	HD2TBSN
Seagate 3TB NAS HDD	ST3000VN000	HD3TBSN
Seagate 4TB NAS HDD	ST4000VN000	HD4TBSN
Seagate 1TB Surveillance HDD	ST1000VX001	HD1TBSV
Seagate 2TB Surveillance HDD	ST2000VX003	HD2TBSV
Seagate 4TB Surveillance HDD	ST4000VX000	HD4TBSV

NVR8ENT Package Contents (Before installation, please ensure you have all the parts listed below).

	<p>1 x Network Video Recorder with 2TB Hard Disk Drive</p> <ul style="list-style-type: none"> • Advanced H.264 Video Compression Technology for High Quality Images • Easy to Operate • Can be Connected to a PC Network for Remote Viewing & Backup (Software on Disc)
	<p>1 x USB Mouse</p> <ul style="list-style-type: none"> • To operate the NVR <p>1 x HDMI Connection Cable</p> <ul style="list-style-type: none"> • Connect the NVR to a HDMI ready TV or Monitor
	<p>1 x Switch Mode Low Voltage Power Supply</p> <ul style="list-style-type: none"> • 1 x 48V Power Supply to provide power to the NVR

Additional NVR8ENTPACK Contents (Only included when purchased as with the NVR8ENTPACK)

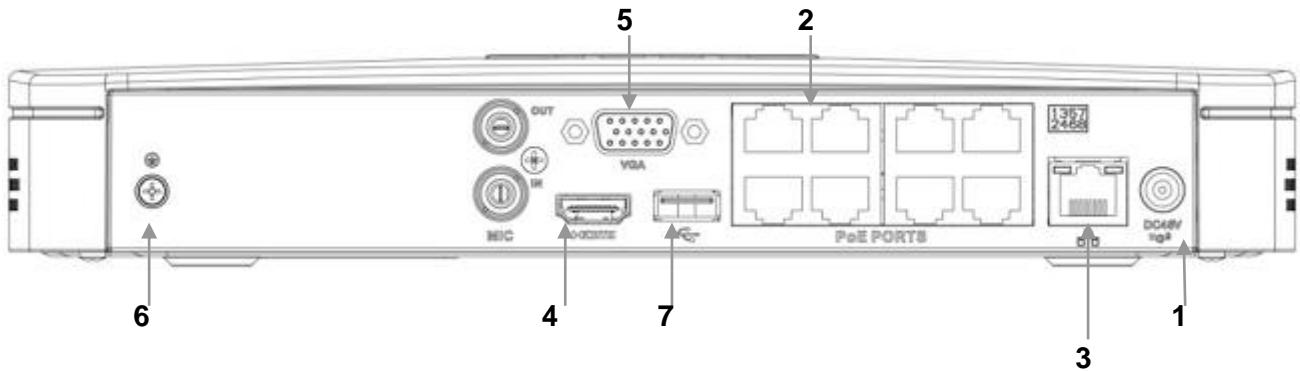
	<p>4 x Day/Night Weatherproof Bullet Cameras with Infrared LEDs - 20m Range</p> <ul style="list-style-type: none"> • IR LEDs for Viewing in Total Darkness up to 20m (B&W Mode) • 720p Resolution, 1.3 Megapixels • Ideal for use Indoors and Out • Power and video over one cable
	<p>4 x Day/Night Weatherproof Dome Cameras with Infrared LEDs - 20m Range</p> <ul style="list-style-type: none"> • IR LEDs for Viewing in Total Darkness up to 20m (B&W Mode) • 720p Resolution, 1.3 Megapixels • Ideal for use Indoors and Out • Power and video over one cable
	<p>5 x Ethernet Cables</p> <ul style="list-style-type: none"> • Pre-terminated - Allowing Simple Plug-in Connection – No Tools Required • 1 x 1.5m, 2 x 10m, 1x 20m, 1 x 30m Leads Supplied

Installation

Before installing this unit, please read through the following points:

- Do not place cords where they can be pinched or stepped on.
- Leave at least 50mm of space between the NVR and other objects to allow air circulation.
- Do not expose the NVR or Cameras to excessive heat, cold, or moisture.
- Never immerse any component in water, and do not spray cleaners or solvents on the unit. Unplug units before cleaning. When cleaning, use a damp, lint-free cloth only.
- Do not place heavy objects on cords, or cover cords with rugs or carpet.
- Service should be handled only by qualified technicians.

Rear Panel

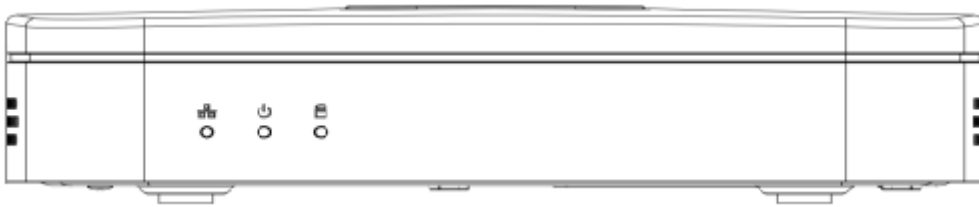





1	“DC48V”	Connect to 48V power supply.
2	“POE PORTS”	Powered Ethernet ports to connect to supplied cameras.
3	“WAN PORT”	Connect to Network/Internet for remote monitoring.
4	“HDMI”	Connect to Digital Monitor with supplied HDMI cable.
5	“VGA”	Connect to monitor using VGA cable. (Not Supplied)
6	“GROUND”	Ground point.
7	“USB”	Connect to USB Mouse

Connection Guide

1. Mount the 8 Cameras as required and connect them to the in-built POE Network Switch using the supplied Network Cables.
2. Connect the **48V Power Supply** to the NVR.
3. Plug the power supply into a Power-point.
4. Switch NVR on. Hold Power button for 3 seconds.
5. The power LED at the front of the NVR should now be illuminated and the unit will make a loud beep sound to indicate it is powered.
6. Connect the included mouse to the USB port on the front or back..
7. Connecting your local network or modem to the LAN Port of the NVR (we recommend doing this last step after all the cameras have been configured).





Front Panel

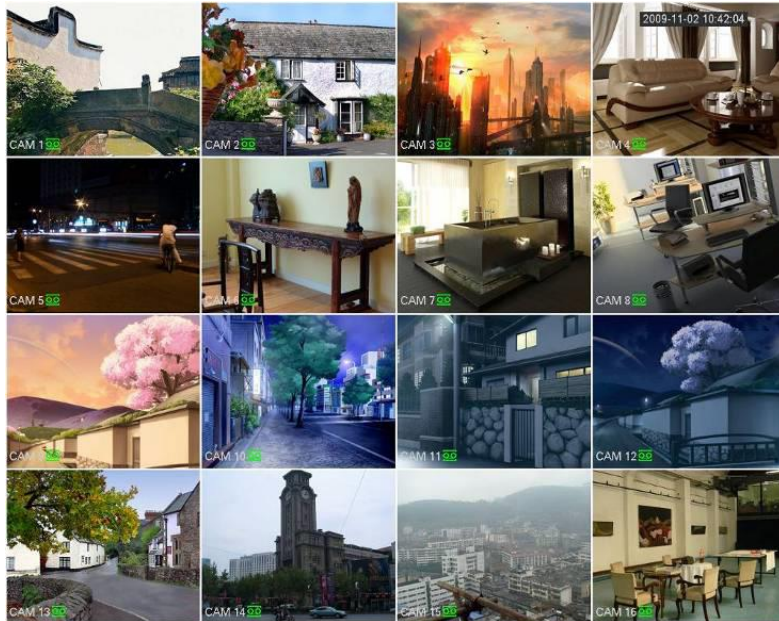


	Power indicator light	The blue light becomes on when the power connection is OK.
	Network status indicator light	The blue light becomes on when the network connection is abnormal or offline.
	HDD status indicator light	The red light becomes on when HDD is abnormal or HDD space is below the threshold.

Main Screen

Once booted, you will be presented with the screen below (camera may only be black if not yet set up). Each camera view will have one or more symbols from below:

1		Currently Recording	3		Video Loss
2		Motion Detected	4		Camera Lock



***NVR8ENTPACK only supports eight cameras.**

System Menu

- Right Clicking will bring up the System Login screen and the onscreen keyboard.
- Once Logged In, right clicking again will bring up a menu.
- Selecting "MAIN MENU" will show the system menu.
- Right click or press the ESC button to return to previous menus, click on the icon to enter menus.

Channel View Menu

Moving the mouse to the top of each channel in the live view screen will show a menu.

From left to right:

- Playback: Show, in live view, the past few minutes of footage.
- Search tag: Turn on search tag.
- Save: Save the currently displayed file to USB device.
- Camera Source: Change the IP Device for this feed.
- Close: Close the channel view menu.

Default:

The default username is **admin**, the password is also **admin**.

On the NVR physically, you may also use username of **888888**, and the password **888888**.

(Users can alter the password later. Please refer to the Advanced set up guide CD)

Set the Time and Date

When using your NVR for the first time, you will have to set the SYSTEM TIME.

- Right clicking anywhere on the screen will bring up the password menu. Use the mouse to enter the NVR admin password with the on-screen keypad.
- Then Right click to open the menu and select “MAIN MENU”.
- Select “SETTING”
- Select “GENERAL”
- Set System Time, Date Format and DST (Daylight Saving Time) for your region.
- **Click Save before clicking OK**

Important:

If you change the date or time on your NVR after the recording function is activated, the recorded data may be deleted. After setting the date and time, it's recommended to clear all HDD data, and start recording again.

The screenshot displays the NVR web interface's 'SETTING' menu, specifically the 'Date & Time' configuration page. The interface is dark-themed with a blue sidebar on the left containing various system settings like CAMERA, NETWORK, EVENT, STORAGE, and SYSTEM. The 'SYSTEM' menu is active, and the 'Date & Time' sub-menu is selected. The main content area shows the following settings:

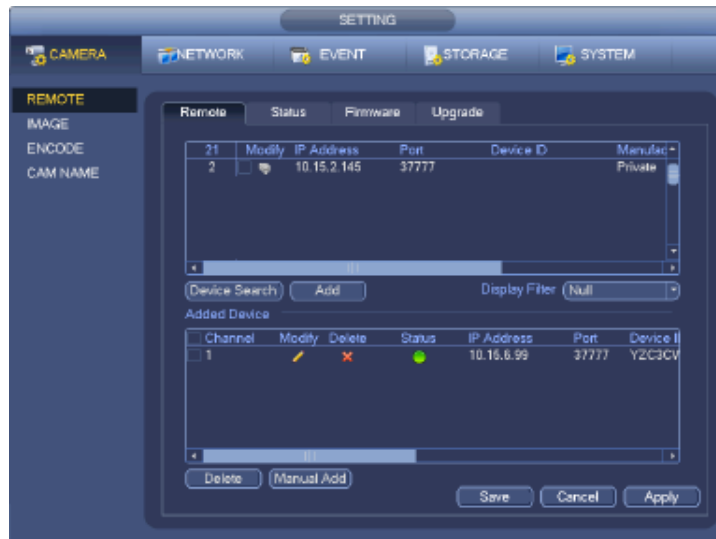
- General** (selected), **Date & Time**, and **Holiday** tabs.
- Date Format:** YYYY MM DD (dropdown)
- Time Format:** 12-HOUR (dropdown)
- Date Separator:** - (dropdown)
- System Time:** 2013 - 10 - 25 05 : 02 : 17 PM (input field)
- Time Zone:** GMT+08:00 (dropdown)
- Save** button
- DST:** DST
- DST Type:** Day of Week, Date
- Start Time:** 2000 - 01 - 01 12 : 00 AM (input field)
- End Time:** 2000 - 01 - 01 12 : 00 AM (input field)
- NTP:** NTP
- Server IP:** time.windows.com (input field)
- Manual Update** button
- Port:** 123 (input field)
- Interval:** 60 min (input field)
- Default**, **Save**, **Cancel**, and **Apply** buttons at the bottom.

To Connect Cameras

NOTE:

The NVR is designed to automatically configure the IP cameras which are camera connected to the dedicated POE Ports on the back of the device. However you can still manually add the cameras when they are connected via the local LAN.

- Right click to open the menu and select “MAIN MENU”.
- Select “SETTING”
- Select “REMOTE DEVICE”



Adding Cameras that are not on the Inbuilt POE Ports:

1. Click Device Search, this will list all cameras connected in the upper panel.
2. Click on the camera you wish to connect and click 'Add'

Manual Adding Cameras that are not on the Inbuilt POE Ports:

1. Click Manual Add
2. Enter the information about the camera, if you do not know this information, you must manually setup the camera on another network before connecting.



To Set Up Recording Rates

Record Times:

The NVR8ENT(PACK) system is capable of storing up to 2 weeks of recorded footage based on 2Tb of storage and the 8 included 1.3MP Cameras set to 720P @ 10fps and CBR @ 1536kb/s

Right click to open the menu and select MAIN MENU, then select SETTINGS followed by CAMERA and finally ENCODE.



Here you may set individual encoding options for **Regular**, **Motion Detect** and **Alarm** Recording. While any of the cameras may be set higher, please be aware that it will reduce the total recording time to less than 2 weeks. We recommend:

1MP cameras: Set to **H.264** with a **1280x720** resolution, **10fps**, Bit Rate **CBR of 1536kbps**.


2MP cameras: Set to **H.264** with a **1920x1080** resolution, **10fps**, Bit Rate **CBR of 2048kbps**.

3MP cameras: Set to **H.264** with a **2048x1536** resolution, **10fps**, Bit Rate **CBR of 4096kbps**.

Important: The EXTRA STREAM MUST be enabled if you wish to remote access the NVR system.

All cameras: Set to **H.264** with a **CIF** resolution, **10fps**, Bit Rate **CBR of 320kbps**.

To Begin Recording

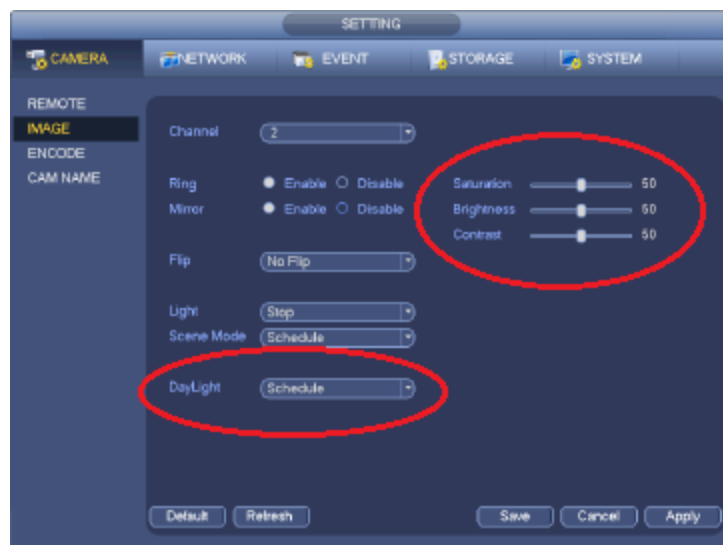
Once you have successfully set up the cameras, exit the Menu by right clicking or pressing the CLOSE button. By default, the NVR will begin recording when it is properly connected to the cameras and has an installed HDD. If it is recording, the recording icon “” will be displayed on screen.

Automatic Overwriting:

When the system is in full, the oldest recorded data will be overwritten automatically. **This NVR System is set to Overwrite by factory default but this can be changed in the “GENERAL” Menu.**

To Set a Cameras Colour Settings

1. Right click to open the menu and select MAIN MENU, then select SETTINGS followed by CAMERA and finally IMAGE.



2. Here you can adjust the IP Cameras Colour, Gain, BLC, WDR and Day/Night.

Please ensure that Day/Night is always set to Auto. Failing to do so could mean the Cameras are unable to see at night, or become stuck in black/white during the day.

Motion Detection

Should you wish to use Motion detect recording, it can be set per camera, per time period and to detect in certain portions of the screen.

- Right click to open the menu and select “MAIN MENU”.
- Select “SETTING”
- Select “EVENT”
- Select “VIDEO DETECT”
- Select channel from Channel drop down
- Check the Enable box
- **Ensure Record Channel is checked, and a Region has been selected.**
- Click **Save**.

More Settings:

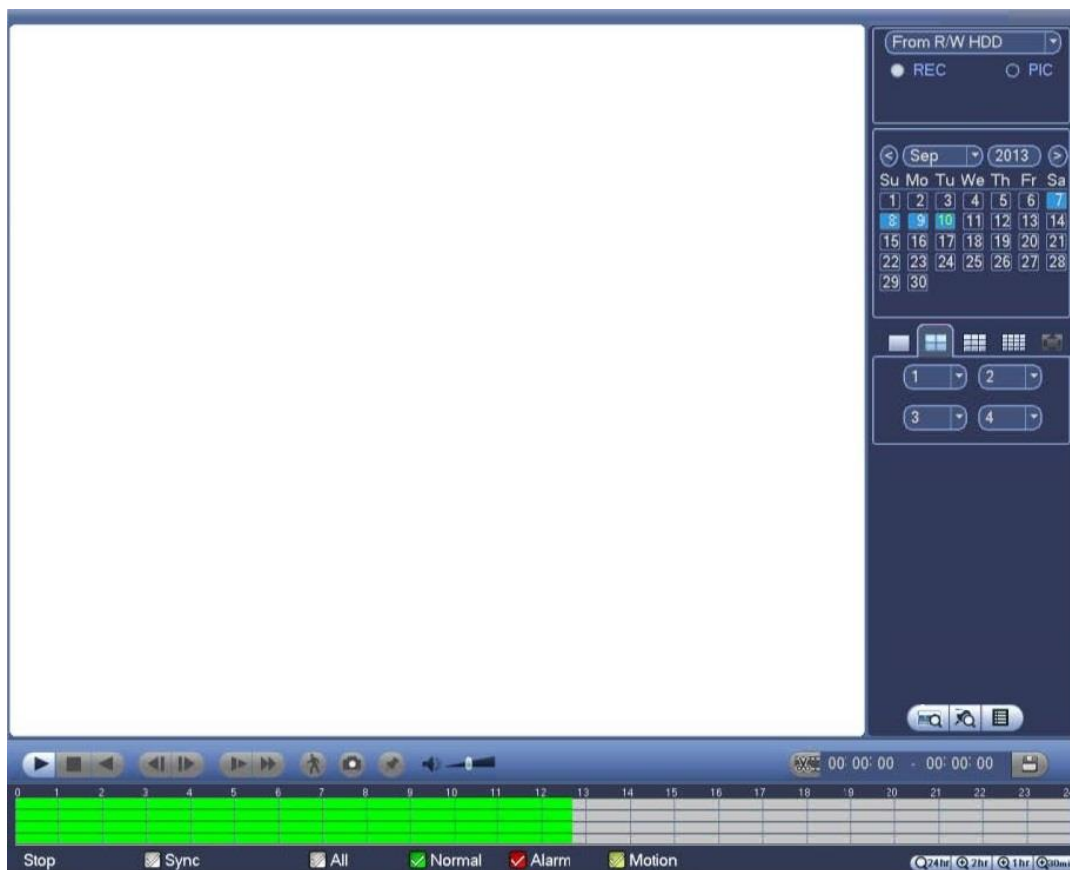
Latch	Time to wait after motion is detected, before checking for motion again.
Region Select	Select region of feed within which motion detection will occur. Click and drag with the mouse to arm/disarm areas of the feed. Motion detected in red areas will cause recording, motion will not be detected in grey areas. Press “ ENTER ” to save.
Sensitivity	Select from 1 to 6 the sensitivity of the recording, 6 being the most sensitive to movement.

- Right click to open the menu and select “MAIN MENU”.
- Select “SETTING”
- Select “SCHEDULE”
- Select a channel.
- Choose a period and set the time options to the period you wish to motion record, bearing in mind system uses **24 hour time**.
- Check **MD** for this period.
- Click **OK** to save.



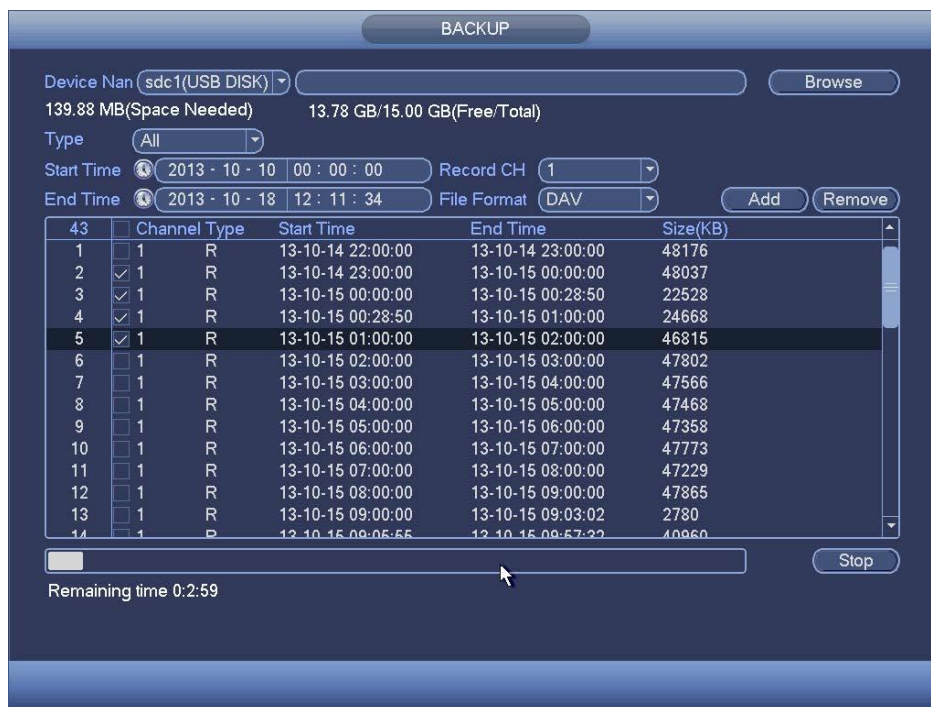
How to Playback Video Footage on your NVR

1. Right click anywhere on the screen to bring up the menu and log on. Use the mouse to enter the NVRs admin password “888888” with the on-screen keypad.
2. Once logged in you can left click to open the menu and select SEARCH.
3. You will now see the NVR search screen. On the right hand side there is a calendar in which you can select the month and day you wish to playback. Any date that is highlighted blue has video available to playback.
4. Once you have selected the day, you can choose which cameras you wish to playback, and the mode in which they will be displayed (1ch, 4ch, 8ch, 16ch at a time).
5. Finally you can select the time from the time bar at the bottom of the screen. You will notice that the hours are listed from 00:00 to 24:00. Simply clicking on the bar will display the video footage from that time. A green bar will indicate that there is video available at that time.



How to Backup Video Footage on your NVR

1. Right click anywhere on the screen to bring up the menu and log on. Use the mouse to enter the NVRs admin password “888888” with the on-screen keypad.
2. Once logged in, you can now left click to open the menu, select MAIN MENU then BACKUP.
3. You will now see the NVR Backup Devices where you can choose the device you wish to backup to. Choose your device and click BACKUP to continue.
4. You will see the NVR Backup screen where you can choose the Camera Channel, followed by the Start and End times for the section of video you wish to backup. Click ADD to save your selection, and repeat process for any addition video footage you wish to back up.



5. Once you have selected all the video to be backed up, press Start to begin the transfer process.

In order to backup Video Footage from your NVR you will first require a USB Stick or USB Hard Drive (we strongly recommend having a FAT32 file system).

Using a PC to find available IP Addresses (optional)

Before setting up your NVR you will first need to find it an IP address. This process is to help you find what IP Addresses are currently in use on your computer network, and in turn which ones are still available. If you are not connecting the NVR to a computer network (or internet connection) then any default IP address range may be used. e.g. 192.168.0.100 to 192.168.0.130.

We recommend 192.168.0.100

Before starting you must first have a copy of the “Free IP Scanner” Tool which can be downloaded here: http://downloads.rhinoco.com.au/dvr/Free_IP_Scanner.zip

1. Open the Free IP Scanner Tool (if it asks for registration just press skip as it is free to use).



2. Begin the scan by clicking on

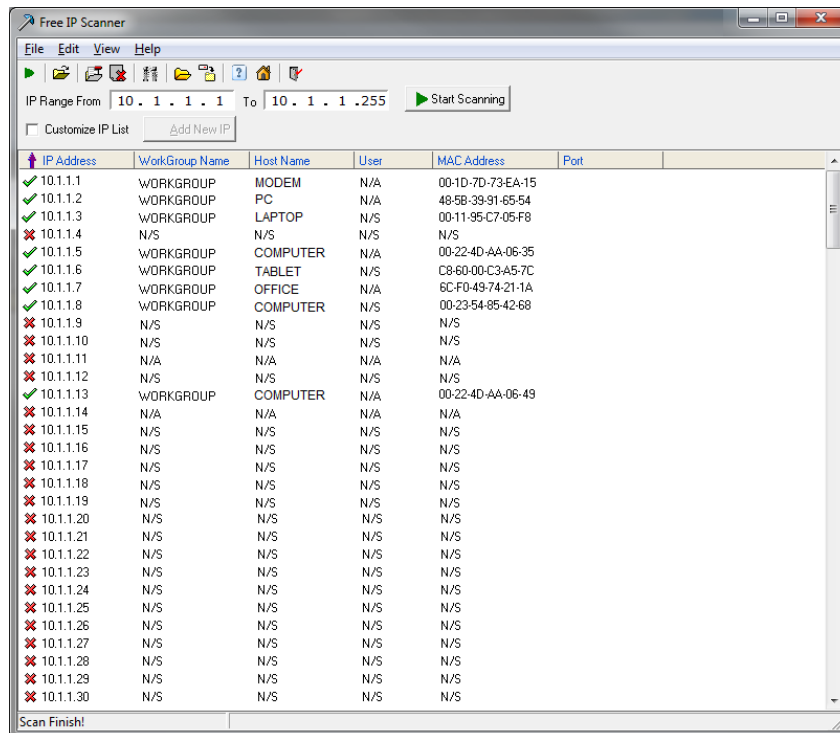
3. The “Free IP Scanner” will automatically detect all IP Addresses on your Computer network and display which ones are in use by listing with a Green tick beside them.

✓ 10.1.1.2 WORKGROUP PC N/A 48-5B-39-91-65-54

Those which have a red cross beside them are not currently in use and may be available.

✗ 10.1.1.100 N/S N/S N/S N/S

Note: Even though lower numbered address may be free (such as “?.?.?.8”) we recommend using higher number which are unlikely to be used in the immediate future such as “?.?.?.100” onwards.



4. If you wish to Export the list, you can do this by going to FILE and choosing EXPORT. It can then be saved as text file and even emailed.

Set Up the NVRs Networking

Right click to open the menu and select MAIN MENU, then select SETTINGS followed by NETWORK.

The device comes pre-configured to DHCP (which means it will automatically receive an IP Address). If you wish to manually give it an IP Address, un-tick DHCP and then enter the IP Address, Subnet mask, and Gateway.

In this example we have used 192.168.0.100



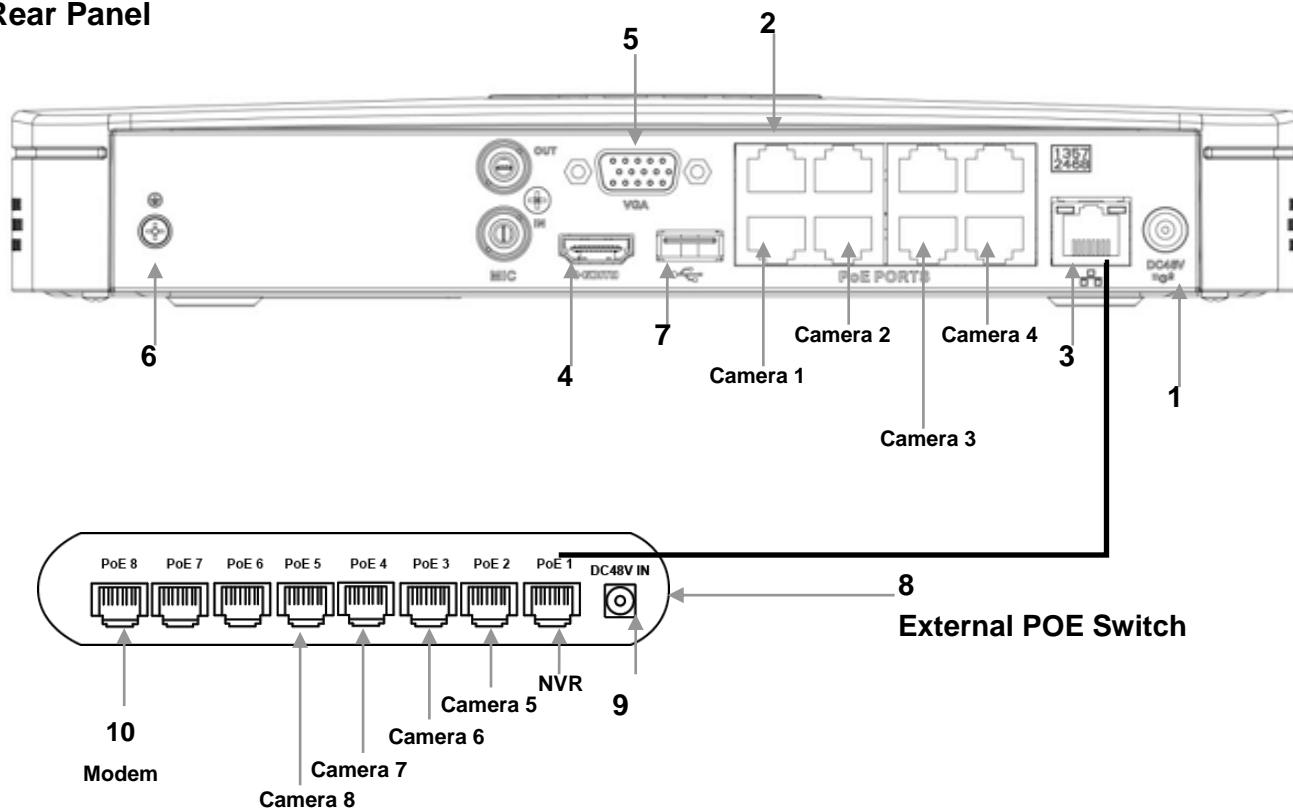
The inbuilt POE Switch uses a different IP address range that will in no way affect your network or the NVR. This can be found under NETWORK SETTINGS and then double clicking on SWITCH SETTINGS. While these settings can be changed we strongly recommend leaving it at its default configuration:

IP Address: 10.2.2.2
Subnet Mask: 255.255.255.0
Gateway: 10.2.2.1

How to use an external POE Switch NVR (optional)


Installation with external POE Switch

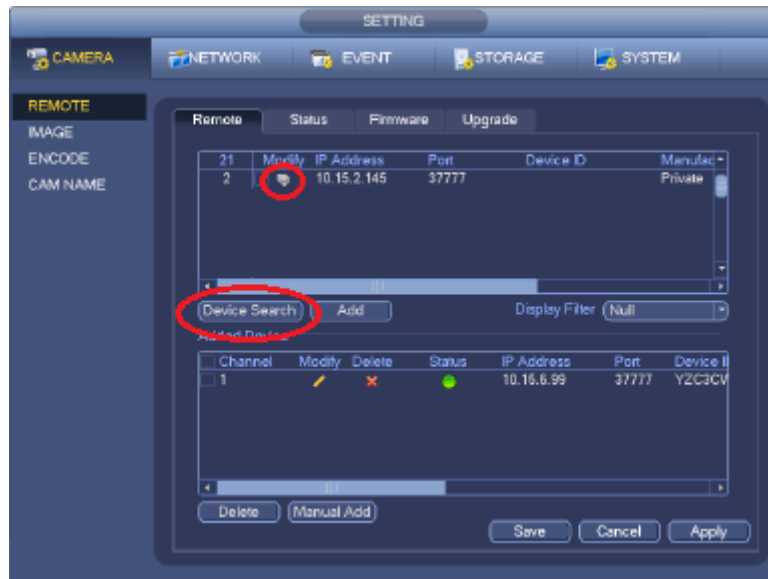
Rear Panel




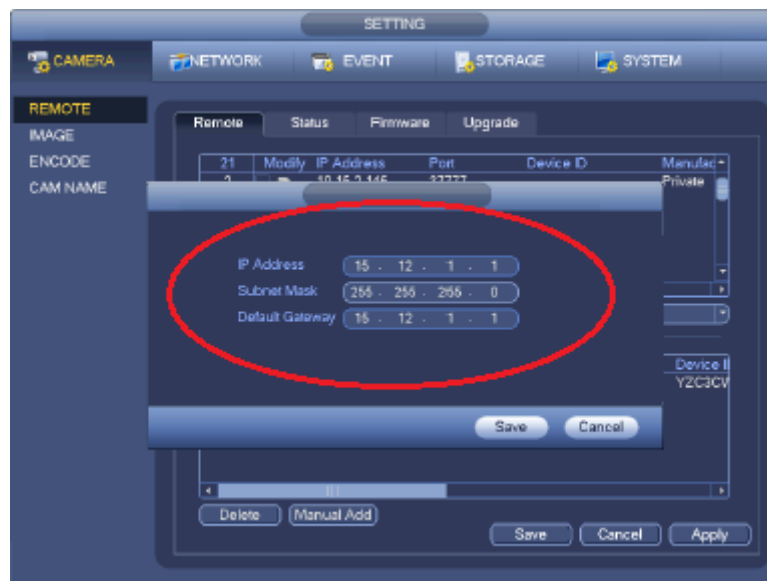
1	“DC48V”	Connect to 48V power supply.
2	“POE PORTS”	Connect IP Cameras here.
3	“WAN PORT”	Connect to Network/Internet for remote monitoring.
4	“HDMI”	Connect to Digital Monitor with supplied HDMI cable.
5	“VGA”	Connect to monitor using VGA cable. (Not Supplied)
6	“GROUND”	Ground point.
7	“USB”	Connect USB Mouse.
8	External POE Switch	Connect manually added IP Cameras here.
9	POE Switch Power	Connect 48V POE Switch Power here
10	Modem	Connect to your modem or LAN

Using the NVR to manually set the IP Address of an IP Camera (optional)

1. Right click to open the menu and select MAIN MENU, then select REMOTE
2. Click DEVICE SEARCH  to begin scanning for all the attached IP Cameras.

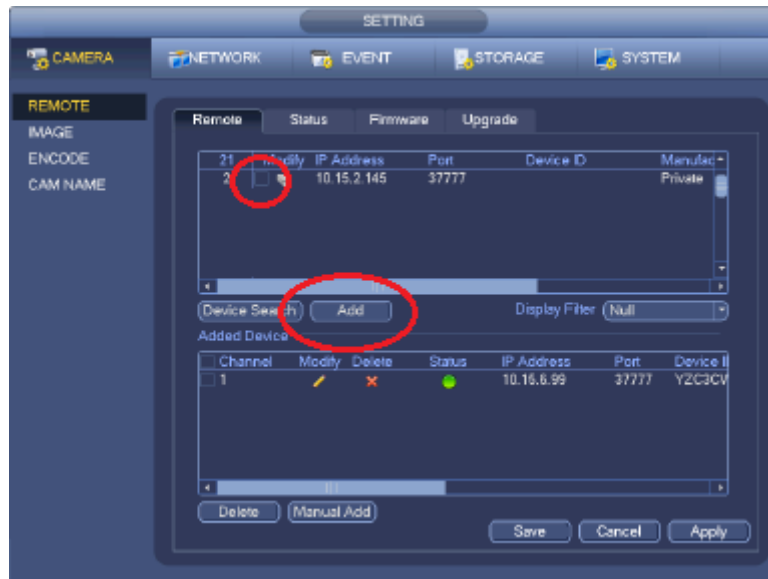


3. The NVR will find your new IP cameras (normally with a default IP Address of 192.168.0.108). You can then click on the IP Cameras Edit button  to change its IP Address.



4. Change the IP Cameras IP Address, Subnet mask, and Gateway to the new IP address range. Then click Ok to save. The camera IP Address must be in the same range as your NVR. *In this example we have used 192.168.0.101*

- The IP Camera should now be listed with its new IP Address. You can then tick the new camera you wish to connect and click 'Add' to have it connect to the NVR.



- The IP Camera will now be shown in the bottom list meaning it has been successfully added to the NVR.



- This process can now be repeated for any additional cameras.

Simple Configuration of your NVR for Remote Access by QR code

To be able to set your NVR up for Remote Access, you will first require:

- An ADSL internet connection of 512/512 minimum (ADSL2 or NBN recommended).
- A network cable between your NVR and your Modem.
- An iPhone with the iDMSS App or an Android smartphone with the gDMSS App.

Once you have these you can proceed to set up the Remote Access by:

1. Connect your NVR to your Modem by a network cable.
2. Under Main Menu > Settings > Network.
Enable DHCP or enter your local network address information.
3. Exit to save.
4. Now go to Main Menu > Settings > Network > P2P
Tick the box for P2P.
Then double Click P2P to open up the sub menu.



5. Ensure "Enable" is ticked. Then Click Save to exit.
6. You can now set up the DMSS Mobile App by QR Code.

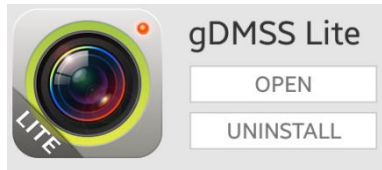
DMSS Mobile App by QR Code

App available for Android, iOS, Blackberry, Symbian, Windows Mobile and Windows 7 mobile

From your compatible Smartphone, access the App Marketplace and download the free App. This may also be listed as:

iDMSS lite for Apple iOS
gDMSS lite for Android
wDMSS lite for Windows Phone
DMSS lite for others

iDMSS plus for Apple iOS
gDMSS plus for Android
wDMSS plus for Windows Phone

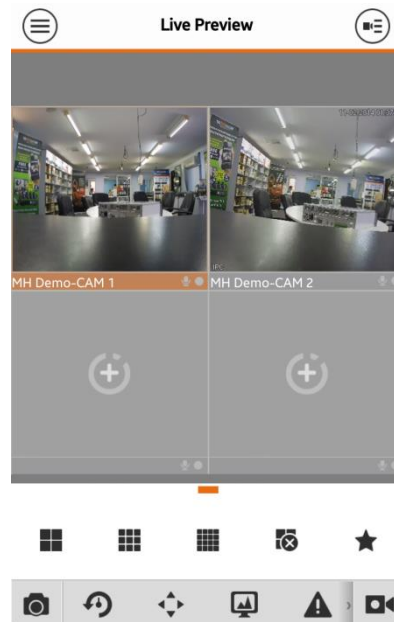
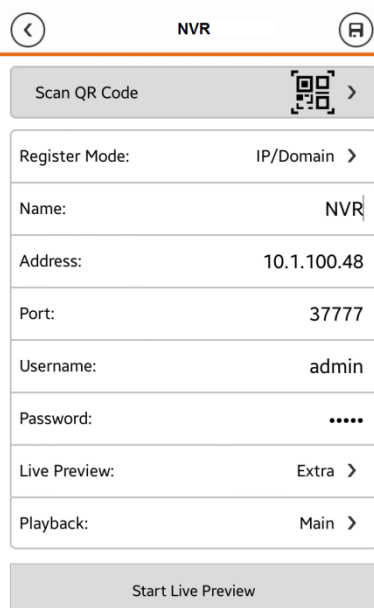


Configuration:

1. On your NVR go to **Main Menu > Settings > Network > Network Settings**.
Tick the box for P2P. Then double Click P2P to open up the sub menu.
2. On your Smartphone go to “**MENU**” ☰ then “**Device manager**” and select “**ADD**” ⊕.
3. Set “**Register Mode**” to “**P2P**”
4. You can now click “**Scan QR Code**” and use your phone to scan the code on your NVR.



5. Enter in your devices **NAME**.
6. Enter your **Username / Password** and the set Live Preview and Playback to “**Extra**”.
7. You can now select “**Start Live Preview**” to save and test the connection to the NVR.
8. In the future, you can connect to your system directly from the main screen by tapping the “**DEVICE LIST**” ☰ then ticking your NVR and selecting the “**Start Live Preview**” to connect.



Advanced Configuration of your NVR for Remote Access by IP Address (optional)

Important: Before Setting up remote access for your NVR, you will need a good understanding of computer networks. If you do not, please seek the assistance of a qualified I.T. professional.

To be able to set your NVR up for Remote Access, you will first require:

- An ADSL internet connection of 512/512 minimum (ADSL2 or NBN recommended).
- An ADSL Modem which supports Port Forwarding (such as Sapido, D-link or Netgear).
- An “External static IP address” from your Internet Service Provider.
- An “Internal Static IP address” from your Modem.
- A network cable between your NVR and your Modem.
- A windows PC on your network to configure your modem.

Once you have these you can proceed to set up the Remote Access by:

1. Give your NVR the internal IP Address.
2. On the NVR change port 80 to port 88.
3. Ping the NVR from a local computer to ensure it is reachable on your network.
4. Port forward ports **88, 37777, 37778, 554** in the modem, to the “Internal IP address” of the NVR.
5. You should then be able to test the connection to the NVR over the internet from a different internet connection (or mobile on 3G).

Test your Remote Access by connecting to the NVR:

When you are in the same building as the NVR you will be able to connect via WIFI and use the “Internal IP address” of the NVR. However when you are not where the NVR is and wish to connect via the internet or 3G, you would use the “External static IP address” given to you by your Internet Service Provider.

Port forwarding support:

There are many different brands and models of ADSL Modems which makes them difficult to set up, this is why we must recommend an IT professional. Some manufacturers offer guides on their websites or alternatively we can recommend Third-party assistance on configuring port forwarding from sites such as: www.portforward.com

When using more than one NVR on a site:

Should you have more than one NVR on site it may be necessary to set the second machine to a different set of ports. For example set NVR 1 to port 88 and then NVR 2 to port 89.

Set up DDNS on your NVR (optional)

DDNS is a service that will track your numeric IP address and allow you to attach an alphanumeric address. So for example, instead of using "123.123.123.123" (the Google address) you would use "google.com".

Why use DDNS?

Remembering a numeric IP address can be complicated, where an alphanumeric address is easy to remember. The other main advantage for DDNS is If you have a dynamic ip address, (where your address can change monthly) the DDNS service will track and update with your new IP address automatically. So no matter what your numeric ip address is, your alphanumeric address will work. There are free and paid services available, however a free DDNS service has been built in to these NVRs. This tutorial will go over how to set up your NVR to use the free DDNS service.

How to enable your DDNS?

In order to set up DDNS on your NVR, you will need to enable the DDNS service in the Network settings. MENU > SETTING > NETWORK > NETWORK SETTING > DDNS (double click).

Set DDNS Type to "Private DDNS" and Tick ENABLE

SERVER IP to www.dahuaddns.com

DOMAIN MODE to "Default Domain"

DOMAIN NAME is your unique <MAC address>.dahuaddns.com

Username is left Empty

Now when trying to connect externally you would now use the CURRENT HOST ADDRESS instead of the internal IP address.

e.g. <MAC address>.dahuaddns.com

(Note: This is also dependent on Port forwarding being set up in your ADSL modem. Please use the default unique ID not <MAC address> as it is just an example).



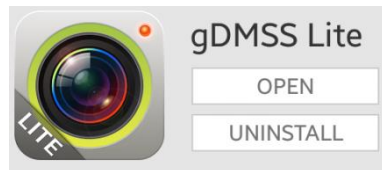
DMSS Mobile App by IP Address (optional)

App available for Android, iOS, Blackberry, Symbian, Windows Mobile and Windows 7 mobile

From your compatible Smartphone, access the App Marketplace and download the free App. This may also be listed as:

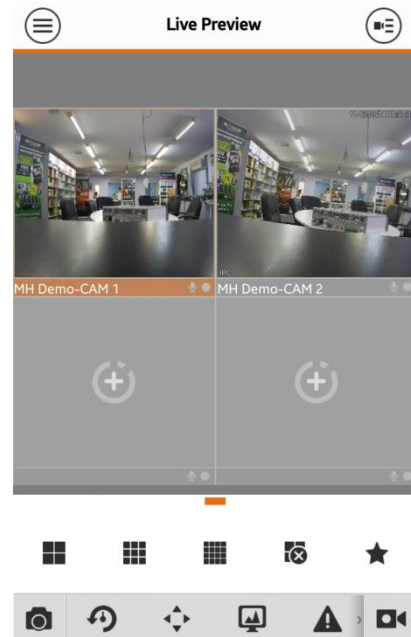
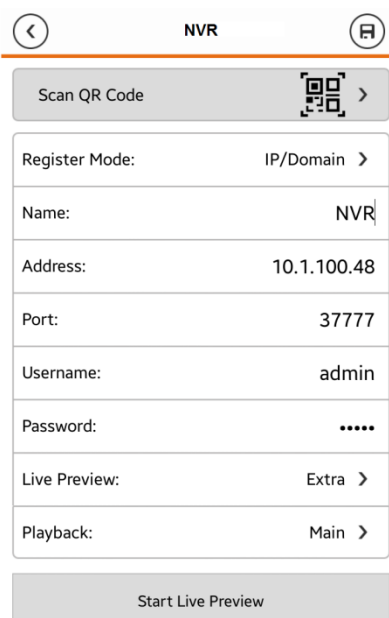
iDMSS lite for Apple iOS
gDMSS lite for Android
wDMSS lite for Windows Phone
DMSS lite for others

iDMSS plus for Apple iOS
gDMSS plus for Android
wDMSS plus for Windows Phone



Configuration:

1. Go to **"MENU"** (☰) then **"Device manager"** and select **"ADD"** (+).
2. Set **"Register Mode"** to **"IP/DOMAIN"**
3. Enter in your devices **NAME, IP Address** or DDNS and TCP **Port** (default is 37777).
4. Enter your **Username / Password** and the set Live Preview and Playback to **"Extra"**.
5. Select **"SAVE"** (💾) in the top right corner or **"Start Live Preview"** to save and connect.
6. You be returned to your Live View screen where your camera feed will now be displayed.
7. In the future, you can connect to your system directly from the main screen by tapping the **"DEVICE LIST"** (☰) then ticking your NVR and selecting the **"Start Live Preview"** to connect.



How to enable Push notifications (optional)

In order to receive Push notifications from your system, you will need to have the Recorder set up and working by remote access. You will also require the Paid version of the mobile app.

iDMSS plus for Apple iOS

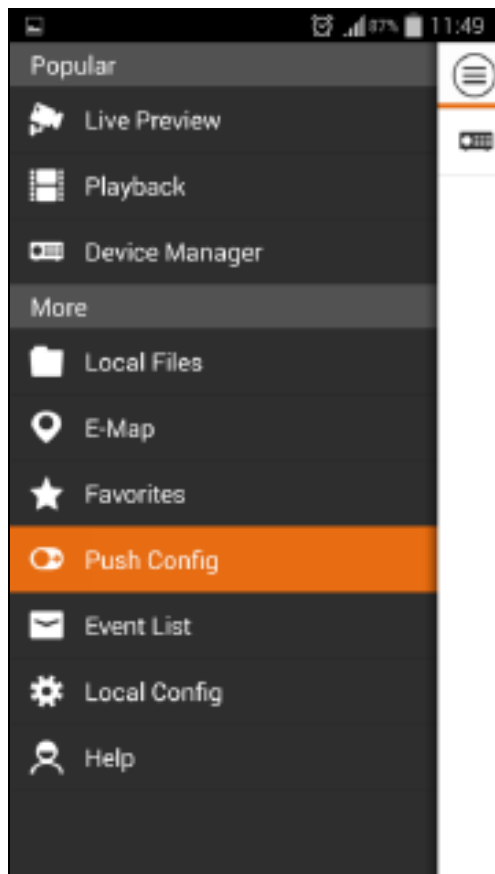
gDMSS plus for Android

wDMSS plus for Windows Phone

DMSS plus for others

Configuration:

1. Open the paid mobile app where you have remote access already set up.
2. Go to “**MENU**” ☰ then “**Push Config**”.
3. Choose your Recorder from the list and switch Push Notifications to “**ON**”.

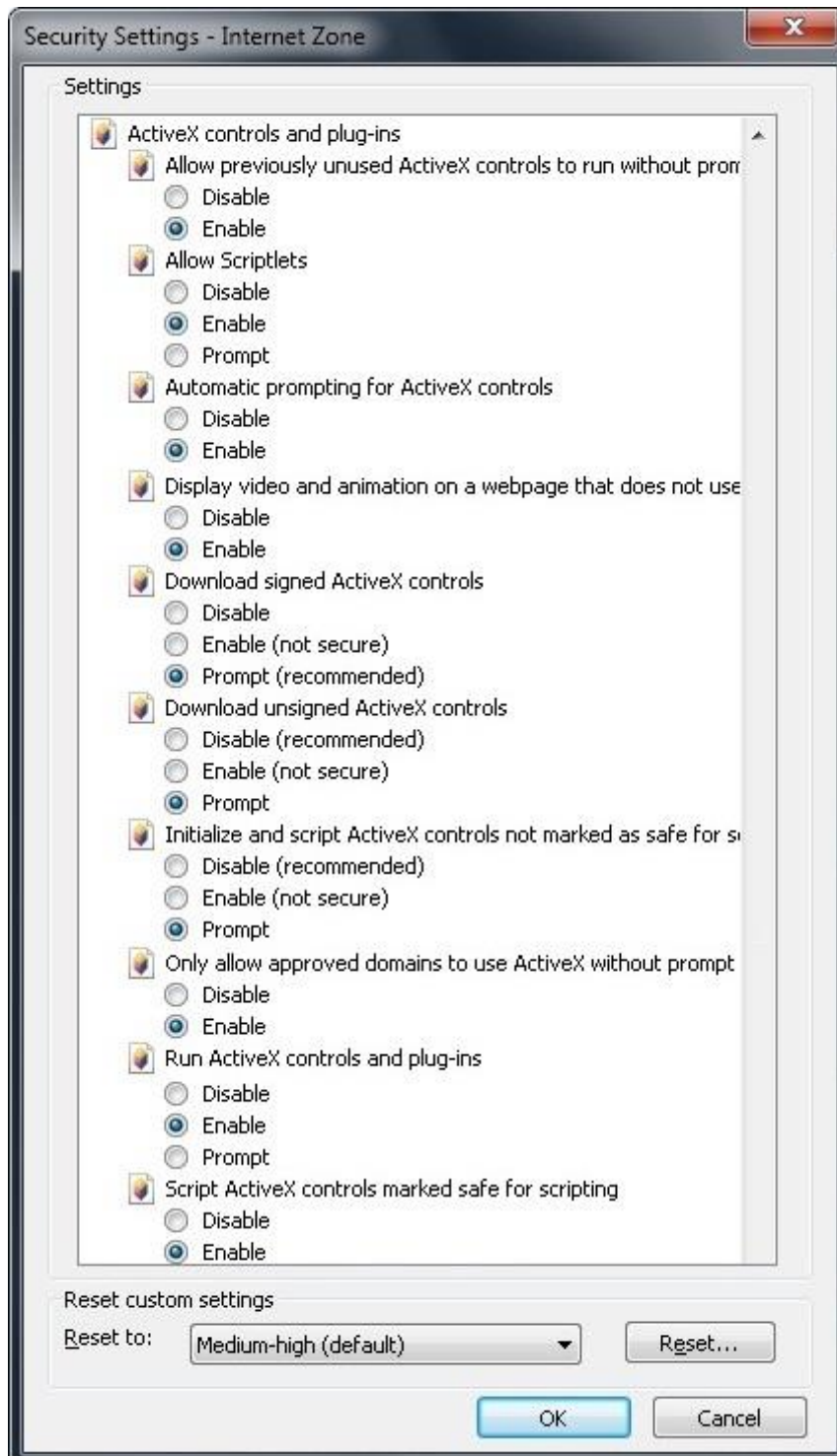


How to enable ActiveX Controls in Internet Explorer (optional)

Important: Before Setting up remote access for your NVR, you will need a good understanding of computer networks. If you do not, please seek the assistance of a qualified I.T. professional.

We can only recommend using ActiveX Internet Explorer 5.5 or above, and strongly recommend the use of IE9 as unfortunately IE10 is not compatible.

To enable ActiveX controls go to: Tools > Internet Options > Security > Custom Level > Then once in the Security Settings, enable all ActiveX related options. Please see the settings below:



Troubleshooting

Please refer to the FAQ table below for easy troubleshooting. The table below describes some typical problems and their solutions. Please consult these guides before contacting your NVR dealer.

PROBLEM	SOLUTION
No power	<ul style="list-style-type: none">- Check power cord connection.- Confirm that there is power from the outlet.- Ensure that 48V is connected to the NVR
Motion Detection not working	<ul style="list-style-type: none">- Ensure that motion detection is enabled for that channel in the "DETECT" menu.
No live video	<ul style="list-style-type: none">- Check the cameras cable and connections.- Check the monitors cable and connections.- Ensure you are not in playback mode.- Check that there are no cameras set to 3MP.- Ensure that the 48V power supply is connected to the NVR and the switch is turned on.
No video over the network with web browser or mobile	<ul style="list-style-type: none">- Make sure that Extra Stream is enabled for each camera.
No recorded video	<ul style="list-style-type: none">- Check if the HDD is installed and connected properly.
NVR keeps rebooting	<ul style="list-style-type: none">- Ensure that 48V is connected to the NVR
HDD detection failed	<ul style="list-style-type: none">- Ensure that 48V is connected to the NVR
Can't detect your USB flash drive	<ul style="list-style-type: none">- Use another USB flash drive to test.- Ensure it is formatted to FAT32.- Check Appendix B of User manual (on CD).
Can't view the NVR images over the network with web browser	<ul style="list-style-type: none">- Ensure you have installed the ActiveX- Check Section 8 of User manual (on CD).

This guide is intended as a Quick Set Up and Basic use manual only, please refer to the User Manual on the included CD for all other details.

Limited Warranty

Cornick Pty Ltd (Seller) warrants its products to be in conformance with its own plans and specifications and to be free from defects in materials and workmanship under normal use and service for twelve months from the date of original purchase. Sellers obligation shall be limited to repairing or replacing, at its option, free of charge for materials or labor, any part which is proved not in compliance with Sellers specifications or proves defective in materials or workmanship under normal use and service. Seller shall have no obligation under this Limited Warranty or otherwise if the product is altered or improperly repaired or serviced by anyone other than Seller.

For Warranty Service: Return transportation prepaid with a copy of your purchase receipt and contact details to:

RhinoCo Technology, 9 Hannabus Place, McGraths Hill, NSW 2756 Australia.

Seller has no obligation to attend the buyer's location to retrieve the goods or make repairs onsite.

- There are no warranties, expressed or implied, of merchant ability, or fitness for a particular purpose or otherwise, which extend beyond the description on the face hereof. In no case shall seller be liable to anyone for any consequential or incidental damages for breach of this or any other warranty, express or implied, or upon any other basis of liability whatsoever, even the loss or damage is caused by its own negligence or fault.
- Seller does not represent that the products it sells may not be compromised or circumvented; that the products will prevent any personal injury or property loss by burglary, robbery, fire or otherwise; or that the products will in all cases provide adequate warning or protection. Customer understands that a properly installed and maintained alarm system or video surveillance system may only reduce the risk of a burglary, robbery, or fire without warning, but it is not insurance or a guarantee that such will not occur or that there will be no personal injury or property loss as a result.
- Consequently, seller shall have no liability for any personal injury; property damage or other loss based on a claim the product failed to give any warning. However, if seller is held liable, whether directly or indirectly, for any loss or damage arising under this limited warranty or otherwise, regard less of cause or origin, seller's maximum liability shall not in any case exceed the purchase price of the product, which shall be the complete and exclusive remedy against seller.
- This warranty replaces any previous warranties and is the only warranty made by the Seller on this product. No increase or alteration, written or verbal, of the obligations of this Limited Warranty is authorized.

Please refer to the website (www.vip-vision.com) for a full list of trading terms.





PLEASE CUT OUT & RETURN THIS INFORMATION

WITHIN 14 DAYS OF PURCHASE TO:

RhinoCo Technology
9 Hannabus Place
McGraths Hill NSW 2756 Australia

Model: NVR8ENTPACK
Professional Surveillance Pack Warranty Card

Name			
Address			
Suburb	State	Postcode	
Email			
Date of Purchase	Invoice Number		
Daytime Phone			
Where did you purchase your NVR8ENTPACK?			
Store Location			

This information will only be used by the manufacturer and will not be sold to any third parties.

Dear Customer,

We appreciate your confidence in our product, and you can be certain that we will do everything possible to ensure that you are happy with your decision and that you have years of satisfaction from your NVR8ENTPACK.

We take extreme care in the research, design and development of our products to ensure they meet your needs. Additionally, we keep in close contact with our dealers Australia wide, and should any problem occur, we will work closely with your local dealer to see that it is resolved quickly.

As a leading designer and manufacturer, we are continually endeavoring to exceed the expectations of our customers. Furthermore, we appreciate your input regarding potential design improvements, issues regarding our service and support, and any other ideas you may have which could help us to serve you better.

Please make any comments you have here:
