



# Intelligent AI auto-tracking.

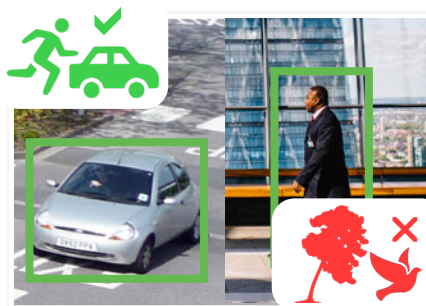
PTZ AI Series: AI perimeter protection PTZ domes in 2.0MP, 4.0MP & 8.0MP

Offer a versatile surveillance experience and ensure all areas are covered with up to 32x optical zoom, auto-tracking and fast endless 360° panning. Experience impressive AI powered video analytics and filter false alarms with AI face detection and AI Perimeter Protection technology, providing meaningful video event notifications in real-time.

- Stream up to 8.0MP (3840 x 2160) at 25fps
- Up to 32x optical zoom; Identify faces from up to 300m
- Low light colour performance at 0.005lx; 150m IR
- Endless 360° panning and -15° ~ 90° tilt adjustable
- MicroSD card slot for edge recording applications
- Perimeter Protection to identify people & vehicles
- Combine Perimeter Protection with Tripwire/Intrusion to prevent false alarms, all using any VIP Vision NVR
- Power by PoE+ (802.3at) or 24VAC (PSU included)
- IP67 weather rated, lightweight dome housing



Up to 4K Ultra HD Resolution



Smart Person & Vehicle Detection



Up to 32x Lossless Optical Zoom

Specifications		2.0MP 25x Zoom AI PTZ	4.0MP 32x Zoom AI PTZ	8.0MP 25x Zoom AI PTZ	
<b>Ordering Information</b>		<b>VSIPPTZ-2IRP-I</b>	<b>VSIPPTZ-4IRP-I</b>	<b>VSIPPTZ-8IRP-I</b>	
<b>Camera</b>	<b>Image Sensor</b>	1/2.8" 2.0MP Starvis™ CMOS	1/2.8" 4.0MP Starvis™ CMOS	1/1.8" 8.0MP Starvis™ CMOS	
	<b>Effective Pixels</b>	1920 (H) x 1080 (V)	2560 (H) x 1440 (V)	3840 (H) x 2160 (V)	
	<b>RAM / ROM</b>	1GB / 4GB		2GB / 8GB	
	<b>Min Illumination</b>	0.005 Lux/F1.6 (Colour), 0.0005 Lux/ F1.6 (B/W)/, 0 Lux (IR Light On)	0.005 Lux/F1.35 (Colour), 0.0005 Lux/ F1.35 (B/W)/, 0 Lux (IR Light On)	0.005 Lux/F1.6 (Colour), 0.0005 Lux/ F1.6 (B/W)/, 0 Lux (IR Light On)	
	<b>Infrared System</b>	4 x Infrared LED, 150m range, Zoom Prio/Auto/Manual/Smart IR On/Off control			
<b>Lens</b>	<b>Lens / Iris</b>	5.4mm ~ 135mm F1.6 ~ F3.5 Motorised Lens	4.9mm ~ 156mm F1.35 ~ F4.4 Motorised Lens	5.4mm ~ 135mm F1.6 ~ F4.0 Motorised Lens	
	<b>Field of View</b>	58.7° ~ 3.1° (H), 33.2° ~ 1.7° (V), 67.3 ~ 3.9° (D) (25x Optical Zoom)	61.6° ~ 2.1° (H), 35.1° ~ 1.3° (V), 68.2 ~ 2.5° (D) (32x Optical Zoom)	61.6° ~ 3.6° (H), 35.7° ~ 2° (V), 66.6 ~ 4° (D) (25x Optical Zoom)	
	<b>Focus</b>	Auto/Semi-Auto/Manual / 0.1m ~ 1.5m Min. Focus Distance		Auto/Semi-Auto/Manual / 0.5m ~ 7m Min. Focus Distance	
<b>DORI</b>	<b>Detect (25px/m)</b>	1655m	3120m	2700m	
	<b>Observe (63px/m)</b>	657m	1232m	1066m	
	<b>Recognise (125px/m)</b>	331m	624m	540m	
	<b>Identify (250px/m)</b>	166m	312m	270m	
<b>PTZ</b>	<b>Pan / Tilt Range</b>	Pan: 0° ~ 360° (endless) / Tilt: -15° ~ 90° / Auto Flip 180°			
	<b>PTZ Speed</b>	Preset: Pan: 400°/s; Tilt: 300°/s Manual: Pan: 300°/s; Tilt: 200°/s			
	<b>Modes / Presets</b>	Up to 300 presets / 5 Pattern, 8 Tour, 5 scanning, Auto Pan, Auto Scan			
	<b>Start-up Action</b>	Auto-restore to previous PTZ/lens status			
	<b>Auto Tracking</b>	Support			
<b>Video</b>	<b>Resolution</b>	1080p (1920 x 1080) to CIF (352 x 288)	4.0MP (2560 x 1440) to CIF (352 x 288)	8.0MP (3840 x 2160) to CIF (352 x 288)	
	<b>Frame Rate</b>	<b>Main</b>	1080p (1 ~ 50fps)	4.0MP (1 ~ 25fps)	8.0MP (1 ~ 25fps)
		<b>Sub</b>		D1 (1 ~ 25fps)	
		<b>Third</b>	1080p (1 ~ 25fps)	720p (1 ~ 25fps)	1080p (1 ~ 25fps)
	<b>Video Compression</b>	H.265+ / H.265 / H.264+ / H.264 / MJPEG		H.265+ / H.265 / H.264+ / H.264 / H.264H / MJPEG	
	<b>Bit Rate</b>	H.265/H.264: 3 ~ 20480Kbps		H.265/H.264: 32 ~ 8192Kbps	
	<b>Bit Rate Control</b>	Constant bit rate (CBR) / Variable bit rate (VBR)			
	<b>Day/Night</b>	Auto (ICR) / Color / B&W			
	<b>Lighting Compensation</b>	BLC / HLC / WDR (120dB)			
	<b>Smart Scene Adaptive</b>	N/A			
	<b>White Balance</b>	Auto / Indoor / Outdoor / Tracking / Manual / Sodium lamp / Natural light / Street lamp			
<b>Gain Control</b>	Auto / Manual				
<b>Noise Reduction</b>	2D / 3D DNR				
<b>Picture Control</b>	Flip 0°/180°				
<b>IVS</b>	<b>Intelligent Functions</b>	Abandoned/Missing Object, Motion Detection, Region of Interest, Electronic Image Stabilisation, Privacy Masking (24 zones), Defog			
	<b>Perimeter Protection</b>	Tripwire & Intrusion (Add recognition of humans & vehicles)			
	<b>Intelligent Search</b>	Via NVR Smart Search, Search tripwire/intrusion events by people or vehicle			
	<b>SMD+</b>	Filter motion detection alarms, recognises humans and vehicles from other moving objects			
	<b>Metadata</b>	Supports human, motor vehicles and non motor vehicle search. Supports face image capture and footage search by face image & facial attributes			
<b>Network</b>	<b>Ethernet</b>	RJ-45 (10/100Base-T)			
	<b>Protocol</b>	IPv4; IPv6; HTTP; HTTPS; 802.1x; Qos; FTP; SMTP; UPnP; SNMPv1/v2c/v3 (MIB-2); DNS; DDNS; NTP; RTSP; RTP; TCP; UDP; IGMP; ICMP; DHCP; PPPoE; ARP; RTCP			
	<b>Streaming Method</b>	Unicast / Multicast			
	<b>Max. User Access</b>	20 Users			
<b>Environmental</b>	<b>Audio Interface</b>	1 Input / 1 Output / Compression: G.711A; G.711Mu; G.726; AAC; G.722.1; G.723; G.729; PCM; MPEG2-Layer2			
	<b>Alarm Interface</b>	2 Inputs / 1 Output			
	<b>RS485</b>	N/A			
	<b>Edge Storage</b>	FTP; Micro SD card (256G); P2P			
	<b>Interoperability</b>	ONVIF Profile S&G&T; CGI			
	<b>Power Supply</b>	24VAC/3A (±25%) / PoE+ (802.3at)			
	<b>Power Consumption</b>	<8W / <20W (IR on)	<12W / <20W (IR on)	<11W / <20W (IR on)	
	<b>Operating Conditions</b>	-40° ~ +70° C / Less than 95% RH			
	<b>Ingress Protection</b>	IP67			
	<b>Vandal Resistance</b>	IK10			
<b>Surge Protection</b>	TVS 6000V Lightning Protection / Surge Protection				
<b>Housing</b>	Metal				
<b>Dimensions</b>	Ø190mm x 332mm				
<b>Net Weight</b>	4.7kg				

Wall Mount	Pole Mount	Ceiling Mount	Parapet Mount
VSBKTB305W	VSBKTB305W + VSBKTA150	VSBKTA111 + VSBKTB300C + (+ VSBKTA112/13 optional extension)	VSBKTA111 + VSBKTB303S
VSBKTB305W + VSBKTA120			
VSBKTB305W + VSBKTA140	VSBKTA111 + VSBKTB300C + VSBKTA150		

Your local VIP Vision™ IP solutions professional: