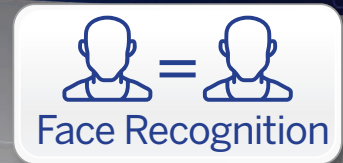


AI
ARTIFICIAL INTELLIGENCE



AI-enhanced CCTV upgrades.

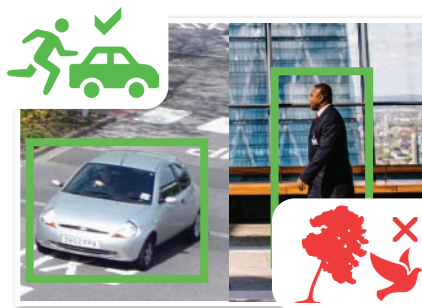
Professional Series: Intelligent AI HDCVI DVRs available in 8 and 16 channels

Rapidly transform low-resolution surveillance into high performing HD CCTV, with support for IP & analogue video inputs. The Securview™ Professional AI Series offers advanced technologies to transform the way surveillance works for you. Monitor your operations using intelligent face recognition & AI people and vehicle detection. Identify strangers, set up blacklists, search playback by face and receive people & vehicle surveillance alerts to your devices.

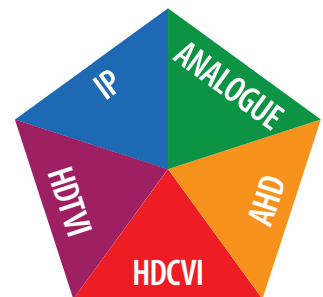
- Record up to 8.0MP (3840 x 2160) at 7fps (HDCVI)
- Add additional IP channels up to 8.0MP resolution
- Up to 128Mbps incoming bandwidth, H.265+ support
- HDD support for up to 80TB of footage storage
- HDMI (up to 4K) & VGA simultaneous video output
- AI detection to identify people & vehicles with smart motion detection (SMD+) & perimeter protection
- Identify people for security & business intelligence with up to 6 channels of face recognition (*with BNC inputs*)
- Receive face recognition & people/vehicle detection alerts



AI Powered Facial Recognition



Smart Person & Vehicle Detection



Victory Synergy Compatibility

Model	CVR8PRO4	CVR16PRO4	CVR32PRO4
Main Processor / OS	Embedded Processor, embedded Linux OS		
Video Input	8 channel BNC	16 channel BNC	32 channel BNC
Camera Configurations	Coaxial: 8 channels up to 8.0MP/7fps (HDCVI), 960H/25fps (analogue)	Coaxial: 16 channels up to 8.0MP/7fps (HDCVI), 960H/25fps (analogue)	Coaxial: 32 channels up to 8.0MP/7fps (HDCVI), 960H/25fps (analogue)
	Network: Add 8 additional channels up to 8.0MP Max 128Mbps Incoming Bandwidth	Network: Add 16 additional channels up to 8.0MP Max 128Mbps Incoming Bandwidth	Network: Substitute up to 32 channels up to 12.0MP Max 128Mbps Incoming Bandwidth
Audio In/Out	4 / 1, RCA		16 / 1, BNC
Two-way Talk	Reuse channel 1 audio input/ output, RCA		1 audio input/output, BNC
Video Output	1 HDMI / 1 VGA		2 HDMI / 1 VGA / 1 TV
Display Resolution	3840 x 2160 to 1280 x 720		
Display Split	1 / 4 / 8 / 9 (16 w/ IP extension mode enabled)	1 / 4 / 8 / 9 / 16 (25 / 32 w/ IP extension mode enabled)	1 / 4 / 8 / 9 / 16 / 25 / 32
OSD	Camera title, time, video loss, camera lock, MD & recording		
Maximum Resolution	8.0MP (3840 x 2160) / 4.0MP (2560 x 1440) / 1080p (1920 x 1080)		
Frame Rate	Main: 8.0MP (1~7fps) / 6.0MP (1~10fps) / 5.0MP (1~12fps) / 4.0MP & 3.0MP (1~15fps) / 1080p (1~25fps) / Sub: 960H (1~15fps) / D1 (1~25fps)		
Video Compression	AI Coding / H.265+ / H.265 / H.264+ / H.264		
Bit Rate	32Kbps ~ 6144Kbps Per Channel		
Record Modes	Manual / Schedule (Regular, Continuous), Motion Detection (Video Detection, Motion Detection, Video Loss, Tampering), Alarm, Stop		
Record Interval	1 ~ 60 min (default: 60 min) / Pre: 1 ~ 30s / Post: 10 ~ 300s		
Performance (Faces)	Max. 12 face pictures per second (modeling and comparing) (Performance varies depending on camera and resolution)		
Performance (Channel)	Approx. 2 channels face recognition (BNC input only, adding additional IP Cameras disables face recognition)		Approx. 6 channels face recognition (BNC input only)
Stranger Mode	Detect strangers face (not in database)		
AI Search	Up to 8 target face images at the same time		
Database Management	Up to 10 face databases with 20,000 face images in total. Name, gender, birthday, nationality, address, ID information can be added to each face picture		
Database Application	Each database can be applied to video channels independently		
Trigger Events	Buzzer, Voice Prompts, Email, snapshot, Recording, Alarm Out, PTZ activation, etc		
Perimeter Protection	2 channels, 10 IVS rules for each channel		6 channels, 10 IVS rules for each channel
Smart Motion Detection	8 channels	16 channels	32 channels
Metadata	N/A		
AI Search	Search footage by target classification (Human, Vehicle)		
Object Classification	Perimeter Protection: Human / vehicle secondary recognition for tripwire / intrusion		
Alarm Input / Output	8 channel input / 3 relay output	16 channel input / 3 relay output	16 channel input / 6 relay output
Trigger Events	Recording; PTZ; tour; push video notification; email notification; FTP upload; snapshot; internal buzzer; and screen tip overlay		
Video Detection	MD zones: 396 (22 x 18) / Video Loss / Tampering / Diagnosis		
Playback Sync	1 / 4 / 9	1 / 4 / 9 / 16	
Search Modes	Time/Date; Alarm, Motion detection; Exact search (to the second)		
Backup Modes	USB Device / Network		
Ethernet	1 x RJ-45 port (1000M)		2 x RJ-45 port (1000M)
Network Functions	HTTP, HTTPS, IPv4/IPv6, TCP/IP, Wi-Fi, 3G/4G, SNMP, UPNP, RTSP, UDP, SMTP, NTP, DHCP, DNS, PPOE, DDNS, FTP, IP Filter, Alarm Server, P2P, IP Search		
Max. User Access	128 Users		
Remote View	IOS (iPhone, iPad); Android devices		
Internal HDD	2 x SATA ports, up to 20TB total		8 x SATA ports, up to 80TB total
USB Interface	2 x ports: 1 x USB2.0, 1 x USB3.0		4 x ports: 2 x USB2.0, 2 x USB3.0
Auxiliary Inputs	1 x RS485 port (for PTZ)		1 x RS485 port (for PTZ) / 1 x R232 port (for PC comms)
Power Supply	12VDC/4A	12VDC/5A	
Power Consumption	<10W (without HDD)	<15W (without HDD)	
Operating Environment	-10 ~ 55°C / 10 ~ 90%RH		
Dimensions	375mm x 288mm x 53mm		440mm x 463mm x 95mm (2U)
Weight	1.6kg (without HDD)	1.9kg (without HDD)	7.0kg (without HDD)
Application	<p>Above: CVR8PRO4</p>		

Your local Securview™ HDCVI solutions professional: