



Identify people & vehicles.

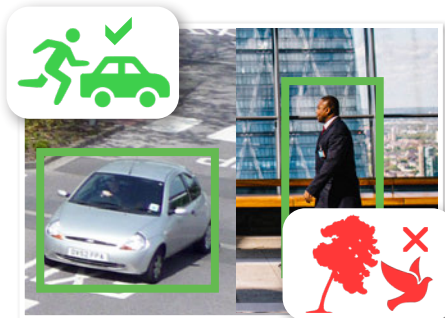
Professional AI Series: Fixed AI bullet cameras in 4.0MP & 8.0MP

The Professional AI Series identifies people & vehicles using machine learning, to reduce false motion detection alerts and provide meaningful video event notifications in real-time. When used in conjunction with a VIP Vision NVR, person and vehicle events can be isolated in footage playback to improve surveillance efficiency.

- Stream up to 8.0MP (3840 x 2160) at 20fps
- H.265 encoding for efficient storage & streaming
- Up to 50m infrared range; true day/night (auto ICR)
- Back/highlight compensation & true WDR (120dB)
- MicroSD slot for recording at the edge up to 256GB
- Intelligent AI detection to identify people & vehicles
- Smart Motion Detection (SMD+) & Perimeter Protection to prevent false alarms, using VIP Vision NVRs
- 3D digital noise reduction & auto white balance
- IP67 weather rated housing for outdoor use



Record at 4K Ultra HD Resolution



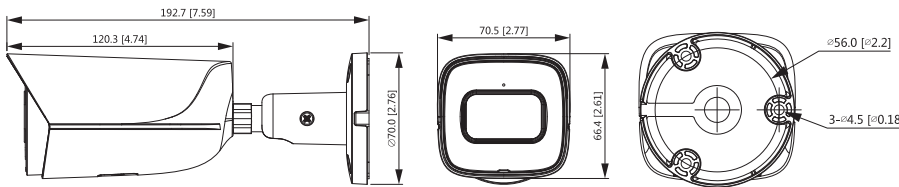
Smart Person & Vehicle Detection



Superb Low Light Performance

Specifications		4.0MP Fixed AI Bullet	8.0MP Fixed AI Bullet	
Ordering Information		VSIPP-4BIRG-I		
Ordering Information		VSIPP-8BIRG-I		
Camera	Image Sensor	1/3" 4.0MP Progressive Scan CMOS	1/2.8" 8.0MP Progressive Scan CMOS	
	Effective Pixels	2688 (H) x 1520 (V)	3840 (H) x 2160 (V)	
	RAM / ROM	512MB / 128MB		
	Min Illumination	0.005 Lux/F1.6 (Color)	0.007 Lux/F1.4 (Color)	
	S/N Ratio	> 56dB		
	Infrared System	1 x Infrared LED, 50m range, Auto/manual on/off control	1 x Infrared LED, 30m range, Auto/manual on/off control	
Lens	Lens / Iris	2.8mm F1.6 Fixed Lens	2.8mm F1.4 Fixed Lens	
	Field of View	Horizontal: 103°, Vertical: 55°	Horizontal: 108°, Vertical: 58°	
	Focus	Fixed / 0.9m Min. Focus	Fixed / 1.4m Min. Focus	
DORI	Detect (25px/m)	56m	85m	
	Observe (63px/m)	22m	34m	
	Recognise (125px/m)	11m	17m	
	Identify (250px/m)	6m	9m	
Video	Resolution	4.0MP (2688 x 1520) to CIF (352 x 288)	8.0MP (3840 x 2160) to CIF (352 x 288)	
	Frame Rate	Main	4.0MP (1 ~ 25fps)	8.0MP (1 ~ 20fps)
		Sub	D1 (1 ~ 25fps)	
		Third	720p (1 ~ 25fps)	
	Video Compression	H.265+ / H.265 / H.264+ / H.264 / H.264B / MJPEG		
	Bit Rate	H.265: 3 ~ 8192Kbps / H.264: 3 ~ 8192Kbps		
	Bit Rate Control	Constant bit rate (CBR) / Variable bit rate (VBR)		
	Day/Night	Auto (ICR) / Color / B&W		
	Lighting Compensation	BLC / HLC / WDR (120dB)		
	Smart Scene Adaptive	SSA		
White Balance	Auto / Natural / Street Lamp / Outdoor / Manual / Regional Custom			
Gain Control	Auto / Manual			
Noise Reduction	3D DNR			
Picture Control	Mirror / Flip (0°, 90°, 180°, 270°) (Support 90°/270° at 2.0MP resolution)			
IVS	Video Functions	Motion Detection (4 zones), Region of Interest (4 zones), Privacy Masking (4 zones), Smart Infrared		
	AI Functions	Smart Motion Detection (SMD+): People and vehicle detection using motion detection Perimeter Protection: People and vehicle detection using tripwire or intrusion rules		
	Intelligent Search	Search people or vehicle detection events (SMD+, Perimeter Protection)		
Network	Ethernet	RJ-45 (10/100Base-T)		
	Protocol	IPv4; IPv6; HTTP; HTTPS; TCP; UDP; ARP; RTP; RTSP; RTCP; RTMP; SMTP; FTP; SFTP; DHCP; DNS; DDNS; QoS; UPnP; NTP; Multicast; ICMP; IGMP; NFS; SAMBA; PPPoE; 802.1x; SNMP		
	Streaming Method	Unicast / Multicast		
	Max. User Access	20 Users		
Interface	Video Interface	N/A		
	Audio Interface	Built-in Mic / Audio Compression - G.711a; G.711Mu; G726; AAC		
	Alarm Interface	N/A	1 channel in: 5mA 3-5VDC / 1 channel out: 300mA 12VDC	
	RS485	N/A		
	Edge Storage	MicroSD Card (up to 256GB) / NAS / FTP / SFTP		
	Interoperability	ONVIF / P2P / CGI / Milestone / Genetec		
Environmental	Power Supply	12VDC / PoE (802.3af)		
	Power Consumption	<5.4W	<7.9W	
	Operating Conditions	-40°C ~ +60°C, ≤95% RH		
	Ingress Protection	IP67		
	Vandal Resistance	N/A		
	Housing	Metal		
	Pan/Tilt/Rotation	Pan: 0° ~ 360°, Tilt: 0° ~ 90°, Rotation: 0° ~ 360°		
Dimensions	193mm x 71mm x 66mm			
Net Weight	0.59kg			

Application



Junction Box		
VSBKTA130E	VSBKTA134	VSBKTA12A
Pole Mount		Corner Mount
VSBKTA130E + VSBKTA152E	VSBKTA134 + VSBKTA152E	VSBKTA130E + VSBKTA151

Your local VIP Vision™ IP solutions professional: