

# LONGEVITY



## 4G Wireless Remote Quick Start Guide

Version: WGRX4G-Q320

## 1. Product Overview

The Longevity WGRX4G is a smart controller based on GSM network. It can be used in a wide variety of remote control devices and access control systems.

### Features

- 3G/4G GSM network
- Remote set up and control by App
- Unlimited number of users
- Device output naming
- 5 working mode: On/Off, Timer, Interlock, Sequential lock and Schedule mode
- Log records
- Device sharing
- User limitation: administrator can set user operation time in specific working hours
- User management: Add, delete users
- Restore factory defaults

### App Download



### Specifications

Output Channels	2
Working Current	90~180mA
Standby Current	40~50mA
Power Supply	11~14VDC
Relay Contact Rating	20A 14 VDC or 20A 125 VAC
Network Band	<b>4G:</b> LTE-TDD B40 LTE-FDD B1/B2/B3/B4/B5/B7/B8/B28 <b>3G:</b> UMTS/HSPA+ B1/B2/B5/B8 <b>2G:</b> GSM/GPRS/ EDGE850/900/1800/1900MHz
Antenna	50 Ω SMA Antenna
Operating Temperature	-10 to +50°C
Size	93mm x 70mm x 30mm

## 2. Connecting the WGRX4G

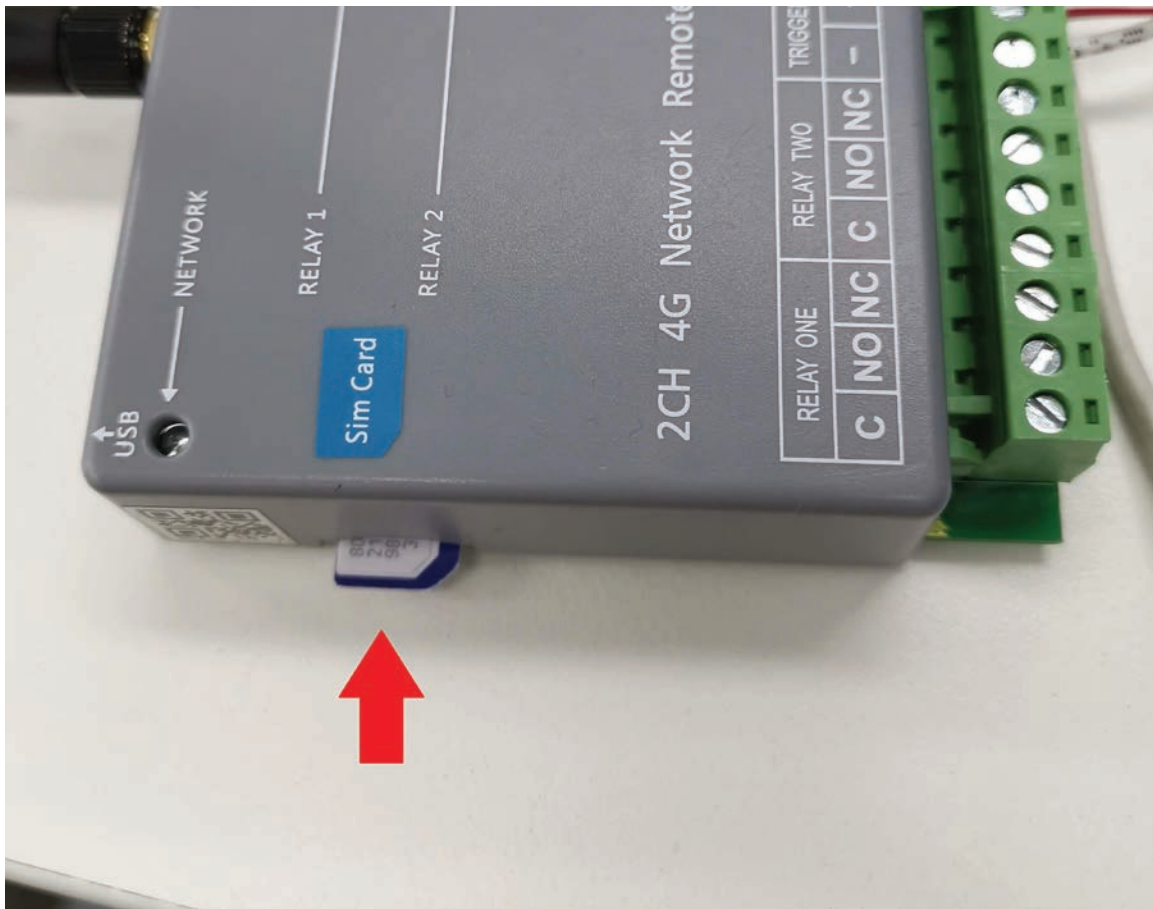
Connect the unit with 12V DC power. The network LED will flash quickly to indicate network searching. If the network is registered successfully, the LED will blink slowly. Otherwise, the device will stay on for 10 seconds and continue searching.



Terminals	
12 Volts (+)	Connect to the positive terminal of a 12VDC power supply (not included)
12 Volts (-)	Connect to the negative terminal of a 12VDC power supply (not included)
TRIGGERS - (Left)	Connect this terminal to 0V (GND). This will force Relay 1 to switch off when it fails to connect to the mobile network.
TRIGGERS - (Right)	Connect this terminal to 0V (GND). This will force Relay 2 to switch off when it fails to connect to the mobile network.
RELAY ONE/TWO (C)	Common contact of the relay.
RELAY ONE/TWO (NO)	Normally Opened contact of the relay.
RELAY ONE/TWO (NC)	Normally Closed contact of the relay.

## 2. Connecting the WGRX4G (continued)

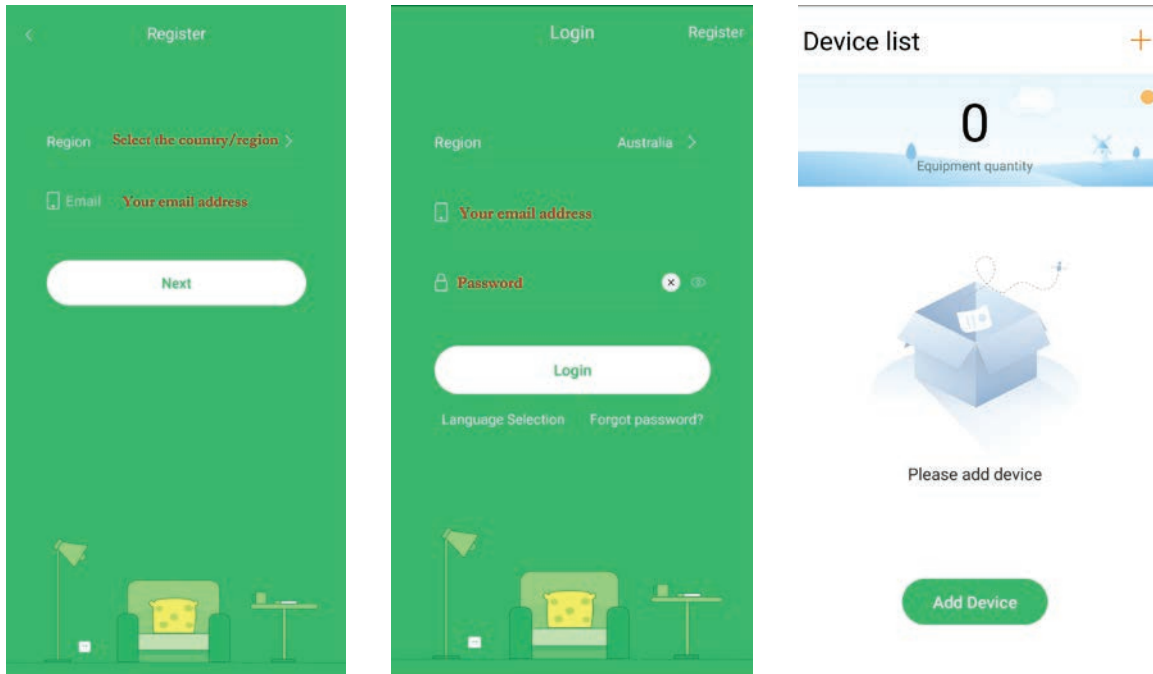
Insert an active SIM card into the pictured slot (*not included*).



## 3. App Setup & Control

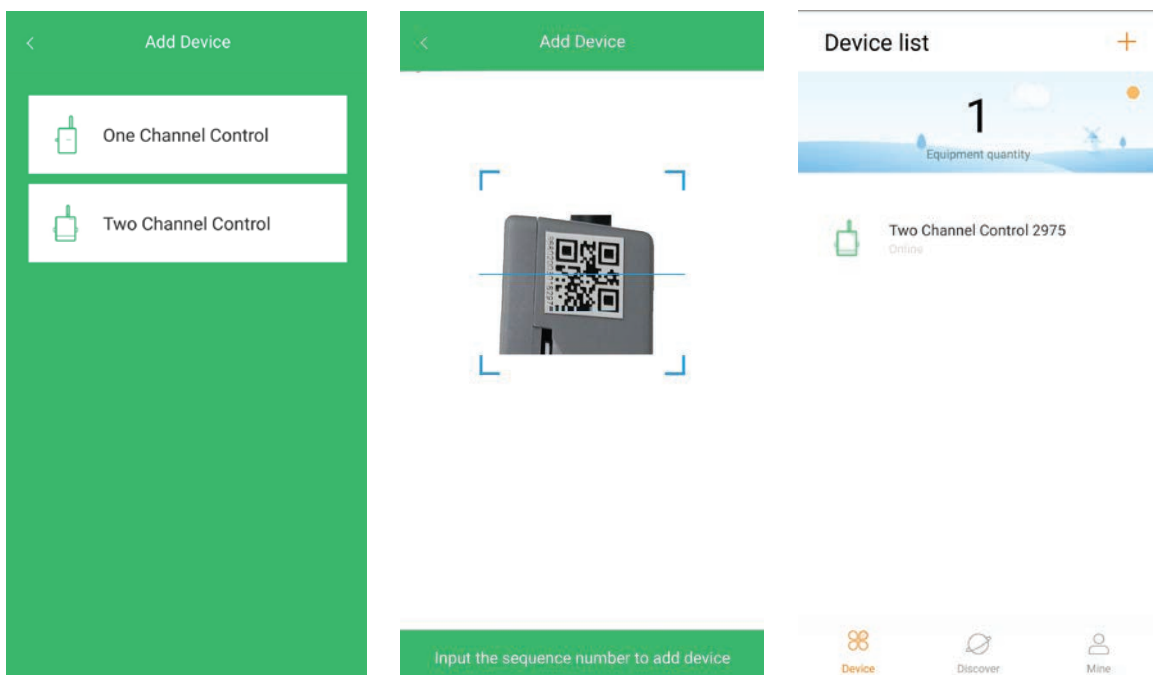
### 3.1 Create Account/Log In

1. Scan the QR code in page 2 to install the app.
2. Enter the app. Click Register and select the region. Input your email address and password.
3. If login is successful, you will see the Device List menu.



### 3.2 Add Device

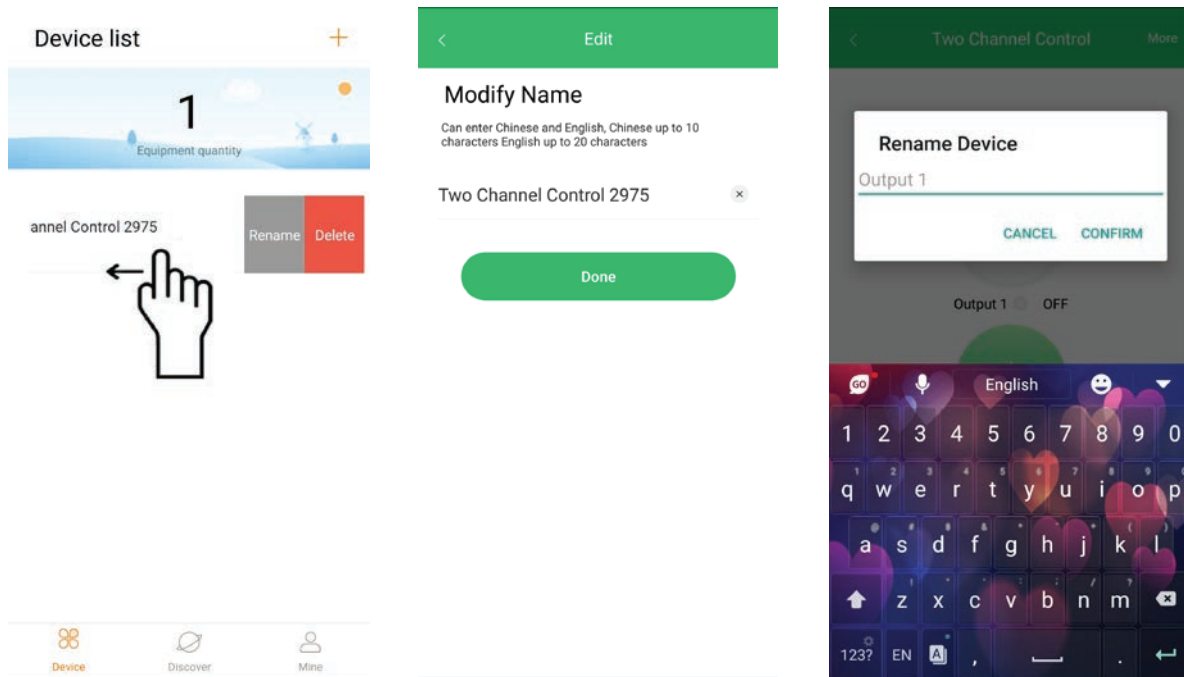
1. From the Device List menu, click **Add Device**, then select **Two Channel Control**.
2. Scan the QR code on the WGGP2 or input the IMEI number manually to add device.
3. Refresh the device list. If added successfully, you should see the device you've just added.



## App Setup & Control (continued)

### 3.3 Rename or Delete Device

1. Swipe left on the device on the device list.
2. Tap **Rename** to modify the device name or **Delete** to remove the device.



### 3.4 Turn Device On/Off

1. Simply tap the **Power icon** for the device you wish to turn on/off. Each device can be toggled individually.



### 3.5 Timer Mode

Tap to turn ON the 2 outputs. They will turn OFF automatically after the preset period of time.

**Range:** 0 ~ 65000 seconds

If 0 is used, the output will stay ON. User can turn off the relays by changing to On/Off mode (Self Lock).

### 3.6 Interlock Mode

Tap to turn ON one of the two outputs. It will turn OFF automatically after the preset period of time.

**Note:** Only one output can be ON at the same time. If Output 1 is ON and Output 2 is tapped ON, Output 1 will turn OFF immediately and vice versa.

**Range:** 0 ~ 65000 seconds

If 0 is used, the output will stay ON. User can turn off the relays by changing to On/Off mode (Self Lock).

### 3.7 Sequential Lock Mode

1. Set two output working time and the delay time between them.
2. When you turn ON any of these two outputs, the first relay will turn ON and automatically turn off after the preset delay time.
3. The second output will turn ON for the preset delay time.

**Range:** 0 ~ 65000 seconds

If 0 is used as the delay time, two outputs will turn ON simultaneously.

< Non Lock

#### Working Time Setting

Please set the two outputs working time (0-65000s), It will automatically turn off after preset time. 0 means that the working time of the relay is unlimited and permanent

Output 1

5000 S

Output 2

580 S

Done

< Inter Lock

#### Working Time Setting

Please set the two outputs working time (0-65000s), It will automatically turn off after preset time; 0 means that the working time of the output is unlimited.

Output 1

5 S

Output 2

58 S

Done

< Delay Lock

#### Working Time Setting

Please set the two outputs working time (1-65000s), and input the delay time (0-65000s) between output 1 and output 2, 0 second means two outputs working at the same time .

Output 1

S

Delay Time

S

Output 2

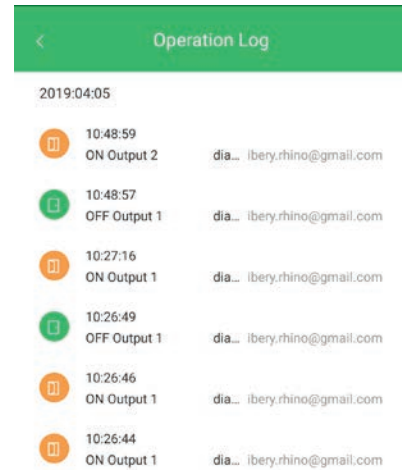
S

Done

### 3.8 Operation Log

Click **More** at the top right to see the Operation Log option.

Here, you can view a log of all device operations, including the device turning on/off.



### 3.9 Share Device

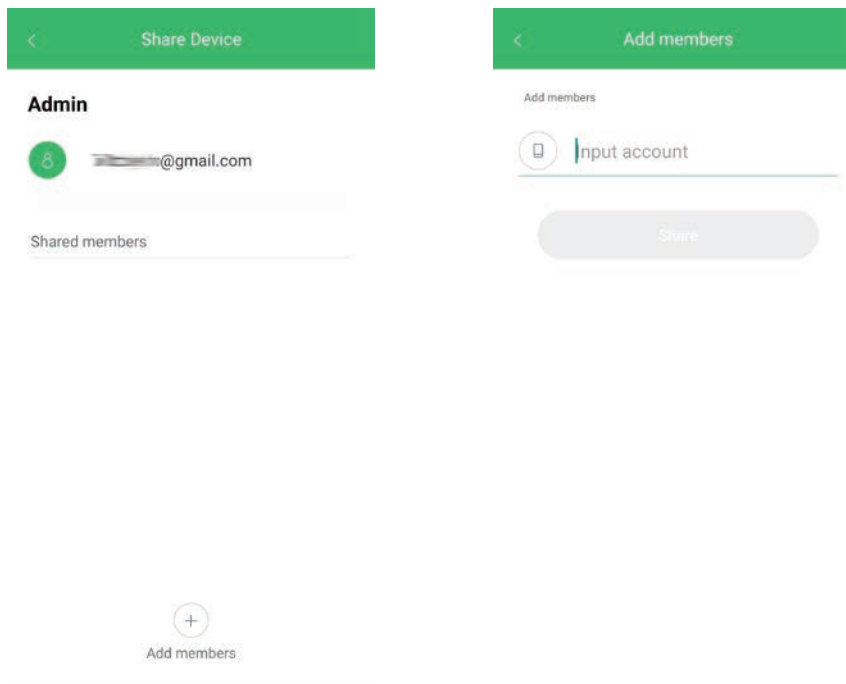
Click **More** at the top right to see the Share Device option.

Administrators can share the device by adding users through the App. Each new user must register as a new account.

To delete a user, **swipe left**  on the member list and tap **Delete**.

To delete an administrator, follow these steps:

1. With the device powered up and the network connection is stable (Blue LED flashing slowly), press and hold the reset button for 3-5 seconds and then release.
2. The blue network LED will flash very quickly. The administrator is deleted successfully.
3. Device(s) will now be unbinded. You must add the device(s) again before using.



### 3.10 Emergency Cut-off Terminals

In case of the cloud server is out of service or the mobile network is not available, you can turn OFF the relay by using the emergency cut off terminals.

Connect the terminal to 0V (GND) will turn off the corresponding relay.

**Note:** The emergency cut-off terminal can only TURN OFF the relay.

# LONGEVITY

Version: WGRX4G-Q320

Note:

All products, designs and software here are subject to change without prior written notice.