



AI & built-in illumination.

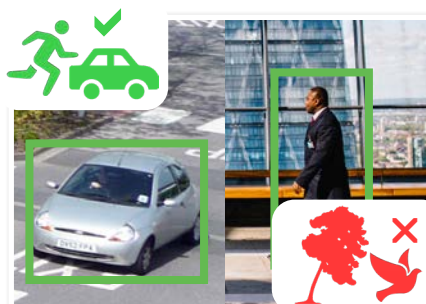
Professional AI Series: Fixed AI perimeter protection turret dome with built-in LEDs

The Professional AI Series identifies people & vehicles using machine learning, to reduce false motion detection alerts and provide meaningful video event notifications in real-time. Capture full colour detail and illuminate the scene at night for extra security with the built-in LED lights, that are controlled manually.

- Stream up to 1080p (1920 x 1080) at 25fps
- H.265 encoding for efficient storage & streaming
- Built-in warm white LED lights for 30m illumination
- MicroSD slot for recording at the edge up to 256GB
- Intelligent AI detection to identify people & vehicles
- Smart Motion Detection (SMD+) & Perimeter Protection to prevent false alarms, using VIP Vision NVRs
- Back/highlight compensation & true WDR (120dB)
- 3D digital noise reduction & auto white balance
- IP67 weather rated housing for outdoor use



Weather Resistant Housing



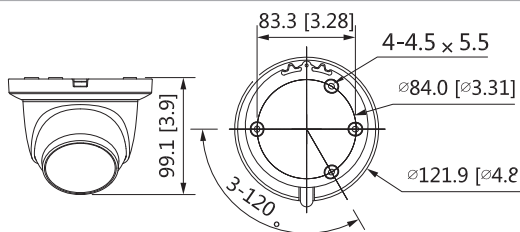
Smart Person & Vehicle Detection



Manual LED Light Control

Specifications		2.0MP Fixed AI Turret Dome with LEDs	
Ordering Information		VSIPP-2DIRG-IL: Standard	
Camera	Image Sensor	1/2.8" 2.0MP Progressive Scan CMOS	
	Effective Pixels	1920 (H) x 1080 (V)	
	RAM / ROM	512MB / 128MB	
	Min Illumination	0.0015 Lux/F1.0 (Color)	
	S/N Ratio	> 56dB	
	LED Illumination	2 x LEDs (warm white), 30m range, Auto/manual on/off control (Via web interface)	
	Lens	Lens / Iris	3.6mm Fixed Focal Lens with Fixed Iris
Field of View		Horizontal: 84°, Vertical: 45°	
Focus		Auto Focus / 1.7m Min. Focus Distance	
DORI	Detect (25px/m)	55m	
	Observe (63px/m)	22m	
	Recognise (125px/m)	11m	
	Identify (250px/m)	5m	
Video	Resolution	1080p (1920 x 1080) to CIF (352 x 288)	
	Frame Rate	Main	1080p (1 ~ 25fps)
		Sub	D1 (1 ~ 25fps)
		Third	720p (1 ~ 25fps)
	Video Compression	H.265 / H.264 / H.264H / H.264B / MJPEG	
	Bit Rate	H.265: 3 ~ 8192Kbps / H.264: 3 ~ 8192Kbps	
	Bit Rate Control	Constant bit rate (CBR) / Variable bit rate (VBR)	
	Day/Night	Color / B&W	
	Lighting Compensation	BLC / HLC / WDR (120dB)	
	White Balance	Auto / Natural / Street Lamp / Outdoor / Manual / Regional Custom	
	Gain Control	Auto / Manual	
Noise Reduction	3D DNR		
Picture Control	Mirror / Flip (0°, 90°, 180°, 270°)		
IVS	Video Functions	Motion Detection (4 zones), Region of Interest (4 zones), Privacy Masking (4 zones)	
	AI Functions	Smart Motion Detection (SMD+): People and vehicle detection using motion detection Perimeter Protection: People and vehicle detection using tripwire or intrusion rules	
	Intelligent search	Search people or vehicle detection events (SMD+, Perimeter Protection)	
Network	Ethernet	RJ-45 (10/100Base-T)	
	Protocol	IPv4; IPv6; HTTP; HTTPS; TCP; UDP; ARP; RTP; RTSP; RTCP; RTMP; SMTP; FTP; SFTP; DHCP; DNS; DDNS; QoS; UPnP; NTP; Multicast; ICMP; IGMP; NFS; PPPoE; 802.1x; SNMP	
	Streaming Method	Unicast / Multicast	
	Max. User Access	20 Users	
Interface	Video Interface	N/A	
	Audio Interface	Built-in Mic / Audio Compression - G.711a; G.711mu; G726; AAC	
	Alarm Interface	N/A	
	RS485	N/A	
	Edge Storage	MicroSD Card (up to 256GB) / NAS / FTP / SFTP	
	Interoperability	ONVIF (Profile S, Profile G) / P2P / CGI / Milestone / Genetec	
Environmental	Power Supply	12VDC / PoE (802.3af)	
	Power Consumption	<8.1W	
	Operating Conditions	-40°C ~ +60°C / ≤95% RH	
	Ingress Protection	IP67	
	Vandal Resistance	N/A	
	Housing	Metal	
	Pan/Tilt/Rotation	Pan: 0° ~ 360°, Tilt: 0° ~ 78°, Rotation: 0° ~ 360°	
	Dimensions	Ø122mm x 99mm	
Net Weight	0.66kg		

Application



Junction Box		Wall Mount		Corner Mount
VSBKTA130E	VSBKTA137	VSBKTB203W	VSBKTA106 + VSBKTB305W	VSBKTA106 + VSBKTB305W + VSBKTA151
Pole Mount				Ceiling Mount
VSBKTA106 + VSBKTB305W + VSBKTA150	VSBKTA130E + VSBKTA152E	VSBKTA137 + VSBKTA152E	VSBKTB203W + VSBKTA152E	VSBKTA106 + VSBKTB220C (+ VSBKTA117 optional extension)

Your local VIP Vision™ IP solutions professional: