



Amazing functionality.

Ultimate PTZ Series: Specialist PTZ domes available in 2.0MP & 8.0MP

An outstanding performer in long range surveillance applications, this formidable 30x optical zoom PTZ is also equipped with 500m laser infrared, a host of intelligent functions and configurable auto-tracking.

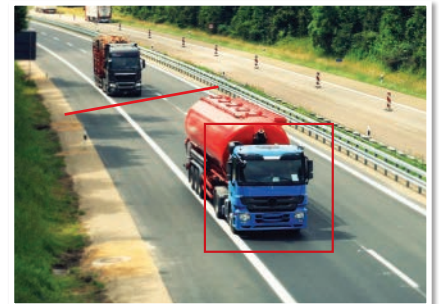
- Stream up to 4K/8.0MP (3840 x 2160) at 25fps
- 30x optical zoom lens (61.2 ~ 2.1° viewing angles)
- Auto tracking with 8 intelligent video functions
- Adjustable beam angle laser infrared up to 500m
- Electronic image stabilisation, face detect & more
- Endless 360° panning with tilt adjust; auto-flip 180°
- MicroSD card slot for recording up to 128GB
- Audio and alarm interface input/output
- Supports power via Hi-PoE (IEEE802.3at)
- IP67 weather resistant housing for external use



30x Lossless Optical Zoom



Precision Laser Infrared System



Intelligent Auto Tracking

Specifications		2.0MP Laser IR PTZ	8.0MP Laser IR PTZ					
Camera	Ordering Information	VSIP2MPPTZIRL: Standard	VSIP8MPPTZIRL: Standard					
	Image Sensor	1/1.9" 2.0MP Progressive Scan CMOS	1/1.7" 12.0MP Starvis™ CMOS					
	Effective Pixels	1920 (H) x 1080 (V)	3840 (H) x 2160 (V)					
	RAM / ROM	1024MB / 64MB	1024MB / 128MB					
	Min Illumination	0.002 Lux/F1.5 (Color), 0 Lux/F1.5 (IR on)	0.05 Lux/F1.6 (Color), 0 Lux/F1.6 (IR on)					
	S/N Ratio	> 56dB						
Lens	Infrared System	Laser Infrared Module, 500m range, Auto/manual angle adjustment (60 ~ 2°)						
	Lens / Iris	6 ~ 180mm F1.5 ~ F4.3 Motorised Lens with Auto Iris	6 ~ 180mm F1.6 ~ F4.8 Motorised Lens with Auto Iris					
	Field of View	Horizontal: 61.2° ~ 2.1° (30x Optical Zoom)						
DORI	Focus	Auto/Manual / 1m Min. Focus Distance						
	Detect (25px/m)	1920m	3892m					
	Observe (63px/m)	768m	1557m					
	Recognise (125px/m)	384m	778m					
	Identify (250px/m)	192m	389m					
PTZ	Pan / Tilt Range	Pan: 0 ~ 360° (endless) / Tilt: -20 ~ 90° / Auto-flip 180°						
	PTZ Speed	Preset: Pan: 240°/s; Tilt: 200°/s Manual: Pan: 200°/s; Tilt: 120°/s						
	Modes / Presets	Up to 300 presets / 5 Pattern, 8 Tour, Auto Pan, Auto Scan						
	Start-up Action	Auto-restore to previous PTZ/lens status						
	Auto Tracking	Support						
Video	Resolution	1080p (1920 x 1080) to CIF(352 x 288)	8.0MP (3840 x 2160) to CIF(352 x 288)					
	Frame Rate	Main	1080p (1 ~ 25fps) / 720p (1 ~ 50fps)	8.0MP (1 ~ 25fps) / 1080p (1 ~ 50fps)				
		Sub	D1 (1 ~ 25fps)	D1 (1 ~ 25fps)				
		Third	1080p (1 ~ 25fps)	1080p (1 ~ 25fps)				
	Video Compression	H.264 / MJPEG						
	Bit Rate	H.264: 448K ~ 8192Kbps / MJPEG: 4096K ~ 20480Kbps	H.265: 14 ~ 9984Kbps / H.264: 24 ~ 16384Kbps					
	Bit Rate Control	Constant bit rate (CBR) / Variable bit rate (VBR)						
	Day/Night	Auto (ICR) / Color / B&W	Auto (ICR) / Color / B&W					
	Lighting Compensation	BLC / HLC / WDR (120dB)	BLC / HLC / Digital WDR					
	White Balance	Auto / ATW / Indoor / Outdoor / Manual						
Gain Control	Auto / Manual							
Noise Reduction	Ultra 2D/3D DNR							
Picture Control	Flip 180°							
IVS	Intelligent Functions	Tripwire, Intrusion, Abandoned/Missing Object, Face Detection, Motion Detection, Region of Interest, Electronic Image Stabilisation, Privacy Masking (24 zones), Defog						
	Ethernet	RJ-45 (10/100Base-T)						
Network	Protocol	HTTP, HTTPS, TCP, ARP, RTSP, RTP, UDP, SMTP, FTP, DHCP, DNS, DDNS, PPPoE, IPv4/v6, QoS, UPnP, NTP, Bonjour, 802.1x, Multicast, ICMP, IGMP, SNMP						
	Streaming Method	Unicast / Multicast						
	Max. User Access	10 Users / 20 Users						
Interface	Video Interface	1 Output (Vpp 75Ω)						
	Audio Interface	1 Input, 1 Output / Compression: G.711a, G.711mu, G.726, AAC						
	Alarm Interface	7 Inputs / 2 Outputs						
	RS485	Yes						
	Edge Storage	MicroSD Card (up to 128GB) / NAS / Local PC						
	Interoperability	ONVIF / PSIA / CGI						
Environmental	Power Supply	24VAC / 3A / Hi-PoE (IEEE802.3at)						
	Power Consumption	<24W						
	Operating Conditions	-40° ~ +70° C / Less than 90% RH						
	Ingress Protection	IP67						
	Vandal Resistance	N/A						
	Housing	Metal						
	Pan/Tilt/Rotation	Pan: 0° ~ 360° ; Tilt: -20° ~ 90° ; Rotation: 0° ~ 360°						
Application	Dimensions	Ø240mm x 357mm						
	Net Weight	6.75kg						
Application	Mounting Options							
		<p>Incl. Accessories: AC power supply, VSBKTA111, VSBKTB303W</p> <p>Ceiling Mount VSBKTB300C Junction Box VSBKTA120 Power Box Mount VSBKTA140 Pole Mount VSBKTA150 Corner Mount VSBKTA151 Parapet Mount VSBKTB303S</p>						

Your local VIP Vision™ IP solutions professional: