



Vehicle video evidence.

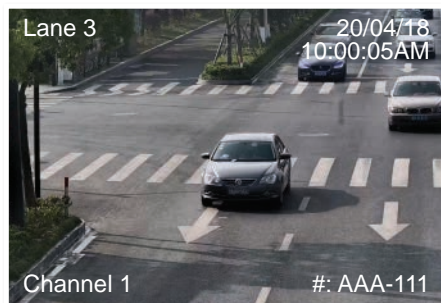
Traffic Series: Motorised lens 2.0MP bullets with number plate enhancement

Specially designed for number plate enhancement, Traffic Series number plate cameras are designed to obtain video evidence with vehicle identification in controlled environments with challenging lighting conditions.

- Stream Full HD 1080p (1920 x 1080) at 25fps
- 2.7~12mm motorised lens (101 ~ 36°, DC auto iris)
- Edge enhancement for number plate detail & legibility
- Highlight compensation removes headlight glare
- Supports shutter speed windowing; set min/max speed
- Motorised infrared cut filter for true day/night
- MicroSD slot for recording at the edge up to 128GB
- IP67/IK10 weather & vandal resistant metal housing
- Automatic number-plate recognition (ANPR) with configurable OSD incl. number plate (*TN model only*)



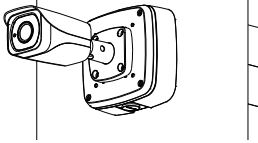
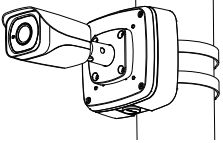
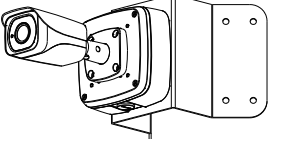



Number Plate Enhance & Recognition



Detailed OSD Configuration



Superb Low Light Performance

Specifications		2.0MP Number Plate Bullet	2.0MP Number Plate Bullet + ANPR	
Ordering Information		VSIP2MPFBIRMTV2: Edge Enhancement	VSIP2MPFBIRMTN: Edge Enhancement + Automatic Number Plate Recognition	
Camera	Image Sensor	1/2.8" 2.0MP Progressive Scan CMOS		
	Effective Pixels	1920 (H) x 1080 (V)		
	RAM / ROM	1024MB / 128MB		
	Min Illumination	0.005 Lux/F1.6 (Color), 0 Lux/F1.53 (IR on)		
	S/N Ratio	> 50dB		
Infrared System		4 x Infrared LED, 10m range, Auto/manual on/off control		
Lens	Lens / Iris	2.7 ~ 12mm F1.6 Motorised Varifocal Lens with Auto Iris		
	Field of View	Horizontal: 101°~36°, Vertical: 53°~20° (4x Optical Zoom)		
	Focus	Auto Focus / 3m Min. Focus Distance		
Video	Resolution	1080p (1920 x 1080) to CIF (352 x 288)		
	Frame Rate	Main	1080p (1 ~ 25fps)	
		Sub	D1 (1 ~ 25fps)	
		Third	N/A	
	Video Compression	H.265 / H.264		
	Bit Rate	32 ~ 16384Kbps		
	Bit Rate Control	Constant bit rate (CBR) / Variable bit rate (VBR)		
	Day/Night	Auto (ICR) / Color / B&W		
	Lighting Compensation	BLC / HLC / WDR (140dB)		
	White Balance	Auto / Manual		
Gain Control	Auto / Manual			
Noise Reduction	3D DNR			
Picture Control	Mirror / Flip (0°, 90°, 180°, 270°)			
IVS	Intelligent Functions	Number Plate Edge Enhancement	Number Plate Edge Enhancement, Number Plate Recognition, Loop/Video Detection, Snapshot, OSD (Time, Location, Number Plate, Lane No.), White List (up to 10000), Barrier Control (1ch Relay Out)	
Network	Ethernet	RJ-45 (10/1000 Base-T)		
	Protocol	IPv4v6; HTTP; TCP/IP; UDP; NTP; DHCP; DNS		
	Streaming Method	Unicast / Multicast		
	Max. User Access	10 Users / 20 Users		
Interface	Video Interface	N/A		
	Audio Interface	1 Input / 1 Output		
	Alarm Interface	2 Input / 1 Output		
	RS485	N/A		
	Edge Storage	MicroSD Card Slot (up to 128GB) / NAS / Local PC		
Environmental	Interoperability	ONVIF / SDK / CGI		
	Power Supply	12VDC / PoE+ (802.3af) (Class 4)		
	Power Consumption	<12W		
	Operating Conditions	-40° ~ +60° C / Less than 95% RH		
	Ingress Protection	IP67		
	Vandal Resistance	IK10		
	Housing	Metal		
	Pan/Tilt/Rotation	Pan: 0° ~ 360°; Tilt: 0° ~ 90°; Rotation: 0° ~ 360°		
	Dimensions	273 x 95 x 96mm		
Net Weight	1.12kg			
Application	Mounting Options			
				
		Junction Box VSBKTA121	Pole Mount VSBKTA121 + VSBKTA152E	Corner Mount VSBKTA121 + VSBKTA151

Your local VIP Vision™ IP solutions professional: