



The peak of performance.

Ultimate Series: Intelligent motorised lens bullets, in 2.0MP & 12.0MP

Experience the best in surveillance with the Ultimate Series. These bullets offer the best in resolution and feature an extensive list of intelligent functions, including defogging, people counting, heat mapping, EIS and much more.

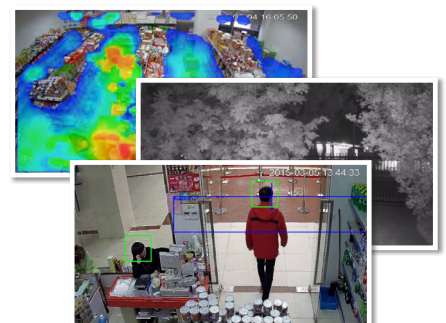
- Stream beyond 4K at 12.0MP (4000 x 3000) at 20fps
- Excellent low light performance; colour at 0.002 lux
- Motorised lens & auto iris for up to 4x optical zoom
- Up to 50m smart infrared; true day/night (auto ICR)
- MicroSD slot for recording at the edge up to 128GB
- H.265 high efficiency video compression technology
- Face detection & electronic image stabilisation
- Backlight/highlight compensation and WDR
- Alarm and audio interface; tester video output
- Full metal IP67/IK10 weather/vandal rated housing



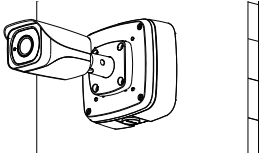
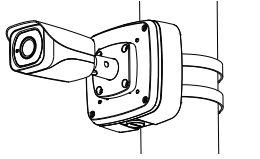
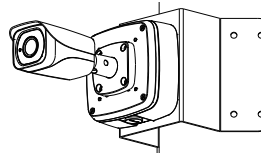



Record at Beyond Ultra HD Quality



Exceptional Camera Functionality



Extensive Intelligent Functions

Specifications		2.0MP Motorised Bullet	12.0MP Motorised Bullet	
Camera	Ordering Information	VSIP2MPFBIRLV3: Standard	VSIP12MPFBIRMV2: Standard	
	Image Sensor	1/1.9" 2.0MP Progressive Scan CMOS	1/1.7" 12.0MP Progressive Scan CMOS	
	Effective Pixels	1920 (H) x 1080 (V)	4000 (H) x 3000 (V)	
	RAM / ROM	1024MB / 128MB		
	Min Illumination	0.002 Lux/F1.53 (Color), 0 Lux/F1.53 (IR on)	0.02 Lux/F1.53 (Color), 0 Lux/F1.53 (IR on)	
	S/N Ratio	> 50dB		
Lens	Infrared System	4 x Infrared LED, 50m range, Auto/manual on/off control		
	Lens / Iris	4.1 ~ 16.4mm F1.53 Motorised Varifocal Lens with Auto Iris	4.1 ~ 16.4mm F1.53 Motorised Varifocal Lens with Auto Iris	
	Field of View	Horizontal: 104°~33°, Vertical: 57°~18° (4x Optical Zoom)	Horizontal: 85°~35°, Vertical: 63°~26° (4x Optical Zoom)	
DORI	Focus	Auto Focus / 0.5m Min. Focus Distance		
	Detect (25px/m)	57m (wide) / 137m (tele)	115m (wide) / 227m (tele)	
	Observe (63px/m)	23m (wide) / 55m (tele)	46m (wide) / 111m (tele)	
	Recognise (125px/m)	11m (wide) / 27m (tele)	23m (wide) / 55m (tele)	
	Identify (250px/m)	6m (wide) / 14m (tele)	11m (wide) / 28m (tele)	
Video	Resolution	1080p (1920 x 1080) to CIF (352 x 288)	12.0MP (4000 x 3000) to CIF (352 x 288)	
	Frame Rate	Main	1080p (1 ~ 50fps)	12.0MP (1 ~ 20fps) / 8.0MP (1 ~ 25fps)
		Sub	D1 (1 ~ 50fps)	D1 (1 ~ 25fps)
		Third	1080p (1 ~ 50fps)	1080p (1 ~ 25fps)
	Video Compression	H.265+ / H.265 / H.264+ / H.264		
	Bit Rate	H.265: 14 ~ 6144Kbps / H.264: 24 ~ 10240Kbps	H.265: 14 ~ 9984Kbps / H.264: 24 ~ 16384Kbps	
	Bit Rate Control	Constant bit rate (CBR) / Variable bit rate (VBR)		
	Day/Night	Auto (ICR) / Color / B&W		
	Lighting Compensation	BLC / HLC / WDR (120dB) / SSA	BLC / HLC / Digital WDR / SSA	
	White Balance	Auto / Natural / Street Lamp / Outdoor / Manual		
Gain Control	Auto / Manual			
Noise Reduction	3D DNR			
Picture Control	Mirror / Flip (0°, 90°, 180°, 270°) (VSIP12MPFBIRMV2: Resolution must be at 4.0MP or lower for corridor mode)			
Network	Intelligent Functions	Tripwire, Intrusion, Object Abandoned/Missing, Face Detection, Motion Detection (4 zones), Region of Interest (4 zones), Privacy Masking (4 zones), Smart Infrared, Electronic Image Stabilisation, Defog, People Counting, Heat Map		
	Ethernet	RJ-45 (100/1000 Base-T)		
	Protocol	HTTP; HTTPS; TCP; ARP; RTSP; RTP; UDP; RTCP; SMTP; FTP; DHCP; DNS; DDNS; PPPOE; H.265; H.264; TCP; ARP; RTSP; RTP; UDP; SMTP; FTP; DHCP; DNS; DDNS; PPPOE; IPv4/IPv6; QoS; UPnP; NTP; Bonjour; IEEE 802.1x; Multicast; ICMP; IGMP; SNMP; TLS		
	Streaming Method	Unicast / Multicast		
Interface	Max. User Access	10 Users / 20 Users		
	Video Interface	Video Tester Composite Output		
	Audio Interface	1 Input, 1 Output / Compression: G.711a, G.711mu, AAC, G.726		
	Alarm Interface	2 Input / 1 Output		
	RS485	N/A		
	Edge Storage	MicroSD Card Slot (up to 128GB) / NAS / Local PC		
Environmental	Interoperability	ONVIF / PSIA / CGI		
	Power Supply	12VDC / PoE+ (802.3at) (Class 4)		
	Power Consumption	<13W		
	Operating Conditions	-40° ~ +60° C / Less than 95% RH		
	Ingress Protection	IP67		
	Vandal Resistance	IK10		
	Housing	Metal		
	Pan/Tilt/Rotation	Pan: 0° ~ 360° ; Tilt: 0° ~ 90° ; Rotation: 0° ~ 360°		
Dimensions	Ø273mm x 95mm x 96mm			
Net Weight	1.12kg			
Application	Mounting Options			
				
		Junction Box VSBKTA121	Pole Mount VSBKTA121 + VSBKTA152E	Corner Mount VSBKTA121 + VSBKTA151

Your local VIP Vision™ IP solutions professional: