

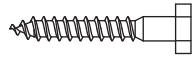
LCD/LED/ Plasma Wall Bracket Instruction of LCDBKT-A50T

1. Technical Parameter

Size of flat panel TV:37"-70"; Maximum load:50kg(110lbs);
Tilt adjustable:+0~-10° ;Distance from wall:43mm;vesa:600x400

2. Part List

Please check the parts in the package in comparison with the following list.
Make sure all of the parts in the package. Never use defective parts.
Never replace part with different specification



(A) Self-tap Screw(4)



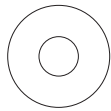
(B) Plastic Anchor (4)



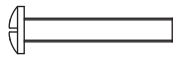
(C) Square Washer (4)



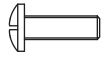
(D) Plastic Sleeve (4)



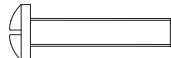
(E) ø8 Flat washer(4)



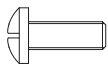
(F) M5*30(4)



(G) M5*15(4)



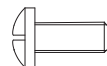
(H) M6*30(4)



(I) M6*15(4)



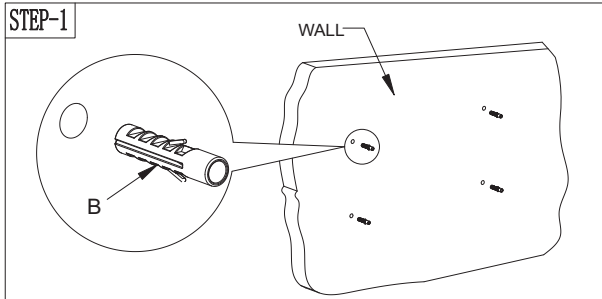
(J) M8*30(4)



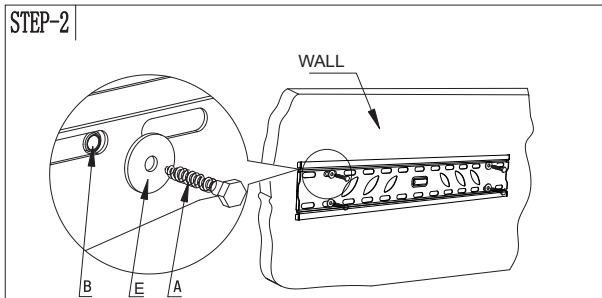
(K) M8*15(4)

3. Installation and operation instruction

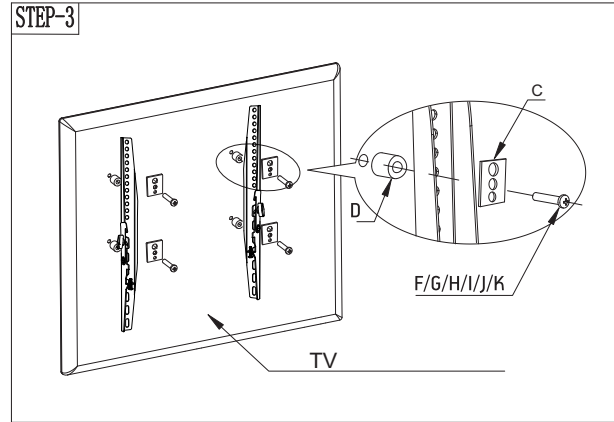
Note: please read the instructions carefully before installation



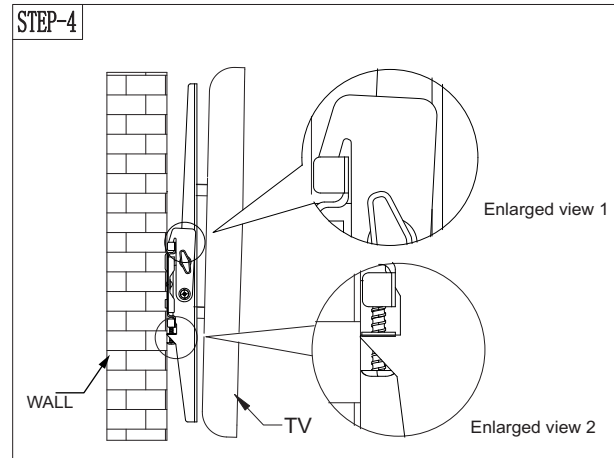
Step 1:
Use the wall plate as a template to drill four holes of dia. 10mm and 50mm depth in the wall or the hard wood wall. Then wedge four plastic anchors into the holes.



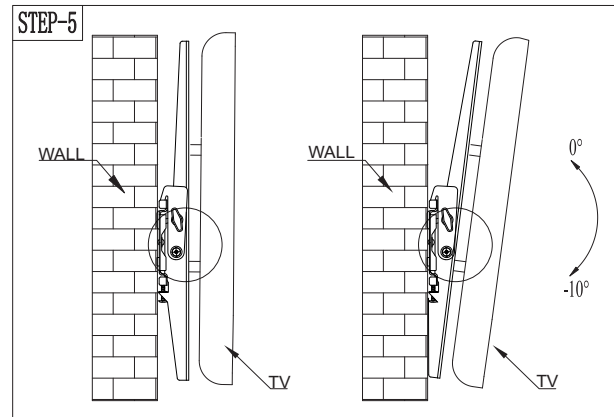
Step 2:
Install the wall plate. Put the wall plate on the wall, and then screw four self-tap screws into each plastic anchor through metal washer to fix the wall plate onto the wall.



Step 3:
Install the bracket rail onto the back of the TV: Select suitable screws from the screw package according to the size of the holes in the back of TV. Fix the two hanging arms onto the back of TV by screws into the holes. Make sure equal height of the two hanging arms.



Step 4:
Enlarged view 1: hang the two monitor brackets on the wall plate, relax the hands until they are caught hold of.
Enlarged view 2: Fix the two bolts under the monitor brackets inside of the wall plate and then screw them down.



Step 5:
Adjust the angle of the panel TV between -10 and 0 degrees to a suitable position, and screw the knobs up at last.