



TRADE SPECIALS

Exclusive trade only specials across our range

JUN 2021



CCTV | ALARMS | INTERCOMS | ACCESS CONTROL | LED LIGHTING
NETWORKING | SOLAR BATTERY SYSTEMS | APPLIANCES

New Villawood Branch Now Open!
See back for details

Made in Italy - New Fumagalli Light Fixtures
See p.26 for more

4-Page Solar CCTV tear-out brochure inside
Win more business



It's time for you to win more jobs

Profit from RhinoCo's 43 years of industry knowledge & expertise

Contact us today • (02) 9671 6711 • sales@rhino.com.au • www.rhino.com.au

Industry leading **4 year warranty** offered on all professional products

Well known, unique & protected brands to add value to your installs

We will **match or better pricing** for any directly comparable product

Local & free expert technical support on our entire product range



Complete IP CCTV solutions



6.0
MEGAPIXEL



Pro AI Fixed Lens IP CCTV Kits

- 4 & 8 channel kits with 6.0MP fixed lens AI cameras
- AI people/vehicle detection via IVS and SMD+
- Search playback by person and vehicle detection events
- Up to 60m IR, Tripwire/Intrusion, audio/alarm I/O, IP67
- Your choice of cameras; black or white turret dome
- SkyHawk Surveillance-grade HDDs in 1TB/2TB/4TB
- Incl. data patch lead & HDMI, camera cable sold separately

Mix & Match
Available in white & black housing styles



NVRKIT-C461F
(4 Channel, 1TB)

NVRKIT-C862F
(8 Channel, 2TB)

Add monitor & data cable

Add a 24" LCD Monitor
Available for all CCTV kits

LCDACER24-S
(24", 1080p)



Data Cable / Patch Leads

CAT5BLU-47MM
(Blue 305m Pullbox)
NETCABLE10 (10m)
NETCABLE20 (20m)
NETCABLE30 (30m)





Compact Fixed IP CCTV Kits

- 4 & 8 channel kits with 4MP or 8MP fixed cameras
- Choose your camera - mix & match dome, turret, bullet
- Up to 30m infrared, tripwire/Intrusion, full metal, IP67
- SkyHawk Surveillance-grade HDDs in 1TB/2TB/4TB
- Incl. data patch lead & HDMI, camera cable sold separately

Mix & Match

Turret, Dome or Bullet Cameras



4.0MP Compact Fixed IP Kits

Compact NVR + 4.0MP 2.8mm domes, turrets or bullets

NVRKIT-C441F
(4 Channel, 1TB)

NVRKIT-C842F
(8 Channel, 2TB)



8.0MP Compact Fixed IP Kits

Compact NVR + 8.0MP 2.8mm domes, turrets or bullets

NVRKIT-C482F
(4 Channel, 2TB)

NVRKIT-C884F
(8 Channel, 4TB)



Pro Motorised IP CCTV Kits

- 4 & 8 channel kits with 4MP or 8MP motorised cameras
- Choose your camera - mix & match dome, turret, bullet
- Up to 60m IR, tripwire/Intrusion, audio/alarm I/O, IP67
- SkyHawk Surveillance-grade HDDs in 1TB/2TB/4TB
- Includes patch & HDMI cable, camera cabling sold separately

Mix & Match

Turret, Dome or Bullet Cameras



4.0MP Pro Series VF IP Kits

Pro NVR + 4.0MP Motorised VF bullet, dome or turret

NVRKIT-P441M
(4 Camera + 1TB)

NVRKIT-P842M
(8 Camera + 2TB)



8.0MP Pro Series VF IP Kits

Pro NVR + 8.0MP Motorised VF bullet, dome or turret

NVRKIT-P482M
(4 Camera + 2TB)

NVRKIT-P884M
(8 Camera + 4TB)



NVRs with the best warranty & tech support Australia-wide

Network Video Recorders Up to 16 Channels | Up to 2 x HDD Bays | PoE



Compact Series Network Video Recorders

- Records up to 4K Ultra HD resolution (3840 x 2160)
- Power over Ethernet systems with 4/8/16 PoE ports
- Decode up to 2 channels at 4K / 8 channels at 1080p (25fps)
- 1/2 x SATA port up to 10TB, max. 10/20TB HDD capacity
- Motion detection recording & record scheduling
- HDMI & VGA simultaneous video output
- Backup via external USB device or local network
- Remote view in seconds with setup via QR code
- Live view, playback & record via your phone/tablet



NVR4COM3
(4CH, 4 PoE, 1 HDD)

NVR8COM3
(8CH, 8 PoE, 1 HDD)

NVR16COM3
(16CH, 16 PoE, 2 HDD)



Pro Series Network Video Recorders

- Records up to 12.0MP resolution (4000 x 3000)
- Power over Ethernet systems with 4/8/16/24 PoE ports
- Up to 4 x SATA port up to 10TB, max. 40TB HDD capacity
- Motion detection recording & record scheduling
- Remote view in seconds with setup via QR code
- Native Ultra HD live view on 4K monitors via HDMI
- Backup footage via network, USB or SATA devices
- Live view, playback & record via your phone/tablet



Pro Series NVRs with PoE

NVR4PRO4
(4CH, 2 HDD)

NVR8PRO7
(8CH, 2 HDD)

NVR16PRO7
(16CH, 4 HDD)

NVR24PRO6
(24CH, 4 HDD)

NVR32PRO16P3
(32CH, 16 PoE, 4 HDD)

Non-PoE Pro NVRs (320Mbps)

NVR16PRO6NP
(16CH, 2 HDD)

NVR32PRONP2
(32CH, 4 HDD)



Professional Series AI PoE NVRs

- Face analysis & databases for Face Recognition applications
- Search by face, create whitelist/blacklist, stranger alarm mode
- Perimeter protection by NVR; enables function on standard cams
- Alerts & playback via face recognition & perimeter protection
- Record beyond 12.0MP with 320Mbps incoming bandwidth
- Up to 320Mbps incoming bandwidth, H.265+ support
- 16 port PoE (8 x ePoE), 2/4 x HDD bays, alarm input/output
- Use Ultimate AI Series cameras for face recognition up to 16CH
- Native Ultra HD live view on 4K monitors via HDMI

NVR16PRO-I
(16CH, 16PoE, 2 HDD)

NVR32PRO16P-I
(32CH, 16PoE, 4 HDD)



Ultimate Series 32/64CH NVRs

- High performance surveillance with Intel® Core™ processors
- Record up to 12.0MP resolution (4000 x 3000), beyond 4K/Ultra HD
- 8 x SATA ports up to 10TB, max. 80TB HDD capacity
- Hot-spare & hot-swapping support (64CH only)
- 384Mbps incoming bandwidth to handle large number of inputs
- RAID profiles support for HDD optimisation and redundancy
- 2 x gigabit RJ45 inputs, Alarm I/O programmable relay outputs
- Live view, playback & record via your phone/tablet

NVR32ULTNPV2
(32CH, No PoE, 8 HDD)

NVR64ULT8S
(64CH, No PoE, 8 HDD)



System Management CCTV, Intercom & Access Control | DSS System



IP System Management Centre

- Centralised CCTV, access control & intercom management
- Set different access rights hierarchies per user/group
- Manage building access w/ RFID tag & fingerprint scan
- Event & alarm logging, searching, timestamp & overlay
- Manual and automatic system backup/restore
- Built-in 1TB HDD - supports 3x 2.5" HDDs for storage
- High reliability with hot standby & hot swapping

NVR-SMC1
(DSS System)



*Monitors not included



The best selection of IP cameras for your next CCTV installation

Compact & Pro Cameras | Fixed & Motorised | 4.0MP to 4K | Intelligent Video Functions



Compact Series Fixed IP Cameras

- Available in 4.0MP and 8.0MP / 4K models
- Stream up to 8.0MP (3840 x 2160) at 15fps
- 2.8mm fixed lens with up to 105° viewing angle
- 30m infrared range; true day/night (auto ICR)
- H.265 encoding for efficient storage & streaming
- 3D digital noise reduction & true WDR (120dB)
- Tripwire and intrusion smart video detection rules
- PoE/12VDC, IP67 metal housing, IK10 (*domes only*)

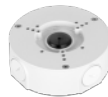


4.0MP & 8.0MP Fixed Lens Cameras

VSIPC-4BIRS2 (4.0MP Bullet)
VSIPC-4DIRD2 (4.0MP Dome)
VSIPC-4DIRG2 (4.0MP Turret)

VSIPC-8BIRS (8.0MP Bullet)
VSIPC-8DIRD (8.0MP Dome)
VSIPC-8DIRG2 (8.0MP Turret)

Camera Brackets



VSBKTA130E
(Junction Box,
Bullet/Turret)



VSBKTA137
(Junction Box,
Dome)



VSBKTA152E
(Pole Mount)



VSBKTB203W
(Wall, Dome)
VSBKTB204W
(Wall, Turret)



Pro Series Motorised IP Cameras

- Stream up to 8.0MP (3840 x 2160) at 15fps
- 2.7 ~ 13.5mm motorised varifocal lens (112°~46°)
- Up to 60m infrared range; true day/night (auto ICR)
- 3D digital noise reduction & true WDR (120dB)
- IVS smart video functions incl. tripwire and intrusion
- 1CH audio & 1CH alarm input/output (*bullet & vandal*)
- H.265 encoding, IP67 rated, 12VDC/PoE



Motorised Bullets

VSIPP-4BIRMG (4.0MP) VSIPP-8BIRMG (8.0MP)

Junction Box (VSBKTA135 / 122 / 130E)
Pole Mount (VSBKTA152E + Box)

Motorised Vandal Domes

VSIPP-4DIRMD (4.0MP) VSIPP-8DIRMD (8.0MP)

Junction Box (VSBKTA137 / 123)
Wall Mount (VSBKTB203W)

Motorised Turrets

VSIPP-4DIRMG (4.0MP) VSIPP-8DIRMG (8.0MP)

Junction Box (VSBKTA137 / 130E)
Wall Mount (VSBKTB203W)



Professional AI Series Cameras

- AI people/vehicle detection via IVS & motion detection
- Search playback by person and vehicle detection events
- Up to 8.0MP (3840 x 2160) at 20fps (25fps without AI enabled)
- 2.8mm fixed lens & 2.7~13.5mm motorised lens models



- IR up to 60m, starlight, true WDR, microSD, IP67 / IK10 (dome)
- Built-in microphone or RCA input for audio across the range

4.0MP Fixed Lens

- VSIPP-4BIRG-I (Bullet)
- VSIPP-4DIRD-I (Dome)
- VSIPP-4DIRG2-I (Turret)
- VSIPP-4DIRF-I (Wedge)

6.0MP Fixed Lens Turret

- VSIPP-6DIRG-I (White)
- VSIPP-6DIRG-I-B (Black)

8.0MP Fixed Lens

- VSIPP-8BIRG-I (Bullet)
- VSIPP-8DIRD-I (Dome)
- VSIPP-8DIRG-I (Turret)

4.0MP Motorised VF Lens

- VSIPP-4BIRMG-I (Bullet)
- VSIPP-4DIRMD-I (Dome)
- VSIPP-4DIRMG-I (Turret)

8.0MP Motorised VF Lens

- VSIPP-8BIRMG-I (Bullet)
- VSIPP-8DIRMD-I (Dome)
- VSIPP-8DIRMG-I (Turret)



Ultimate AI Series Cameras

- AI people detection for people counting; flow control use
- People counting / flow control supported by standard NVRs
- Face Capture for up to 16CH face recognition with AI NVR*
- AI people/vehicle detection via IVS & smart motion detection



- Search playback & receive alerts via face database matching*
 - Search playback by person and vehicle detection events
 - 1/1.18" sensor, auto iris (DC), True WDR (120dB), ePoE support
 - Alarm/audio I/O (excl. turret), MicroSD, IP67, IK10 (domes only)
 - Heater for use in up to -40°C operating temperature
- * Requires Pro AI Series NVR for face recognition integration

4.0MP Standard Lens (2.7 ~ 12mm)

- VSIPU-4BIRM-I (Bullet)
- VSIPU-4DIRM-I (Dome)
- VSIPU-4DIRMG-I (Turret)

4.0MP Zoom Lens (8 ~ 32mm)

- VSIPU-4BIRM-IZ (Bullet)
- VSIPU-4DIRM-IZ (Dome)

8.0MP Standard Lens (2.7 ~ 12mm)

- VSIPU-8BIRM-I (Bullet)
- VSIPU-8DIRM-I (Dome)



Win more jobs with our new AI PTZ & specialty cameras

Pro AI Series PTZ Cameras Auto Tracking | Person & Vehicle Detection



Pro AI Series PTZ Speed Domes

- Complete outdoor AI CCTV coverage with up to 32x optical zoom, endless 360° panning and -15°~90° tilt
- AI people/vehicle identification via IVS & motion detection
- Search playback by person and vehicle detection events
- Trigger alerts using AI functions including people & vehicle detection via IVS rules or via motion detection (SMD+)
- Stream up to 8.0MP at 25fps - also available in 2.0MP & 4.0MP
- Starlight performance in low-light (0.005lx) & 150m infrared
- 1/1 alarm and 2/1 alarm interfaces (input/output)
- MicroSD slot, H.265+, true WDR (120dB), IP67 & IK10 rated
- Incl. bracket for wall mount; ceiling drop mount sold separately

VSIPPTZ-2IRP-I
(2.0MP, 25x Zoom)

VSIPPTZ-4IRP-I
(4.0MP, 32x Zoom)

VSIPPTZ-8IRP-I
(8.0MP, 25x Zoom)



Pro AI 4.0MP PTZ Dome

- Pro AI Series: auto-tracking via person/vehicle
- 355° pan and 5° ~ +90° tilt adjust.
- Stream 4.0MP@25fps; 2.8 ~ 12mm (32~97°)
- Starlight; min. colour illumination 0.005lx
- 15m IR, IVS, true WDR, audio I/O, IP66, PoE+
- IK08 vandal resist, compact Ø128mm x 65mm

VSIPPTZ-4IRM-I
(4.0MP PTZ)



Pro AI 2.0MP Positioning Camera

- Pro AI Series: auto-tracking via person/vehicle
- Endless 360° pan and -90° ~ +90° tilt adjust.
- Stream 2.0MP@50fps; 4.8 ~ 120mm (61~2.8°)
- Starlight; min. colour illumination 0.005lx
- 150m IR, IVS, true WDR, audio/alarm I/O, IP67, PoE+ (price includes wall mount)

VSIPPTZ-2IRW-I
(2.0MP PTZ)

VSBKTB730W
(Wall mount)





Pro AI Series Deterrence Turrets

- Siren & red/blue LED light activate on trigger to deter intruders
- Customise LED light for always-on or flashing on trigger
- Customise your own siren tone or recording to play on trigger
- Speak remotely via the smartphone/tablet application
- Trigger alerts using AI functions including people & vehicle detection via IVS rules or via motion detection (SMD+)
- Stream up to 8.0MP at 20fps, fixed lens 2.8mm (107°)
- 24/7 Colour performance in low-light as low as 0.0015lx
- Built-in microphone and 1/1 alarm interface (input/output)
- MicroSD slot, H.265+, true WDR (120dB), IP67 rated

VSIPP-2DG-ID (2.0MP Turret) VSIPP-4DG-ID (4.0MP Turret) VSIPP-8DG-ID (8.0MP Turret)



Activates loud siren & flashing strobe light in response to IVS events, eg. Tripwire & Intrusion and AI Perimeter Protection at set times



AI Infrared Fisheye Domes

- Cover 360° day & night with a single camera
- Available in 5MP and 12MP, each with AI features
- Ceiling/floor/wall dewarp modes, ePTZ, ePanorama
- Each model has a built-in mic, audio & alarm I/O
- 5MP@25fps and 12MP@25fps, 10m infrared
- 5MP: AI area people counting for up to 4 separate areas
- 12MP: AI queue management & area people counting

VSIPFE-5IR-I (5.0MP)

VSIPFE-12IR-I (12.0MP)



Dual Lens People Counting Camera

- AI people counting via tripwire or region
- Superior accuracy with 'stereo' dual lenses
- Export data & visualise with heatmap
- 3.0MP@25fps with 2 x 2.8mm lens (106°)
- 10m IR and true day/night (auto ICR)
- True WDR (120dB), BLC/HLC modes
- Built-in microphone, IP67 weather rated

VSIPDL-3IR (Dual Lens Camera)



2.0MP AI Motorised ANPR Bullet

- Automatic number-plate recognition (ANPR)
- White/blacklist control; auto gate control via ANPR
- Identify vehicle size, colour & direction with AI
- 2.0MP@25fps, 2.7~13.5mm (119°~32°) auto iris, true WDR, HLC, shutter speed windowing, microSD, IP67

VSIPNP-2BIRM-I (2.0MP)



4.0MP Split-System Pinhole Camera

- Lens module can be mounted away from body
- 4.0MP@25fps with 2.8mm lens module (83°)
- Tripwire & intrusion, micro SD slot, true WDR
- Ø31 x 49mm lens module; 8m cable length
- Power via 12VDC or PoE

VSIP4MPPHM (Body) VSIP4MPPHC (Lens)



2.0MP WDR Pinhole Camera

- 2.0MP@25fps with 2.8mm lens (105°)
- Video analytics: tripwire, intrusion
- True WDR, 50cm cable length
- 45x58x35mm incl. bracket
- Power via 12VDC only

VSIPPH-2S (2.0MP)



The latest AI coaxial systems for superior analogue upgrades

HDCVI Cameras Fixed & Motorised Lens | Up to 5.0MP | 24/7 Colour



Compact 2.0MP HDCVI Bullet
2.0MP@25fps, 3.6mm (83°), 20m IR, HD/SD switchable video out, full metal, IP67, 12VDC

VSCVI-2BIRC (Bullet)
VSCVI2MPDIRV5 (Turret)



Pro 2.0MP Motorised Bullet
2.0MP@25fps, 2.7~13.5mm (109~29°), 80m IR, true WDR, CVI/AHD/TVI/SD, 0.005lx, audio, IP67, 12VDC/24VAC

VSCVI2MPFBIRMV4 (2.0MP)



Pro 2.0MP Motorised Dome
2.0MP@25fps, 2.7~13.5mm (109~29°), 30m IR, true WDR, CVI/AHD/TVI/SD, 0.005lx, IP67/IK10, 12VDC/24VAC

VSCVI2MPVDIRMV4 (2.0MP)



24/7 Colour 2.0MP Turret
2.0MP@25fps, 3.6mm (90°), 0.001lx 24/7 colour, true WDR, built-in mic, CVI/AHD/TVI/SD, IP67 12VDC

VSCVI-2DFCG (2.0MP)



Pro 5.0MP HDCVI Bullet
5.0MP@20fps, 2.8mm (98°), 40m IR, 0.005lx, true WDR, built-in mic, CVI/AHD/TVI/SD DIP switch, IP67, 12VDC

VSCVI-5BIR2.8E (2.8, 5.0MP)



Pro 5.0MP Motorised Bullet
5.0MP@20fps, 2.7~13.5mm (102~29°), 80m IR, true WDR, CVI/AHD/TVI/SD, 0.005lx, audio, IP67, 12VDC/24VAC

VSCVI-5BIRMG (5.0MP)



Pro 5.0MP Motorised Dome
5.0MP@20fps, 2.7~13.5mm (109~29°), 30m IR, true WDR, CVI/AHD/TVI/SD, audio, IP67/IK10, 12VDC/24VAC

VSCVI-5DIRMD (5.0MP)



Pro 5.0MP Motorised Turret
5.0MP@20fps, 2.7~13.5mm (109~29°), 60m IR, true WDR, CVI/AHD/TVI/SD, built-in mic, IP67, 2VDC/24VAC

VSCVI-5DIRMG (5.0MP)



Pro Series 8.0MP HDCVI Cameras

Huge 1/2" sensor, 8.0MP@15fps, Ultra Low Light 0.005lx, true WDR (120dB), 2.8mm (111°), 3.7~11mm (112~46°), HDCVI/AHD/TVI/SD switchable, 12VDC

VSCVI-8BIRG
(8.0MP Bullet)

VSCVI-8BIRP
(8.0MP PIR Bullet)

VSCVI-8DIRMG
(8.0MP VF Turret)



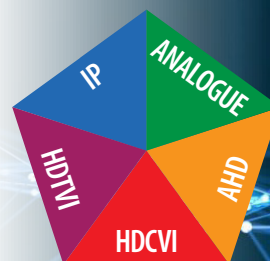
Professional Series AI HDCVI DVRs

- **AI features:** Face recognition, person & vehicle detection
- Up to 6 channels face recognition (2CH for 8/16CH DVR)
- Up to 6 channels AI tripwire/intrusion (2CH for 8/16CH DVR)
- Full channel support for AI person/vehicle motion detection
- Each DVR records up to 4K / 8.0MP (3840 x 2160) at 7fps
- Each DVR supports HDCVI, HDTVI, AHD, Analogue & IP inputs
- H.265; HDMI/VGA, remote view for iOS & Android devices
- * AI features for HDCVI input only (no IP channel support)

CVR8PRO4
(8CH, 2 HDD)

CVR16PRO4
(16CH, 2 HDD)

CVR32PRO4
(32CH, 8 HDD)



AI People & Vehicle Detection



Face Recognition



Compact Series HDCVI DVRs

- Records up to 4K / 8.0MP (3840 x 2160) at 7fps
- Supports HDCVI, HDTVI, AHD, Analogue & IP inputs
- 1 x HDD up to 10TB, H.265, HDMI/VGA, remote view

CVR8COM
(8CH, 8.0MP)

CVR16COM
(16CH, 8.0MP)



Power & Video Cable Accessories

4K video/power leads (chain up to 2 x 30m); camera PSUs

- VIDPWR20RG59** (20m Power/BNC)
- VIDPWR30RG59** (30m Power/BNC)
- PS12VDC700-4** (4 camera PSU)



Ethernet over Coax Devices

Repurpose existing coaxial cable for use with IP CCTV systems, including Power over Ethernet

- VSEOCPAIRV2** (Eth over Coax)
- VSEOC-ATX** (Transmitter)
- VSEOC-ARX** (Receiver)



Passive HDCVI to CAT5E/6 Balun Pair

Minimise wiring costs by transmitting HDCVI / comp. video over CAT5E/6 cable instead of coax

- VSBALHDP** (HDCVI over UTP)

Solar power systems for CCTV, lighting, WiFi, access and more

Solar Powered Systems 56W - 180W Solar Panels | 218Wh - 1200Wh Lithium Battery

ENSA™

Create Solar Powered Systems

- Solar systems to power your next installation
- Pre-configured & ready for implementation
- Use for lighting, CCTV, WiFi, access & more
- High conversion rate monocrystalline panels
- Large capacity lithium batteries (LiFePO₄)
- Fully adjustable LED lighting modules
- 180lm/W with microwave motion sensor
- Set parameters with included remote
- 12.8V and 25.6VDC input voltage
- Optional bird spike strip included
- Ø50~60mm diameter pole mount

*Pole/base not included with SSL-B units, sold separately



56W Solar System

56W Monocrystalline Panel
218Wh LiFePO₄ Battery
20W 180lm/W LED Area Light
145 x 75° Beam Angle
12.8VDC Output Voltage

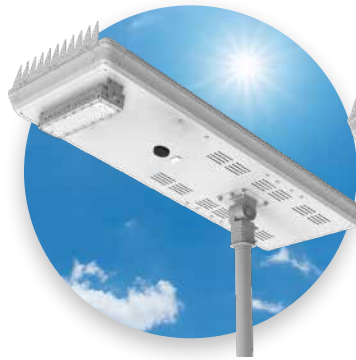
SSL-B20MC



80W Solar System

80W Monocrystalline Panel
320Wh LiFePO₄ Battery
30W 180lm/W LED Area Light
145 x 75° Beam Angle
12.8VDC Output Voltage

SSL-B30MC



120W Solar System

120W Monocrystalline Panel
500Wh LiFePO₄ Battery
50W 180lm/W LED Area Light
145 x 100° Beam Angle
12.8VDC Output Voltage

SSL-B50MC



180W Solar System

180W Monocrystalline Panel
1200Wh LiFePO₄ Battery
60W 180lm/W LED Area Light
145 x 100° Beam Angle
25.6VDC Output Voltage

SSL-B60MC



The ultimate worksite solar CCTV solution.

Deliver 24/7 site protection with VIP Vision™ 4G solar surveillance solutions with 4G, AI PTZ and timelapse functions. Now with new pole and base.



Solar Powered Surveillance

- 120W & 180W Solar Systems + AI surveillance
- Fully configured and ready for installation
- Remote view via 4G* or 5GHz wireless links
- 4.0MP IR PTZ included, other options available*
- Surveillance grade microSD storage included
- 500Wh or 1200Wh high capacity batteries

*SIM sold separately, camera changes may increase cost. Built pole & base delivery dependent on area, contact your sales rep for details.

SLR-B120-4G/4W
(120W Panel, 4G/WiFi)

SLR-B180-4G/4W
(180W Panel, 4G/WiFi)



Hinged Pole & Concrete Base Kits

- **Pole:** 4.5m tall hinged galvanised pole, no need for ladder or for working at heights
- **Base:** Heavy duty base 500kg, reinforced for extra strength, available assembled or unassembled

SLR-POL4.5H
(4.5m hinged pole)

SLR-POLBASE
(Unassembled)

SLR-POLCONC
(Assembled Base)





Scalable IP intercom systems, perfect for homes & apartments

Intercom Door Stations Residential & Apartment Systems | Card / Code Unlock



1.0MP Residential IP Door Station

- Calls up to 10 monitors, unlock via NFC card
- 1/2.8" 1.0MP fixed lens camera (122°)
- 12VDC / PoE with 12VDC power output for strike
- Alarm I/O, RS485 I/O and tamper detection
- Polycarbonate construction, surface mount

INTIPRDSJ
(1.0MP)



2.0MP IP & 2-Wire Door Station

- Calls up to 10 monitors, use in 2-wire installs
- 1/2.8" 2.0MP ultra-wide angle camera (160°)
- 12VDC / PoE with 12VDC power output for strike
- Alarm I/O, RS485 I/O, tamper detection
- Aluminium construction, flush/surface box

INTIPRDSG (Door Station)
INTIPRDSGFB (Flush Box)
INTIPRDSGSB (Surface Box)



2.0MP Residential IP Outdoor Station

- Calls up to 10 monitors, unlock via code or card
- 1/2.8" 2.0MP ultra-wide angle camera (158°)
- 12VDC / PoE with 12VDC power output for strike
- Alarm I/O, RS485 I/O and tamper detection
- Aluminium construction, flush/surface box

INTIPRDSG (Door Station)
INTIPADSDFB (Flush Box)
INTIPADSDSB (Surface Box)



2.0MP 2-Button IP Door Station

- Call 2 x monitor sets, up to 10 monitors/button
- 1/2.8" 2.0MP wide lens (140°), NFC card reader
- 12VDC / PoE with 12VDC power output for strike
- Alarm I/O, RS485 I/O and tamper detection
- Surface mount, aluminium construction

INTIPDDS2
(2.0MP)



2.0MP 4-Button IP Door Station

- Call 4 x monitor sets, up to 10 monitors/button
- 1/2.8" 2.0MP wide lens (140°), NFC card reader
- 12VDC / PoE with 12VDC power output for strike
- Alarm I/O, RS485 I/O and tamper detection
- Surface mount, aluminium construction

INTIPDDS4
(2.0MP)



2.0MP Apartment IP Outdoor Station

- Connect up to 200 monitors; calls individuals
- 1/2.8" 2.0MP ultra-wide angle camera (158°)
- Unlock via user codes & NFC card reader
- 12VDC / PoE with 12VDC power output for strike
- Alarm I/O, RS485 I/O and tamper detection

INTIPADSD (Door Station)
INTIPADSDFB (Flush Box)
INTIPADSDSB (Surface Box)



Residential & Apartment IP Monitor

- 7" TFT capacitive touchscreen (800 x 480 pixels)
- Add microSD card for up to 32GB storage
- Record / snapshot video calls/messages; DND
- INTIPMONPOE: PoE switch for apartments for monitor PoE power; connect up to 6 monitors

INTIPMON (White)

INTIPMONPOE (PoE Switch)



Residential IP PoE Indoor Monitors

- New 10" touchscreen (1024 x 600 pixels) model
- 7" TFT capacitive touchscreen (1024 x 600 pixels)
- 8GB internal storage; add microSD up to 32GB
- Record / snapshot video calls/messages; DND
- Power via PoE or 12VDC; avail. in black or white

INTIPMONGB (7" Black)

INTIPMONGW (7" White)

INTIPMONGBL (10" Black)



Residential IP PoE Handset Monitors

- 7" TFT capacitive touchscreen (1024 x 600 pixels)
- Wall-mounted design with built-in handset
- Record and snapshot video calls/messages
- Prevent unwanted calls with Do Not Disturb
- Power via PoE or 12VDC; avail. in black or white

INTIPMONDBH2 (Black)

INTIPMONDWH2 (White)

INTIPMONDH-B (Desktop Bkt)



J Series Residential IP Intercom Kit

PoE network intercom for new systems.

- 1 x Residential IP intercom door station with built-in NFC access card reader & PoE
- 1 x 7" touchscreen indoor monitor (black)
- 1 x 5-port 10/100M PoE switch with incl. PSU

INTIPRKITJ
(Complete Kit)



G Series Residential IP Intercom Kit

PoE network & upgrades using same cabling.

- 1 x Residential IP intercom PoE door station
- 1 x 7" touchscreen indoor monitor (white)
- 1 x 5-port 10/100M PoE switch & PSU
- 1 x Surface mount box for door station

INTIPRKITG (Complete Kit)
INTIPRDSGSB (Surface Box included)
INTIPRDSGFB (Flush Box, optional)



2-Wire Residential Intercom Kit

Upgrade existing intercoms using same cabling.

- 2.0MP residential door station (box sold sep.)
- Surface mount 7" touchscreen indoor monitor
- Optional 2-wire network switch to enable remote view functions & provide power to 6 monitors

INTIPRDSG (Door Station)
INTIPRDSGFB/SB (Flush/Surface)
INTIPMON2W (7" Monitor)
INTIPPOE2W (2-Wire Switch)



4-Wire Analogue Intercom Kit

Quick replacement for 4-core & 6-core intercom systems.

- 1 x Residential analogue door station
- 1 x 7" touchscreen indoor monitor (white)
- 1 x Mounting bracket for door station
- 1 x 12VDC PSU

INTKIT-A1
(Complete Kit)



Door Unlock Expander Module

Enables an indoor monitor to control second door or gate via RS485.

- NO/NC relay, 12VDC

INTIPDM
(Expander)



Professional & Compact IP Access Controllers

- Quick-install, affordable access control in small to medium enterprise
- Available in 2-door 2-way, 4-door 1 & 2-way & 8-door 1-way controllers
- Access management & CCTV integration via free Smart PSS software
- Cascade up to 255 slave controllers for over 2000 total door capacity
- Configure users/roles & departments; up to 100,000 cards & 150,000 records
- Anti-passback, multi-door unlock, multi-card open, door time-out & more
- **ACCON-2C41:** Compact plastic body, 4 x readers, 9/5 input/output, 9~15VDC
- **ACCON-2P22:** Pro metal body, 4 x readers, 8/4 input/output, 240VAC
- **ACCON-2P41:** Pro metal body, 4 x readers, 9/5 input/output, 240VAC
- **ACCON-2P42 & 2P81:** Pro metal body, 8 x readers, 20/12 input/output, 240VAC

ACCON-2C41
(Com, 4-door 1-way)

ACCON-2P22
(Pro, 2-door 2-way)

ACCON-2P41
(Pro, 4-door 1-way)

ACCON-2P42 / 2P81
(Pro, 4-door 2-way)
(Pro, 8-door 1-way)



13.56MHz Access Control Readers

Professional card, keypad & fingerprint access readers, LED indicators & backlit buttons, tamper protection

- ACRDR-2PC:** Card reader, IP67 rated, 9~15VDC
- ACRDR-2LKC:** Large card reader & touch keypad, IP55 rated, 9~15VDC
- ACRDR-2MKC:** Metal-body card reader & keypad, IP55/IK08, hard buttons, 9~15VDC

- ACRDR-2SC:** Slim card reader, IP65 rated, 5~16VDC
- ACRDR-2SKC:** Slim card reader & touch keypad, IP65 rated, 5~16VDC
- ACRDR-2SFC:** Slim card reader & fingerprint reader (up to 3000 records), IP55 rated, 9~15VDC

ACRDR-2PC

ACRDR-2LKC

ACRDR-2MKC

ACRDR-2SC

ACRDR-2SKC

ACRDR-2SFC



200m Access Control Cables

- Designed for access control systems
- **AC200G:** 200m 6-core shielded, tinned copper access control cable
- **APAC200G:** 200m 1 x 6-core access control cable, 1 x 4-core & 6-core alarm cable, 1 x figure 8 power cable

AC200G
(Access only)

APAC200G
(Composite)



ACLOC100

ACLOC101

ACLOC104

ACLOC102

ACLOC105

MAGLOC100S

MAGLOC100M

MAGLOC-UB/LZ



Mortise & Surface Electric Door Strikes

- High quality electric door strikes for intercoms & access control
- **#100:** Steel, mortise, fail-secure, 12VDC
- **#101:** Steel, surface, fail-secure, 12VDC
- **#104:** Chrome, surface, fail-secure, 12VDC
- **#102:** Stainless steel, mortise, fail-safe/secure, monitored, 12VDC
- **#105:** Stainless steel, mortise, fail-safe/secure, monitored, 12V/24VDC and 12V/24VAC convertible voltage



Electro Magnetic Door Locks

- High quality electro magnetic locks
- Fail-safe / direct pull configuration
- Rated at 270kg holding force
- 12VDC / 24VDC power input
- Anodised aluminium, zinc finish
- Mortise (100M) & surface (100S) mount
- Add Z or U bracket for suitable doors

Best in vehicle monitoring with the Securview Mobile Series

Mobile Surveillance Systems 4 & 8 Camera Systems | GPS Tracking | Online Platform



4 & 8 Channel Mobile HDCVI DVRs

- **Avail. in 4 or 8 channels, each with precision GPS, 4G & WiFi**
- Support for HDCVI and analogue video inputs, 1 x VGA / 2x TV outputs
- Backup via USB/network, lockable HDD/SIM tray, M12 camera inputs
- 7/2 alarm input/output, 6~36VDC power input, CAN bus support
- **4CH:** Records 2.0MP at 2CH + 1.0MP at 2CH at 25fps
- **8CH:** Records 2.0MP at 25fps across 8 channels
- 1 x 2.5" SATA port & SD card slot
- 2 x 2.5" SATA port & SD card slot

MCVR-GPS4GW
(GPS/4G/WiFi)

MCVR-GPS8GW
(GPS/4G/WiFi)

VSCVI2MPDIRAT
(Mini Dome)

VSCVI2MPCIRAT
(Bumper Cam)

VSCVI2MPWTT
(Dash Camera)

VSCVI2MPVDIRFTV3
(IK10 Dome)

VSCVI2MPBT.8
(Barrel Camera)



Full HD
1080



2.0MP HDCVI Mobile Series Cameras

- All cameras include heavy duty M12 connector for mobile / vehicle use
- **Mini Dome:** 2.0MP, 3.6mm (83°), 20m IR, built-in mic, IP67 rated
- **Bumper:** 2.0MP, 3.6mm (83°), 20m IR, built-in mic, IP67 rated
- **Dash Camera:** Road & cabin, 2 x 2.0MP, wide angle, built-in mic
- **IK10 Dome:** 2.0MP, 2.8mm (111°), 20m IR, IK10/IP67 rated
- **Barrel Camera:** 2.0MP, 2.8mm (109°), electronic day/night, Ø30mm



MDVR-J400

4G Vehicle Monitoring & GPS Tracking System

- 1080p road-facing camera & separate B&W cabin camera
- Real-time, precision GPS tracking; geo-fencing, tracking playback
- Voice chat and live view video at any time from connected app
- Driver behaviour live alerts for speed, g-sensor & more
- Manage multiple units & send device commands on phone or PC
- Free lifetime licence for online tracking platform & phone app
- Incl. power harness, mounting kits, alarm button, relays & more

MDVR-J400
(SIM card, phone & SD card not included)





FLASHVIEW™

Build impressive video walls up to 9 displays & 144 channels

Display Accessories | Network Video Decoders | HDMI Splitters & Extenders



VIP Vision™ Network Video Decoders

- Network-roaming decoder displays all video feeds
- Video wall splicing for up to 36 channels per monitor
- Split screen control with zoom/merge/roam/overlay
- Support for audio, alarm, two-way talk, RS232, RS485
- Fisheye dewarp & multi-video split display
- Manage via web browser or VIP Vision™ SmartPSS
- **NVD-A4:** Decode 8CH 4K / 36CH 1080p / 144CH D1
- **NVD-A9:** Decode 12CH 4K / 48CH 1080p / 144CH D1

NVD-A4
(4 x HDMI Out)

NVD-A9
(9 x HDMI Out)



Huge Displays:
Up to 9x Any Size TV!



FLASHVIEW™ 2-way 4K Ultra HD HDMI Splitter

- 1 x HDMI input, 2 x HDMI output
- Supports up to 4K Ultra HD & 3D video
- Easy plug-and-play installation
- Includes 5VDC power supply

HDMI-SPL2P3
(HDMI Splitter)



FLASHVIEW™ HDMI Extender Over CAT6 (50m)

- Transmit HDMI signal over 50m via CAT6
- Supports up to Full HD 1080p & 3D video
- Up to 225MHz/2.5Gbps bandwidth
- Includes 2 x 5VDC 1A power supplies

HDMI-EXT50M
(HDMI over CAT6)



NEW

FLASHVIEW™ Fibre Optic HDMI Cable

- High performance optical fibre cable
- Supports up to 4K output at 60Hz
- High speed 18Gbps data transfer
- Type-A to Type-A

HDMI-10F (10m)
HDMI-20F (20m)



Easy to run through walls

FLASHVIEW™ Fibre Optic HDMI Cable (Detachable Connector)

- High performance optical fibre cable
- 4K@60Hz, high speed 18Gbps transfer
- Type D detachable connector

HDMI-10FC (10m)
HDMI-20FC (20m)
HDMI-30FC (30m)
HDMI-50FC (50m)

Professional has a new look.

VIP Vision™ security cabinets are the all-in-one CCTV, alarm & access control storage solution.



*Monitor not included



Vertical Wall Mount Security Cabinet

- Compact; only 580(W) x 635(H) x 180(D)mm (closed)
- Capacity: 2RU, 240~480mm width, 465mm depth
- Fit up to 24" monitor, with 50/75/100 VESA mounts
- Integrated 4 x outlet powerboard & 2 x cabinet locks
- Cable management knockouts from all cabinet sides
- Superior ventilation; optional 2 x 50mm cooling fans
- 30kg cabinet load bearing capacity (10kg vertical shelf)
- 440mm width between mount points to fit wall studs
- SPCC steel construction and white powder coating
- *Vertical cable input orientation recommended*

SECCAB
(2RU Cabinet)



Open the cabinet for easy configuration, then fold it away to save space and keep the system secure.



Create high speed networks that connect your installations

Ethernet & PoE Switches Up to 24 Ports | 10/100M Hi-PoE | Gigabit | Accessories



4 & 8 Port PoE+ DIN Rail Ethernet Switches

- Fast 100Mbps PoE+ device ports
- 1x 1000M Base-T & 1x Base-X uplinks
- 30W/port & HiPoE 60W (orange ports)
- PoE Load: 60W (-SW4H), 96W (-SW8H)
- DIN rail mountable

VSPOE-SW4H
(4 port, 60W)

VSPOE-SW8H
(8 port, 96W)



PoE Midspan, Injector & Extender

PoE Midspan & Extender: 60W midspan, Delivers PoE to IP cameras up to 300m (<8W per cam) via 3 x PoE extenders (VSPOE-EX)

PoE Injector: 30W PoE+, 1000Mbps, 240VAC

VSPOE-MS
(Midspan)

VSPOE-EX
(Extender)

VSPOE-IN30
(Injector)



Desktop Fast Hi-PoE Switches

- 1 x 100Mbps Base-T uplink (4 port)
- 2 x 1000Mbps Base-T uplinks (8 port)
- 30W per port + 1 x 60W Hi-PoE port
- PoE load: 60W (-SWA4), 96W (-SWA8G)

VSPOE-SWA4
(4 port, 100M)

VSPOE-SWA8G
(8 port, 100M)



Desktop Gigabit Hi-PoE Switch

- Gigabit 1000Mbps PoE+ device ports
- 7 x 1000Mbps PoE+ Base-T device ports
- 1 x 1000Mbps Hi-PoE Base-T device port
- 30W per port + 1 x 60W Hi-PoE port
- Total PoE load: 96W (-SWB8G)

VSPOE-SWB8G
(8 port, 100M)



Rackmount Fast Hi-PoE Managed Switches

- Fast 100Mbps PoE+ Base-T device ports
- Gigabit 1000Mbps Base-T & SFP Base-X uplink ports
- L2 Managed switch for security & switch customisation
- 30W per port with 2 x 60W orange Hi-PoE ports
- Total PoE load: 240W (-SWA16), 360W (-SWA24)
- Rackmount tabs for cabinet mounting

VSPOE-SWA16
(16 port, 100M)

VSPOE-SWA24
(24 port, 100M)



Rackmount Gigabit Hi-PoE Managed Switches

- Gigabit 1000Mbps PoE+ Base-T device ports
- 2 x SFP Base-X uplink ports for fibre backbone
- L2 Managed switch for security & switch customisation
- 30W per port with 2 x 60W orange Hi-PoE ports
- Total PoE load: 240W (-SWB16G2), 360W (-SWB24G2)
- Rackmount tabs for cabinet mounting

VSPOE-SWB16G2
(16 port, 1000M)

VSPOE-SWB24G2
(24 port, 1000M)



WiFi & 4G made for CCTV.

Enjoy the best in reliability and quick wireless setup with Longevity high speed WiFi & 4G access points.

Pre-configured wireless links to save you on install time.



Pre-Configured 5.8GHz Wireless AP Bridges

- Point-to-point & point-to-multipoint applications
- We program units for plug & play, saving you time
- 5.8GHz wireless access point, 900Mbps transfer speeds
- Up to 5km point-to-point range, line of sight (H:60° / V:30°)
- PoE; pole & wall mount kits included; IP65 weather resistant



LGAP300
(Single Unit)

LGAP300-PACKA
(2 x Wireless APs)

LGAP300-PACKB
(3 x Wireless APs)



*SIM card not included



2.4/5.8GHz Wireless AP

- Build & extend WiFi access
- Dual antennas 2.4/5.8GHz
- Up to 1300Mbps transfer rate
- PoE; IP65 for outdoor use

LGAP200
(1300Mbps)



4G LTE Wireless Access Point

- 4G LTE transfer to wired & WiFi network
- Functions as a router/access point
- 2 x 2.4GHz & 1 x 4GHz antennas
- Power micro-USB or PoE

LGAP100-4G
(300Mbps, 4G)



Simple config via DIP switches: no PC required for basic setup.



DIP Switch 5.8GHz Wireless AP

- DIP switch config - no PC for basic setup
- 2 x 10/100/1000Mbps LAN ports
- Maximum 867Mbps wireless link speed
- Up to 2km max range line of sight
- PoE injector or switch required

LONGEVITYCOM007
(Single unit)

Prevent surveillance footage loss & protect CCTV equipment with Socomec™ UPS



NETYS PE Series UPS - 650VA to 2000VA (Step Wave)

- Connect devices easily via multiple Australian standard sockets
- AVR stabilises output voltage, avoid needless switching to battery mode
- Integrated RJ45 protection against line overvoltage for LAN/ADSL

UPS650VA: 650VA/360W, 2 sockets, LED indicators, ~28min@72W

UPS850VA: 850VA/480W, 2 sockets, LED indicators, ~26min@95W

UPS1000VA: 1000VA/600W, 4 sockets, LCD info display, ~44min@120W

UPS1500VA: 1500VA/900W, 4 sockets, LCD info display, ~32min@180W

UPS2000VA: 2000VA/1200W, 4 sockets, LCD info display, ~24min@240W



NETYS PR Series UPS - 1000VA to 2000VA (Sine Wave)

- Pure sine waveform for greater stability and system compatibility
- Connect devices easily via IEC320 sockets (appliance couplers)
- AVR stabilises output voltage, avoid needless switching to battery mode
- Integrated RJ45 protection against line overvoltage for LAN/ADSL

UPS1000VA-S: 1000VA/700W, 4 sockets, LCD info display, ~44min@120W

UPS1500VA-S: 1500VA/1050W, 6 sockets, LCD info display, ~32min@180W

UPS2000VA-S: 2000VA/1400W, 6 sockets, LCD info display, ~24min@240W



NETYS PR Series UPS - 1700VA to 3300VA (Sine Wave)

- Professional functions & appearance, easy rackmount or tower use (2U)
- Connect devices via IEC320 standard sockets (up to 8 x 10A, 1 x 16A)
- Battery hot-swap whilst in operation, load segmentation, 0.9 power factor
- Integrated RJ45 protection against line overvoltage for LAN/ADSL

UPS1700VAXCRM: 1700VA/1350W, 8 sockets, LCD info display, ~30min@270W

UPS2200VAXCRM: 2200VA/1800W, 8 sockets, LCD info display, ~47min@360W

UPS3300VAXCRM: 3300VA/2700W, 9 sockets, LCD info display, ~31min@540W



1100VA Rackmount Line Interactive Tower UPS

- Only 330mm depth UPS for installation in 19" 450mm deep cabinets
- LCD screen with status indication (load / alarm / fault / capacity, etc.)
- Pure sine waveform for greater stability and system compatibility
- 1100VA/900W battery capacity, 230VAC rated input voltage
- Integrated RJ45 protection against line overvoltage for LAN/ADSL
- Connect devices via 6 x IEC320 standard sockets (10A)
- AVR stabilises output voltage, avoid needless switching to battery mode
- USB port & HID protocol as standard for direct interfacing with Windows PCs
- RS232 for management of power supply and local/remote shutdown

UPS1100VA-ORM: 1100VA/900W, 6 sockets, LCD info display, ~32min@180W

All body temperature systems priced to clear



Temperature Monitoring Access Control Station

- Standalone face recognition & BTM access module with WiFi
- Create fast, contactless temperature screening checkpoints
- Controls access from unauthorised persons & temp threshold
- BTM & access event alerts via email & device push notifications
- 7" LCD display and touchscreen with 600 x 1024 resolution
- Monitor face temperatures & features mask detection
- Face detection from a distance of 0.3m to 2.0m
- Voice responses to direct users and allow/deny entry
- 1/2.8" 2.0MP CMOS image sensor with WDR
- Admin unlock via face, card, password or a combination
- 2/2 alarm input/output, RS485, RS232, Wiegand
- Contactless scanning in a compact, slim body

VS IPT-MACT
(Terminal only)

VS IPT-MACT-S (Pedestal Stand)
VS IPT-MACT-D (Desktop Stand)



Body Temperature Measurement System

- Set body temperature alerts ranging from 30°C to 45°C
- High temperature accuracy with $\pm 0.3^\circ\text{C}$ margin of error
- Built-in light & buzzer, with additional alarm outputs
- Temperature test covers up to 15 people simultaneously
- Stream up to Full HD/1080p (1920 x 1080) at 25fps
- One IP address/channel for thermal & visible images
- Uncooled VOx thermal sensor (256x192 pixels)
- Audio & alarm input/output, IP67 rated body & PoE
- Extended warranty & blackbody calibration sold separately

VS IPT-2BTS

(Includes camera, calibration target,
2 x tripods and mount kits)



Non-Contact IR Forehead Thermometers

- Measure temperatures from a distance up to 3~5cm away in as little as one second, between 32°C ~ 42.9°C
- LCD backlit display changes colour depending on temp. taken
- Suitable to measure the temperatures of bodies and objects

TST-TEMP2
(1 Button)

TST-TEMP1
(3 Button)



* Products shown above are not a replacement for TGA-approved medical-grade devices or a professional medical opinion. Images for illustrative purposes only, actual experience may differ.



Watchguard™ professional building security & accessories

Professional Hardwired Security 8-64 Zone Panel | Professional Accessories



Watchguard 864 Alarm Systems

Professional 8/64 Zone Panel & Keypad + IP Module

- 8 zone panel & keypad, expandable up to 64 zones
- 8 partitions, up to 5 programmable outputs (expandable up to 25)
- 3 quick arm modes: Away / Stay (with & w/o delay)
- Dedicated panic zone & monitored siren output
- Easily programmable via windows PC (module sold separately)
- HYYIP IP module for complete phone control; connect panel to the Internet via hardwired or WiFi network connection; arm/disarm, bypass, trigger outputs & configure notifications

WGAP864PB (Panel + black keypad)

WGAP864PW (Panel + white keypad)

WGAP864IPMW (IP Module)



WiFi Support



TAKEX

Wide Angle & Curtain PIRs

- PIR detectors, 11m range, 84° beam
- **Pet immune:** Immune up to 20kg
- **Curtain:** Vertical beam up to 16.5m
- High performance, made in Japan
- Tamper switch, built for indoor use
- Wall/ceiling mount bracket available

PIR-T45WP (Pet Immune)

PIR-T46C (Curtain PIR)

PIR-T4BKT (Bracket)



Hardwired Reed Switches

- **RSW-M Series:** Heavy duty, up to 50mm gap, 10W contact rating, (M1-silver, M1W-white, M1B-brown)
- **RSW-P Series:** Indoors, up to 19mm gap, 3W contact rating, ABS plastic (P1-white, P1G-grey, P1B-brown)

RSW-M1 (Silver)

RSW-P1 (White)

See above for colour options



Hardwired Siren/Strobe

- Polycarbonate construction
- 120dB siren and blue strobe
- Battery backup for each model
- Adjustable siren timers
- For sheltered use; under eaves
- Front case & wall tamper switches

WGSIR-500 (Square)

WGSIR-900 (Rounded)



12VDC 7Ah Sealed Lead Acid Battery

- Maintenance free
- Non-spillable construction
- Power failure backup battery
- 5 year lifespan

D12V7A



Watchguard Force WiFi Alarm Kit

- Control & monitor the alarm system via Smart Home app
 - Receive email and push notifications for alarm events
 - Versatile security for residences, offices and stores
 - Reliable backup with 6 hours of battery backup & SMS notifications in the event of a power outage*
 - Contact ID for back to base monitoring capabilities*
 - Up to 50 wireless sensors, 10 remotes & 50 RFID tags
- * 4G SIM for, SMS & B2B monitoring; Alexa; phone not incl.

ALL-PACK1
(WG Force Pack)



Watchguard Force Alarm Accessories

- ALL-PIR1: Indoor PIR sensor + reed switch
- ALL-PIR2: Indoor PIR sensor
- ALL-PIR3: Outdoor PIR sensor
- ALL-RSW1: Vibration sensor + reed switch
- ALL-RSW2: Reed switch
- ALL-SMD1: Smoke detector
- ALL-BEAM1: Infrared beam sensor
- ALL-SIR1: Outdoor siren & strobe
- ALL-SIR2: Indoor AC siren

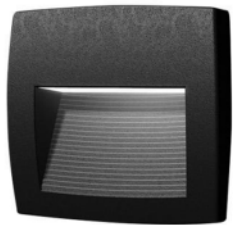


ALL-PIR1 ALL-PIR2 ALL-PIR3 ALL-RSW1 ALL-RSW2 ALL-SMD1 ALL-SIR1 ALL-SIR2



Stylish light fixtures from Fumagalli

With housing styles ranging from modern to ornate, Fumagalli lights, poles and brackets are your solution for high-end outdoor lighting jobs. All products developed and manufactured in Varese, Italy.



Lorenza Surface LED Lamps

FU-LOR-3G (3W, Grey)
FU-LOR-3B (3W, Black)



Abram Small LED Bulkheads

FU-ABR-3G (3W, Grey)
FU-ABR-3B (3W, Black)



Ceci Recessed LED Floor Lamps

FU-CEC-6G (6W, Grey)
FU-CEC-6B (6W, Black)



Carlo Round LED Bollards

FU-CAR-6G (6W, Grey)
FU-CAR-6B (6W, Black)



Pina Bulkhead LED Bollard

FU-PIN-18B (18W, Black)



Francy Large LED Bulkheads

FU-FRA-6G (6W, Grey)
FU-FRA-6B (6W, Black)



Nina Recessed LED Wall Lamps

FU-NIN-7G (7W, Grey)
FU-NIN-7B (7W, Black)



Ester Square LED Bollards

FU-EST-10G (10W, Grey)
FU-EST-10B (10W, Black)

Versatile lighting with poles, brackets & bases



Gino Classic LED Lamps

FU-GIN-60G (60W, Grey)
FU-GIN-60B (60W, Black)

Giorgio LED Floodlights

FU-GIO-40G (40W, Grey)
FU-GIO-40B (40W, Black)

All Gino & Giorgio lights have a Ø60mm pole socket for modular mounting

Febo Small Pole

FU-FEB-1B (1m, Black)

Ektor Large Poles

FU-EKT-25G (2.5m, Grey)
FU-EKT-25B (2.5m, Black)

FU-EKT-4G (4m, Grey)
FU-EKT-4B (4m, Black)

FU-EKT-6G (6m, Grey)
FU-EKT-6B (6m, Black)



Midipilar Pole Brackets

FU-MID-P1G (Single, Grey)
FU-MID-P1B (Single, Black)

FU-MID-P2G (Double, Grey)
FU-MID-P2B (Double, Black)

FU-MID-P3G (Triple, Grey)
FU-MID-P3B (Triple, Black)

New Lot Flat Base

FU-NEW-G (Grey)
FU-NEW-B (Black)



*All poles come with a suitable cage
(4 different types) for mounting*

*Resin-coated poles
with hollow interior*



Midipilar Wall Brackets

FU-PIL-WG (Grey)
FU-PIL-WB (Black)





AVOL
The genius of electricity

ENSA™

Save on LED floods: Designed for security & energy efficiency

Flood Lighting 20W to 960W | Superb Light Output | Motion Activated



LFL-H Series: Driver-on-Board LED Flood Lighting

- 80lm/W luminous efficacy, 6000K cool white colour temp.
- Wide 120° beam angle, 35,000hr rated lifespan
- Lightweight aluminium, adjustable U-bracket, IP66 rated
- Integrated, on-board LED driver for streamlined installation

LFL-H50-C (50W) **LFL-H100-C (100W)** **LFL-H150-C (150W)** **LFL-H200-C (200W)** **LFL-H50-CS (50W + Sensor)**



ENSA™

LFL-C2 Series: Sensor Flood Lights

- 120lm/W luminous efficacy, 120° beam, >80 CRI
- Adjustable PIR detection up to 12m with a 140° arc and adjustable on-time delay (5s ~ 5min)
- 5000K cool white, 35,000hrs rated LED lifespan
- 180° adjustable U-bracket, IP65 weather rated

LFL-C20-CS2-5 (20W, 2400lm)

LFL-C30-CS2-5 (30W, 3600lm)

LFL-C50-CS2-5 (30W, 6000lm)



ENSA™

LFL-G2 Series: Adjustable LED Floods

- **Superb 160lm/W luminous efficacy, >80 CRI**
- Available in 240W, 360W, 480W, 720W & 960W
- 180° adjustable U-bracket to direct luminaires
- Incredible 100,000hrs rated LED lifespan
- 5000K cool white colour temperature
- Wide 60°x100° beam angle models (30° optional)
- IP67 weather rated; ideal for sporting grounds

LFL-G240-C2 (240W 38,400lm, 2 x LED modules)

LFL-G360-C2 (360W 57,600lm, 3 x LED modules)

LFL-G480-C2 (480W 81,600lm, 4 x LED modules)

LFL-G720-C2 (720W 115,200lm, 6 x LED modules)

LFL-G960-C2 (960W 153,600lm, 9 x LED modules)



Great deals on ENSA floods.

Deliver incredible results with ENSA LED flood lights, with superior light output and energy efficiency.



ENSA™

LFL-B2 Series: Professional LED Flood Lighting

- Available in 20W, 30W, 50W, 80W, 100W, 150W & 200W
- Superb 150lm/W luminous efficacy, >70 CRI
- 180° adjustable U-bracket to direct entire luminaire
- Outstanding 50,000hrs rated LED lifespan
- 3000K/5000K warm or cool white colour temp.
- Wide 120° beam angle, circular light distribution
- IP65 weather rated, Lumiled LEDs, 5 year warranty

LFL-B20-W2 (20W, 3000K)
LFL-B20-C2 (20W, 5000K)

LFL-B30-W2 (30W, 3000K)
LFL-B30-C2 (30W, 5000K)

LFL-B50-W2 (50W, 3000K)
LFL-B50-C2 (50W, 5000K)

LFL-B80-C2 (80W, 5000K)

LFL-B100-C2 (100W, 5000K)

LFL-B150-C2 (150W, 5000K)

LFL-B200-C2 (200W, 5000K)



AVOL ENSA™
The genius of electricity

High performance lighting for commercial & industrial jobs

LED Street Lighting Up to 200W | Dusk/Dawn Sensor | Multiple Accessories



LSL-C Series: LED Street Lighting

- Available in 50W, 100W, 150W and 200W models
- 110lm/W luminous efficacy, 6000K cool white colour temp.
- 90° x 130° beam angle, 35,000hr rated lifespan, IP65 rated
- Lightweight aluminium, Ø54mm (50W) / Ø62mm pole slip-fit
- Integrated, on-board LED driver for streamlined installation

LSL-C50-C
(50W 5500lm)

LSL-C150-C
(150W 16,500lm)

LSL-C100-C
(100W 11,000lm)

LSL-C200-C
(200W 22,000lm)



ENSA™

LSL-B Series: LED Area/Street Lights

- **Built in photocell models for dusk/dawn switching**
- Available in 150W and 200W models
- Versatile mounting with 5 adjustable light brackets
- Slip fit, fixed/adjust pole, trunnion & yoke wall mounts
- 135lm/W, 5000K cool white, >70 CRI, 50,000hrs lifespan
- 155 x 85° beam angle, 1~10V / PWM dimmable
- IP66/IK08 weather/vandal rated, 20KV surge protection

LSL-B150-CP
(150W 20,250lm)

LSL-B200-CP
(200W 27,000lm)



LSL-BKTS
(Slip Fitter)

LSL-BKTP
(Fixed Pole)



LSL-BKTA
(Adjust. Pole)

LSL-BKTT
(Trunnion)



LSL-BKTY100 (150W)
LSL-BKTY200 (200W)
(Yoke Wall)



Curved Pole Adapters
LSL-BKTC4 (Ø4" / 102mm)
LSL-BKTC5 (Ø5" / 127mm)
LSL-BKTC6 (Ø6" / 152mm)

High power, great flexibility.

Install large lighting jobs with precision with highly adjustable LFL-F Series Flood Lighting from ENSA™.

Lens beam options to suit your installation



ENSA™

LFL-F Series: High Power LED Floods

- Available in 480W, 720W and 960W models
- Lumileds LEDs exceptional light output (+165lm/W)
- 60° beam angle, >80 CRI, 6500K cool white, IP66
- Customise lighting for large areas perfectly with 360° rotate & 140° tilt individually adjustable LED modules
- **Ask us about lighting simulation & project assistance**

LFL-F480-C
(480W 79,200lm,
4LED modules)

LFL-F720-C
(720W 118,800lm,
6LED modules)

LFL-F960-C
(960W 158,400lm,
8LED modules)



LFL-F Series Lens Modules

- LFL-F-L10 (10° lens)
- LFL-F-L30 (30° lens)
- LFL-F-L60 (60° lens)



AVOL
The genius of electricity

ENSA™

The best in LED lighting for offices and warehouses

LED Panel Lighting 40W | 1200 x 300mm | Surface Mount

ENSA™

LPL-C Series: LED Panel Light

- Stylish 9mm thick light with modern minimalist design
- Perfect in offices, schools, retail, conference rooms & more
- Available in 40W with high 120lm/W luminous efficacy
- 4800K cool white, >80 CRI, 110° beam angle, IP20 rated
- 300 x 1200mm standard ceiling tiles hole cut size
- Brackets not included, sold separately

LPL-C40-C
(40W, 4800K)

LPL-C-S
(Surface Mount)



LED Sensor Battens 600/1200mm | Motion Sensing | Light Sensing | Emergency



140°
Microwave
90lm/W

ENSA™

S Series: IP65 LED Sensor Battens

- In 18W (1350lm) & 36W (3240lm) models
- Light & microwave motion sensor control light
- Set on-time duration & motion sensitivity
- On/off mode only (100% -> 0% brightness)
- 140° beam, 50,000hrs LED lifespan, IP65

LEDBT18WS
(18W, 600mm)

LEDBT36WS
(36W, 1200mm)



Microwave
2-Stage Dim
NSW ESS

ENSA™

S2 Series: IP65 LED Sensor Battens

- **Accepted for use in NSW Energy Saving Scheme**
- In 18W (1600lm) & 36W (3000lm) models
- Light & microwave motion sensor control light
- Adjustable 2 stage dim (100% -> Dim -> Off)
- 120° beam angle, 35,000hrs LED lifespan, IP65

LEDBT18WS2
(18W, 600mm)

LEDBT36WS2
(36W, 1200mm)



Emergency
2-Stage Dim
NSW ESS

ENSA™

SE Series: Emergency LED Battens

- **Accepted for use in NSW Energy Saving Scheme**
- In 18W (1600lm) & 36W (3000lm) models
- Light & microwave motion sensor control light
- 2hrs up-time backup battery, AS2293.3 app.
- 120° beam angle, 35,000hrs LED lifespan, IP65

LEDBT18WSE
(18W, 600mm)

LEDBT36WSE
(36W, 1200mm)



LHB-E Series: LED High Bay Lighting

- Available in 100W, 150W and 200W models
- 100lm/W luminous efficacy, 6000K cool white colour temp.
- 90° beam angle, 35,000hr rated lifespan, IP65 rated
- Lightweight aluminium, includes mounting eyelet
- Integrated, on-board LED driver for streamlined installation

LHB-E100-C (100W 10,000lm) **LHB-E150-C** (150W 15,000lm) **LHB-E200-C** (200W 20,000lm)



ENSA™

LHB-D Series: UFO High Bays

- Light-weight high bays in 100W, 150W & 200W
- 130lm/W, >80 CRI, 50,000hrs rated LED lifespan
- Compact IP66 weather rated body; metal eyelet
- 5700K cool white, 90° beam angle as standard
- Optional: 60° / 120° lenses; 180° U-bracket

LHB-D100-C (100W) **LHB-D150-C** (150W) **LHB-D200-C** (200W)



ENSA™

LHB-F Series: Food Grade High Bays

- Available in 100W, 150W or 200W models
- 135lm/W, >80 CRI, 50,000hrs rated LED lifespan
- IP69K rated for pressure cleaning in food prep facilities
- In 4000K & 5700K natural or cool white, 120° beam angle
- Separate output lead for 0~10V light control

LHB-F100-C/N (100W) **LHB-F150-C/N** (150W) **LHB-F200-C/N** (200W)



ENSA™

LBL-D Series: E40 Screw High Bay Bulbs

- Quick replacement for HID & metal-halide high bays
- Available in 100W and 160W E40 screw-fit LED bulbs
- Up to 125lm/W with >80 CRI; >25,000hrs LED lifespan
- In 4000K natural & 6500K cool white colour temperature
- Optional reflector to reduce glare and concentrate light

LBL-D100-E40C/N (100W, cool/natural) **LBL-D160-E40C/N** (160W, cool/natural)



ENSA™

Smarter lighting installations with ENSA intelligent sensors

Intelligent Lighting Sensor Floods | Oyster Lights | Sensor Switches

ENSA™ Intelligent Motion Sensor & Dusk/Dawn Switches



- 12m 180°
- Wall mount
- PIR detection
- IP65 rated
- 4m x 20m
- Corridors
- PIR detection
- IP20 rated
- Ø6m 360°
- Recessed
- PIR detection
- IP20 rated
- Ø20m 360°
- Ceiling mount
- PIR detection
- IP65 rated

ENSA-PS1

ENSA-PS2

ENSA-PS3

ENSA-PS4



- Ø8m 360°
- Concealed
- Microwave
- Indoor only
- 15m 180°
- Wall mount
- Microwave
- IP65 rated
- Ø16m 360°
- Ceiling mount
- Microwave
- IP20 rated
- 2 ~ 100 Lux
- DIN rail/probe
- Dusk/dawn
- IP65 rated
- 5 ~ 50 Lux
- Wall clip
- Dusk/dawn
- IP65 rated

ENSA-MS1

ENSA-MS6

ENSA-MS2

ENSA-LC3

ENSA-LC1W



ENSA™ 16W LED Oyster Lighting

Available in standard, sensor & sensor+battery backup models, 1200lm, 120° beam, 30,000hrs lifespan, 3000K or 5000K, IP66 and IK10 weather/vandal rated

LOL-A16-W/C
(Standard)

LOL-A16-WS2/CS2
(Standard)

LOL-A16-WSE/CSE
(Sensor & Battery)



Remote control any 240VAC load.

ENSA™

2CH Mains Voltage 433.92MHz Receiver

- Remote control any 240VAC load up to 1000W
- 2 relay outputs (latched/timed), 100m RF range LoS
- Trigger via wireless alarm sensors, eg: PIR/reed switch*
- Add up to 128 remotes or wireless alarm sensors
- IP55 rated for sheltered mounting, incl. 2 keyfobs



ENSA-RS1
*sensors sold separately

ENSA™

E27 and E40 Retrofit LED Bulbs

- 42W E27 & E40 screw-fit LEDs
- 120lm/W, >80 CRI, >25,000hrs lifespan, 4000K natural white
- Ø110mm x 275mm length
- 45W E27 screw fit LED bulbs
- 100lm/W, >80 CRI, >25,000hrs lifespan, 4000K natural white
- Ø138mm x 231mm length

LBL-D40-E27N
(Tulip, 40W, E27)

LBL-D42-E40N
(Tulip, 42W, E40)

LBL-D45-E27N
(Round, 45W, E27)

E27-E40BASE
(E27 to E40 Adapter)

Tube Lighting Run Out

Huge savings on ENSA™ LED tube lighting, in 2ft or 4ft, in standard and PIR motion detection models.



**HURRY
STOCK
LIMITED**

ENSA™

T8 Standard LED Tubes

- In 2ft (600mm) and 4ft (1200mm) models
- 100+lm/W efficacy, LED lifespan up to 30,000 hours
- Light weight, safe, full polycarbonate tube design
- Frosted diffuser for soft light eliminates LED glare
- Single ended AC input, incl. LED starter

LTU-A9-CW
(9W, 900lm)

LTU-A18-CW
(18W, 1800lm)

ENSA™

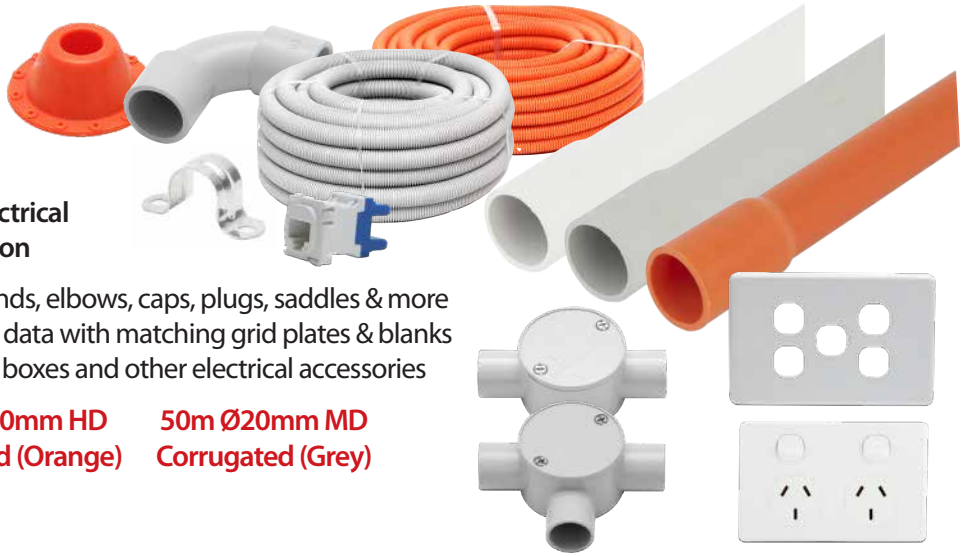
T8 PIR Sensor LED Tubes

- Available in 2ft (600mm) and 4ft (1200mm) models
- 80+lm/W efficacy, LED lifespan up to 50,000 hours
- 8m radius PIR sensor, 120° beam angle, >80 CRI
- Light features 60 sec on-time delay after last detected motion, then dims to 30% brightness
- Single ended AC input, incl. LED starter

LTU-C9-CS
(9W, 750lm)

LTU-C18-CS
(18W, 1800lm)

Accessories to support your next install



AVOL Electrical Range

New AVOL range of AS/NZS approved electrical accessories to support your next installation

- 4m rigid & corrugated conduit, sweep bends, elbows, caps, plugs, saddles & more
- Electrical mechs for switches, TV, USB and data with matching grid plates & blanks
- GPOs, light switches, plug bases, junction boxes and other electrical accessories

Ø20mm Comm Rigid (White)
 Ø20mm MD Rigid (Grey)
 Ø20mm HD Rigid (Orange)
 50m Ø20mm MD Corrugated (Grey)



Available at all of our locations - See our full range online



SECURVIEW

12VDC Power Supplies

- Available in 2A and 5A models
- Standard 2.1mm DC jack

PS2000SM (12VDC 2A)
PS5000SM (12VDC 5A)



SECURVIEW

Heavy Duty Surveillance Power Supplies

- 18 individually fused outputs; compact metal case, indoor use
- Thermal cutoff, short circuit, high voltage & over current protection

PS12VDC10A18CHB (12VDC 10A output)
PS24VAC10A18CH (24VAC 10A output)

*Battery not included



SECURVIEW

28W LED Flood IR Illuminator

- Flood style, IP66 rated, metal chassis
- Range with beam angle:
30° (170m) / 60° (100m) / 120° (50m)

VSIR28W30/60/120D
(30°, 60°, 120°)

It is our mission to support & inspire your installation business.

With the best brands in CCTV, alarms, access control and LED lighting.



Over 43 Years | Since 1978

M/L: 407530935

Contact us, shop online or visit our Sydney branches:

(02) 9671 6711 | sales@rhino.com.au | www.rhino.com.au

McGraths Hill

Head Office & Distribution
9 Hannabus Place
McGraths Hill, NSW 2756

Haberfield

Showroom & Sales Office
223-225 Ramsay Street
Haberfield, NSW 2045

Villawood

New location!

Showroom & Sales Office
577 Woodville Road
Guildford, NSW 2161

Exclusive Trade Only Specials. Released June 2021, supersedes all past offers, offers valid while stocks last. Pricing & product availability may be subject to change without notice; all prices exclude GST. Some offers may commence or extend beyond the promotional period. Errors & omissions excepted.