

AI People & Vehicle Detection

Face Recognition

AI Quick Search

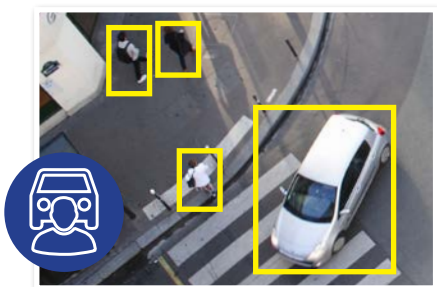


AI surveillance for business.

Professional AI Series: NVR available in 16 & 32 channels with 16 port PoE

Transform the way you secure your home or small business with VIP Vision™ Professional AI Series Network Video Recorders. Use superb accuracy AI detection to take the guesswork out searching footage and get important AI video notifications as they happen. Experience peace of mind with capacity for months of footage storage and integrate a huge range of cameras to protect what's most important to you.

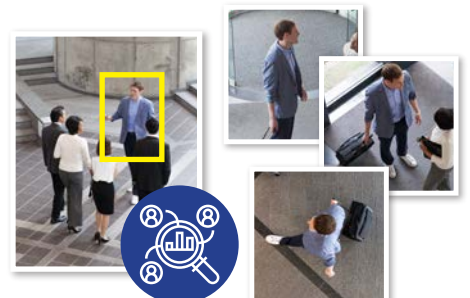
- Record up to 32.0MP with H.265 video compression
- Up to 384Mbps bandwidth (200Mbps AI enabled)
- Suite of AI functions for improved alerts & playback
- Supports AI face detection and recognition via NVR
- Supports AI human/vehicle detection via NVR
- Supports ANPR by camera up to 4 channels
- 4 x SATA bay with HDD support up to 16TB/bay
- Built-in 16 port Power over Ethernet switch
- HDMI (4K) and VGA simultaneous video output
- Backup via external USB device or local network



AI Human & Vehicle Detection



AI Face Detection & Recognition



Find Footage with AI Quick Search

		NVR16PRO16P-I3	NVR32PRO16P-I3	
General	Video Input	16 channel	32 channel	
	Processor & Operation	Industrial-grade processor, Embedded Linux OS, Web Interface / Local GUI		
	Interoperability	ONVIF 21.12(Profile T; Profile S; Profile G); CGI; SDK. Supports Panasonic, Sony, Samsung, Axis, Pelco, Arecont, Canon. Chrome, IE9 and later, Firefox support.		
App Integration		iOS / Android		
Recording	Recording Resolution	Configurable from 32.0MP (6528 x 4896) to QCIF (176 x 144)		
	Network Bandwidth	AI Disabled	384Mbps (incoming/recording/outgoing)	
		AI Enabled	200Mbps (incoming/recording/outgoing)	
	Video & Audio Compression		Video: Smart H.265+ / H.265 / H.264 / H.264+ / MJPEG, Audio: G.711a / G.711u / PCM / G726	
	Playback	Channels	Up to 16 channels	
		Modes	General Recording, Motion Detection, Intelligent Events, Alarm Triggers, Point of Sale (POS events)	
Decoding Capacity	AI Disabled	8CH@8.0MP/25fps, 16CH@4.0MP/25fps	8CH@8.0MP/25fps, 32CH@1080P/25fps	
	AI Enabled	12CH@4.0MP/25fps	24CH@1080P/25fps	
Backup Method		USB device / Network / eSATA		
Interface	HDD	4 x SATA bays, up to 16TB per bay		
	Audio	1 channel input (RCA), 2 channel output (RCA)		
	Alarm	Interface	16 channels input, 6 channels output	
		Types	General (motion, video loss, scene change, etc.), Anomalies (camera disconnect, disk full, IP conflict , etc.), Intelligent (AI alerts, face, human/vehicle, etc.)	
		Actions	Begin record, take snapshot, camera external alarm output, access controller, audio, buzzer, NVR log, camera preset, email	
	Display	Input	2 x HDMI (up to 3840 x 2160), 2 x VGA (up to 1920 x 1080)	
		Split	1st & 2nd Screens: 1/4/8/9/16	1st Screen: 1/4/8/9/16/25/36, 2nd Screen: 1/4/8/9/16
	Network	Input	1 x 1000Mbps Ethernet uplink, 16 x PoE 100Mbps (802.3af/at), ports 1-8 supports ePoE	
		Functions	HTTP, TCP/IP, IPv4/IPv6, UPNP, RTSP, UDP, SMTP, NTP, DHCP, DNS, IP Filter, PPPOE, DDNS, FTP, Alarm Server, IP Search, Easy4ip	
	USB & Other Inputs		1 x Front USB 2.0, 2 x Rear USB 3.0 / 1 x RS-485, 1 x RS-232, 1 x eSATA	
NVR Operated AI		Face Detection, Face Recognition, AI Human/Vehicle Detection		
Supported Camera AI		Face Detection, Face Recognition, AI Human/Vehicle Detection, ANPR, People Counting, Heatmap, Video Metadata		
Artificial Intelligence	Face Detection	Functions	Gender, Age Group, Glasses, Expressions, Face Mask, Beard	
		By NVR	2 channels (up to 12 face images per second, per channel)	
		By Camera	16 channels	
	Face Recognition	Capacity	NVR Supports up to 20 face databases and 20,000 face images	
		By NVR	2 channels (Face detection via NVR video stream analysis; Face recognition performed by NVR)	
		By Camera	16 channels (Face detection performed via Face Capture cameras via image stream; Face recognition performed via NVR)	
	Human/Vehicle Detection	Functions	AI Tripwire & Intrusion (IVS), AI Motion Detection (SMD)	
		By NVR	IVS: 4 channels (10 rules per channel), SMD: 8 channels	
		By Camera	IVS: 16 channels, SMD: 16 channels	
	ANPR	Functions	Up to 20,000 plate numbers, blacklist & allowlist	
By Camera		8 channels		
Video Metadata	Functions	People (clothing colour, hat, bag, umbrella, etc.), Vehicle (vehicle colour, vehicle model, number plate, etc.)		
	By Camera	8 channels		
Environment	Power Supply	100-240 VAC / 50-60 Hz		
	Power Consumption	≤ 13W (without HDD) / PoE: Max 25.5W for single port, 130W total		
	Operating Environment	-10°C ~ +55°C / 10 ~ 93%RH		
	Dimensions / Rack Units	440mm × 415mm × 70mm / 1.5U		
Weight		4.82kg (without HDD)		
Additional Information	Product Diagrams			
		<p>9 10 11 12</p> <p>1 2 3 4 5 6 7 8</p> <p>1 Power Input 2 PoE Ports 3 Network Port 4 eSATA Port 5 HDMI Ports 6 USB Ports 7 VGA Ports 8 MIC IN, RCA Connector 9 Power Switch 10 Alarm In/Out 11 RS-232 Port 12 MIC OUT, RCA Connector</p>		

Your local VIP Vision™ IP solutions professional: