



Ultra HD and AI over coax.

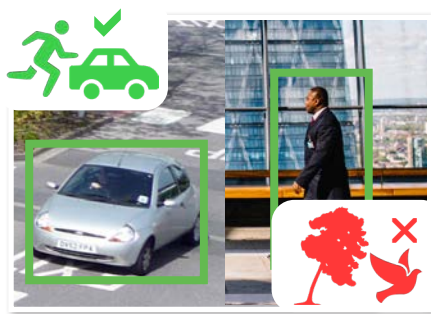
Compact Series: 8.0MP Fixed lens HDCVI surveillance kit in 8 channels

The Watchguard™ Fixed lens HDCVI surveillance kit features AI functionality over HD coax, delivering excellent 4K Ultra HD quality and advanced features. Monitor your operations with greater efficiency, security & reliability using intelligent face recognition, people/vehicle identification & more. Identify strangers, create blacklists, search footage playback and receive intelligent alerts to your devices for highly reliable security notifications.

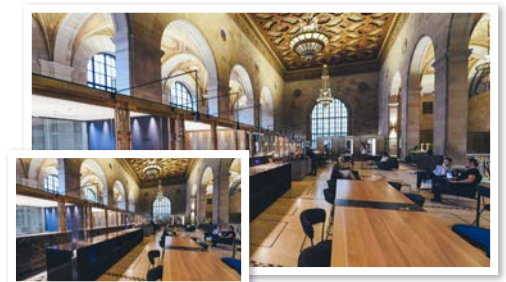
- Records up to UHD/4K 8.0MP (3840 x 2160 pixels) at 7fps
- Fixed lens cameras with wide 111° viewing angle
- 40m infrared range; IP67 weather resistance
- Pre-fitted 2TB surveillance-grade HDD
- Perimeter protection for vehicle and people detection
- Smart motion detection to prevent false alarms
- Up to 2 channels of face recognition (BNC only)
- Receive face recognition and perimeter alerts on device(s)



AI Powered Facial Recognition



Smart Person & Vehicle Detection



Ultra HD Recording Over Coax

Comprehensive, ready to install package.

The Watchguard™ Compact Series offers an 8 channel network surveillance package, purpose-built for rapid installation and impressive results.

Kit Model	CVRKIT-C882F-4
Kit Image	
Digital Video Recorder	CVR8COM2 Compact 8 Channel AI DVR with 2TB HDD pre-installed
Standard Cameras	4 x VSCVI-8BIRG 8.0MP 40m IR Fixed HDCVI Bullet

Kit Specifications

For full specifications and bracket compatibility, please see the individual web entry or datasheet.

DVR Model	CVR8COM2
Product Image	
Video Input	8 channel
Camera Configurations	Coaxial: 8 channels up to 8.0MP/7fps (HDCVI, HDTV, AHD), 960H/25fps (analogue) Network: Add 4 channels up to 8.0MP Max 48Mbps Incoming Bandwidth
Video Output	1 x HDMI, 1 x VGA
Recording Resolution	Configurable from 8.0MP (3840 x 2160) to CIF (352 x 288)
Video Compression	H.265+ / H.265 / H.264+ / H.264
Remote View	iOS (iPhone, iPad) / Android devices / Windows Phone* (limited functionality)
Internal HDD	1 x SATA port up to 10TB max, 10TB HDD Capacity
AI Functions	Face Recognition : 12 pictures pper second, 2 channel video stream only supports analog cameras Perimeter Protection : 2 channels, 10 IVS rules for each channel Smart Motion Detection (SMD+): 8 channels AI Search : Search by target classification (Human, Vehicle)

Camera Model	VSCVI-8BIRG
Product Image	
Image Sensor	Image Sensor 1/2" 8.0 Megapixel CMOS
Lens	Lens 2.8mm F1.6 Fixed Lens
Angle of View	111°
Lighting Compensation	BLC / HLC / WDR (120dB)
Video Resolution	8.0MP (3840 x 2160) to CIF (352 x 288)
Infrared Range	40m range, Auto/manual on/off control
Frame Rate	15fps (8.0MP) / 20fps (6.0MP) / 25fps (4.0MP and lower)
Housing	Aluminum, IP67 weather-rated
Power Supply	12VDC
Suggested Products	Junction Box (VSBKTA121), Corner Wall Mount (VSBKTA151), Triple Clamp Pole Mount (VSBKTA150), Dual Clamp Pole Mount (VSBKTA152E)

Your local Watchguard™ IP surveillance professional: