

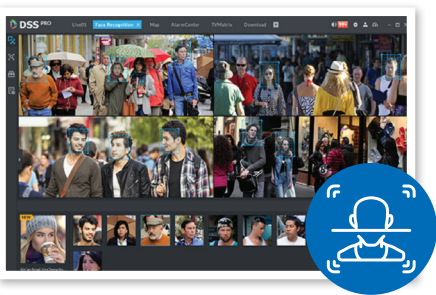


# AI functions over HD Coax.

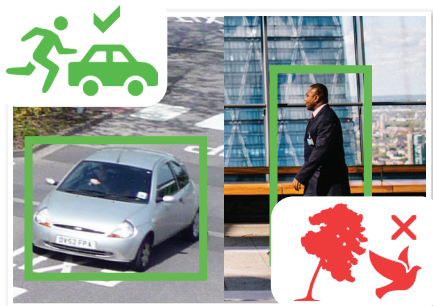
## Compact Series: 8.0MP HDCVI Synergy AI DVRs in 8 and 16 channels

The Watchguard Compact Series features AI functionality over HD coax, delivering excellent 4K Ultra HD quality and advanced features. Monitor your operations with greater efficiency, security & reliability using intelligent face recognition, people/vehicle identification & more. Identify strangers & VIPs, create blacklists, search footage playback and receive intelligent alerts to your devices for highly reliable security notifications.

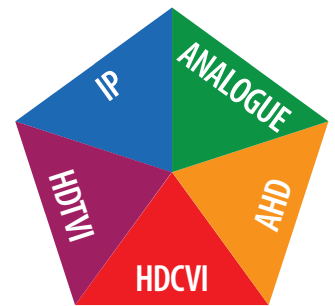
- Record UHD/4K/8.0MP (3840 x 2160) at 7fps (HDCVI, HDTVI, AHD) and 960H at 25fps (analogue)
- H.265 encoding for efficient video compression
- Add additional IP channels up to 8.0MP resolution
- 1 x SATA port for up to 10TB total HDD capacity
- Perimeter protection for vehicle and people detection
- Identify people for security & business intelligence with 2 channels of face recognition
- Receive face recognition & perimeter alerts on device(s)
- Backup via USB device or local network



AI Powered Facial Recognition



Smart Person & Vehicle Detection



IP, Analogue & HD Over Coax Support

	Model	8 Channel AI DVR	16 Channel AI DVR
	Ordering Information	<b>CVR8COM2</b>	<b>CVR16COM2</b>
General	Main Processor	Embedded Processor	
	Operating System	Embedded Linux	
	Video Input	8 channel BNC	16 channel BNC
Camera Configurations	<b>Coaxial:</b> 8 channels up to 8.0MP/7fps (HDCVI, HDTV, AHD), 960H/25fps (analogue)	<b>Coaxial:</b> 16 channels up to 8.0MP/7fps (HDCVI, HDTV, AHD), 960H/25fps (analogue)	
	<b>Network:</b> Add 8 channels up to 8.0MP Max 128Mbps Incoming Bandwidth	<b>Network:</b> Add 16 channels up to 8.0MP Max 128Mbps Incoming Bandwidth	
	Audio In/Out	1 input / 1 output (RCA), Reuse for two way talk	
Display	Video Output	1 x HDMI, 1 x VGA	
	Display Resolution	HMDI: 3840x2160x1920x1080x1280x1024x1280x720 VGA: 1920x1080x1280x1024x1280x720	
	Display Split	<b>Standard:</b> 1 / 4 / 8 / 9 <b>IP extension:</b> 1 / 4 / 8 / 9 / 16	<b>Standard:</b> 1 / 4 / 8 / 9 / 16 <b>IP extension:</b> 1 / 4 / 8 / 9 / 16 / 25 / 36
Recording	OSD	Camera title, time, video loss, camera lock, MD & recording	
	Maximum Resolution	Configurable from 8.0MP (3840 x 2160) to CIF (352 x 288)	
	Frame Rate	<b>Main:</b> 8.0MP (1~7fps), 6.0MP (1fps~10fps), 4.0MP (1~15fps), 1080p and lower (1~25fps) <b>Sub:</b> 960H (1~15fps)	
	Video Compression	AI Coding / H.265+ / H.265 / H.264+ / H.264	
	Bit Rate	32~6144 Kbps per channel	
	Record Modes	Manual / Schedule (Regular, Continuous), Motion Detection, Video Loss, Alarm, Stop	
	Record Interval	1~60 min (default: 60 min) / Pre: 1~30s / Post: 10~300s	
	Audio Compression	G.711A, G.711U, PCM (8 KHz, 16 bit Per Channel sample rate, 64 Kbps Per Channel)	
Features	Alarm Input / Output	N/A	
	Trigger Events	Recording; PTZ; tour; alarm; push video notification; email notification; FTP upload; snapshot; internal buzzer; screen tip overlay; and voice prompt	
	Video Detection	MD zones: 396 (22 x 18) / Video loss / Tampering and Diagnosis	
	Playback Sync	1 / 4 / 9	1 / 4 / 9 / 16
	Search Modes	Time/Date; Alarm; Motion detection; Exact search (to the second); Smart Search	
	Backup Modes	USB Device / Network	
AI Functions	Face Recognition	<b>Performance:</b> Max. 12 pictures per second (up to 8 target face images at the same time), 2 channel video stream only supports analog cameras <b>Stranger Mode:</b> Detect strangers face (not in database) <b>Database Management:</b> Up to 10 face databases with 20,000 face images in total	
	Perimeter Protection	<b>Performance:</b> 2 channels, 10 IVS rules for each channel <b>Object Classification:</b> Human/ vehicle secondary recognition for tripwire and intrusion	
	Smart Motion Detection	8 channels	16 channels
	AI Search	Search by target classification (Human, Vehicle)	
Network	Ethernet	1 x RJ-45 port (1000MB)	
	Network Functions	HTTP, HTTPS, TCP/IP, IPv4/IPv6, Wi-Fi, 3G/4G, SNMP, UPnP, RTSP, UDP, SMTP, NTP, DHCP, DNS, IP Filter, PPPoE, DDNS, FTP, Alarm Server, P2P, IP Search	
	Max. User Access	128 users	
	Remote View	iOS (iPhone, iPad), Android devices	
	Interoperability	ONVIF 16.12, CGI Conformant	
General	Internal HDD	1 x SATA port, up to 10TB HDD capacity	
	USB Interface	2 x USB ports (1 x USB 2.0, 1 x USB 3.0)	
	Auxiliary Inputs	1 x RS485 port (for PTZ Control)	
	Power Supply	12VDC / 2A	12VDC / 3A
	Power Consumption	<10W (without HDD)	<15W (without HDD)
	Operating Environment	-10 ~55°C / 10~90%RH	
	Dimensions	260mm x 238mm x 48mm (1U)	325mm x 257mm x 55mm (1U)
Net Weight	1.0kg (without HDD)	1.3kg (without HDD)	
Accessories	Product Diagram		

Your local Watchguard™ HDCVI solutions professional: