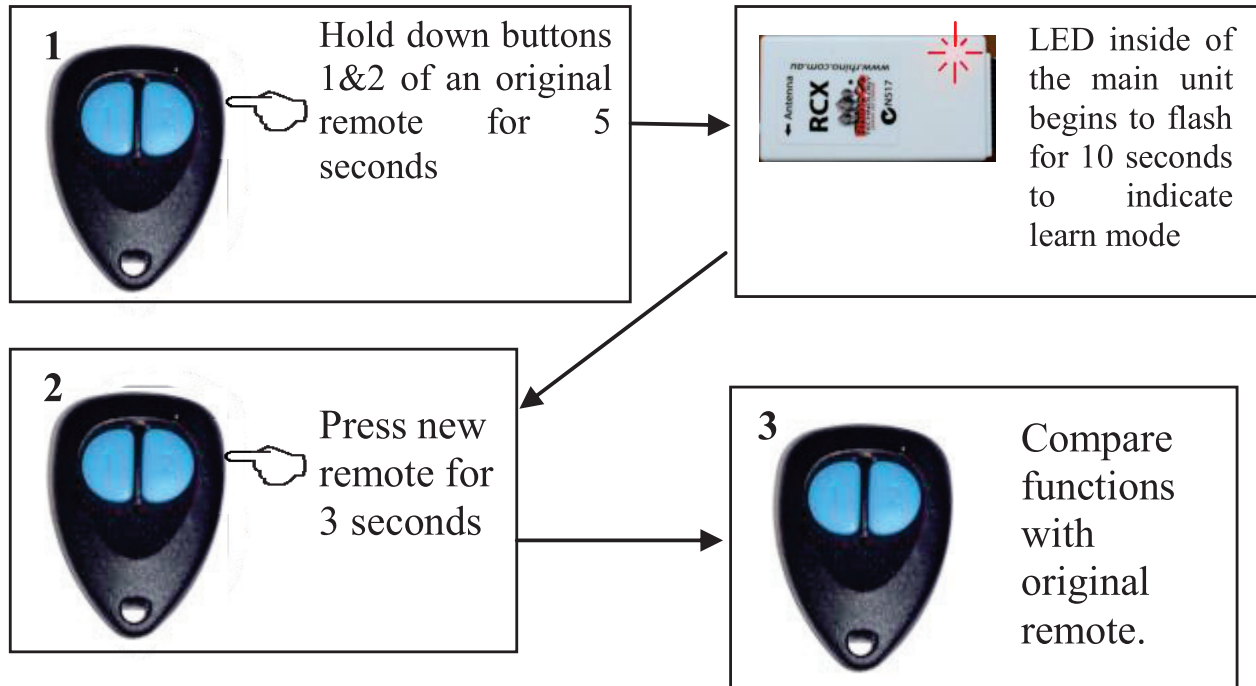


Adding remote controls

Your RCX / RCXi incorporates a unique code learning system. This enables extra remotes to be added with ease if necessary. Up to 15 remotes can be added to system if required.



To learn in a new remote control:

- 1) Press and hold buttons 1&2 of an original (learnt in) remote control together for approximately 5 seconds (LED inside the main unit will be blink during this time) or until the LED inside of the main unit begins to flash for 10 seconds to indicate learn mode.
- 2) Immediately release the buttons on the original remote then press and hold button 1 of the new remote control for approximately 3 seconds.
- 3) Your RCX should now have learnt the new remote control - test this by comparing functions with the original remote control. If the learn procedure was unsuccessful, retry the procedure from step one.