



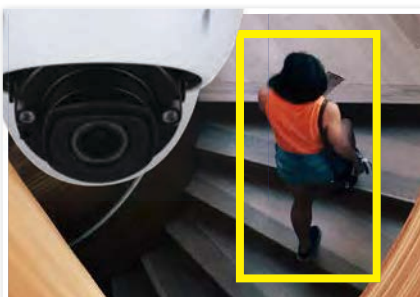
-  Face Capture
-  AI People & Vehicle Detection
-  People Counting

The best in AI surveillance.

Ultimate AI Series: Motorised AI face capture bullets in 8.0MP

The Ultimate AI Series detects and captures faces from footage using machine-learned algorithms, preparing face data for use with an AI NVR face database. This enables up to 16 channels of face recognition. The series also features intelligent perimeter protection and people counting to provide meaningful video event notifications in real-time.

- Stream up to 8.0MP (3840 x 2160) at 25fps
- Up to 60m infrared range; true day/night (auto ICR)
- Back/highlight compensation & true WDR (120dB)
- MicroSD slot for recording at the edge up to 256GB
- Internal face detection & capture to extend recognition
- Perimeter Protection to identify people & vehicles
- Intelligent AI-enhanced people counting for retail capacity management and flow control
- Extend PoE up to 800m (*requires ePoE NVR/switch*)
- Heater to prevent condensation in cold environments



People Counting & Flow Control



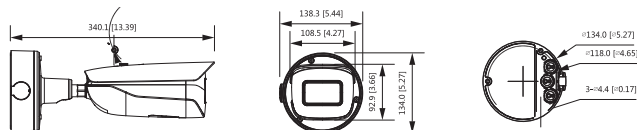
AI-Enhanced Face Detection



Extended PoE up to 800m

Specifications		8.0MP Motorised AI Bullet	
Ordering Information		VSIPU-8BIRM-I: Standard	
Camera	Image Sensor	1/1.8" 8.0MP Progressive Scan CMOS	
	Effective Pixels	3840 (H) x 2160 (V)	
	RAM / ROM	2GB / 4GB	
	Min Illumination	0.003 Lux / F1.2 (Color)	
	S/N Ratio	>50dB	
	Infrared System	4 x Infrared LED, 60m range, Auto/manual on/off control	
Lens	Lens / Iris	2.7 ~ 12.0mm F1.2 Motorised Varifocal Lens with Auto Iris	
	Field of View	Horizontal: 114°~47°, Vertical: 59°~27°	
	Focus	Auto Focus / 1.2m Min. Focus Distance	
DORI	Detect (25px/m)	87m (wide) / 187m (tele)	
	Observe (63px/m)	35m (wide) / 75m (tele)	
	Recognise (125px/m)	17m (wide) / 37m (tele)	
	Identify (250px/m)	9m (wide) / 19m (tele)	
Video	Resolution	8.0MP (3840 x 2160) to CIF (352 x 288)	
	Frame Rate	Main	8.0MP (1 ~ 25fps)
		Sub	704 x 576 (1 ~ 25fps)
		Third	1080p (1 ~ 25fps)
	Video Compression	H.265, H.264, H.264H, H.264B, MJPEG (Sub Stream)	
	Bit Rate	H.264: 32Kbps ~ 16384Kbps / H.265: 12Kbps ~ 16384Kbps	
	Bit Rate Control	Constant bit rate (CBR) / Variable bit rate (VBR)	
	Day/Night	Auto (ICR) / Color / B&W	
	Lighting Compensation	BLC / HLC / WDR (120dB)	
	White Balance	Auto / Natural / Street Lamp / Outdoor / Manual / Regional Custom	
	Gain Control	Auto / Manual	
Noise Reduction	3D DNR		
Picture Control	Mirror / Flip (0°, 90°, 180°, 270°) (8.0MP supports 90° & 270° at 1080p resolution)		
IVS	Intelligent Functions	Motion Detection (4 zones), Region of Interest (4 zones), Privacy Masking (4 zones), Smart Infrared, Abandoned Object, Moving Object	
	Perimeter Protection	Tripwire & Intrusion (Add recognition of humans & vehicles), Fast Moving Detection, Loitering Detection, Parking & Gathering Detection	
	Face Detection	Internal Face Detection & Capture to add up to 10 channels of Face Detection with AI NVR (16 total)	
	Face Attributes	Age, Gender, Expression, Glasses, Face Mask, Facial Hair	
	People Counting	Supports Line Crossing/Region/Queueing People Counting, 4 Independent Access Detection / 4 Dependent Access Detection	
	Heat Map	N/A	
	Event Trigger	N/A	
	Intelligent Search	Supports Line Crossing/Region/Queueing People Counting, 4 Independent Access Detection / 4 Dependent Access Detection	
	Network	Ethernet	RJ-45 (10/100Base-T)
		Protocol	HTTP; Https; 8021.x; TCP; ARP; RTSP; RTP; UDP; RTCP; SMTP; FTP; DHCP; DNS; DDNS; PPPoE; IPv4/v6; SNMP; QoS; UPnP; NTP; SFTP; RTMP; Genetec; Bonjour
Streaming Method		Unicast / Multicast	
Max. User Access		20 Users	
Interface	Video Interface	N/A	
	Audio Interface	1 input (RCA Port) / 1 output (RAC Port) / Audio Compression: G.711a; G.711Mu; AAC; G.726; G.723	
	Alarm Interface	3 channel in: 5mA 5VDC / 2 channel out: 1000mA 30VDC / 500mA 50VDC	
	RS485	1 (Bit rate: 1200bps ~ 115200bps)	
	Edge Storage	MicroSD Card (up to 256GB) / NAS / FTP / SFTP	
	Interoperability	ONVIF / P2P / CGI / Milestone / Genetec	
Environmental	Power Supply	12VDC / 24VAC / PoE (802.3af) (Class 4)	
	Power Consumption	<17.3W (Heater on)	
	Operating Conditions	-40°C ~ +60°C, ≤95% RH (Heater on)	
	Ingress Protection	IP67	
	Vandal Resistance	IK10	
	Housing	Metal, Plastic	
	Pan/Tilt/Rotation	Pan: 0° ~ 360°, Tilt: 0° ~ 90°, Rotation: 0° ~ 360°	
	Dimensions	340mm x 109mm x 93mm	
Net Weight	1.60kg		

Application



Your local VIP Vision™ IP solutions professional: