



Total coverage, every angle.

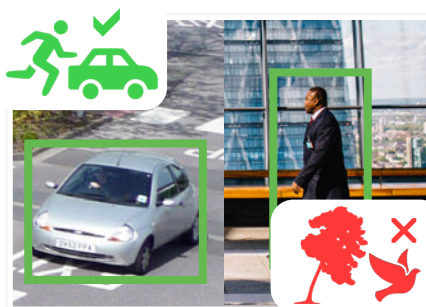
PTZ AI Series: PTZ positioning camera with AI powered video analytics

Built for complete open-area coverage, the vandal-resistant AI PTZ combines the flexibility and power of PTZ with the utility of smart AI features. The PTZ AI Series identifies people & vehicles using machine learning, to reduce false motion detection alerts and provide meaningful video event notifications in real-time.

- Stream up to 2.0MP (1920 x 1080) at 50fps
- 25x optical zoom lens (59.2° ~ 2.4° viewing angles)
- Low light colour performance at 0.005lx; 150m IR
- Auto tracking with intelligent video functions
- Intelligent AI detection to identify people & vehicles
- Smart Motion Detection (SMD+) & Perimeter Protection to prevent false alarms, using VIP Vision NVRs
- MicroSD slot for recording at the edge up to 256GB
- Supports Power over Ethernet (802.3af) or 24VAC
- IP67 weather rated & lightning proof housing



Up to 25x Lossless Optical Zoom



Smart Person & Vehicle Detection



Complete Pan-Tilt Area Coverage

Specifications		2.0MP AI PTZ Positioning Camera	
Ordering Information		VSIPPTZ-2IRW-I	
Camera	Image Sensor	1/2.8" 2.0MP Progressive Scan CMOS	
	Effective Pixels	1920 (H) x 1080 (V)	
	RAM / ROM	1GB / 4GB	
	Min Illumination	0.005 Lux/F1.6 (Color), 0.0005 Lux/ F1.6 (B/W), 0 Lux (IR on)	
	S/N Ratio	>55dB	
	Infrared System	4 x Infrared LED, 150m range, Zoom Prio / Manual / OFF on/off control	
Lens	Lens / Iris	4.8 ~ 120mm F1.6 ~ F3.5 Motorised Lens with Auto Iris	
	Field of View	Horizontal: 61~2.8°, Vertical: 33.2°~1.7° (25x Optical Zoom)	
	Focus	Auto/Semi-Auto/Manual / 0.1 ~ 1.5m Min. Focus Distance	
DORI	Detect (25px/m)	1655m	
	Observe (63px/m)	657m	
	Recognise (125px/m)	331m	
	Identify (250px/m)	166m	
PTZ	Pan / Tilt Range	Pan: 0 ~ 360° / Tilt: -90 ~ 90°	
	PTZ Speed	Preset: Pan: 160°/s; Tilt: 110°/s Manual: Pan: 0.1° ~ 120°/s; Tilt: 0.1° ~ 75°/s	
	Modes / Presets	Up to 300 presets / 8 tour	
	Start-up Action	Auto-restore to previous PTZ/lens status	
	Auto Tracking	Support	
Video	Resolution	1080p (1920 x 1080) to CIF (352 x 288)	
	Frame Rate	Main	1080p (1 ~ 50fps)
		Sub	D1/ CIF (1 ~ 50fps)
		Third	1080p / 960p / 720p / D1 / CIF (1 ~ 50fps)
	Video Compression	H.265; H.264; H.264B; H.264H; MJPEG (Sub Stream); H.265+; H.264+	
	Bit Rate	H.264 / H.265: 3 ~ 20480Kbps	
	Bit Rate Control	Constant bit rate (CBR) / Variable bit rate (VBR)	
	Day/Night	Auto (ICR) / Color / B&W	
	Lighting Compensation	BLC / HLC / WDR (120dB)	
	Smart Scene Adaptive	N/A	
	White Balance	Auto / Indoor / Outdoor / Track / Manual / Sodium Lamp / Natural Light / Street Lamp	
	Gain Control	Auto / Manual	
	Noise Reduction	2D / 3D	
Picture Control	Flip 180°		
IVS	Video Functions	Abandoned/Missing Object, Motion Detection, Region of Interest, Electronic Image Stabilisation, Privacy Masking (24 zones), Defog	
	AI Functions	Smart Motion Detection (SMD+): People and vehicle detection using motion detection Perimeter Protection: People and vehicle detection using tripwire or intrusion rules	
	Event Trigger	Motion Detection, Video Tampering, Audio Detection, Scene Changing, Network Disconnection, IP Address Conflict, Illegal Access, Storage Anomaly	
	Intelligent Search	Search people or vehicle detection events (SMD+, Perimeter Protection)	
Network	Ethernet	RJ-45 (10Base-T/100Base-TX)	
	Protocol	IPv4; IPv6; HTTP; HTTPS; 802.1x; Qos; FTP; SMTP; UPnP; SNMP; DNS; DDNS; NTP; RTSP; RTP; TCP; UDP; IGMP; ICMP; DHCP; PPPoE; ARP; SNMPv1/v2c/v3 (MIB-2); RTCP; RTMP	
	Streaming Method	Unicast / Multicast	
	Max. User Access	20 Users	
Interface	Video Interface	N/A	
	Audio Interface	1 Input, 1 Output / Supports Two-way Audio / Compression: G.711a; G.711Mu; G.726; AAC; MPEG2-Layer2; G.722.1; G.729; G.723	
	Alarm Interface	2 Inputs / 1 Output / Alarm Linkage: Capture; Preset; Tour; Pattern; SD Card Record; Trigger Digital Output; Client Electronic Map; Send Email	
	RS485	N/A	
	Edge Storage	MicroSD Card (up to 256GB) / FTP / NAS	
Environmental	Interoperability	ONVIF (Profile S/ Profile G) / CGI	
	Power Supply	12VDC 4A ± 10% / PoE (802.3af)	
	Power Consumption	<14W / <23W (IR on, PTZ operations)	
	Operating Conditions	-40° ~ +70° C / ≤95% RH	
	Ingress Protection	IP67	
	Surge Protection	TVS 8000V Lightning Proof / Surge Protection / Voltage Transient Protection	
	Housing	Metal	
	Pan/Tilt/Rotation	N/A	
Dimensions	161mm x 135mm x 292mm		
Net Weight	3.6kg		

Application

Included Accessories	Junction Box	Wall Mount
12VDC/4A Power Adapter	VSBKTA720	VSBKTB730W

Your local VIP Vision™ IP solutions professional: