

Precise temperature capture.

Thermal body temperature scanning system for instant screening at checkpoints

Doubling as a surveillance system and thermal scanner, the Thermal Body Temperature System acts as a fast, reliable & precise screening method in high traffic areas. The thermal lens is fine-tuned for body temperature measurement, serving as an automatic alert system and activating a built-in alarm when high temperatures are detected.

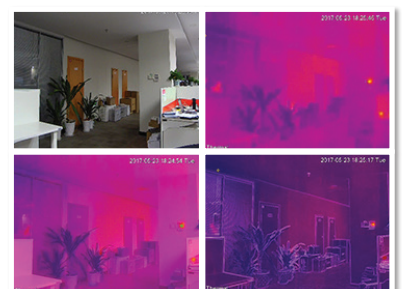
- Stream up to Full HD/1080p (1920 x 1080) at 25fps
- 2.0MP standard sensor & 6mm fixed lens (52.8°)
- One IP address/channel for thermal & visible images
- 50m infrared range, true WDR (120dB) & 2D/3D DNR
- Superb low light capability in colour as low as 0.002lx
- Uncooled VOx thermal sensor (256x192 pixels)
- 7.5mm fixed lens for thermal camera (32.4°)
- Detects 8~14µm wavelength infrared spectral range
- Audio & alarm input/output, IP67 rated body & PoE
- Includes blackbody for accurate readings ($\pm 0.3^{\circ}\text{C}$)



Precise Temperature Measurement



Built-in Alert System & Alarm Output



Adjustable Hybrid Image Modes

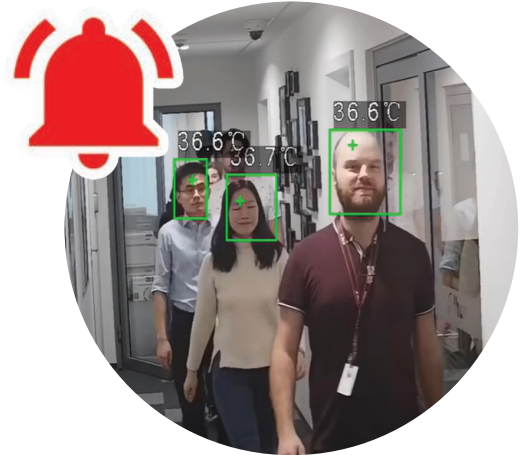
Features

Real-time alerts.

Alerts instantly activated when high temp. is detected

The can be used at key checkpoints as an automated temperature screening system, scanning entire crowds of people at once and alerting to high temperatures.

- Set temperature alerts ranging from 30°C to 45°C
- High temperature accuracy with $\pm 0.3^{\circ}\text{C}$ margin of error
- Built-in light & buzzer, with additional alarm outputs
- Temperature test covers up to 15 people simultaneously



Dual image capture.

Dual lens captures both visible & thermal images

This unique camera combines a thermal lens for heat monitoring and a visible lens with smart infrared, simultaneously capturing video and body temperature.

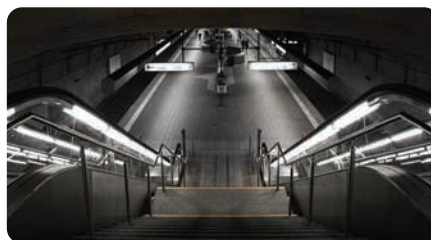
- **Visible lens:** 1920x1080 resolution (1080p), True WDR, Smart IR up to 50m, fixed 6mm lens (52.8°)
- **Thermal lens:** 256x192 pixels, 8~14um spectral range, high thermal sensitivity, 18 colour palettes

Applications

The system can be used for body temperature screening in a variety of public & private settings (*indoor use only*).



Airports



Train Stations



Schools & Universities



Hospitals & Medical Facilities



Government Buildings



Kitchens & Food Preparation

System Map

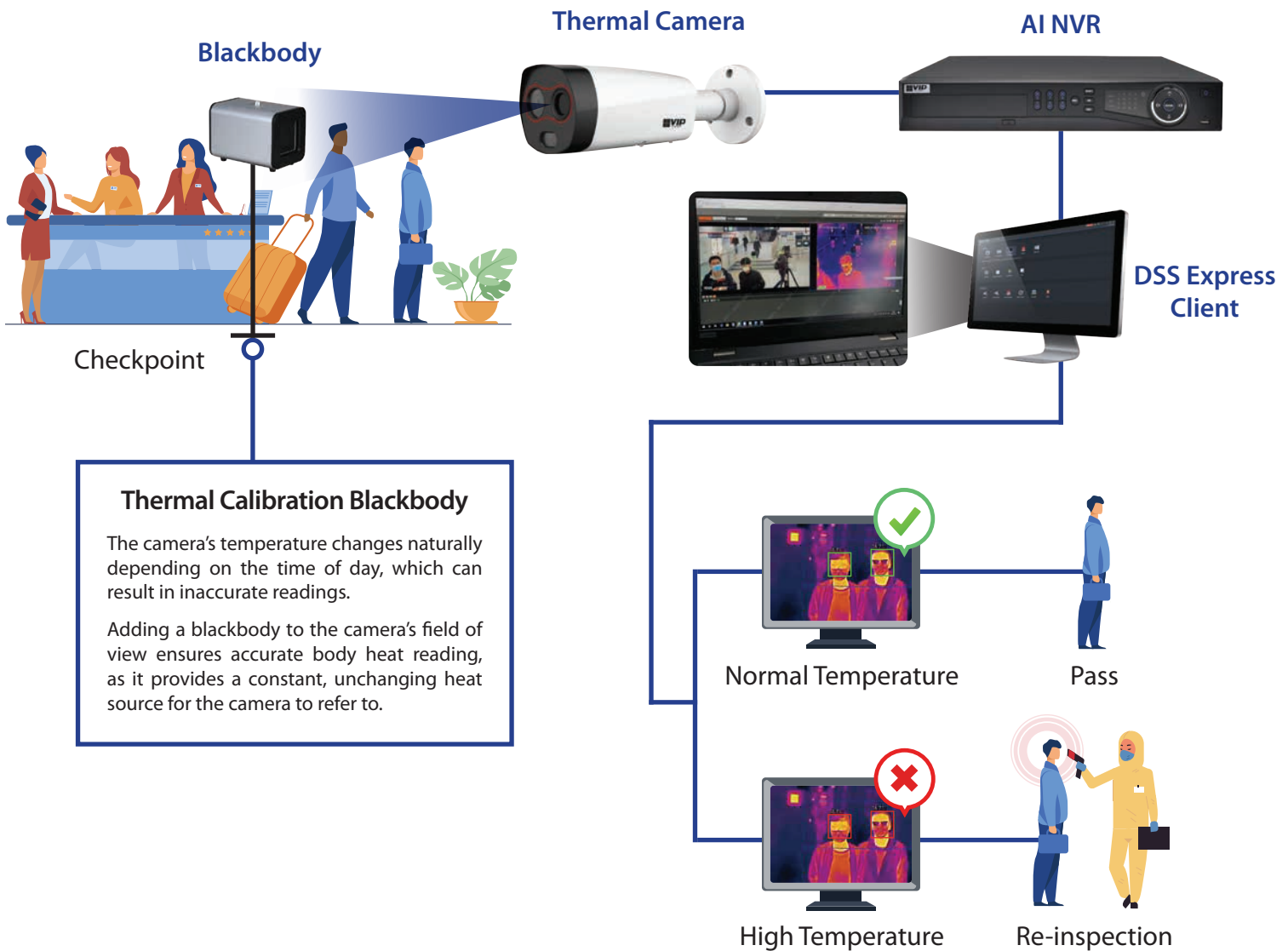
Below is an example system setup, using the thermal camera in a health inspection checkpoint. This system saves time and resources at checkpoints, preventing the need to manually inspect every person passing through.

The thermal camera at the checkpoint scans the temperature of every person passing through (with the blackbody unit set up to improve accuracy), and sends the data to the AI NVR. Visible & thermal video can be simultaneously viewed by a guard through the DSS Express client.


If someone with a high temperature is detected, an alert is sent to the DSS Express Client. That person can be manually re-inspected to confirm.



Example installation inside a train station



Camera Specifications

Specifications		2.0MP Thermal Body Temperature Bullet	
Camera	Camera Body		
	Image Sensor	1/2.8" 2.0MP Progressive Scan CMOS	
	Effective Pixels	1920 (H) x 1080 (V)	
	Electronic Shutter Speed	1/30000s~1s	
	Min Illumination	0.01 Lux/F1.8 (Color), 0 Lux/F1.8 (IR on)	
	S/N Ratio	> 55dB	
	Infrared System	1 x Infrared LED, 50m range, Auto/manual on/off control	
Lens	Lens / Iris	6.0mm F2.0 Fixed Lens	
	Field of View	52.8° (H), 30.3° (V)	
	Focus	Fixed	
Thermal	Thermal Sensor	Vanadium Oxide Uncooled FPA	
	Effective Pixels	256 (H) x 192 (V)	
	Pixel Size	12µm	
	Sensitivity (NETD)	<50mK@f/1.0	
	Spectral Range	8~14µm	
	Colour Palettes	18 thermal colour palettes (eg: WhiteHot, BlackHot, Rainbow etc.)	
	Lens / Iris	7.5mm Fixed Lens	
Lens	Field of View	32.4° (H), 24.6° (V)	
	Focus	Athermalized / Best detecting distance: 3m	
	Resolution	1080p (1920 x 1080) to CIF (352 x 288)	
Video	Frame Rate	Main	Visible: 1080p to 720p (1 ~ 25fps) / Thermal: 1280 x 960 to 720p (1 ~ 25fps)
		Sub	Visible: D1 to CIF (1 ~ 25fps) / Thermal: 640 x 480 to 320 x 240 (1 ~ 25fps)
		Third	N/A
	Video Compression	H.265 / H.264M / H.264H / H.264	
Lighting Compensation	BLC / HLC / WDR (120dB)		
White Balance	Auto / Manual / Indoor / Outdoor / Tracking / Sodium lamp / Street lamp / Natural		
Gain Control	Auto / Manual		
Noise Reduction	2D/3D DNR		
Picture Control	Mirror / Flip (180°)		
Temperature	Intelligent Functions	Region of Interest (4 zones)	
	Measurement Range	30°C ~45°C	
	Measurement Accuracy	Max ±0.3°C with Blackbody Unit, Max ±1°C without Blackbody Unit	
	Measurement Mode	Spot / Line / Area	
	Measurement Rule	Spot: 12 / Line: 12 / Area: 12 / Supports 12 rules simultaneously	
Network	Ethernet	RJ-45 (10/100Base-T)	
	Protocol	HTTP; HTTPS; TCP; ARP; RTSP; RTP; UDP; RTCP; SMTP; FTP; DHCP; DNS; DDNS; PPPOE; IPv4/v6; SNMP; QoS; UPnP; NTP; Multicast; SFTP; 802.1x;	
	Streaming Method	Unicast / Multicast	
	Max. User Access	20 Users	
Interface	Video Interface	-	
	Audio Interface	1 Input / 1 Output	
	Alarm Interface	2 Input / 1 Output	
	RS485	Support	
	Edge Storage	MicroSD Card (up to 256GB)	
	Interoperability	ONVIF / CGI / SDK	
Environmental	Power Supply	12VDC / PoE (802.3af) / ePoE	
	Power Consumption	<18W	
	Operating Conditions	10° ~ 30° C / Less than 95% RH	
	Ingress Protection	IP67	
	Vandal Resistance	N/A	
	Housing	Metal	
	Dimensions	365mm x 175mm x 176mm (with bracket)	
Net Weight	<1.40kg		