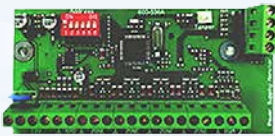




Hardwired alarm accessories.

Watchguard™ WGAP864 Expanders and Power Supply



8 Zone Smart Bus Expander
Model: WGAPASE8

8 Zone Smart Bus Expander Module
(max 6 modules per system)

Monitors the following:

- AC failure and low battery
- Auxiliary fuse failure and restore
- Tamper protection

Features:

- 2 On-board outputs
- 8 Wired EOL (End-Of-Line) Supervised Zone Inputs

Can be used without Smart Power Supply Module WGAPASPSU



Smart Power Supply
Model: WGAPASPSU

The smart power supply module is designed for installation where additional supervised power is required, for either larger installations with multiple wired detectors, or for installations where the modules are installed in areas away from the control panel.

Features:

- 1.5 Amp Power Supply
- Supervision outputs for AC fail, low battery and auxiliary failure
- Requires a minimum of 30va 16V AC transformer and a 12V 7A hr battery
- Avoids groundloop on comms bus when implementing auxilliary power on larger installs
- When used in conjunction with WGAPASE8 smart expander, provides comms-bus monitored, isolated, auxilliary power supply



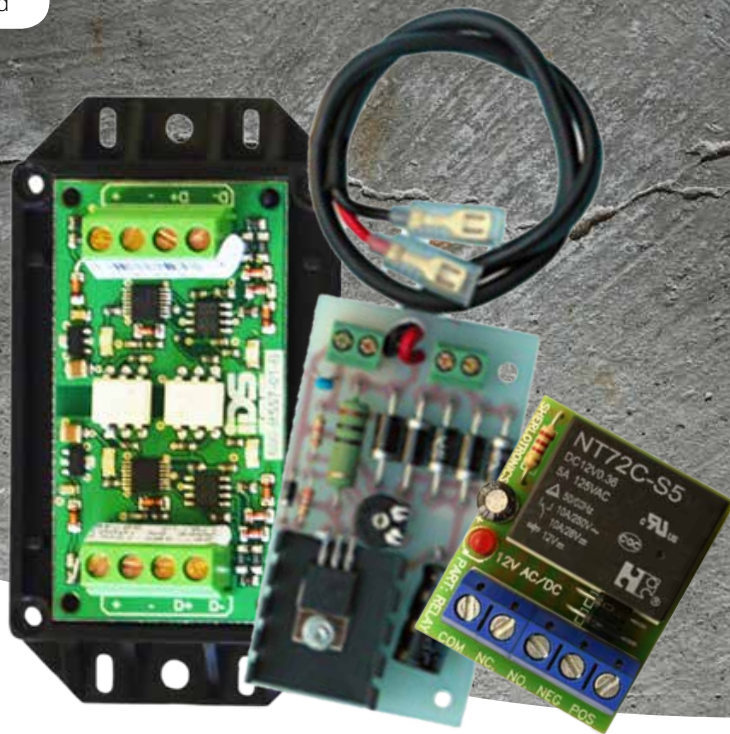
8 Channel Output Expander
Model: WGAPAOPE8

8 Channel Output Expander
(Max 2 modules per system)

- 8 Channels, dry contact 1A relays
- Wired on the key bus
- Additional outputs for power/battery/fuse failure monitoring
- Flexible output programmable options
- Programmable zone follower outputs when armed or disarmed
- Partition armed and alarm
- Programmable output time/latching

Applications include:

- Mimic panels
- Light control
- Siren/strobe control
- DVR triggers



Hardwired alarm accessories.

Watchguard™ WGAP864 Isolator, Charger and Relay



RS485 Bus Isolator
Model: WGAPABI

The RS485 Bus Isolator allows for excellent protection of main control panel from surges caused by lightning, interferences and ground loops and surges that may come from the module side of installation.

It also protects data signals from other electrical interferences.



PCB Battery Charger
Model: WGAPABC

PCB Battery charger for printed circuit board use only.

Features:

- 16VAC input
- 13.8VDC output at 1A
- 12.0VDC output for equipment



12-16V Relay Board
Model: WGAPARB

12V-16VAC/DC Relay Board with built in LED indication.

Features:

- Relay contact 220Vac
- 3A change over type
- Diode protection on board